

Accessibility Guide for Beecraigs Country Park

mail@beecraigs.com 01506 284516 (option 1) <https://www.westlothian.gov.uk/beecraigs>

Contact for accessibility enquiries: Reception



Welcome

Beecraigs Country Park is a great place to visit. It caters for a wide range of leisure and recreational activities within its 370 hectares (913 acres) and can be discovered nestled high in the Bathgate Hills near the historic town of Linlithgow. On site you will find:-

- Visitor Centre including café franchise
- Woodland walks
- Mountain bike trails and skills area
- Caravan & Camping Site
- Ranger Service
- Toilets
- Play area
- BBQ areas
- Secure dog area
- Target Archery
- Field Archery (concession to Beecraigs Archers)
- Sutherland Building (hireable classroom facility)

At a Glance

Level Access

- There is level access from the main entrance to:
 - Reception / Cafe
 - Visitor Centre
 - Balvornie
 - Play Area
- There is level access from the car park to:
 - Visitor Centre
 - Balvornie
 - Lochside
- We have a viewing area accessible to wheelchair users.

Hearing

- We have a hearing loop in Visitor Centre Reception and Sutherland Building.

General

- There are 3 accessible public toilets within Beecraigs – Visitor Centre, Lochside and Balvornie (latter two need Radar key to access).
- The 2 toilets at the lochside are gender neutral and are adjacent to the disabled toilet.

Getting here

The Visitor Centre
Beecraigs Country Park
Near Linlithgow EH49 6PL
West Lothian

Travel by public transport

- Beecraigs Country Park is in a rural location and is not served directly by public transport. Linlithgow is the closest town and is well served by buses and trains.
- On Foot/Cycle: Accessible from Linlithgow (2km), along a traffic-free surfaced footpath; this route is uphill all the way from Linlithgow, with some fairly steep sections.
- Bus Service: There are no direct public transport links to the Park's car parks. The nearest bus service can be found in Linlithgow.
[Traveline Scotland](#), including maps, fares, and details of how to book – 0871 200 2233.
In West Lothian a [Demand Responsive Taxibus Services](#) cover Beecraigs (Taxibus 7).
- By Train: For advice, telephone Traveline on 0871 200 2233. The nearest train station is situated in Linlithgow. For rail information, telephone the National Rail Enquiry Line on 03457 484950.
- By Car: Leave the M9 at J3 Linlithgow coming from Edinburgh and J4 coming from Stirling, following the A803 and then following the signs to the Country Park, which lies midway between Linlithgow, Livingston and Bathgate. If travelling on the M8 exit at junction 3, following signs for Bathgate / Broxburn. Once off the M8, Beecraigs Country Park is well signposted.
For full details and maps of how to reach Beecraigs Country Park please see the directions section of website www.beecraigs.com

Parking

- There are car parks with accessible parking spaces. Parking is free.
- There is a drop-off point at the main entrance. The drop-off point has a dropped kerb.

- From the car park to the entrance, there is level access. The path is sloped.
- The route is 120cm wide, or more.
- Six car parks provide good access to all the Park's facilities but we cannot guarantee that all car parks will be open at the times stated below:

Hillhouse Car Park - (largest of the car parks providing parking places for 148 cars, 8 disabled places, 5 minibus places, only 3 minutes from the Visitor Centre and 5 minutes to Balvornie.) - Summer: Daily 9am-6:30pm, Winter: Daily 9am-3.30pm

Visitor Centre Car Park - Summer: Daily 9am- 9pm, Winter: Daily 9am-7pm. When full on busy days, please use Hillhouse Car Park.

Lochside Car Park - Summer: Daily 9am-9pm, Winter: Daily 9am-7pm.

Balvornie Main Car Parks - Summer: Daily 9am-9pm, Winter: Daily 9am-7pm

Cockleroy Car Park - Summer: Daily 9am-9pm, Winter: Daily 9am-7pm

Animal Attraction Car Park (note: animal attraction now closed) - Summer: Daily 9am-9pm, Winter: Daily 9am-7pm

Information and map boards are placed at all main car parks to assist you on your arrival at the Park.

- Edinburgh Airport is approximately 13 miles and 22 mins drive. See map of Beecraigs for location of the following:

VISITOR CENTRE CAR PARK - Parking for disabled visitors is available 20 metres from the Visitor Centre. This car park is tarmac and will hold approximately 60 cars with 2 bays allocated to disabled vehicles.

HILLHOUSE CAR PARK - 171 spaces, plus 8 disabled spaces, 4 spaces for coaches and a 12 space cycle rack. This car park is located about 150m further up the hill from the Visitor Centre and gives access to the centre via a surfaced path, down a gentle slope. It is also located directly alongside the Events Field.

ANIMAL ATTRACTION CAR PARK (note: animal attraction now closed) - This is the car park is situated further down the hill approximately 250 metres away from the Visitor Centre. It has a tarmac surface and can accommodate approximately 60 cars with 2 bays allocated to disabled vehicles.

LOCHSIDE CAR PARK - There is car parking here for 65 cars. The surface is hard rolled stone. Access to the Visitor Centre from Lochside is 470 metres back up the hill. This is the closest car park to the loch.

COCKLERROY CAR PARK - 30 spaces and the surface is hard rolled stone. This car park is located on the main road between Bathgate and Linlithgow.

BALVORMIE MAIN CAR PARK (for Play Area and Mountain Bike Trails starting point) - This car park is located approximately 1km from the Visitor Centre, which can be accessed along a hard surfaced (traffic-free) forest road. Parking for disabled visitors is available 20 metres from the Children's Play Area and 130 metres from Balvornie toilets. This car park is tarmac and will hold approximately 35 cars with 2 bays allocated to disabled vehicles.

BALVORMIE BUS PARK - This car park has an additional 50 spaces for cars. The surface is hard rolled stone. It is approximately 200metres from the Play Area (or 20 metres via steps) and 170 metres from Balvornie toilets.

BALVORMIE OVERFLOW (small and opened as required) - The Car Park has an additional 20 spaces and the surface is grass.

BALVORMIE OVERFLOW (large and opened as required) - The Overflow Car Park has an additional 50 spaces and the surface is grass

If you are bringing a bus or horse box to Beecraigs, please park in the Hillhouse car park where there is parking for longer vehicles.

Map of the car park locations can be found on our website: www.beecraigs.com



Visitor Centre Car Park



Hillhouse Car Park



Cockleroy Car Park



Lochside Car Park



Balvornie Car Park



Animal Attraction Car Park (animal attraction now closed)

Arrival



Path to main entrance

- From the street to the main entrance, there is level access.
- The path is 120cm wide, or more.

- The path is sloped.

Main entrance

- The main entrance has level access.
- The door is 120cm wide.
- The main door is side hung and automatic.
- The Visitor Centre has a paved path with a slight gradient running up to the main entrance, where our receptionist is available for information and assistance.
The foyer area leads to the reception area, café and toilets. The reception area includes reception desk, retail displays and an ice cream freezer. The floor surface of the Visitor Centre is rubber throughout, and the area is well lit with both natural light and overhead lighting. A portable hearing loop is available.



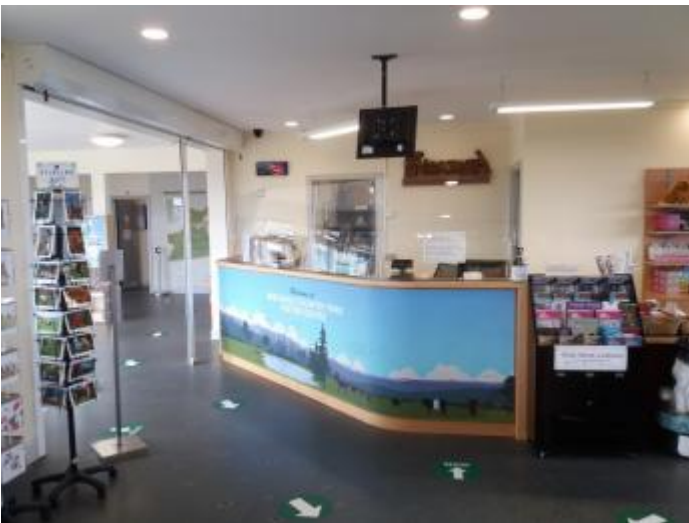
Visitor Centre entrance

Getting around inside

Ticket/ information desk

Reception

- From the main entrance to the desk, there is level access. The route is 150cm wide, or more.



Reception desk

Visitor Centre - Viewing Area

- From the main entrance to this area, there is level access. The route is 160cm wide, or more. The door is 120cm wide.

- Some display information is low, for wheelchair users. There are seats.
- Videos have subtitles.

Spectator/ Audience viewing areas

- There is a viewing area for wheelchair users.

Visitor Centre

- From the main entrance to the viewing area, there is level access. The route is 160cm wide, or more. The door is 120cm wide.
- The Visitor Centre has large windows that give great panoramic views out across West Lothian to Edinburgh, the Forth Bridges and across to Fife. There is space for wheelchair users to get uninterrupted views through these windows, but it is a public space with limited seating.



Visitor Centre & Viewing Area

Public toilet

Visitor Centre

- There is 1 public toilet for disabled visitors 142cm x 250cm with both a horizontal rail and vertical rail system next to the toilet.
From the main entrance to the public toilet, there is level access. The route is 120cm wide, or more.
The toilet door is 75cm wide.
The toilet seat is 40cm high.
Hand drier height is 95cm and nappy change unit height is 80cm.
The disabled toilet room also provides the baby changing unit for this building.
- The Visitor Centre toilets are accessed through the main entrance and are clearly marked with signage.
Transfer space in the Male Toilet is 102cm x 235cm (before entering the toilet) and the Female is 106cm x 221cm.
The sink height is 82cm, the hand drier height is 130cm and the male urinal height is 64cm.

Public toilet

Balvornie

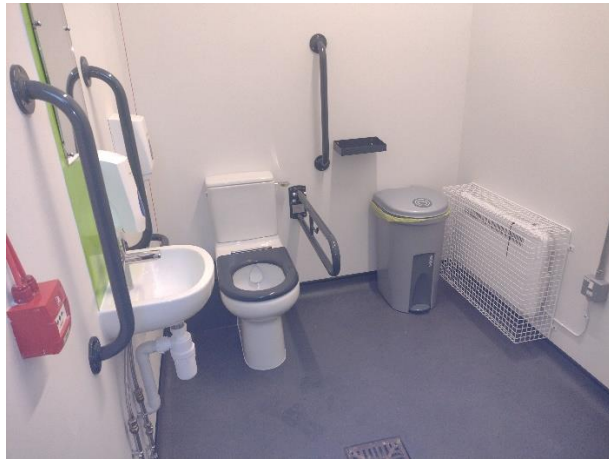
- There is 1 public toilet for disabled visitors and you need a RADAR key to open this toilet.
From the main entrance to the public toilet, there is level access. The route is 84cm wide, or more.
The toilet door is 80cm wide.
There is 90cm at the side of the toilet. There is 140cm in front of the toilet. The toilet seat is 47cm high.
The toilet has handrails.
Transfer space is 90cm x 160cm. The sink height is 83cm. There is a horizontal rail and vertical rail system next to the toilet. Hand drier height 86cm.

The colostomy bag shelf is at 95.5cm height and measures 25w x 15.5d x 4h cm.

- Additional female and male toilets are available adjacent to the accessible toilet, both have baby change facilities within.



Balvormie Public Toilets



Radar access toilet

Public toilet

Lochside – adjacent to Skills Area



- There is 1 accessible public toilet and 2 gender neutral toilets.
- All 3 have baby change facilities within and there is level access in front of each.

• Accessible toilet:-

You need a RADAR key to open the accessible toilet.

The toilet door is 95cm wide.

The toilet seat is 49cm high. The toilets have handrails.

The route is 189cm wide.

The direction of transfer onto the toilet is to the right.

There is 120cm at the side of the toilet. There is 170cm in front of the toilet.

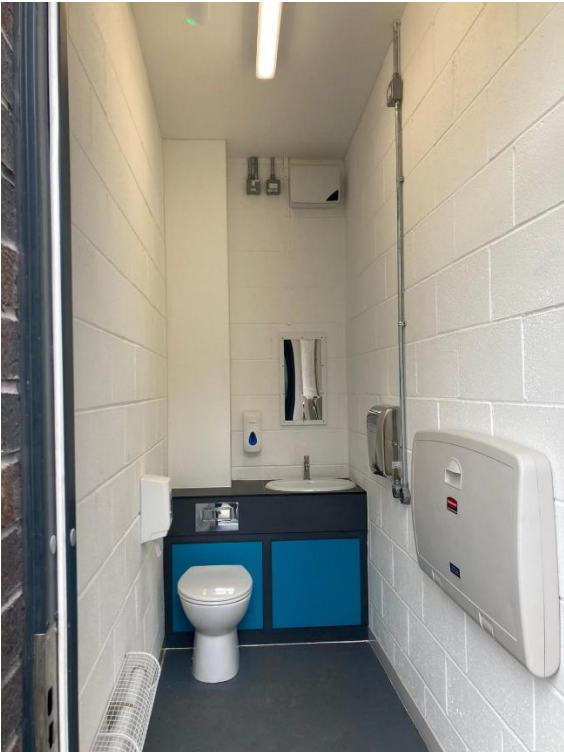
Transfer space is 120cm x 76cm. The sink height is 74cm. There is a fixed horizontal rail to the right, movable rail system to the left and a fixed grab rail to your left between mirror and toilet.

Hand drier height 101cm.

Colostomy shelf is located on the right and is 94cm high and measures 25w x 15.5d x 4h cm.



- Gender neutral toilets:-
The toilet door is 80cm wide.
The toilet seat is 44cm high.
The route is 110cm wide.
Sink height is 85cm.
Hand drier height 101cm.



Shop

Visitor Centre

- From the main entrance to the shop, there is level access. The route is 150cm wide, or more. The door is 120cm wide.
- The route through the shop is 80cm wide, or more.

Place to eat and drink

Hideaway Cafe

- From the main entrance to the dining area, there is level access. The route is 110cm wide, or more. The door is 180cm wide.
- To get to a table, there are no steps.
- The route through the dining area is 800mm wide, or more.
- There is sometimes background music.
- The Café has indoor seating (concession – contact directly for facilities and opening times). The table and plates have high colour contrast.
- The café caters for sugar free (diabetic), vegetarian, gluten free (celiac), lactose free (dairy free), nut free, low fat, low potassium, low sodium, no gastric content, vegan, kosher and halal specific diets. Hideaway Cafe uses locally sourced produce and is accredited by Coeliac UK (Grade A – May 2021). In the FreeFrom Eating Awards 2018 it won the Newbies category, Cafe and Teashops, and Focus on Gluten categories.
- The Country Park provides a range of picnic tables (wheelchair accessible) and seats outside the Visitor Centre for all visitors to use.
- Eating within the Visitor Centre is permitted only within the café.

Sutherland Way path linking Animal Attraction (now closed) car park to lochside

- From the main entrance to this area, there is level access.
- The Sutherland Walkway leads from the car park down alongside the fields on a wide path, allowing good views of the surrounding landscape. Please note there are moderate gradients on this path. The viewing platform gives good views across the Bathgate Hills, towards the Forth Bridges and the Pentland Hills. It is located alongside the car park and is accessed via two flights of steps.



Sutherland Way paths (on a slope)

Sutherland Building

- The Sutherland Building has a separate classroom / meeting room facility approximately 250metres from the Visitor Centre. It is available to hire for a reasonable fee and often used by community groups or other gatherings. It has its own car park (accessed via the Animal Attraction car park) with approximately 15 spaces and an additional 2 disabled spaces directly outside the building.

The main entrance to the Sutherland Building is on ground level.
There is also a side door measuring 900mm wide.
Inside, there is a classroom approximately 4.5metres x 8metres in size.
The area is well lit with both natural and overhead lighting system.
Folding tables and stacking chairs are available for use.
Within this building there is also an accessible toilet as well as separate male and female toilets.
The toilets are clearly marked with signage.
The entrance doors to the male and female toilets are 900mm wide.
The toilet height is 42cm.
Urinal height is 57cm.
Sink height is 77cm.
Paper hand towel dispensers are 88cm high.
The accessible toilet door is 83.5cm wide. Transfer space is 53cm x 48cm. The toilet height is 48cm. The sink height is 76cm. Paper hand towel dispenser is 81cm high.
The floor surface throughout the building is vinyl throughout.
A hearing loop is available.

Getting around outside

Designated Walking Trail

Green Route

- The trail is 6.2km long. Some of the trail has a loose surface. Unsurfaced sections can be wet and uneven. The paths are mostly in woodland, so are sometimes obstructed by fallen branches after bad weather. Gates and busy road to cross at Cockleroy and Hillhouse. The trail is sloped. The trail has seats.
- Paths are a mix of surfaced and unsurfaced paths and range from 100cm to 300cm in width. The most accessible and level part of the route goes from the Visitor Centre to Balvormie and back, in a loop. Towards Cockleroy, or in Hillhouse woodland, the Green Route paths are unsurfaced, uneven and have steeper gradients.



Green Route - unsurfaced paths at Hillhouse



Green Route - surfaced forest tracks



Green Route - boardwalk and steps

Designated Walking Trail

Orange Route

- The trail is 6.8km long. Some of the trail has a loose surface. Unsurfaced sections are uneven, with tree roots. Unavoidable flight of steps on loch dam, and on path immediately south of loch. Some stretches are little more than forest rides and are therefore very boggy. The trail is sloped. The trail has seats.
- The Orange Route is a 6km circular waymarked route beginning at the Visitor Centre. Much of the route is on good surfaced paths and forest roads, ranging from 150cm to 300cm wide, but because this is our more demanding route it uses a lot of rough and unsurfaced paths.



Orange Route - surfaced path



Orange Route - surfaced path



Orange route by loch. NB flight of steps on loch dam

Designated Walking Trail

Purple Route

- The trail is 3.8km long. Some of the trail has a loose surface. Most of the paths are unsurfaced, rough and wet. There are some boardwalks, steep ascents and descents, and some parts of the route are narrow and uneven. The trail is sloped.
- The Purple Route starts and finishes at Balvornie, and while it is the shortest of the three trails it is also the most challenging in terms of terrain, as it is unsurfaced for most of its length. Some sections are little more than cuts through wet woodland and are therefore very muddy and/or boggy underfoot.



Purple Route - paths can be muddy



Purple Route - boardwalk section



Purple Route - unsurfaced woodland paths

Picnic Area

Visitor Centre

- From the car park to the picnic area, there is level access. There is a permanent ramp. The path is 120cm wide, or more.
- The entrance is 120cm wide.
- You can bring your own food to the picnic area.



Additional seating next to Visitor Centre

Picnic Area

All recycled plastic picnic tables within Beecraigs are fully accessible for wheelchairs.

Balvormie

- From the car park to the picnic area, there is level access. You can bring your own food to the picnic area.



Balvormie picnic area

Play Area

- From the main entrance to this area, there is level access.
- The Play Area is located next to the main car park at Balvormie. Multi-user access from that car park is located in the far left corner as you enter the car park from the road.



Beecraigs Play Area

Customer care support

Accessibility equipment

- We have a hearing loop in Visitor Centre Reception and Sutherland Building.