

DATA LABEL: PUBLIC

CONSULTATION DOCUMENT

EDUCATION SERVICES PROPOSALS TO:

- **ESTABLISH A NEW NON-DENOMINATIONAL SECONDARY SCHOOL AT WINCHBURGH**
- **REVIEW ADMISSION ARRANGEMENTS IN ORDER TO ESTABLISH THE CATCHMENT AREA FOR THE NEW SCHOOL**
- **REVIEW ADMISSION ARRANGEMENTS ARISING FROM ALTERATIONS TO THE NON-DENOMINATIONAL SECONDARY SCHOOL CATCHMENT AREAS AT LINLITHGOW ACADEMY AND BROXBURN ACADEMY**
- **REVIEW TRANSITION ARRANGEMENTS FROM PRIMARY TO SECONDARY SCHOOL**

CONTENTS

SECTION 1

- 1.1 Purpose of this Document**
- 1.2 Background and Rationale**
- 1.3 Proposed New Non-Denominational Secondary School**
- 1.4 Present Catchment Area Admission Arrangements**
- 1.5 Proposed Catchment Area Admission Arrangements**
- 1.6 Population of New School**
- 1.7 Pre-Consultation Engagement**

SECTION 2

- 2.1 The Educational Benefit Statement**

SECTION 3

- 3.1 Integrated Impact Assessment**

SECTION 4

- 4.1 Consultation Process: How To Have Your Say**

Appendices

- Appendix 1 Note on Pre-Consultation
- Appendix 2 Proposed Winchburgh Non-Denominational Secondary School Catchment Area Map
- Appendix 3 Current Linlithgow Academy and Broxburn Academy Area Map
- Appendix 4 Proposed Broxburn Academy Catchment Area Map
- Appendix 5 Proposed Linlithgow Academy Catchment Area Map

SECTION ONE

This section introduces the reason for the Statutory Public Consultation

1.1 PURPOSE OF THE DOCUMENT

The purpose of this document is to advise on:

1. West Lothian Council's proposals to :
 1. Create a new non-denominational secondary school at Winchburgh;
 2. Review admission arrangements to establish a catchment area for the new school;
 3. Review admission arrangements arising from proposed alterations to the catchment areas at:
 - I. Linlithgow Academy
 - II. Broxburn Academy ; and
 4. Review transfer arrangements for primary to secondary pupils.
2. The educational benefits of these proposals and how it will make things better; and
3. Information on how you can give your views and take part in the consultation process.

West Lothian Council believes that thorough and effective consultation will support better outcomes for pupils, their families and the wider community as a whole.

Public consultations are necessary when a local authority is proposing to make a change to the school estate in this case, creation of a new secondary school with establishment of a catchment area for the new school, alteration of admission arrangements by varying school catchment areas and review of transition arrangements for primary to secondary school.

To carry out a public consultation the Council requires to follow the statutory guidance outlined in the Schools (Consultation) (Scotland) Act 2010. With this in mind this document is organised into three sections:

Section 1 of this document summarises the proposals and gives background and rationale.

Section 2 contains the educational benefits statement providing an assessment of the effects on the children/young people and their families.

Section 3 highlights the Integrated Impact Assessment (IIA) conducted by Council officers to meet statutory equality duties, assessing policies, practices and ensure compliance with legislative requirements; and

Section 4 details how West Lothian Council has organised the consultation process to meet the requirements of the legislation and how you can take part and give your views.

1.2. BACKGROUND AND RATIONALE

As part of the delivery strategy for the West Lothian Local Development Plan (LDP) and due regard to the Winchburgh Core Development Area (CDA) it is proposed to establish a new non-denominational secondary school as a key priority.

West Lothian Council has a statutory responsibility to ensure sufficient school places, to improve the quality of the school education provided, to raise standards of education and to secure best value in available resources.

To this regard, the creation of a new education establishment offers cognisance to ongoing property developments in West Lothian, alleviates possible school capacity pressures, in particular at Linlithgow Academy and enables opportunity to create flexible learning spaces in schools improving the range of learning environments across the existing non-denominational secondary school estate.

To offer indication of school roll expectations the tables below show the 2018 Based School Roll Forecasts at Linlithgow Academy and Broxburn Academy:

Linlithgow Academy:

Capacity	2018-19	2019-20	2020-21	2021-22	2022-23	2023-24	2024-25	2025-26	2026-27	2027-28	2028-29
1320	1,265	1,327	1,407	1,473	1,522	1,573	1,591	1,614	1,634	1,670	1,740

Broxburn Academy:

Capacity	2018-19	2019-20	2020-21	2021-22	2022-23	2023-24	2024-25	2025-26	2026-27	2027-28	2028-29
1210	873	913	963	991	1,036	1,076	1,089	1,090	1,066	1,038	995

1.3 PROPOSED NEW NON-DENOMINATIONAL SECONDARY SCHOOL

The proposed identified site at Winchburgh offers scope for delivery of a vibrant learning hub for the Winchburgh community. The site can be accessed via the B9080 to the west of Winchburgh village centre.

Consultees will give consideration to the name of the new school with recommendations being noted during the Statutory Consultation process.

Proposed intention initially is the delivery of a non-denominational secondary school to accommodate 660 pupils. Layout and design plans are indicative at this stage and will allow for future expansion.

The proposed new secondary school at Winchburgh would be operational in August 2022.

It is proposed the year stages of the new education establishment will be introduced on a phased basis. Section 1.6 of this report offers further information on the proposed population of the new school.

1.4 PRESENT CATCHMENT AREA ADMISSION ARRANGEMENTS

Each secondary school in West Lothian has a defined catchment area which consists of combined associated primary schools. The current associated primary schools for Linlithgow Academy and Broxburn Academy are as follows:

Linlithgow Academy:

- Winchburgh Primary School
- Bridgend Primary School
- Linlithgow Primary School
- Linlithgow Bridge Primary School
- Low Port Primary School
- Springfield Primary School
- Torphichen Primary School
- Westfield Primary School

Broxburn Academy:

- Broxburn Primary School
- Dechmont Infant School (P1-3)
- Pumpherston & Uphall Station Community
- Kirkhill Primary School
- Uphall Primary School

1.5 NEW NON-DENOMINATIONAL SECONDARY SCHOOL PROPOSED CATCHMENT AREA

The proposed primary school catchment for the new non-denominational secondary school in Winchburgh would include new and existing properties in Winchburgh and developed areas located in the existing catchments at Linlithgow Academy and Broxburn Academy.

It is proposed the undernoted schools will be the associated non-denominational primary schools for the new secondary school:

- Winchburgh Primary School, moving from Linlithgow Academy catchment area.
- Future proposal on delivery of a new non-denominational P1-P7 primary school within the Bangour Development Area – incorporating Dechmont Infant School. A separate pre-consultation exercise will be initiated to gather public perception on the proposed new Bangour Development Area primary school and associated realignment from Broxburn Academy catchment to the catchment of the proposed new secondary school at Winchburgh.

Area Maps identifying the proposed new Winchburgh secondary school catchment area and the current and proposed catchment areas at Linlithgow Academy and Broxburn Academy school are attached to this report Appendices 2-5.

1.6 POPULATION OF NEW SCHOOL

It is proposed the new non-denominational secondary school will be populated on a phased basis commencing with S1 intake in August 2022. Consecutive year stage introductions would see the school operating with all S1-S6 cohorts from August 2027.

Proposed year stage introduction:

Year Stage	Commencement
S1	August 2022
S2	August 2023
S3	August 2024
S4	August 2025
S5	August 2026
S6	August 2027

The educational benefits to be gained by introducing the year stages of a new school on phased basis are specified in Section 2.1 of this Consultation Document.

West Lothian Council recognise that populating the new secondary school on a phased basis may have implications for parents who already have children in attendance at Linlithgow Academy and Broxburn Academy and who have younger siblings yet to commence secondary school.

Pupils living in the proposed new catchment area who will have older siblings in attendance at Linlithgow Academy and Broxburn Academy will be permitted to attend the existing secondary establishment if parents wish siblings to attend the same school.

This catchment status would remain until the sibling link is broken i.e. should the

elder sibling leave secondary school education prior to commencement of the younger sibling at secondary school.

Older siblings of those pupils attending the new non-denominational secondary school at Winchburgh will be unable to transfer to the new school until their particular year group is operational.

Families moving in to the proposed catchment area with secondary aged children in a year group not yet in operation at the proposed new school will be allocated a place at the designated secondary school as it currently stands.

Placing requests to attend the new secondary school for older pupils living outwith the proposed new catchment will not be granted until such time as their year group is operational in the new school.

No existing secondary school pupils in West Lothian will be required to relocate to the proposed new secondary school in Winchburgh. Transfer of education establishment will only be considered on parental request and when the required year group is operational.

1.7 PRE-CONSULTATION ENGAGEMENT

West Lothian Council Education Executive, at its meeting on 23 April 2019, authorised the commencement of statutory consultation with initial pre-consultation on the proposed establishment of a new non-denominational secondary school and associated proposals.

A pre-consultation exercise was conducted in May 2019 the intention of which was to offer information on the indicative proposal being taken forward and to gather the views of the community in preparation of an informed proposal to take forward to public Statutory Consultation.

The initial proposal for creation of a new non-denominational secondary school at Winchburgh was well received by the community. A note on the pre-consultation exercise is attached to this report as Appendix 1.

SECTION TWO

This section contains the expected educational benefits to be gained should the proposals be progressed.

2.1. EDUCATIONAL BENEFIT STATEMENT

Whilst assessing the educational benefits of this proposal, the undernoted determinants are considered:

- **Curriculum For Excellence**

A key educational advantage of this proposal is that the new secondary school will be fully equipped to deliver the full breadth of Curriculum for Excellence.

Curriculum for Excellence is the national curriculum of experiences and outcomes for all pupils, 3-18 years.

The national guidance from Education Scotland encourages education authorities to ensure that curricular provisions offer opportunities for learners to achieve across all curricular areas and develop skills, attributes and capabilities through courses aligned with the 7 key principles of Curriculum for Excellence:

- challenge
- enjoyment
- breadth
- progression
- depth
- personalisation and choice
- coherence and relevance

Curriculum provisions at the proposed new school will be designed around the needs of the children and young people. The Broad General Education (S1-S3) will focus on core curricular areas, inter-disciplinary learning and will enable the curricular and career interests and the aspirations of the individual to be met. The Senior Phase (S4-S6) will allow opportunity for specialisation and depth; preparation for achievement at National Qualification level; development of skills for learning, life and work and supports achievement of a positive and sustained destination on departure from secondary education.

- **Phased Population of the Proposed Secondary School:**

Adopting an approach whereby the new school is populated on a phased basis has notable advantages:

- Initial smaller cohorts will allow opportunity for the children and young people to comfortably familiarise themselves with their new environment and develop relationships with peers at an early stage this in turn encouraging pupils to become successful learners, confident individuals, responsible citizens and effective contributors.
- Early opportunities for the school community to develop and embed school policies and procedures.
- Staff and pupils will have opportunity to work together and develop a positive school ethos.
- Opportunity for management and staff to plan and deliver a well-constructed timetable encapsulating the key elements of the Broad General Education that optimises the learning experience for the initial year stages.
- Engagement of creative teaching and learning approaches in a new viable and sustainable school space can help broaden scope for attainment and achievement.
- Timetable and staffing arrangements will be reviewed and adjusted year on year to acknowledge the increase in pupil numbers as new year stages are introduced and to fulfil delivery of a well-balanced curriculum.
- Extensive planning will be adopted in advance to ensure that a Senior Phase curriculum is in place for pupils as they progress through their educational pathway.

- **School Management/Staff Teams**

Teaching staff appointments at the proposed new secondary school will be undertaken in accordance to West Lothian Council's statutory recruitment processes.

Should the proposal to establish the new school be progressed, a Head Teacher will be appointed well in advance of the opening of the school with the appointed Head Teacher being involved in the subsequent recruitment process for the senior management team and teaching staff fulfilment.

In addition to teaching and support staff, there will be a requirement to create and fill all staff positions associated with the day to day operations of a secondary school. Again, this will be undertaken under the terms and conditions of West Lothian Council recruitment processes.

West Lothian Council do not anticipate changes to the existing management and staff provisions at Linlithgow Academy and Broxburn Academy and associated primary schools as a result of the proposals. Should there be an instance where staffing adjustments are required all actions will be carried out and adhere to existing West Lothian Council statutory requirements.

- **Admission**

Variations to existing admission arrangements are anticipated as a result of the proposed alteration to school catchment areas the specific details of which are highlighted in Section 1.5 of this report and shown in Appendices 2-5.

Criteria for admission will be in accordance with West Lothian Council's current admission arrangements:

[West Lothian Primary School Admission Policy](#)

[West Lothian Council Secondary School Admission Policy](#)

- **Transition**

West Lothian Council believe that effective primary to secondary transition programmes offering stability and continuity at this key stage of education is paramount.

As the development of the new school progresses engagement activities will be arranged at the earliest opportunity to ensure potential pupils of the proposed establishment play an active role and have involvement in the development of their new school.

West Lothian Council do not anticipate impact to existing transition programmes adopted by Linlithgow Academy and Broxburn Academy and the associated primary schools. All schools will endeavour as always to ensure the transition process will continue to be a positive experience for those pupils involved in P7-S1 transition.

- **School Transport**

Any requests for school transport provisions to the proposed secondary school will be considered in accordance with West Lothian Council's School Transport Policy [West Lothian Council School Transport Policy](#)

No alterations to existing entitlements and schedule of provisions are anticipated as a result of the proposed catchment developments.

- **Accommodation**

With a key focus on delivery of a viable efficient learning establishment it is paramount that West Lothian Council ensure that the proposed new school is flexible and allows the creative and multiple use of spaces by staff, pupils and the community. Layout and design plans are indicative at this stage and will be an ongoing consideration throughout the Statutory Consultation phase.

Sustainability will be a key factor in the design and construction of the proposed new school and will be incorporated into every element of the development process. Due regard will be offered to the materials used for construction, fixtures and fittings, heating systems and lighting provisions.

The new school will be designed to promote accessible, inclusive learning which meets the needs of all learners and ensure that accessibility for learners with disabilities complies with The Equality Act 2010 - Education Reasonable Adjustments.

West Lothian Council do not foresee any alterations to provisions both internally and

externally at Linlithgow Academy and Broxburn Academy and any of the associated primary schools as a result of the proposals being taken forward.

- **Outdoor Learning**

As with all existing education establishments in West Lothian, the proposed new school would benefit from best design practices that will offer opportunity for outdoor learning.

Both indoor and outdoor learning can inspire pupils and have a positive effect on attainment, achievement and aspirations.

- **Community Links**

In relation to the proposal to establish a new non-denominational secondary school in Winchburgh, West Lothian Council will work continuously with existing community groups and potential new community groups. A key focus is to ensure that strong community links are embedded at the outset of development of the new school.

The new secondary school will offer opportunity to develop strong links between the school and the Winchburgh community. Strong community links facilitates the promotion of a wide range of opportunities for users of the proposed new school and the surrounding community alike. Community interaction encourages a welcoming ethos, provides pupils with valuable life and interpersonal skills and promotes acknowledgement and respect for the local area.

The external links that Linlithgow Academy and Broxburn Academy and the associated primary schools have established will remain. All schools will continue to have clear and distinct associations within their local communities.

- **Parental Involvement**

Parent Forums will be established to ensure parents and carers of pupils attending the proposed newly established secondary school have opportunity to shape the strategic direction of the new school.

A key focus is the delivery of a welcoming school that is inclusive for all parent, carers, pupils and staff.

West Lothian Council do not foresee any impact to existing opportunities for parental involvement and engagement at Linlithgow Academy and Broxburn Academy and associated primary schools as a result of the proposals.

Parents and carers will continue to be an integral part of the school community with their ongoing contributions and working partnerships key to the success of the school.

- **Benefits for Other School Users**

The proposed new school will provide facilities which could be used to meet the learning, leisure and social needs of the community.

The sports facilities at the proposed new school will be accessible outwith core school hours and will provide excellent opportunities for children, families and other users.

It is not envisaged that any other external school users within the direct vicinity will be affected by the proposals being taken forward.

SECTION THREE

This section provides information on the Integrated Impact Assessment (IIA) conducted by Council officers to meet statutory equality duties, to assess policies and practices and ensure compliance with all legislative requirements.

INTEGRATED IMPACT ASSESSMENT

To meet statutory equality duties, the Council conducts an Integrated Impact Assessment (IIA) to critically assess policies and practices and ensure compliance with all legislative requirements.

The aim of an IIA is to examine policies and practices in a structured way taking account of equality, human rights and socioeconomic disadvantage (poverty) implications when making decisions, ensuring the impact within the community is recognised and addressed accordingly.

IIA screening is completed using the Council's Integrated Impact Assessment Toolkit and allows the Authority to recognise positive steps it can take to promote fairness and equality of opportunity for all.

As part of the consultation process the Council will consult with a wide range of stakeholders, staff, parents/carers and young people and will welcome and address comments on the IIA process.

The outcome of the Integrated Impact Assessment will inform the Final Consultation Report and the Council's consideration of the proposed changes prior to reaching a decision on whether they should be implemented.

SECTION FOUR

This section provides information on how West Lothian Council has organised the consultation process for the proposals contained within this document. It also provides information on how you can take part and give your views.

In terms of the Schools (Consultation) (Scotland) Act 2010, any proposal to create a new education establishment with an associated school catchment area, alteration of admission arrangements by varying the catchment area of a school and review of primary to secondary school transition requires a formal consultation process.

The Schools (Consultation) (Scotland) Act 2010, as amended by the Children and Young People (Scotland) Act 2014, sets out the statutory consultation requirements.

The statutory consultees are prescribed as follows:

- the Parent Council or Combined Parent Council of any affected school
- the parents of the pupils at any affected school
- the parents of any children expected by the education authority to attend any affected school within two years of the date of publication of the proposal paper
- the pupils at any affected school (in so far as the education authority considers them to be of a suitable age and maturity)
- the staff (teaching and other) at any affected school
- any trade union which appears to the education authority to be representative of the persons mentioned in bullet point above
- the community council (if any)
- the community planning partnership (within the meaning of section 4(5) of the Community Empowerment (Scotland) Act 2015 for the area the local authority in which any affected school is situated.
- any other community planning partnership that the education authority considers relevant
- any other education authority that the education authority considers relevant
- any other users of any affected school that the education authority considers relevant
- in relation to any relevant proposal which affects a denominational school, the Church, Denominational Body or Scottish Hierarchy of the Roman Catholic Church.

As stated in the terms of the Schools (Consultation) (Scotland) Act 2010 statutory consultation periods should last a minimum of six weeks continuous and incorporate a minimum of 30 school days (excluding school holidays). Therefore the consultation period for this particular proposal will run from 26 September 2019 until 15 November 2019.

The consultation paper will be made available for reference electronically and in paper

format.

A public meeting will be held in respect of the proposals at the venue listed below:

Winchburgh Primary School	Wednesday 9 October 2019 6.30-8.00pm
----------------------------------	---

This meeting will give interested parties a formal opportunity to express their views.

Representatives of the Council will be present at the meeting to outline the proposals, facilitate discussions and answer questions.

The Council website contains information on the consultation. The web address is:

www.westlothian.gov.uk/Winchburgh-NonDenominational-Secondary-Consultation

During the consultation period any views on this proposal should be sent in writing to the address given below:

Melanie Laurie, Education Project Officer, Education Services, Civic Centre, Howden Road South, EH54 6FF

Responses can also be made by e-mail to Education.Consultation@westlothian.gov.uk

All responses to be received by no later than 5.00pm Friday 15 November 2019.

Consultation Timeline:

Following the end of the Consultation period West Lothian Council must provide Education Scotland with a report detailing all findings pertaining to the Consultation period.

All written and oral comments received during the consultation process are recorded and represented in said report, along with the Council's response to those comments.

Education Scotland will consider the Council submission and advise their response accordingly.

West Lothian Council will ensure that considerations received from Education Scotland are included in the Final Consultation Report. This Final Report will be made available and notification will be given to those individuals or groups that have made representations during the Consultation period.

West Lothian Council will not make any decisions, or put any changes into effect until the Final Consultation Report has been concluded, published and subsequently presented to the Education Executive on 21 January 2020.

The above Consultation Timeline encompasses statutory legislative requirements detailed as per Schools (Consultation)(Scotland) Act 2010

قترح مجلس لوثيان الغربي لإنشاء مدرسة ثانوية غير طائفية (أي غير موجهة دينيا) في وينشبرغ ومراجعة المناطق التي تقع في النطاق المحيط بالمدارس في أكاديمية لينليجو وأكاديمية بروكسبورن

إذا كنت ترغب في الحصول على نسخة من هذا المستند ، فيرجى الاتصال بـ Education.Consultation@westlothian.gov.uk ، مع إعطاء اسمك وعنوانك واللغة التي ترغب في ترجمة الوثيقة اليها

Propozycja Rady Miasta West Lothian Council ustanowienia nowej bezwyznaniowej szkoły średniej w Winchburgh oraz dokonania przeglądu okolic naboru do szkół podstawowych Linlithgow Academy i Broxburn Academy

Jeżeli chcieliby Państwo otrzymać kopię tego dokumentu prosimy o kontakt z Education.Consultation@westlothian.gov.uk , podając swoje imię i nazwisko, adres zamieszkania oraz w jakim języku chcieliby Państwo otrzymać ten dokument

ونج برو ميں ايک نيا نان ڈينومينيشنل (جو کسی ايک مذہب سے منسوب نہ ہو) سکول تشکیل دینے اور سکول کيچمنٹ ايريا (يعنی مقامی بچوں کے ليئے سکول کے علاقوں) کا ازسرنو جائزہ لینے کے ليئے ويسٹ لوتھين کونسل کی تجویز

اگر آپ اس دستاویز کی ايک نقل چاہتے ہيں تو برائے کرم درج ذيل سے رابطہ کریں۔
، برائے مہربانی اپنا نام، پتہ اور اس زبان کا نام جس ميں Education.Consultation@westlothian.gov.uk آپ ترجمہ شدہ دستاویز چاہتے ہيں، مہيا کریں

西洛锡安议会政府关于在Winchburgh (文七宝) 建立新的非教派中学以及对Linlithgow Academy (林立斯沟中学) 和Broxburn Academy (布鲁克斯蚌中学) 学校覆盖区域进行审核的建议

如果您希望获得一份该文件的翻译件，请将您的名字、住址、以及您希望将本文件翻译成的语言告诉我们: Education.Consultation@westlothian.gov.uk

West Lothian評議會提議在Winchburgh建立新的非教派中學並審查Linlithgow學院和Broxburn學院的學校追趕區域

如果您需要本文檔的副本，請聯繫Education.Consultation@westlothian.gov.uk，將你的姓名，地址和提供您希望將文檔翻譯成的語言

উইঞ্চবার্গে (Winchburgh) নতুন অসাম্প্রদায়িক ভিত্তিক সেকেন্ডারী স্কুল প্রতিষ্ঠা এবং লিনলিথগো একাডেমী (Linlithgow Academy) ও ব্রোক্সবার্গ একাডেমীগুলোর (Broxburn Academy) ক্যাচমেন্ট এরিয়াগুলো (শিক্ষার্থী ভর্তির অগ্রাধিকার এলাকার সীমানা) পুনর্ববিচেনার জন্যে পশ্চিম লোথিয়ান কাউন্সিলের প্রস্তাবনা।

যদি আপনি এই দলিলের একটি কপি পতে চান, তাহলে অনুগ্রহ করে Education.Consultation@westlothian.gov.uk-তে যোগাযোগ করুন এবং আপনার নাম, ঠিকানা দিন এবং এই দলিলটিকে কোন্ ভাষায় পতে চান তা উল্লেখ করুন।

Vakarų Lodiano tarybos pasiūlymas sukūrti naują nekonfesinę vidurinę mokyklą Vinčburge ir patikrinti Linlitgou ir Broksberno akademijų rajonus

Jeigu pageidautumėte gauti šio dokumento kopiją, parašykite adresu

Education.Consultation@westlothian.gov.uk, nurodydami savo vardą, adresą ir kalbą, į kurią turėtų būti išverstas dokumentas

Vestlotianas padomes (West Lothian Council) ierosinājums izveidot jaunu, ne pie vienas konfesijas nepiederošu vidusskolu Vinčbērgā un pārskatīt skolu mikrorajonu robežas skolām Linlithgow Academy un Broxburn Academy

Ja vēlaties saņemt šī dokumenta kopiju, lūdzam sazināties ar

Education.Consultation@westlothian.gov.uk, norādot savu vārdu, adresi un valodu, kādā vēlaties saņemt dokumenta tulkojumu

Appendix 1

WEST LOTHIAN COUNCIL

PROPOSAL TO CREATE NEW NON-DENOMINATIONAL SECONDARY SCHOOL AT WINCHBURGH

PRE CONSULTATION SESSION
MONDAY 27 MAY 2019

Representation from:

James Cameron, Head of Education (Learning, Policy and Resources) West Lothian Council
Andrew Cotton, Senior Education Planning Officer West Lothian Council
Catherine Campbell, Senior Education Development Officer West Lothian Council
Melanie Laurie, Education Project Officer West Lothian Council
Winchburgh Primary School
Winchburgh Community Development Trust
Winchburgh Community

Aim of Session

- Information sharing opportunity - explanation and reasons behind proposal
- Initiate dialogue between consultees
- Opportunity to capture thoughts/ideas/questions
- Invaluable engagement and research process - information gathered being used to develop an informed and defined Consultation Paper moving forward.

Proposals

- Creation of new non-denominational secondary school in Winchburgh
- Establish non-denominational catchment area for the new school
- Review of non-denominational catchment areas at:
 - Broxburn Academy
 - Linlithgow Academy
 - West Calder High School
- Review transfer arrangements from Primary to Secondary School

Rationale for Change

- West Lothian Council commitment to provide quality and long term sustainable education provisions for all pupils
- Review of current and projected pupil roll indicators for Broxburn Academy, Linlithgow Academy and West Calder High School
- Implications arising from new housing developments
- Obligation to ensure new housing developments have specified catchment schools

Proposed site

- Identified site on B9080, west of Winchburgh village centre
- Proposed secondary school will initially be constructed to accommodate 660 pupils
- Flexible design allowing for future expansion
- Planning intention to commence on site 2020 with an intimated delivery 2022.

Pre Consultation Discussions

- Parking and Traffic Management:
 - Attendees sought information on traffic management highlighting potential logistical and health and safety implications as a result of 3 schools being accommodated on one site. Attendees highlighted specifically traffic volumes, traffic calming measures and road infrastructure as matters for Council consideration moving forward.
 - Council officers welcomed and noted the views of attendees. Officers advised that comments made in relation to proposed site entrance, volume and speed of traffic and provision of dedicated pick up/drop of zones will be offered due regard as the Consultation process progresses. Group were further advised that to date, traffic management assessments have been conducted and specific measures to mitigate potential traffic management issues have already been identified for implementation. Plans will be ongoing with specific information in relation to traffic management to be offered to consultees during the Statutory Consultation.
 - Discussions ensued as to planning intentions for delivery of safe walking routes.
 - Council officers again, thanked attendees for their comments and confirmed that planning considerations to this regard are ongoing with further information to be made available at Statutory Consultation.
 - Additional comments were made by meeting attendees in relation to potential pupil safety should permission be granted to leave the premises and access local amenities during lunch break periods. Pupil and traffic volumes, safe crossing points and impact to the local community were highlighted specifically as matters for further consideration.
 - Council officers confirmed that comments are noted and will be considered moving forward. It was further advised that decisions pertaining to pupil access during the school day will be made by the school leadership team.
 - Comments made in relation to requirement for adequate staff and visitor parking facilities were noted and will be carried forward for consideration.

- Site:
 - Council officers displayed the proposed site plan highlighting where access points are to be situated and intimating where each of the education establishments and the sports facilities will be accommodated.
 - Discussions continued as to the quality of land at the proposed development site with Council officers confirming that developers have an obligation and will ensure that all required land remediation is undertaken.
 - On discussions relating to the landfill site Council officers confirmed that the previous landfill area is not within the boundaries of the school development site.

- Sports Facilities:
 - When questioned who will be responsible for the sports facilities within the proposed new development officers advised that discussions to this regard continue and further information to be communicated when available.
 - In relation to shared sports facilities officers confirmed that both secondary schools will work collaboratively to ensure equal access and opportunity for all pupils

- Establishment of the new school:
 - Meeting attendees were advised that the school Leadership Team will be appointed well in advance of delivery of the new school.
 - When developing the ethos and values of the school pupil engagement will be encouraged at the outset offering a sense of ownership and pride and establishing relationships within the school community at an early stage.
 - Officers advised that the views of consultees regarding the name of the proposed new secondary school will be welcomed during the Statutory Consultation phase.
- Design Plans:
 - On request for design plans, meeting attendees were informed that design intentions were indicative at this stage, further public sessions separate to that of the Education Service Statutory Consultation will be held in due course to focus specifically on the design element of the proposed project.
- Denominational Education Facilities :
 - Council officers noted comments made in relation to the requirement of denominational educational facilities in West Lothian.
- Edinburgh Council:
 - A question was asked in relation to the possibility of pupils from Kirkliston Primary School (Edinburgh Council) attending the proposed new non-denominational secondary at Winchburgh. West Lothian Council officers advised that Edinburgh Council considerations relating to the delivery of the west of Edinburgh school estate are ongoing. To date, there have been no concrete discussions between both authorities on potential engagement between Kirkliston Primary School and the proposed new Winchburgh secondary school. Any further information will be offered to consultees as the Statutory Consultation progresses.
- Statutory Consultation
 - Attendees were advised that Statutory Consultation is anticipated to commence in October 2019 details of which will be communicated through the West Lothian Council website and digital media channels, through local press and via Winchburgh Primary School communication opportunities.
 - Officers advised a dedicated West Lothian Council web page detailing design and construction progressions will be launched as the Statutory Consultation commences.



Next Steps

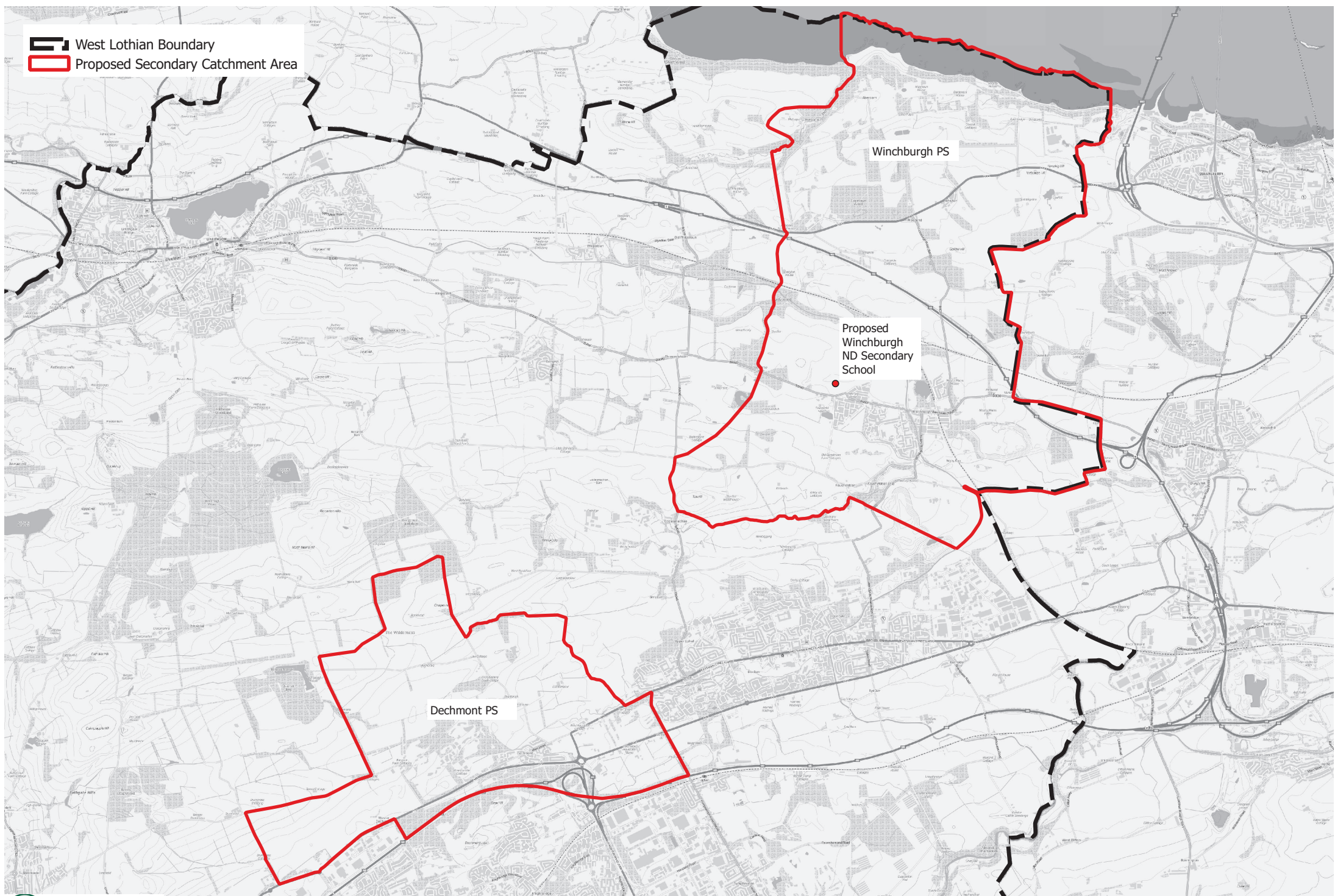
- Collate and review feedback received from pre consultation discussions
- Prepare Draft Public Consultation Paper
- September 2019 - West Lothian Council Education Executive consider note on Pre-Consultation exercise and review Draft Public Consultation Paper and make decision on continuation to Statutory Consultation phase
- October 2019 - Statutory Public Consultation period
- November 2019 - West Lothian Council submit report on findings of Public Consultation to Education Scotland for review

- December 2019 - On receipt of response from Education Scotland, West Lothian Council prepare and publish Final Consultation Document
- January 2020 - West Lothian Council Education Executive consider Final Consultation Document and agree final decision on proposal

Close

Group were thanked for their attendance and participation in discussions



 West Lothian Boundary
 Proposed Secondary Catchment Area

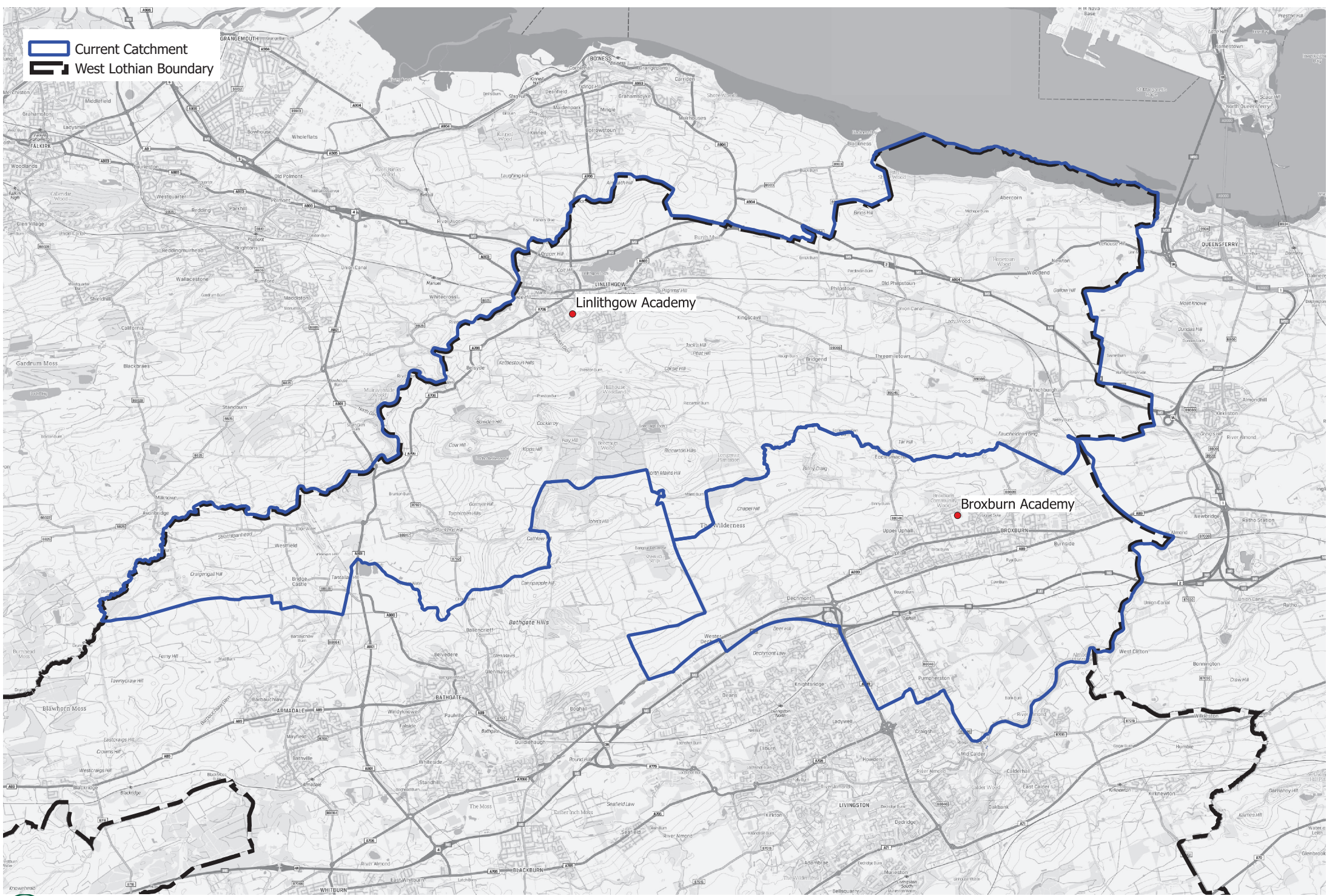


Winchburgh PS

Proposed
Winchburgh
ND Secondary
School

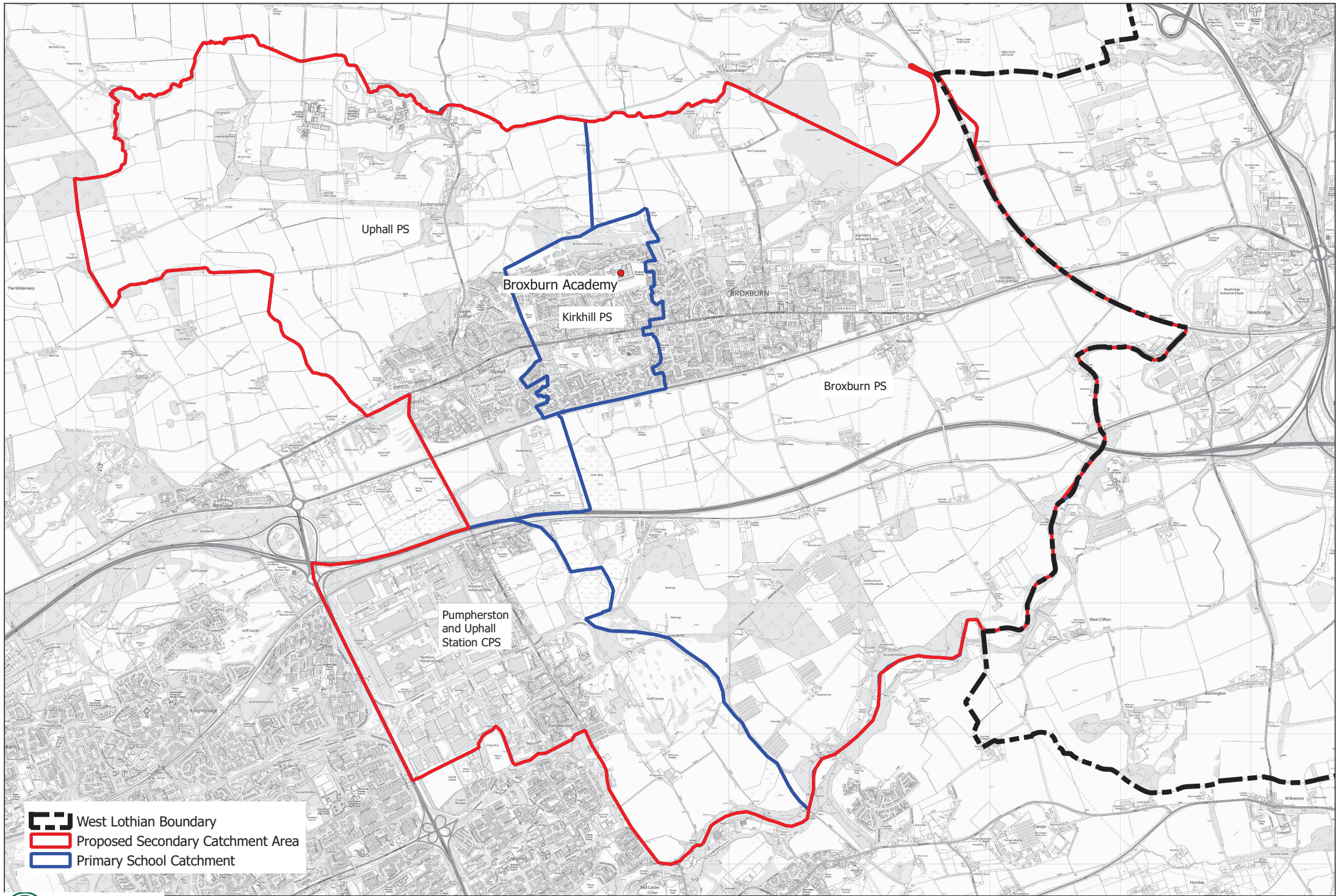
Dechmont PS




 Current Catchment
 West Lothian Boundary



Linlithgow Academy




Broxburn Academy



-  West Lothian Boundary
-  Proposed Secondary Catchment Area
-  Primary School Catchment

Proposed Broxburn Academy catchment area



-  West Lothian Boundary
-  Proposed Secondary Catchment Area
-  Proposed Primary School Catchment Area

