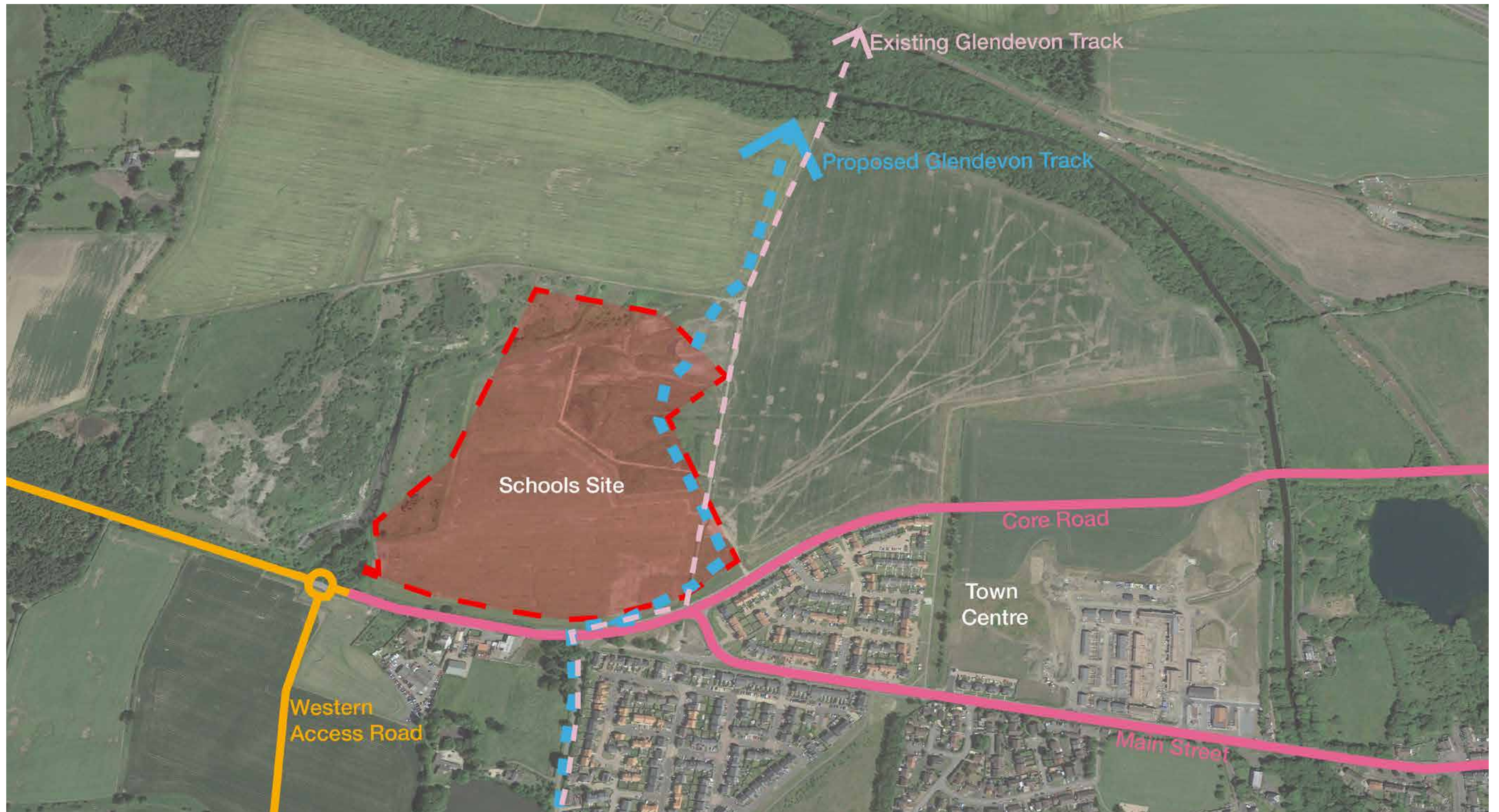


# Winchburgh Schools

## Location and Safe Routes to Schools



Location



Safe Routes to Schools

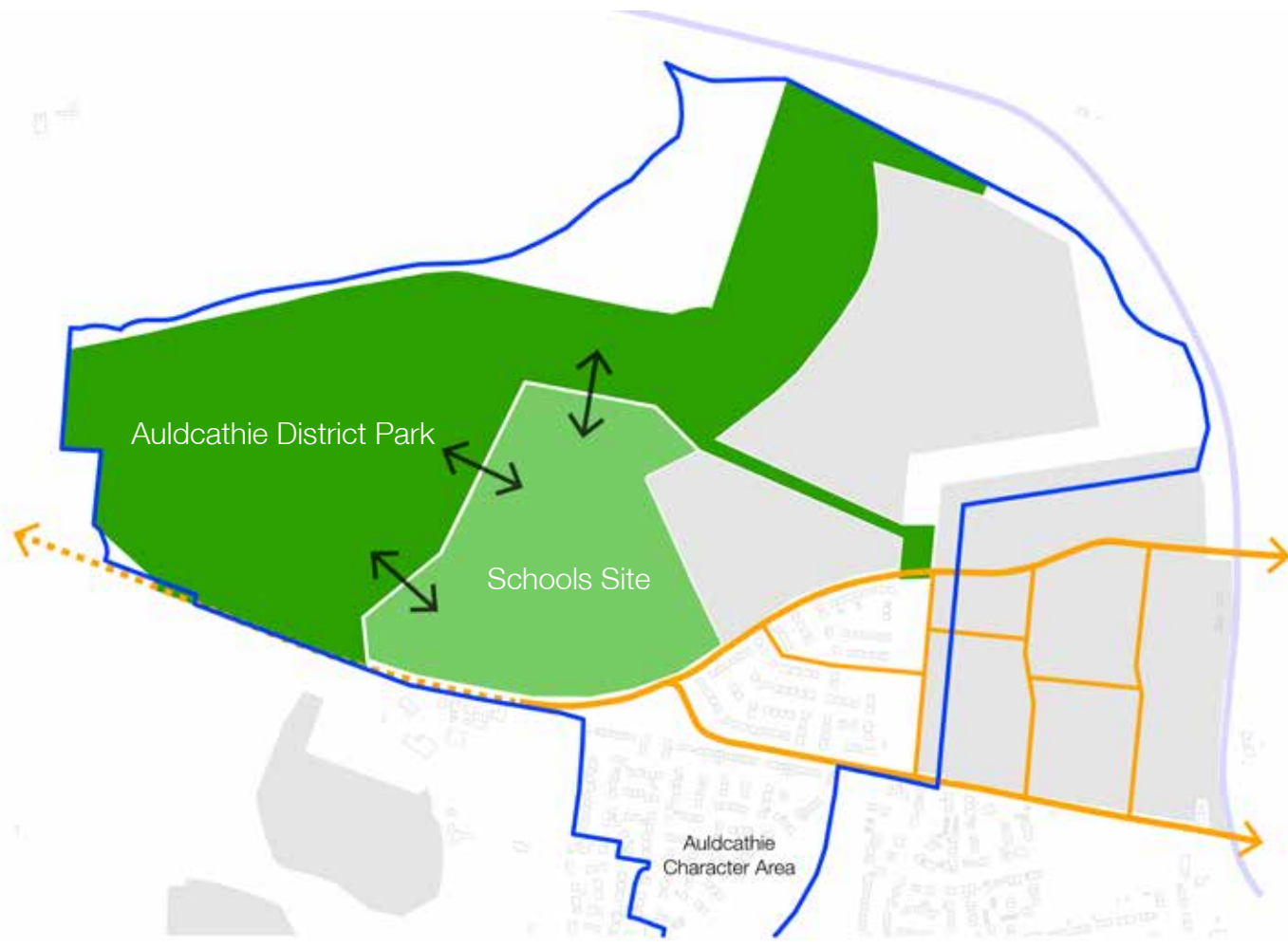
### Key

- Uncontrolled crossing - existing
- Controlled crossing - as part of planning application
- Controlled crossing - provided / agreed under previous planning applications
- Controlled crossing - future location (existing / as proposed as part of this application)
- 3m wide footway / cycleway (existing / as proposed as part of this application)
- Future 3m wide footway / cycleway (existing / as proposed as part of this application)
- Core Road and Main Street
- Existing Glendevon track
- 2m wide footway (existing / as proposed as part of this application)
- Overall planning boundary (P.P.I.P)
- Enabling works planning boundary



# Winchburgh Schools

## The Site and External Spaces



Schools in a Park



Existing Site Photographs



**Key**  
 ■ Pedestrian route  
 ■ Bus drop-off  
 ■ Vehicle access  
 ■ Service access  
 ■ Phase 2 parking



**Connection to Wider Landscape**

The buildings are located to enable the parkland landscape to continue between them. This allows the spaces around the school to be defined, reduces the effect of overshadowing from the surrounding trees, and benefits from increased sunlight.



**Key Views**

The building forms and phasing respond to existing panoramic key views and vistas that surround the site.



**Arrival**

The first phase of the buildings are positioned to connect to with adjacent primary school and create a series of drop off plaza from the point of arrival from the village.



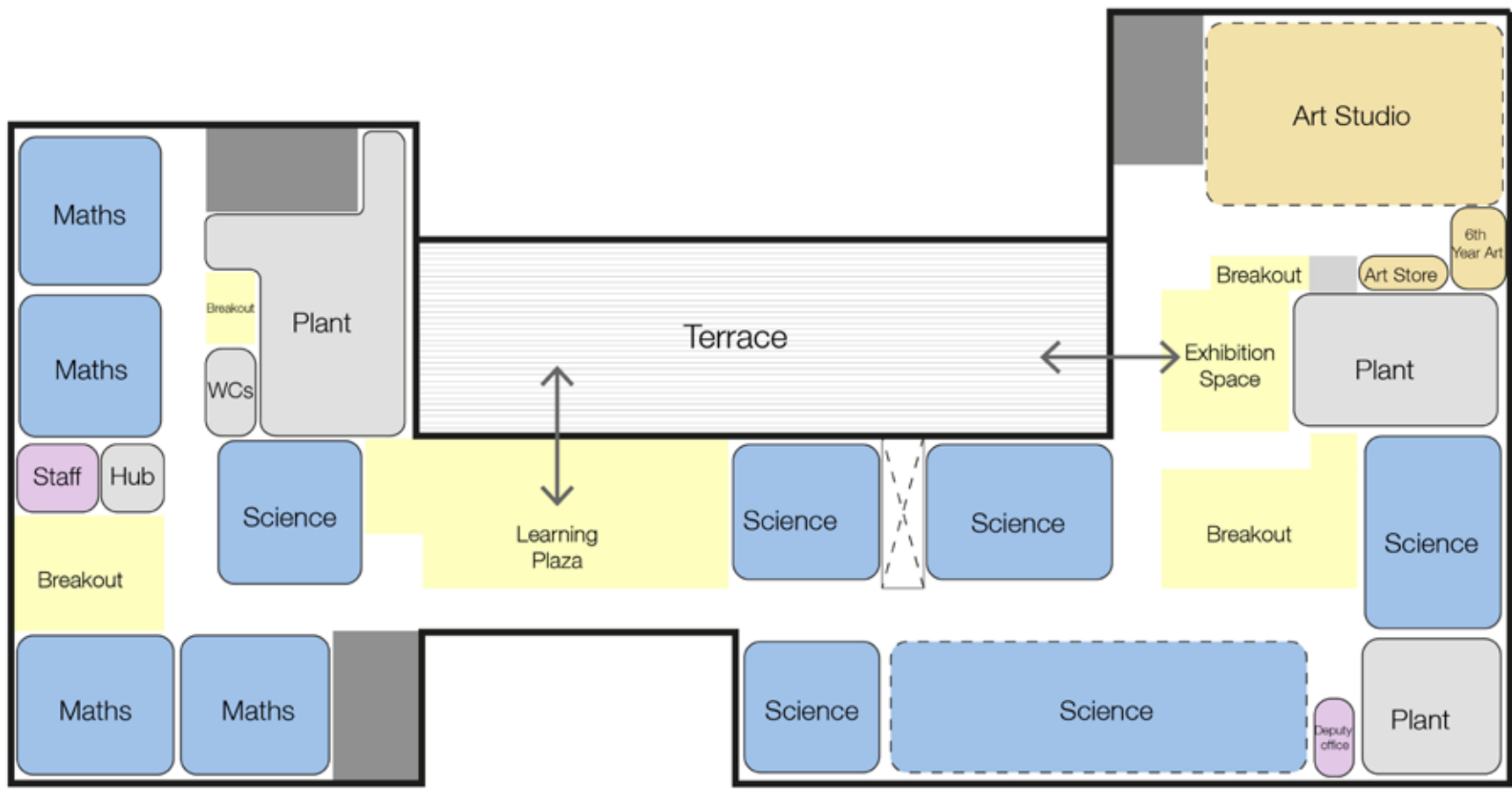
**'A collection of buildings that work together'**

The school buildings assure a key focal point at the west entrance to Winchburgh and establish key vistas through the site.

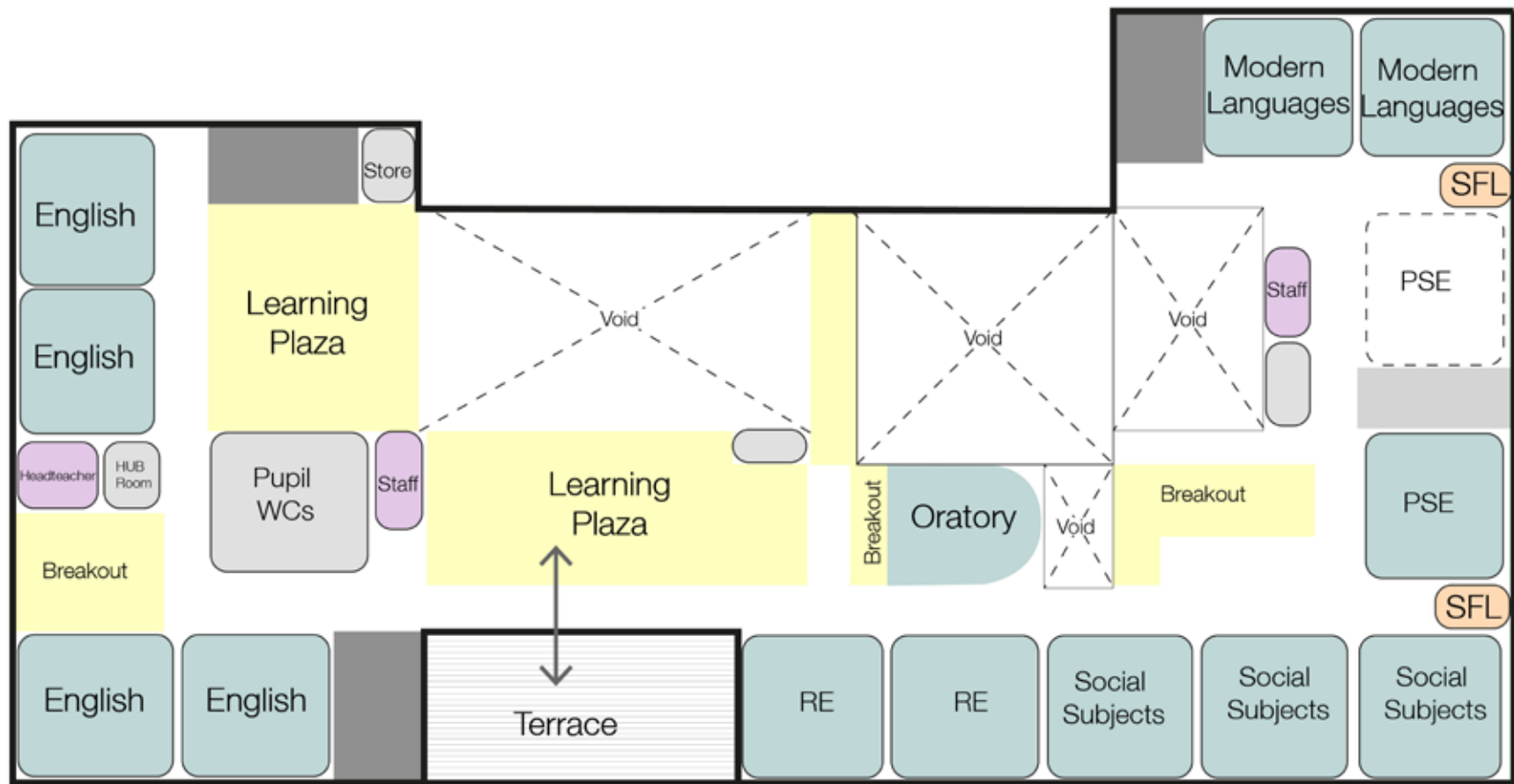
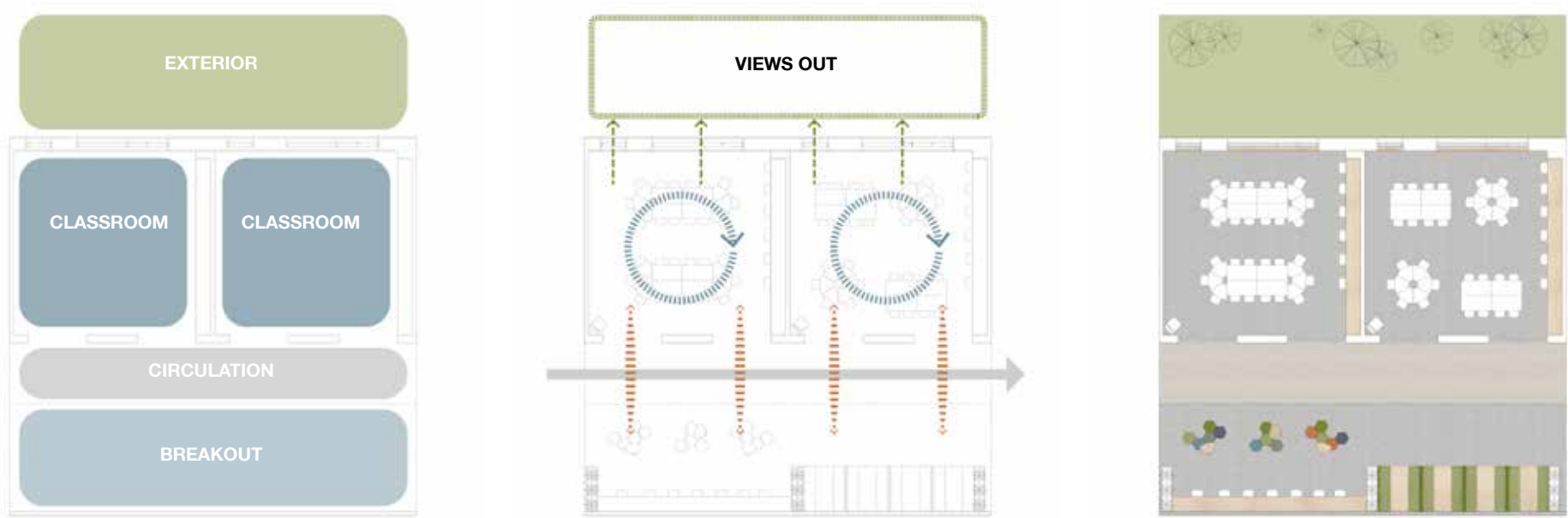


# Winchburgh Schools

## Denominational Secondary School



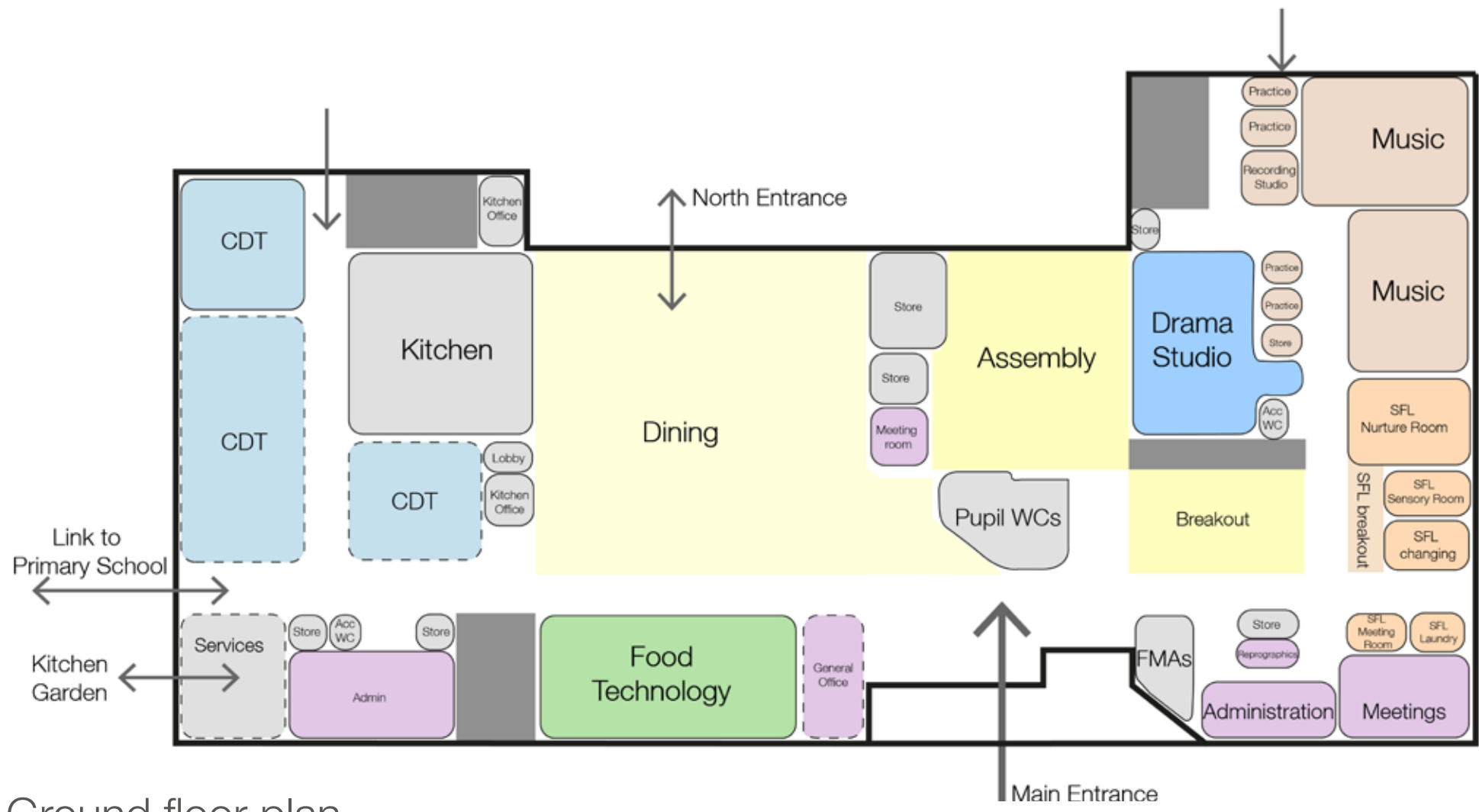
Second floor plan



First floor plan



Classroom and breakout area design



Ground floor plan



Main entrance towards dining



Learning plaza towards terrace

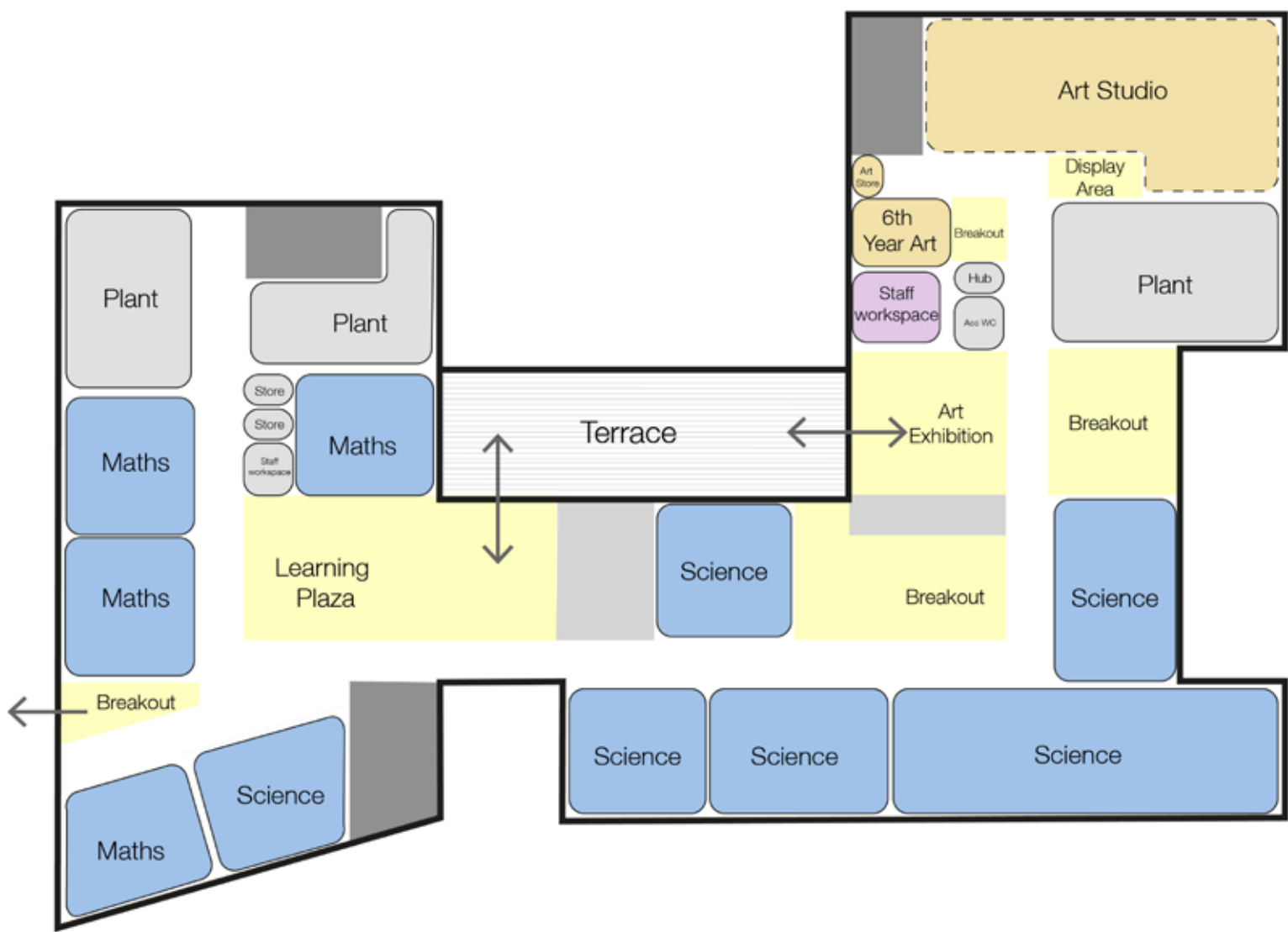


LRC towards dining

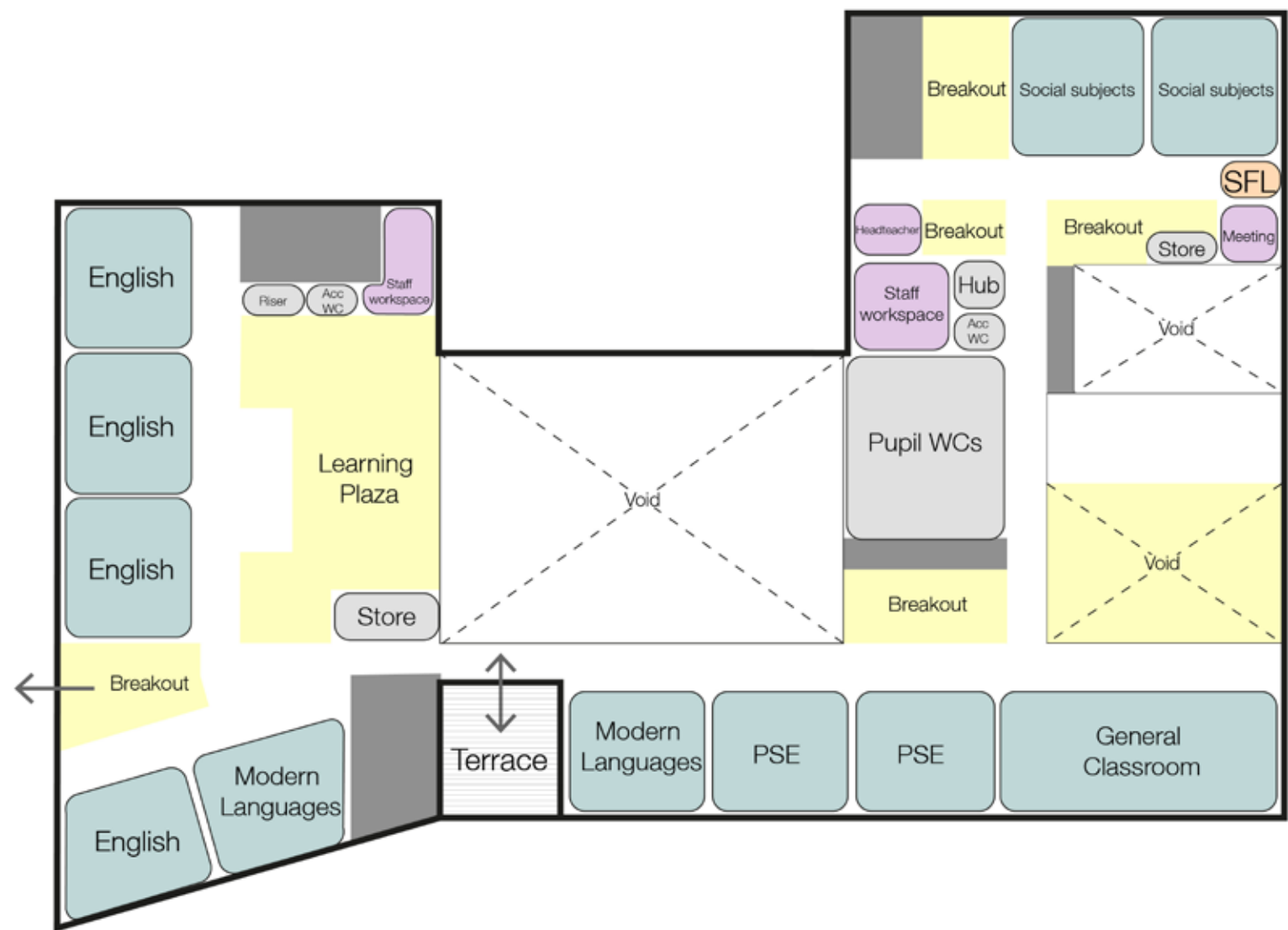


# Winchburgh Schools

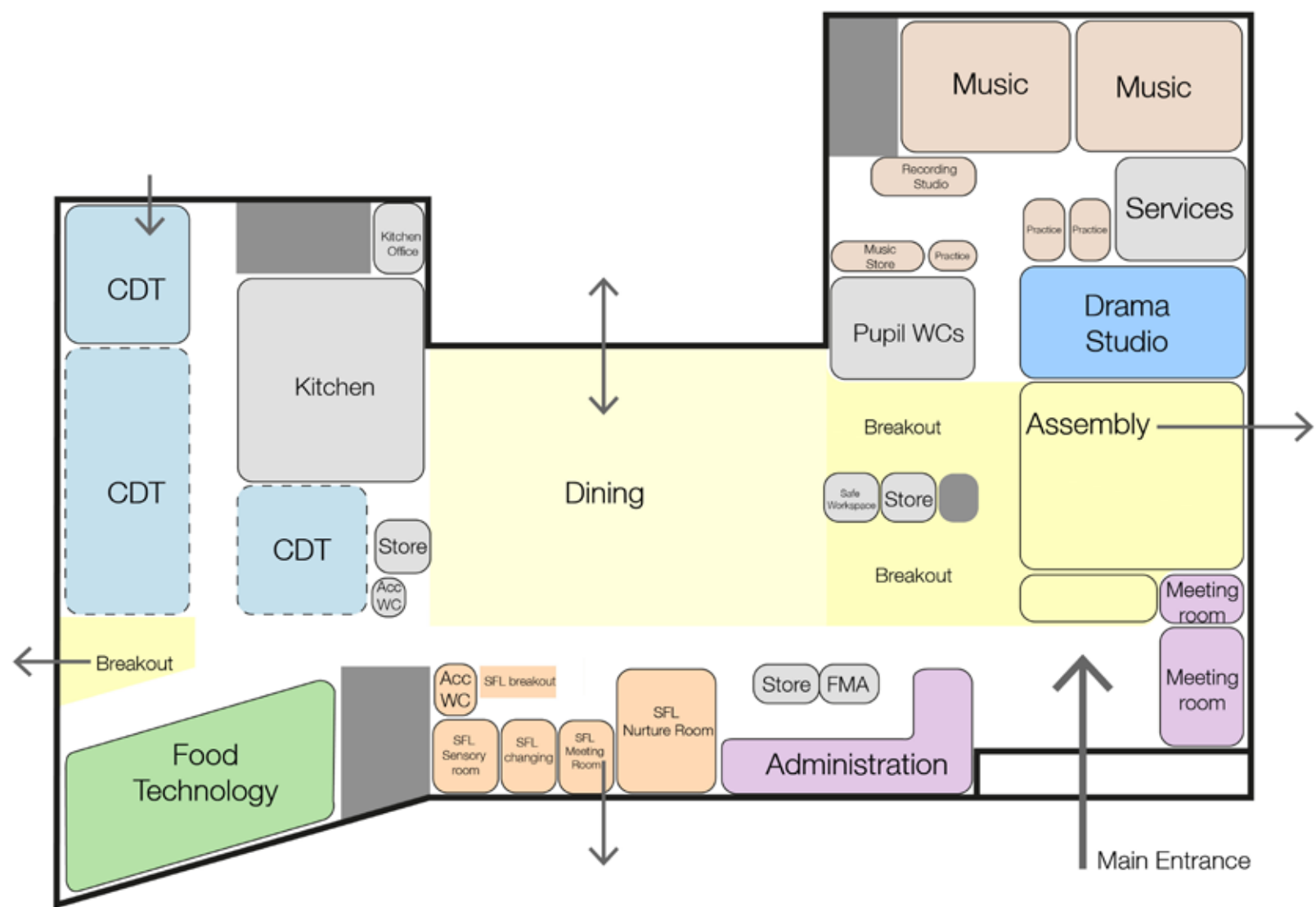
## Non-Denominational Secondary School



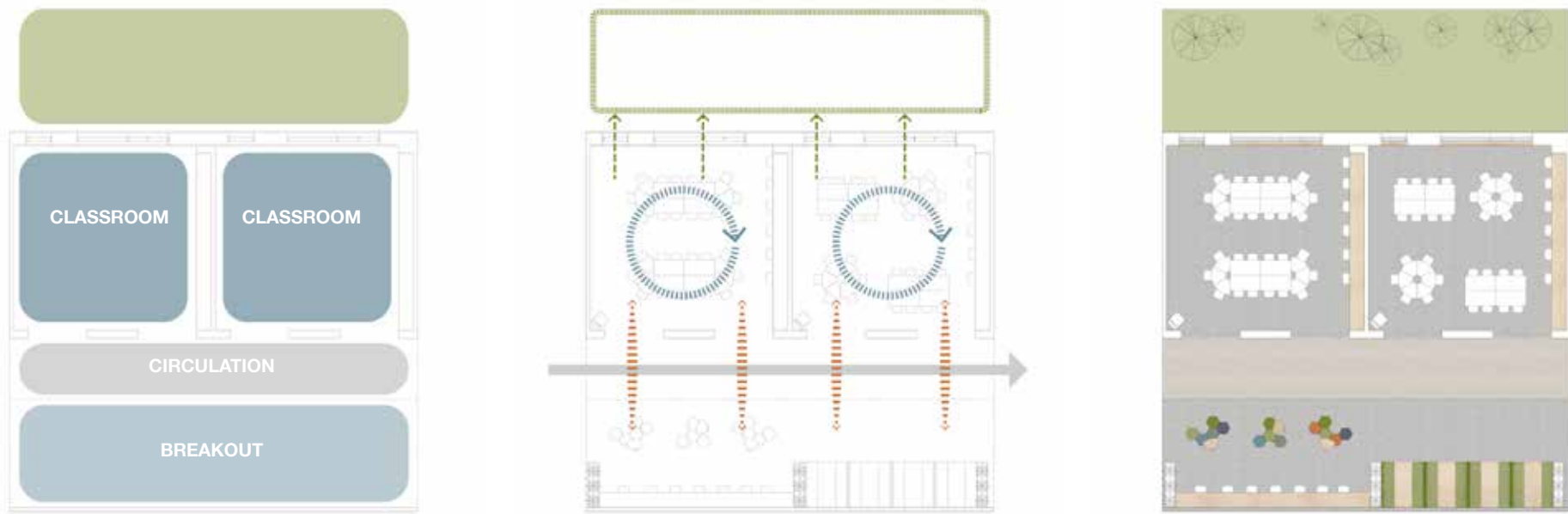
Second floor plan



First floor plan



Ground floor plan



Classroom and breakout area design



Main entrance towards dining



Science super lab

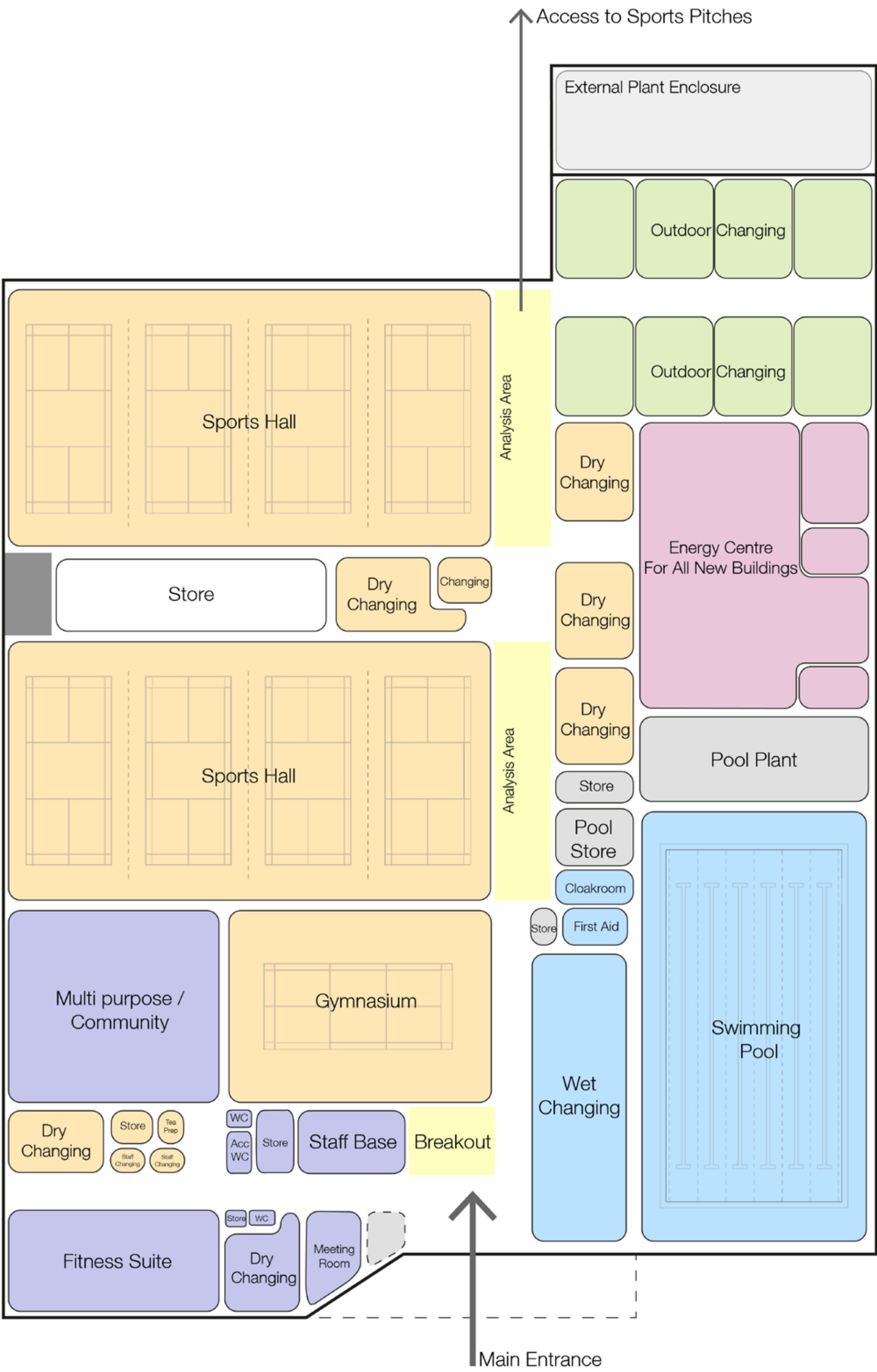


Assembly



# Winchburgh Schools

## PE and Community Building



Analysis Area



Internal precedent / examples



PE and Community Main Entrance



# Winchburgh Schools

## Non-Denominational Secondary School Elevation Study



North Elevation



East Elevation



South Elevation



West Elevation



Non-Denominational Secondary School External View



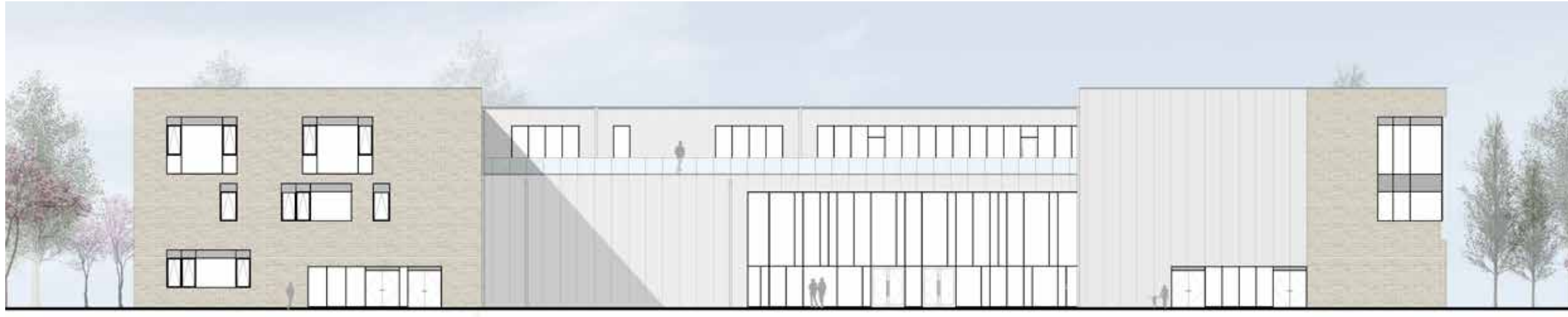
Brick precedents / examples



# Winchburgh Schools

## Denominational Secondary School

### Elevation Study



North Elevation



East Elevation



South Elevation



West Elevation



Denominational Secondary School External View



Brick precedents / examples



# Winchburgh Schools

## External Views



Phase 1 massing



Phase 2 massing



Phase 1 massing



Phase 2 massing



PE and Community Building, Denominational Secondary School and Holy Family Primary School