



Transform
Craigshill



Early intervention and prevention

Update May 2019

challenges

Early intervention and prevention

Early intervention and prevention priorities emerging from community consultation, statistics, profiling and mapping of services and organisations



Support for children with early diagnosed autism



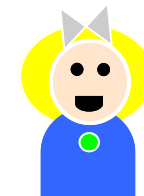
Drugs and alcohol issues with pre school families



Dads support in child development, Expectations & relationships



High levels of Smoking



High levels of prescription milk



For breastfeeding mums to feel comfortable in the café



Domestic abuse support for pre school families



No local anti-natal



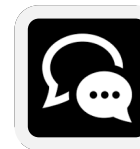
Low breastfeeding rates



Children not having routines,



Playgroup not having an outdoor space



Speech and language at 27-30 month check, literacy and numeracy at P1



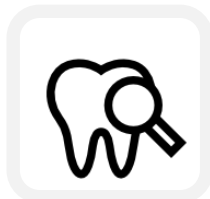
Positive life experiences of children to support learning



Having a safe place to store resources to deliver in the area



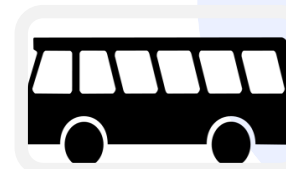
FNP linking in with community activity to promote community cohesion and develop relationships



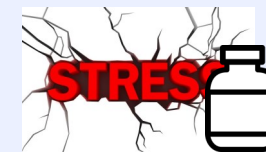
Teeth decay in pre school children



Safe walking route



Transport to support attendance at Inveralmond CHS



Mental health of young people

Transform
Craigshill



Early intervention and prevention

- Ante natal and post natal involvement
- Speech and language
- Literacy and numeracy
- Life experiences of children
- Affordable activities for children
- Affordable activities for families during holiday periods
- Access to services and education



Antenatal & postnatal involvement

Key Issues /needs identified:	
<p>Current position:</p> <p>Presently anti natal classes are provided in another area . Attendees from Craigshill are minimal and not within the worst 20% SIMD. Engagement in postnatal activities is minimal</p>	<p>Outcome:</p> <p>Families attending local Antenatal and postnatal care is delivered locally within group settings as a rolling programme and with a support group</p>
<p>Baseline evidence and measures</p> <p>No of attendees /families at ante natal classes, postcode recorded</p> <p>No of</p>	<p>Local Plan outcome indicators</p> <p>Short term: antenatal classes re-established in Craigshill</p> <p>Medium term: a suite of sessions aimed at family learning at ante natal stage is running with attendees including from 20% worst SIMD</p>
How this fits into:	
<p>The Local Outcome Improvement Plan: We live in resilient, cohesive and safe communities. We live longer, healthier lives and have reduced health inequalities.</p>	
<p>WLCPP Anti poverty strategy 2018-23 'Taking Action for Change'</p> <ul style="list-style-type: none"> • Targeting services to reduce inequalities • Shifting resources upstream to deliver preventable measures • Ensuring that we obtain the maximum impact for our expenditure 	<p>Outcome 1: maximise financial resources of households on low incomes</p> <p>Outcome 5: low income households are able to access services and be socially and financially included</p> <p>Outcome 7: reduce the number of children living in relative poverty</p> <p>Outcome 8: increase opportunities for local people to fully participate in their communities and bring about change</p>

Ante natal & post natal involvement

Outcome required	What do we need to do	How are we going to do it	What do we need (resources) to do it	Who is going to do it	Timeframe	How will we know we are succeeding? outcome indicator/outputs
Families to-be and new families access services and activities antenatally and post-natally		<p>Find out amount of live births per year</p> <p>Mapping undertaken</p> <p>Bring key organisations and services together to identify current gaps</p> <p>Pre birthing support developed locally that complements best start</p> <p>Monitored including</p>		<p>Reg officer</p> <p>Daisy Drop In</p> <p>Mid wives, PIMAP, Kidzeco, Almond Housing? Adult learning</p>		<p>84 live births in 2017. This has been increasing by 10 each year from 2015</p> <p>Mapping of local support activities of ante natal and post natal</p> <p>Early years session on 10th May at Kidz n Kin delivered</p>
	Meet with adult learning,	From gaps identified and potential sessions	Adult learning team Venue—Daisy Drop In	Adult learning/ Midwife/Daisy drop in		Family learning Sessions running in baby brain development and relaxation talking to bump



Speech and language

Key Issues /needs identified:

Current position:

Children at 27 –30 month check are presenting with poor speech and language . Through Pupil equity Fund many resources has been put in place to support pupils within nursery, primary and high school settings. The gap in services is pre birth to 2 years

Outcome:

Children are reaching their developmental milestones in speech and language and literacy and numeracy

Baseline evidence and measures

36% of SLC(YoB2012) (Speech, language , Communication) new/previous concerns for 27 -30 month reviews in Craigshill 2014-2015 (WL20.8%)

6.49% of SLC referrals for all 27-30 month (YoB 2012) reviews in Craigshill 2014-2015 (WL 4.3%)

Local Plan outcome indicators

Short term: families participating in post natal activity

Medium term: Children reaching their developmental milestones at 15 month HV check

How this fits into:

The Local Outcome Improvement Plan: We live in resilient, cohesive and safe communities. We live longer, healthier lives and have reduced health inequalities.

WLCPP Anti poverty strategy 2018-23 'Taking Action for Change'

- Targeting services to reduce inequalities
- Shifting resources upstream to deliver preventable measures
- Ensuring that we obtain the maximum impact for our expenditure

Speech and language

Outcome required	What do we need to do	How are we going to do it	What do we need (resources) to do it	Who is going to do it	Timeframe	How will we know we are succeeding? outcome indicator/outputs
Children have reached their developmental milestones in speech and language at the 27-30 month check	Enable all almond housing tenant to have the opportunity to take up the Imagination library books for children 0-5 years	<p>Registering at the daisy has a column on the form to ask if they are almond housing tenants</p> <p>Ask in the playgroup for it to be on the registration form</p> <p>Create a referral pathway to enable the Imagination project to access Daisy clients and increase uptake</p>	<p>admin</p> <p>Create a dialogue between agencies and create a clear workable pathway</p>	<p>Almond housing, Daisy Drop In, Daisy playgroup</p> <p>Daisy, Almond housing</p>	September 2018	Increase uptake of the imagination project with almond housing tenants
		<p>Additional support and actions developed to support Speech and language and early literacy from pre birth to 3 years</p> <p>Look at funding for dual language books & for books for pre school children not in Almond housing</p>		<p>Daisy drop In</p> <p>Almond Housing</p> <p>Health Visitors</p> <p>Adult learning volunteers</p>		



Early literacy and numeracy skills

Key Issues /needs identified:	
Current position:	Outcome: Children are reaching their developmental milestones in early literacy and numeracy
Baseline evidence and measures <p>In 2017/18 76.6% of children at the end of P1 are reaching their developmental milestones in Reading, (81.76% WL average) <i>data source WLC education services</i></p> <p>In 2017/18 79.79% of children at the end of P1 are reaching their developmental milestones in writing, (79.75% WL average) <i>data source WLC education services</i></p> <p>In 2017/18 81.91% of children at the end of P1 are reaching their developmental milestones in listening and talking (85.70% WL average) <i>data source WLC education services</i></p> <p>In 2017/18 87.23% of children at the end of P1 are reaching their developmental milestones in listening and talking (85.70% WL average) <i>data source WLC education services</i></p>	Local Plan outcome indicators Short term: . Medium term: Children are reaching their developmental milestones in speech and language at 27—30 HV month check
How this fits into:	
The Local Outcome Improvement Plan: We live in resilient, cohesive and safe communities. We live longer, healthier lives and have reduced health inequalities.	
WLCPP Anti poverty strategy 2018-23 ‘Taking Action for Change’ <ul style="list-style-type: none"> • Targeting services to reduce inequalities • Shifting resources upstream to deliver preventable measures • Ensuring that we obtain the maximum impact for our expenditure 	

early literacy and numeracy

Outcome required	What do we need to do	How are we going to do it	What do we need (resources) to do it	Who is going to do it	Timeframe	How will we know we are succeeding? outcome indicator/outputs
<p>Children are ready for school and reaching their early literacy and numeracy milestones at p1</p>	<p>Enable all almond housing tenant to have the opportunity to take up the Imagination library books for children 0-5 years</p>	<p>Registering at the daisy has a column on the form to ask if they are almond housing tenants</p> <p>Ask in the playgroup for it to be on the registration form</p> <p>Create a referral pathway to enable the Imagination project to access Daisy clients and increase uptake</p>	<p>admin</p> <p>Create a dialogue between agencies and create a clear workable pathway</p>	<p>Almond housing, Daisy Drop In, Daisy playgroup</p> <p>Daisy, Almond housing</p>	<p>September 2018</p>	<p>Increase uptake of the imagination project with almond housing tenants</p>

Opportunities for positive life experiences for children

Key Issues /needs identified: positive life experiences for children	
Current position:	Outcome:
Baseline evidence and measures	Local Plan outcome indicators Short term: Medium term:
How this fits into: The Local Outcome Improvement Plan: We live in resilient, cohesive and safe communities. We live longer, healthier lives and have reduced health inequalities.	
WLCPP Anti poverty strategy 2018-23 'Taking Action for Change' <ul style="list-style-type: none">• Targeting services to reduce inequalities• Shifting resources upstream to deliver preventable measures• Ensuring that we obtain the maximum impact for our expenditure	

Opportunities for positive life experiences for children

Outcome required	What do we need to do	How are we going to do it	What do we need (resources) to do it	Who is going to do it	Timeframe	How will we know we are succeeding? outcome indicator/outputs