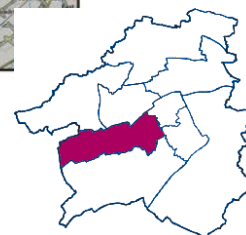
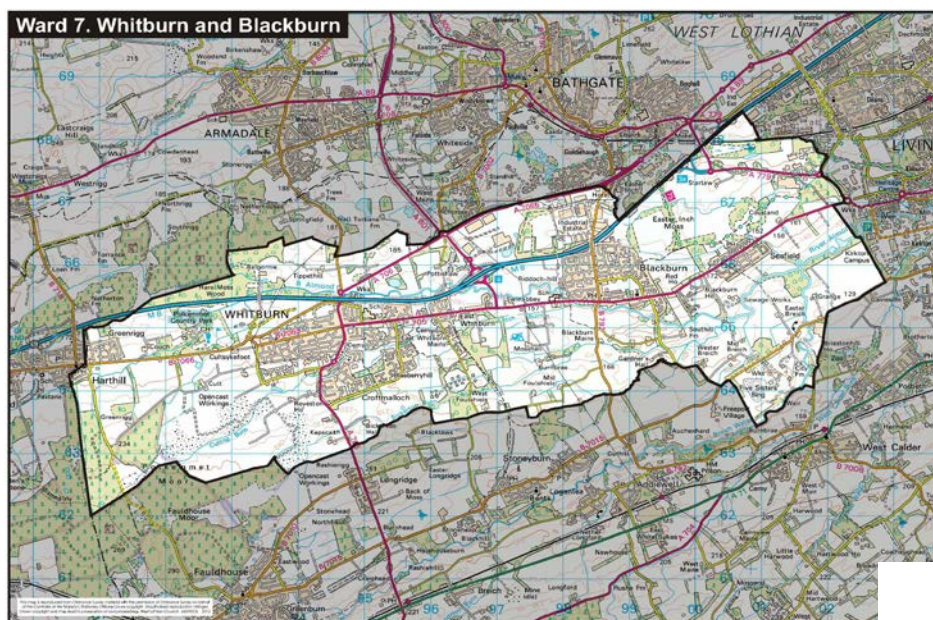


# Whitburn and Blackburn Ward Profile

Community Regeneration Officer: Scott McKillop

June 2015



## Table of Contents

- [Introduction](#)
- [West Lothian Information](#)
- [Scottish Index of Multiple Deprivation – West Lothian](#)
  - [Data Zones in the Most Deprived 20% in Scotland and West Lothian](#)
- **Key Statistics**
  - [Key Statistics](#)
  - [Health](#)
  - [Population and Benefit](#)
  - [Whitburn and Blackburn – Datzones in the Lowest 20% in West Lothian](#)
- [Datezone Maps](#)
- [Census 2011](#)
- [Employment / Employability](#)
- [Child Poverty](#)
- [Useful Information and Links](#)

# Introduction

Ward Profiles have been created for all nine wards in West Lothian, collating relevant data from national and local sources. The purpose of these profiles is to provide up to date data and key information consistently across West Lothian to assist groups/decision-makers when setting priorities for an area or to inform and evidence need.

## Elected Representatives

The Whitburn and Blackburn ward has four councillors, all of whom are elected on a proportional voting system to represent the whole ward. The four councillors meet regularly as a Local Area Committee. The Chair is George Paul. Those elected in May 2012 for five years are:-

|   |   |  |   |
|---|---|--|---|
|  |  |  |  |
| Jim Dickson<br>(Scottish National Party)  | Mary Dickson<br>(Scottish National Party)   | George Paul<br>(Scottish Labour Party)   | Barry Robertson<br>(Scottish Labour Party)  |

The ward is largely within the Linlithgow constituency for the Scottish Parliament which is represented by Fiona Hyslop MSP. An area to the east of Blackburn, including Seafield, is in the Almond Valley constituency which is represented by Angela Constance MSP. There are also seven list MSPs for the Lothians whose details are on the Scottish Parliament website.

The ward is divided between the Livingston and the Linlithgow and East Falkirk constituencies for the Westminster Parliament. The dividing line runs through Blackburn with the area to the west in Linlithgow and Falkirk, represented by Michael Connarty MP, and the area to the east is in Livingston represented by Graeme Morrice MP.

There are six Members of the European Parliament who represent the whole of Scotland. Information on these is available on the European Parliament website [www.europarl.org.uk](http://www.europarl.org.uk)

## Main Settlements

This is the fifth largest ward with a population of 24,640 (based on Mid-2013 GRO Population Estimates) and includes the communities of Blackburn, Greenrigg, Seafield and Whitburn / East Whitburn. The largest settlement in the ward is Whitburn which combined with East Whitburn has 11,730 residents (Mid-2010 GRO Population Estimates); it has close links to the M8 motorway which bypasses the town. The Heartlands project is developing on the west of the town, renovating the disused land surrounding the old Polkemmet Colliery and will have a positive impact on the local economy and make-up of the town and surrounding communities.

Blackburn has a population of 5,250 although there have been housing developments within the village since that count and there is continued development around Easter Inch. The first Local Nature Reserve (LNR) in West Lothian is located on over 400 acres of public land between Blackburn and Seafield (population 1,360). Both Seafield and Greenrigg (1,164) have recently experienced increases in their populations.

The demographics of the ward are as follows:

| Age group    | % in ward | % in WL |
|--------------|-----------|---------|
| Under 16     | 20.31     | 19.88   |
| Working age  | 62.63     | 63.34   |
| Older people | 17.06     | 16.78   |

Source: Scottish Neighbourhood Statistics, [www.sns.gov.uk](http://www.sns.gov.uk)

[Back to Top](#)

# West Lothian Information

West Lothian information has been provided in each profile to provide a wider context of the profile for that ward.

## West Lothian Single Outcome Agreement

List of Outcomes agreed by the Community Planning Partnership in February 2013 which form the Single Outcome Agreement:

- Our children have the best start in life and are ready to succeed
- We are better educated and have access to increased and better quality learning and employment opportunities
- Our economy is diverse and dynamic, and West Lothian is an attractive place for doing business
- We live in resilient, cohesive and safe communities
- People most at risk are protected and supported to achieve improved life chances
- Older people are able to live independently in the community with an improved quality of life
- We live longer, healthier lives and have reduced health inequalities.
- We make the most efficient and effective use of resources by minimising our impact on the built and natural environment.

More information is available on the following link: <http://www.westlothian.gov.uk/communityplanning>

## West Lothian Council Priorities

Following the Delivering Better Outcomes consultation in 2012, West Lothian Council have set priorities as detailed in the following table.


|  <b>Analysis summary:</b><br>The responses were analysed to evaluate if the council had the right priorities for West Lothian and then to rank the importance of priorities.<br><br>The top rankings were for priorities concerned with early years, school children, older people and those affected by joblessness and poverty. This confirms the community's support for the council's approach to target services and resources to those most in need. | Priority   | Consultation:<br>Average Ranking |
|---|--|----------------------------------|
|   | Ensuring children have the best possible start in life   | 1                                |
|   | Improving job opportunities, especially for young people   | 2                                |
|   | Improving qualifications and ensuring as many school leavers as possible get a job or go into further/higher education or training | 3                                |
|   | Improving the quality of life for older people   | 4                                |
|   | Minimising the effects of poverty and deprivation and promoting equality   | 5                                |
|   | Reducing crime and making our communities safer  | 6                                |
|   | Improving people's health  | 7                                |
|   | Looking after the environment  | 8                                |

Figure 1: Priority Analysis from Delivering Better Outcomes Consultation 2012

More information is available on the following link: <http://www.westlothian.gov.uk/article/1952/Corporate-Plan>

## **West Lothian Regeneration Framework**

Within the Regeneration Framework are the following five themes:

- Employability and Employment;
- Early Years and Family Learning;
- Health and Wellbeing;
- Economic Development; and
- Community Capacity and Cohesion

More information is available on the following link: <http://www.westlothian.gov.uk/communityregeneration>

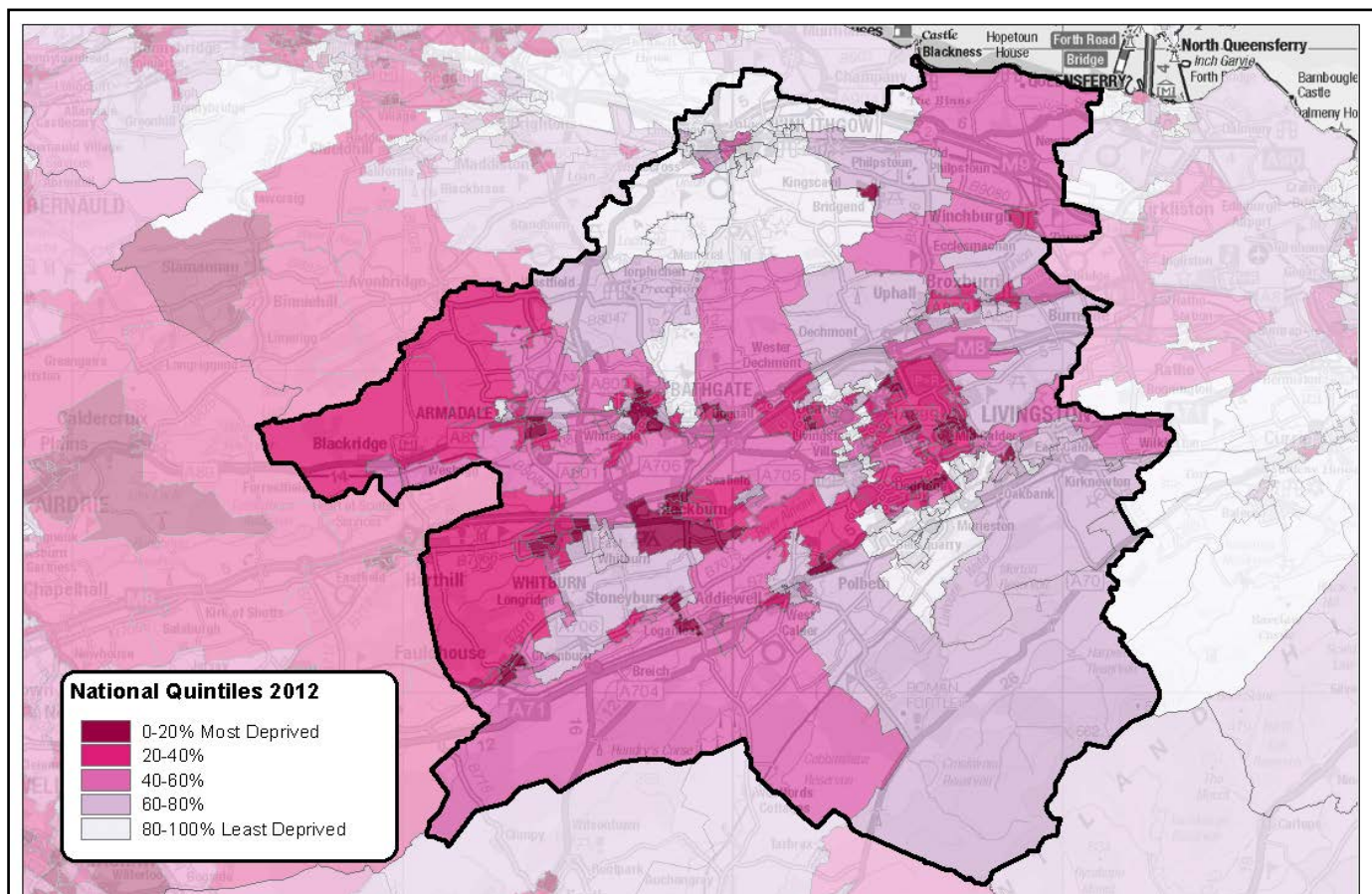
[Back to Top](#)

## Scottish Index Of Multiple Deprivation - West Lothian

The Scottish Index of Multiple Deprivation (SIMD) identifies small area concentrations of multiple deprivation across all of Scotland in a consistent way.

The SIMD provides a *relative* measure of deprivation which means that the SIMD 'ranks' can be used to compare data zones by providing a relative ranking. The SIMD has been used to identify Scotland's most deprived small areas on the overall index and each individual 'domain' (i.e. crime, income etc).

The above map shows what areas in West Lothian are ranked the lowest in comparison to Scotland—the darker the purple, the higher the levels of deprivation. Although West Lothian has very few datazones in the most deprived decile, most of this local authority's datazones are found in the second, third, and fourth deciles (towards the more deprived end of the distribution) in SIMD 2012. This is similar to the pattern observed for SIMD 2009.



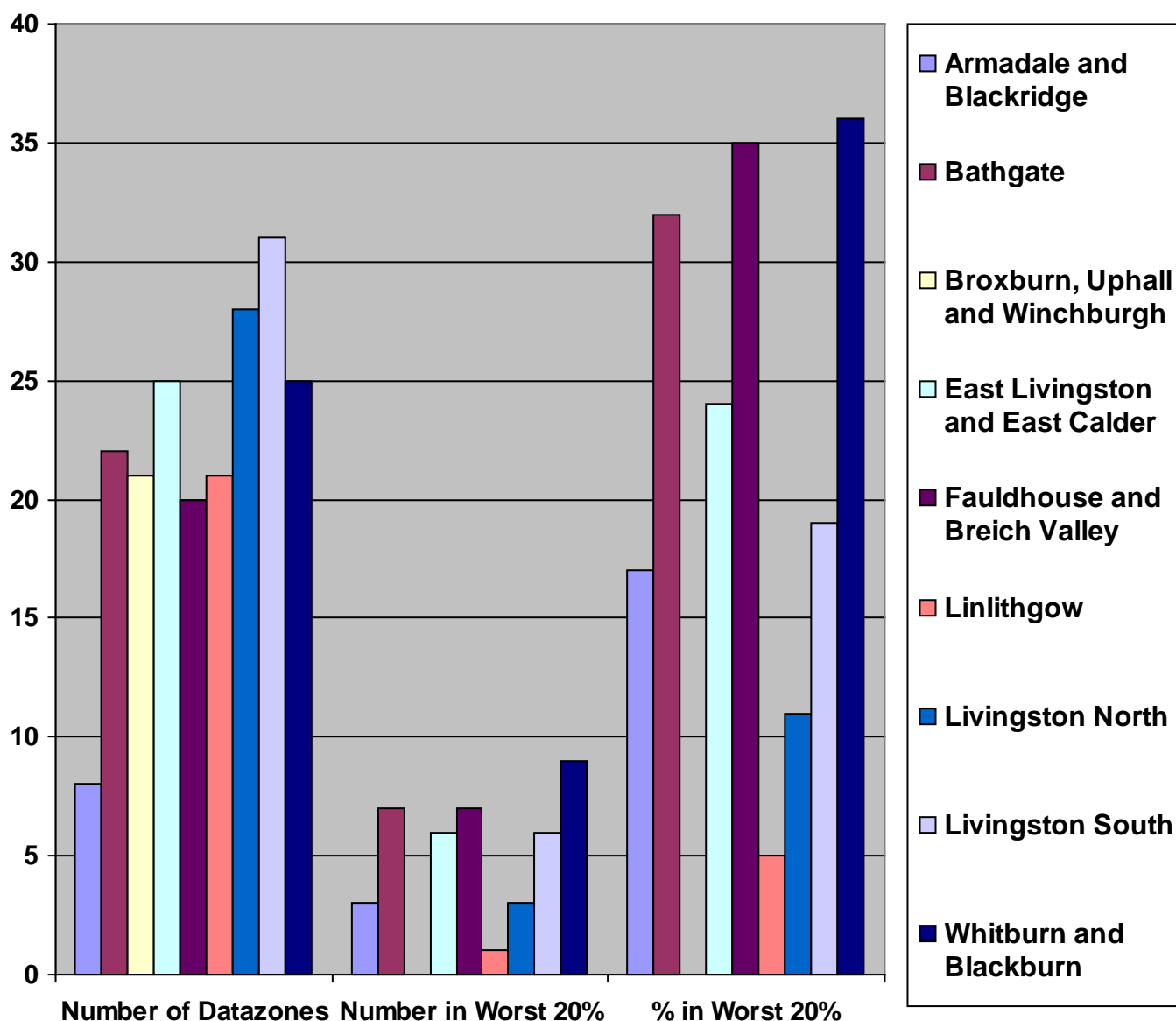
Reproduced by permission of Ordnance Survey on behalf of HMSO. © Crown copyright and database right (2012). All rights reserved. Ordnance Survey Licence number 100024655.

[Back to Top](#)

## Change in Distribution and Number of Datazones in Most Deprived 20% Category in Scotland

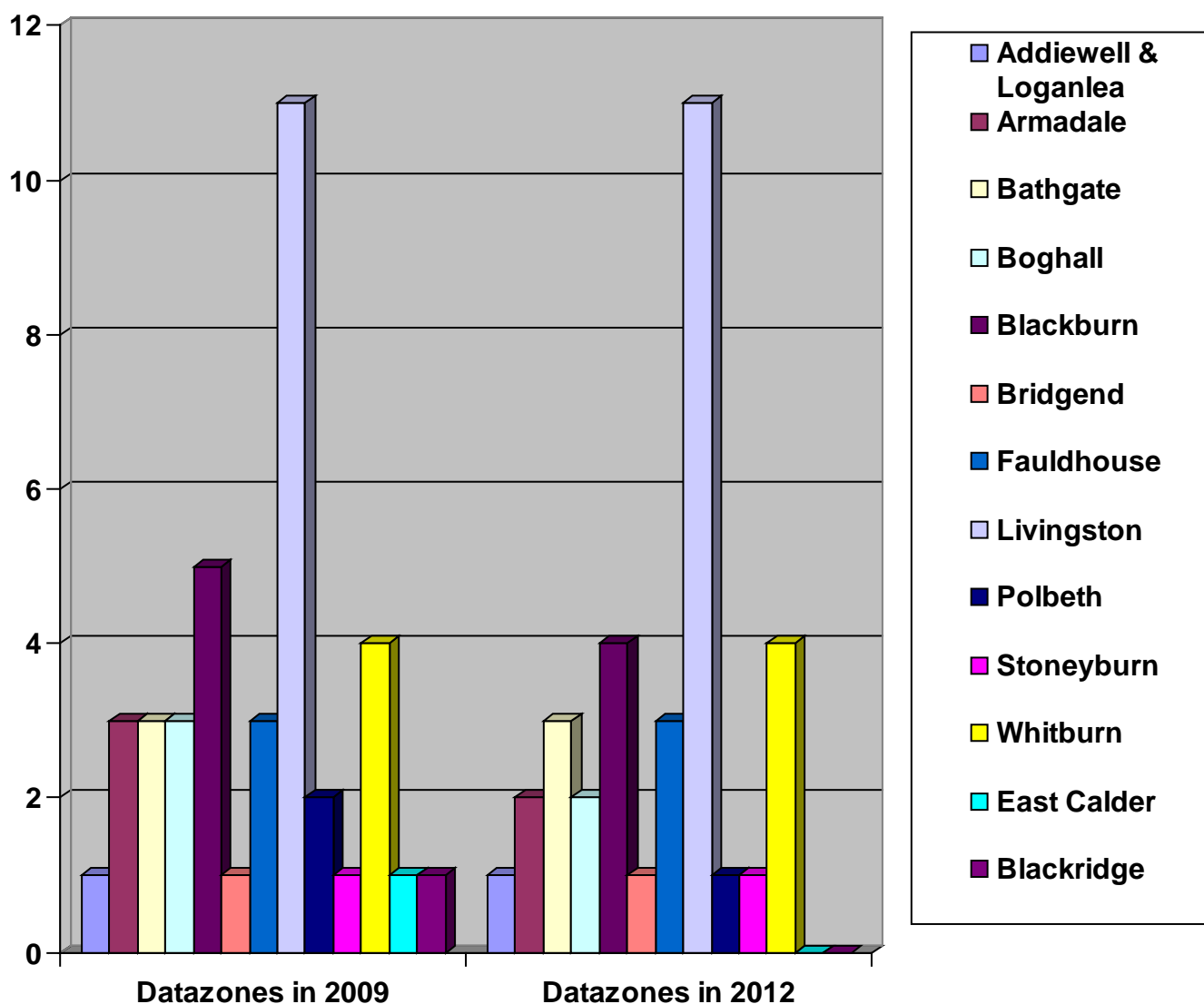
The table below shows a comparison of datazones that are in the lowest 20% in Scotland within the West Lothian multi-member wards.

| Ward Name                       | Number of Datazones | Number in Worst 20% | % in Worst 20% |
|---------------------------------|---------------------|---------------------|----------------|
| Armadaled and Blackridge        | 18                  | 3                   | 17%            |
| Bathgate                        | 22                  | 7                   | 32%            |
| Broxburn, Uphall and Winchburgh | 21                  | 0                   | 0              |
| East Livingston and East Calder | 25                  | 6                   | 24%            |
| Fauldhouse and Breich Valley    | 20                  | 6                   | 30%            |
| Linlithgow                      | 21                  | 1                   | 5%             |
| Livingston North                | 28                  | 3                   | 11%            |
| Livingston South                | 31                  | 6                   | 19%            |
| <b>Whitburn and Blackburn</b>   | <b>25</b>           | <b>9</b>            | <b>36%</b>     |



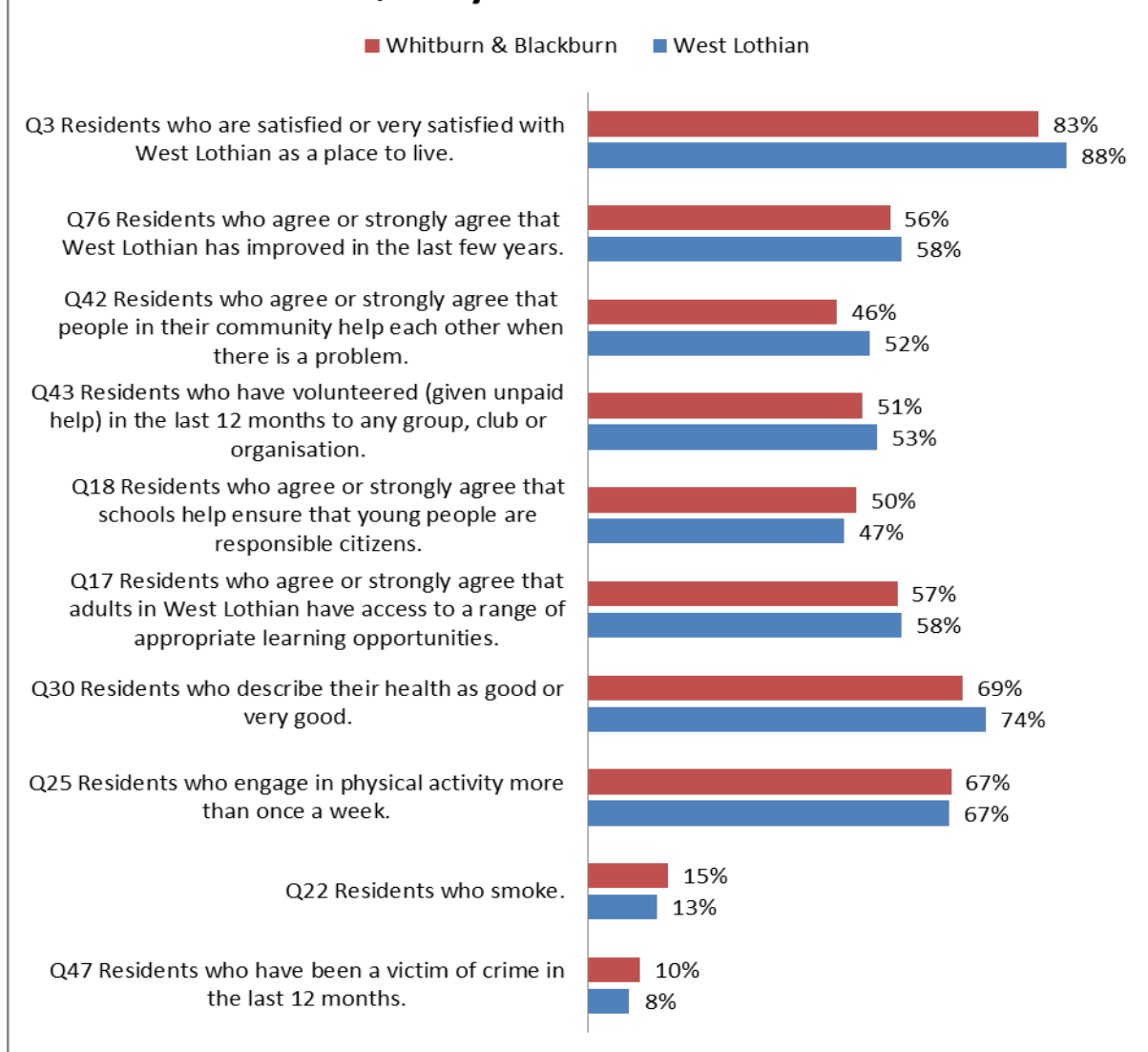
The table below shows a comparison of data zones in West Lothian in the lowest ranking 20% of all data zones in Scotland and shows how settlements in the Whitburn and Blackburn ward compare with settlements of other wards.

| Town/Village              | Datazones in 2009 | Datazones in 2012 |
|---------------------------|-------------------|-------------------|
| Addiewell & Loganlea      | 1                 | 1                 |
| Armadale                  | 3                 | 2                 |
| Bathgate                  | 3                 | 3                 |
| Boghall                   | 3                 | 2                 |
| <b>Blackburn</b>          | <b>5</b>          | <b>4</b>          |
| Bridgend                  | 1                 | 1                 |
| Fauldhouse                | 3                 | 3                 |
| Livingston                | 11                | 11                |
| Polbeth                   | 2                 | 1                 |
| Stoneyburn                | 1                 | 1                 |
| <b>Whitburn</b>           | <b>4</b>          | <b>4</b>          |
| East Calder               | 1                 | 0                 |
| Blackridge                | 1                 | 0                 |
| <b>TOTAL WEST LOTHIAN</b> | <b>39</b>         | <b>33</b>         |



[Back to Top](#)

## Quality of Life Indicators



The sixth West Lothian Quality of Life Survey for the Community Planning Partnership (CPP) was carried out in 2013 through the Citizens Panel. The Panel is structured to be completely representative of the West Lothian population, and representative at a multi member ward level. Panel members completed the survey in 2013 which was published in 2014.

A range of questions across a variety of subjects gave the CPP useful information about people's perceptions and experience of living in West Lothian. The CPP will use this information to plan, direct and prioritise services over the coming years. A sample of questions and results for West Lothian and the Whitburn and Blackburn ward are shown in the table above.

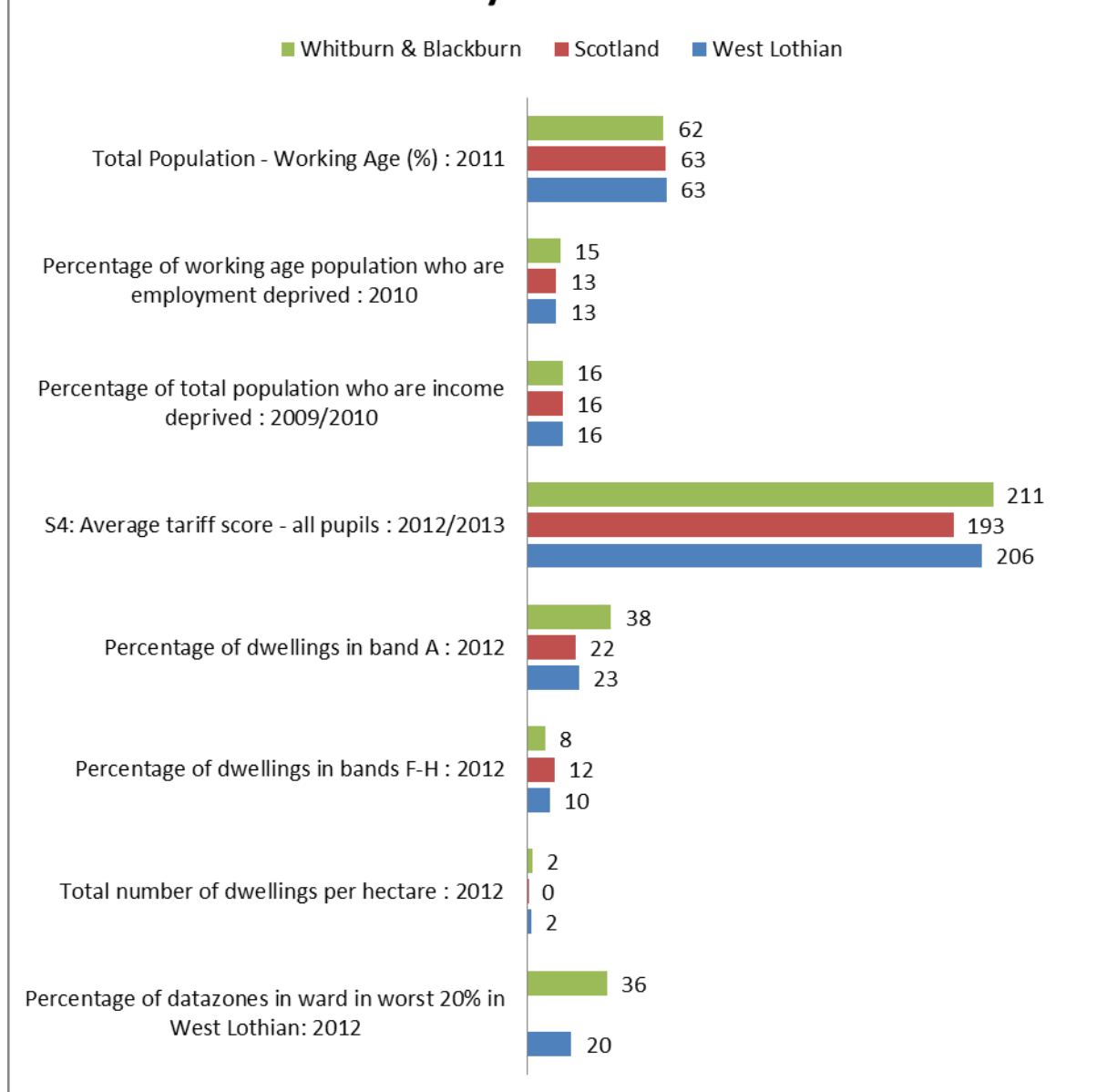
The levels of satisfaction with West Lothian as a place to live are very strong remaining at 88% in 2013. In the Whitburn and Blackburn ward the satisfaction level was slightly lower at 83% which is the same as 2010.

In general the Whitburn and Blackburn indicator levels are similar to the West Lothian figures with some being slightly higher and some slightly lower. There are two slight deviations from this rule. Only 46% think that neighbours will help each other when there is a problem and fewer people in the ward consider themselves to be in good health than the average across West Lothian.

The Summary of Key Findings and Commentary on the West Lothian Citizens' Panel Quality of Life Survey 2010 Research Report is at [http://www.westlothian.gov.uk/media/3698/Quality-of-life-2013---MMW-Results/pdf/Quality\\_of\\_Life\\_Survey\\_-\\_MMW\\_Summaries\\_v1\\_210214.pdf](http://www.westlothian.gov.uk/media/3698/Quality-of-life-2013---MMW-Results/pdf/Quality_of_Life_Survey_-_MMW_Summaries_v1_210214.pdf)

[Back to Top](#)

## Key Statistics



The table above are taken from the Scottish Neighbourhood Statistics Area Profile site at:-  
<http://www.sns.gov.uk/Reports/Report.aspx?ReportId=2&AreaTypeId=MW:Multi%20Member%20Wards&AreaId=S13002825>

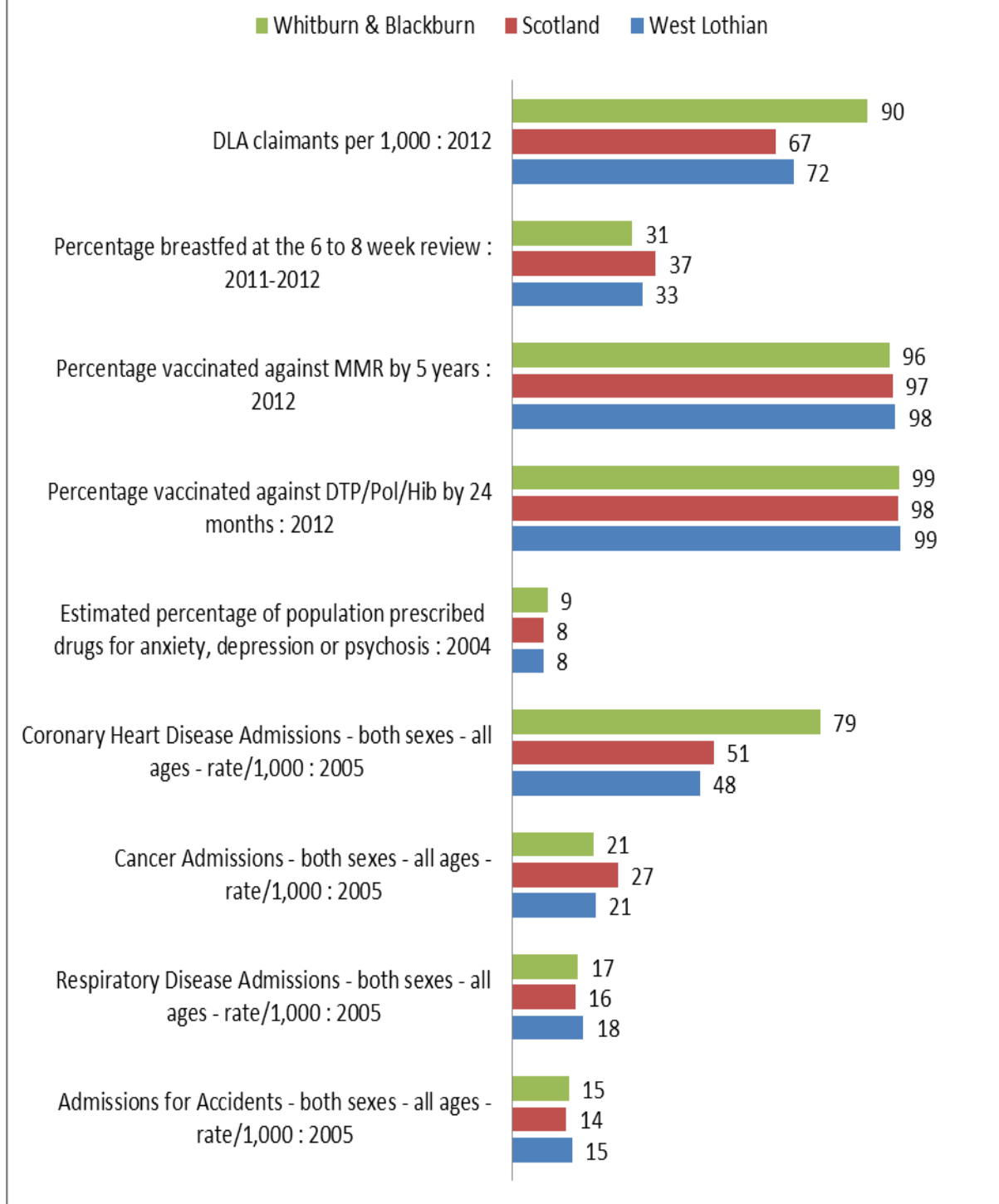
Whitburn and Blackburn is one of the larger wards in West Lothian with 24,640 residents, 13.98% of the total West Lothian population. There are 25 “datazones” in the ward – these are small areas with around 750 residents used to identify concentrations of multiple deprivation using indicators such as unemployment, income and health. There are 25 datazones in the Whitburn and Blackburn ward and 9 of these (36%) are in the worst 20% in West Lothian, significantly higher than the average.

The proportion of the population who are of “working age” is 62% compared to 63% for both West Lothian and Scotland. Whitburn and Blackburn ward has a higher rate of employment deprivation at 15% as against 13% for West Lothian and Scotland. The ward has similar levels of income deprivation to West Lothian and Scotland.

There are a higher percentage of homes in the lowest council tax band and a lower percentage of homes in the highest council tax bands than is the case across wider West Lothian and Scotland. There is also a higher density of housing in the ward in comparison to West Lothian and Scotland reflecting the urban nature of the ward.

[Back to Top](#)

## Health Indicators



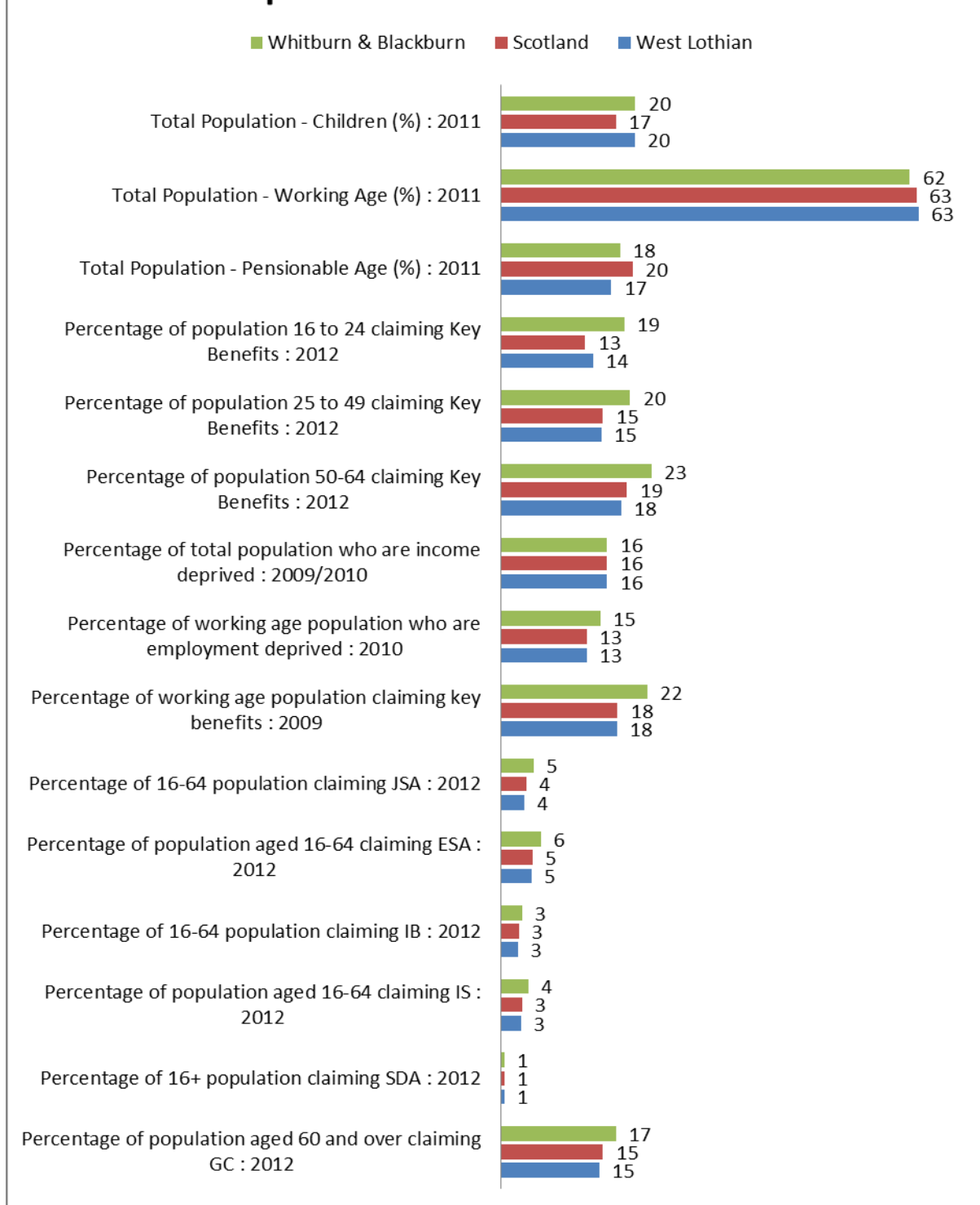
The above indicators allow a comparison between key health indicators in the ward against West Lothian and Scotland. They show that Whitburn and Blackburn has a significantly higher proportion of people claiming Disability Living Allowance than West Lothian and Scotland.

Hospital Admissions are broadly similar to the West Lothian average with the exception of Coronary Heart Disease which is 79%: considerably higher than the West Lothian figure.

The health indicators in the table above are taken from the Scottish Neighbourhood Statistics site at: - <http://www.sns.gov.uk>

[Back to Top](#)

## Population and Benefit Indicators



The above indicators allow for a comparison between key populations and benefit claimants in the ward against West Lothian and Scotland. They show that Whitburn and Blackburn ward has a similar population profile to West Lothian but is younger relative to the Scottish average with a higher proportion of children and a lower proportion of those of pensionable age.

The ward has a higher proportion of working age benefit claimants with 22% against 18% for both West Lothian and Scotland, and a similarly high proportion of those aged 60+ claiming Guaranteed Credits which is a passport benefit for those on low incomes. The proportion of people who are income deprived is the same as for West Lothian and Scotland while the proportion of employment deprived is slightly higher.

The population and benefit indicators in the table above are taken from the Scottish Neighbourhood Statistics site at: - <http://www.sns.gov.uk>

[Back to Top](#)

## Whitburn and Blackburn Ward – Datazones in the Worst 20% in West Lothian

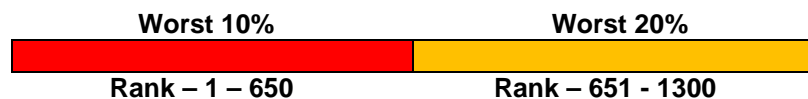
There are 25 “datazones” in the Whitburn and Blackburn ward and 9 of these (36%) are in the worst 20% in West Lothian, significantly higher than the average. More information on the ward itself is available on the following

link: <http://www.sns.gov.uk/Reports/Report.aspx?ReportId=2&AreaTypeId=MW:Multi%20Member%20Wards&AreaId=S13002825> (Please note that links may not work correctly the first time due to issues with the SNS website but will work on repeat click).

The table below shows the breakdown of how each datazone ranks for each domains of the Scottish Index of Multiple Deprivation. The figure gives the ranking for each domain/ datazone from the 6505 datazones there are in Scotland. The higher the number, the better the ranking and vice-versa. Those in the worst 10% and 20% are identified in the legend at the foot of the table.

In a West Lothian context, although SIMD measures multiple deprivations most areas do not have high scores across all deprivation domains – usually only experiencing high scores in 2 or 3 at most. As described above in respect of individual datazones, Income, Employment, Health and Education seem to be the main drivers of deprivation in West Lothian. Crime is a factor insofar as the higher scoring datazones tend to have town centres where there is presumably more reported crime. Neither of the Housing or Access Domains seem to have a bearing or influence the overall deprivation scores.

| SIMD Domain                       |        |            |        |           |                   |         |       |
|-----------------------------------|--------|------------|--------|-----------|-------------------|---------|-------|
| Data Zone                         | INCOME | EMPLOYMENT | HEALTH | EDUCATION | GEOGRAPHIC ACCESS | HOUSING | CRIME |
| Whitburn Union Drive (S01006326)  | 475    | 687        | 1061   | 388       | 6065              | 1399    | 455   |
| Whitburn Brown Street (S01006320) | 785    | 730        | 1013   | 738       | 4968              | 1686    | 637   |
| Whitburn Whitdale (S01006328)     | 1157   | 671        | 922    | 1992      | 5192              | 2405    | 1136  |
| Whitburn Hillcroft (S01006333)    | 789    | 1261       | 1368   | 1552      | 4138              | 3471    | 1914  |
| Blackburn North East (S01006350)  | 674    | 338        | 576    | 881       | 5656              | 2712    | 1700  |
| Blackburn North West (S01006349)  | 1323   | 1091       | 1480   | 337       | 3784              | 3119    | 1495  |
| Blackburn Riddochill (S01006330)  | 1334   | 1132       | 1094   | 1034      | 4195              | 3551    | 590   |
| Blackburn West (S01006342)        | 1619   | 892        | 887    | 821       | 5141              | 3179    | 2483  |
| Blackburn East (S01006343)        | 1509   | 1243       | 804    | 1659      | 5574              | 3652    | 1847  |



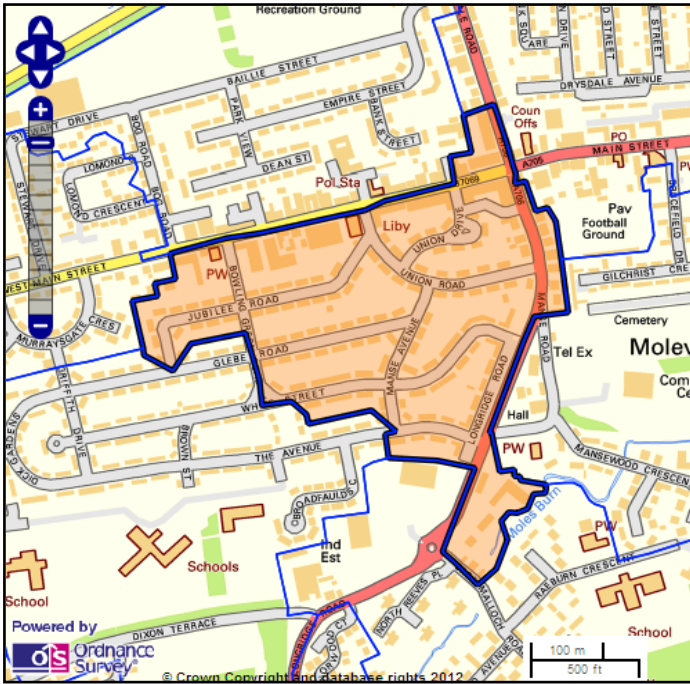
Unsurprisingly, these datazones tend to score low across most of the indicators as can be seen from the table above. In addition to the table, maps for each of these datazones have been provided on the following pages with links to the Scottish Neighbourhood Statistics site providing more detailed information.

[Back to Top](#)

# Datazone Maps

The following datazones/maps below are those within the ward are those found in the lowest 20% in West Lothian. These maps show the streets/areas they cover. For more information on each, please [click on the map](#) of each datazone which, in turn, will open up its profile on the Scottish Neighbourhood Statistics website. *(Please note that links may not work correctly the first time due to issues with the SNS website but will work on repeat click).*

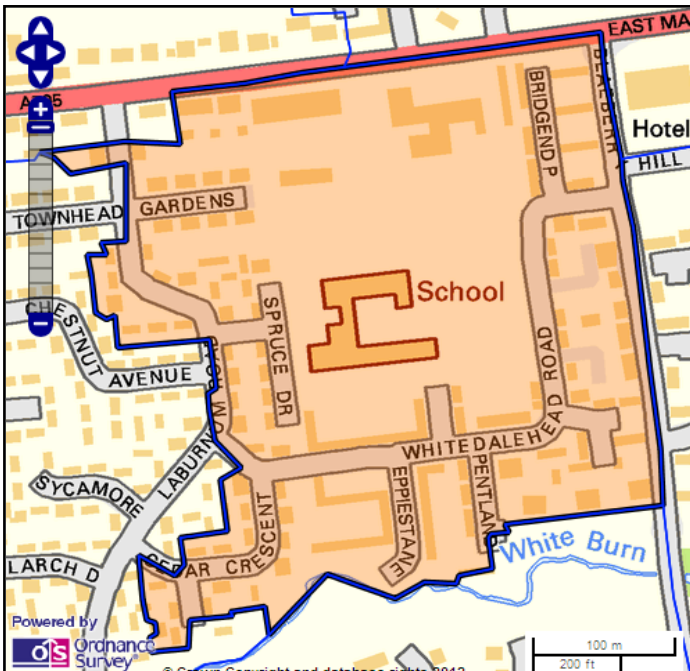
### Whitburn Union Drive (S01006326)



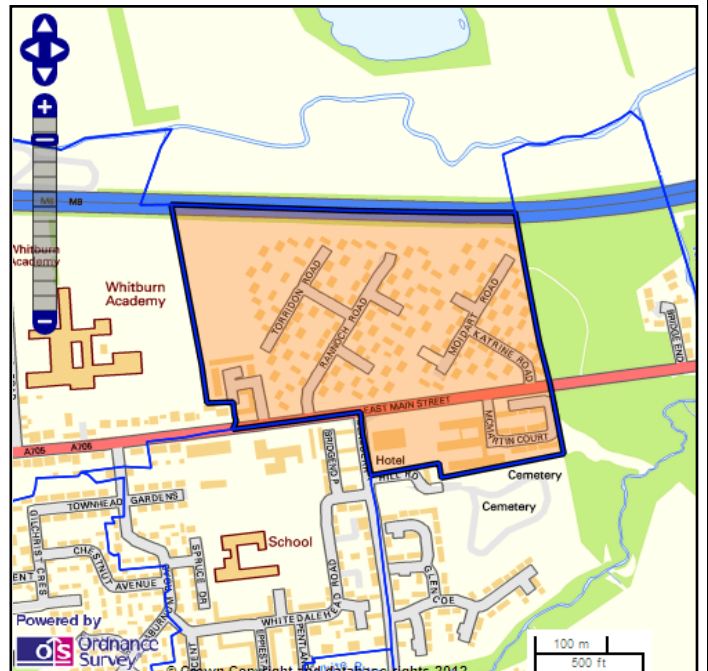
### Whitburn Brown Street (S01006320)



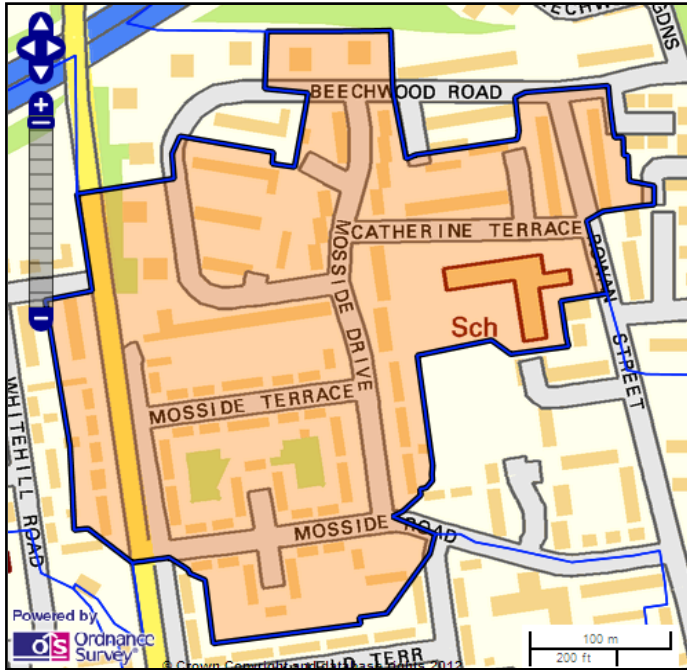
### Whitburn Whitdale (S01006328)



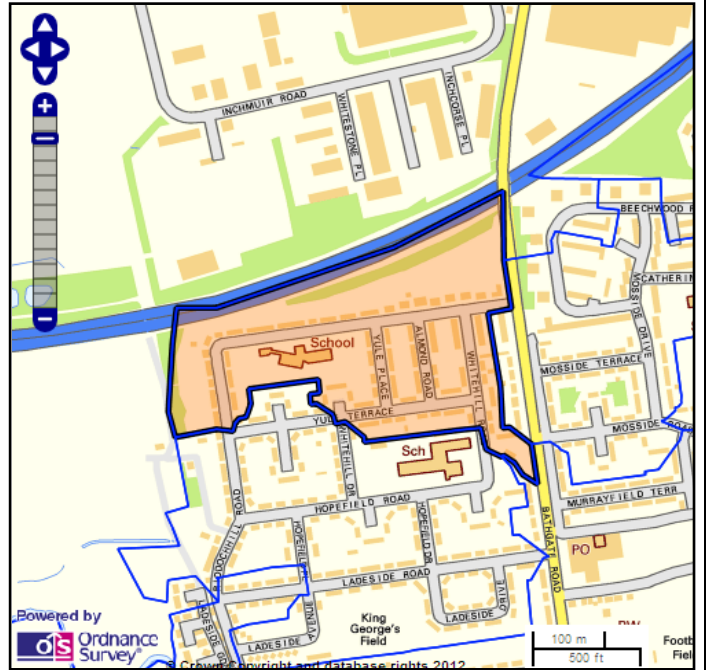
### Whitburn Hillcroft (S01006333)



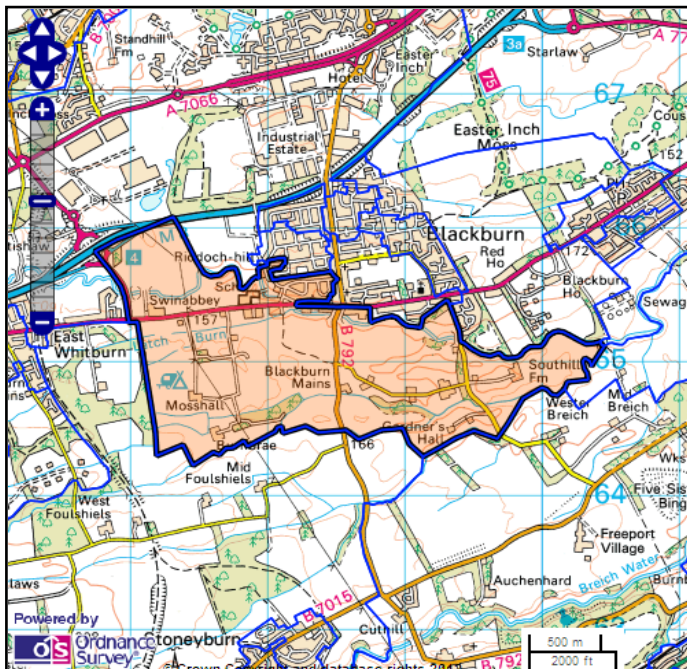
**Blackburn North East (S01006350)**



**Blackburn North West (S01006349)**



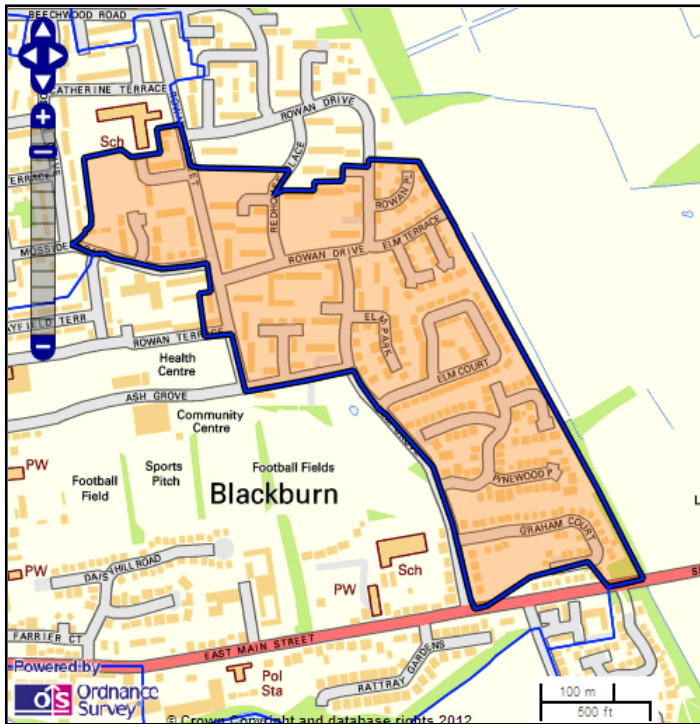
**Blackburn Riddochill (S01006330)**



**Blackburn West (S01006342)**



## Blackburn East (S01006343)



[Back to Top](#)

## Census 2011

There is an abundance of data available from the 2011 Census. For information on the types of data available please visit the following link: <http://www.scotlandscensus.gov.uk/>

If you would like specific information for an area, please contact Andrew Cotton, Economic Development Officer with the council on 01506 283080 or email: [Andrew.Cotton@westlothian.gov.uk](mailto:Andrew.Cotton@westlothian.gov.uk)

[Back to Top](#)

## Employment/ Employability

### West Lothian Council School Leaver Destination Return 2013/14 (Initial Destination Percentages)

| School                  | Destination   |                  |                   |          |            |              |            |
|-------------------------|---------------|------------------|-------------------|----------|------------|--------------|------------|
|                         | Total Leavers | Higher Education | Further Education | Training | Employment | % Pos*       | Unemployed |
| St. Kentigern's Academy | 193           | 39.9%            | 27.5%             | 3.6%     | 21.2%      | <b>94.3%</b> | 5.2%       |
| Bathgate Academy        | 188           | 41.5%            | 21.3%             | 6.4%     | 22.3%      | <b>92.6%</b> | 7.5%       |
| Whitburn Academy        | 172           | 33.1%            | 26.7%             | 9.3%     | 21.5%      | <b>92.4%</b> | 7.6%       |
| <b>West Lothian</b>     | 1986          | 41.1%            | 26.4%             | 4.5%     | 19.4%      | <b>93%</b>   | 6.8%       |

\*Includes Voluntary Work and Activity Agreements

### Unemployment by Multi Member Ward as of February 2015

| Multi Member Ward                | Male JSA claimants | Female JSA claimants | Total JSA claimants | JSA claimant rate |
|----------------------------------|--------------------|----------------------|---------------------|-------------------|
|                                  | number             | number               | number              | rate              |
| Armadale and Blackridge          | 129                | 60                   | 18                  | <b>1.9%</b>       |
| Bathgate                         | 190                | 82                   | 27                  | <b>2.3%</b>       |
| Broxburn, Uphall and Winchburgh  | 130                | 77                   | 20                  | <b>1.7%</b>       |
| East Livingston and East Calder  | 151                | 90                   | 24                  | <b>1.8%</b>       |
| Fauldhouse and the Breich Valley | 129                | 77                   | 20                  | 1.9%              |
| Linlithgow                       | 58                 | 30                   | 88                  | <b>0.9%</b>       |
| Livingston North                 | 128                | 59                   | 18                  | <b>1.3%</b>       |
| Livingston South                 | 173                | 91                   | 26                  | <b>1.6%</b>       |
| <b>Whitburn and Blackburn</b>    | <b>253</b>         | <b>106</b>           | <b>359</b>          | <b>2.3%</b>       |
| <b>West Lothian</b>              | <b>1,341</b>       | <b>672</b>           | <b>2,013</b>        | <b>1.8%</b>       |

Use this link to get up to date information about employment and other economic facts about West Lothian: [http://www.westlothian.com/Home/wl\\_economy/facts\\_figures/](http://www.westlothian.com/Home/wl_economy/facts_figures/)

[Back to Top](#)

## Child Poverty

In the figures presented below, from End Child Poverty's '*Child Poverty Map of the UK*', released in October 2014, children are classified as being in poverty if they live in families in receipt of out of work benefits or in receipt of in-work tax credits where their reported income is less than 60 per cent of median income. The measure is of income before housing costs, and therefore replicates the more modest, official estimate of how many children are in poverty, not taking account of the impact of high rent or mortgage payments.

| Percentage of children in poverty,<br>Oct-Dec 2013 | BEFORE<br>HOUSING<br>COSTS | AFTER HOUSING<br>COSTS |
|--|----------------------------|------------------------|
| <b>Local Authority and wards</b>                   |                            |                        |
|  |                            |                        |
| <b>West Lothian</b>                                | <b>13.27%</b>              | <b>21.24%</b>          |
|  |                            |                        |
| Linlithgow   | 6.80%                      | 11.03%                 |
| Broxburn, Uphall and Winchburgh                    | 11.89%                     | 19.12%                 |
| Livingston North                                   | 14.97%                     | 23.60%                 |
| Livingston South                                   | 13.23%                     | 21.26%                 |
| East Livingston and East Calder                    | 12.13%                     | 19.62%                 |
| Fauldhouse and the Breich Valley                   | 16.68%                     | 26.32%                 |
| <b>Whitburn and Blackburn</b>                      | <b>16.47%</b>              | <b>26.24%</b>          |
| Bathgate   | 12.19%                     | 19.60%                 |
| Armadale and Blackridge                            | 14.42%                     | 23.00%                 |

More information is available in the report on the following link: [http://www.endchildpoverty.org.uk/images/ecp/Report\\_on\\_child\\_poverty\\_map\\_2014.pdf](http://www.endchildpoverty.org.uk/images/ecp/Report_on_child_poverty_map_2014.pdf)

[Back to Top](#)

## Useful Information and Links

**Community Regeneration Officer:** Scott McKillop  
Telephone Office: 01506 281092  
Mobile: 07500 816 862  
E-mail: [Scott.McKillop@westlothian.gov.uk](mailto:Scott.McKillop@westlothian.gov.uk)

### Ward Action Plan:

This plans shows what and how partners across the Fauldhouse and The Breich Valley ward will be working together to achieve over the coming year, what outcomes they are working towards and how they will measure progress against these.[the local ward plans will be available electronically soon at this web address <http://www.westlothian.gov.uk/article/3859/Whitburn-and-Blackburn-Ward>

### Scottish Fire and Rescue

The Local Fire and Rescue Plan for West Lothian: [http://www.firescotland.gov.uk/media/610232/sfrs\\_local\\_plan\\_west\\_lothian\\_v1.pdf](http://www.firescotland.gov.uk/media/610232/sfrs_local_plan_west_lothian_v1.pdf)

This plan is the mechanism through which the aims of the SFRS's Strategic Plan 2013 – 2016 are delivered to meet the agreed needs of the West Lothian communities. <http://www.firescotland.gov.uk/>

### Police Scotland

Ward profiles have been produced outlining the service priorities for each ward. <http://www.scotland.police.uk/your-community/the-lothians-and-scottish-borders/west-lothian/whitburn-and-blackburn/>

### Local Development Plan

The Local Development Plan provides a planning framework for delivering the planning vision for West Lothian, against which planning applications are assessed. The following web site contains information within each of the sections which is relevant to the ward: <http://www.westlothian.gov.uk/LDP>

### Annual Ward Employability Report

The multi-agency West Lothian Working Together Group produced a report for 2013/4 regarding the employability support provided by various agencies and the impact it is having on employability in the ward. <http://coins.westlothian.gov.uk/coins/submissiondocuments.asp?submissionid=23085>

### COINS

COINS is the site where West Lothian Council keeps its committee reports and papers. These are public documents and can be viewed here: <http://coins.westlothian.gov.uk/coins/>

### Community News

The council web site hosts a page dedicated to local news. You can find out what is happening in Fauldhouse and The Breich Valley here: - <http://www.westlothian.gov.uk/whitburnandblackburnnews>

## Funding Newsletter

Community Regeneration produces a regular funding newsletter which outlines the funds accessible to voluntary organisations and groups in West Lothian. The latest version is available on the following link <http://www.westlothian.gov.uk/article/1980/Community-Grants>

## Community Councils

Community Councils are directly elected bodies which find out and express the views of the community to local authorities and other public bodies, and take action which they feel is in the interests of its community. There are three community councils in the ward – Blackburn, Seafield and Whitburn & Greenrigg.

More information and contact details at: <http://www.westlothian.gov.uk/communitycouncils> . For further information you can contact the council's Community Council Liaison Officer at the following address [lorraine.mcgrorty@westlothian.gov.uk](mailto:lorraine.mcgrorty@westlothian.gov.uk)

[Back to Top](#)



INVESTORS  
IN PEOPLE

[westlothian.gov.uk](http://www.westlothian.gov.uk)



West Lothian  
Council