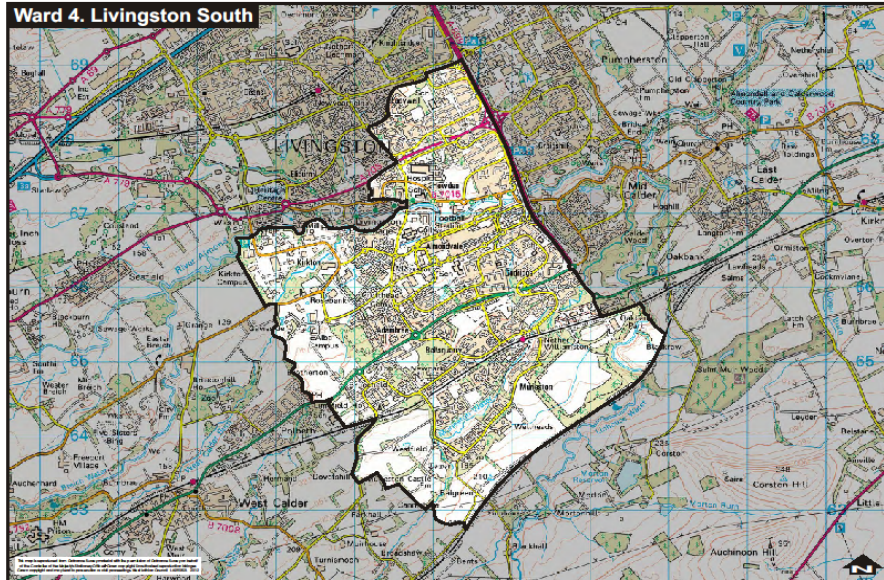


# Livingston South Ward Profile

Community Regeneration Officer: Laura Wilson

May 2015



## Table of Contents





- [Introduction](#)
- [West Lothian Information](#)
- [Scottish Index of Multiple Deprivation – West Lothian](#)
  - [Data Zones in the Most Deprived 20% in Scotland and West Lothian](#)
- **Key Statistics**
  - [Key Statistics](#)
  - [Health](#)
  - [Population and Benefit](#)
  - [Livingston South – Datazones in the Lowest 20% in West Lothian](#)
- [Datezone Maps](#)
- [Census 2011](#)
- [Employment / Employability](#)
- [Child Poverty](#)
- [Useful Information and Links](#)

# Introduction

Ward Profiles have been created for all nine wards in West Lothian, collating relevant data from national and local sources. The purpose of these profiles is to provide up to date data and key information consistently across West Lothian to assist groups/decision-makers when setting priorities for an area or to inform and evidence need.

## Elected Representatives

The Livingston South ward has four councillors, all of whom are elected on a proportional voting system to represent the whole ward. The four councillors meet regularly as a Local Area Committee. The Chair is Lawrence Fitzpatrick. Those elected in May 2012 for five years are:-

			
Lawrence Fitzpatrick (Scottish Labour Party)	Peter Johnston (Scottish National Party)	Danny Logue (Scottish Labour Party)	John Muir (Scottish National Party)

The ward is located within the Almond Valley constituency for the Scottish Parliament which is represented by Angela Constance MSP. There are also seven list MSPs for the Lothians whose details are on the Scottish Parliament website.

The Livingston South ward is located within the Livingston constituency for the Westminster Parliament and is represented by Graeme Morrice MP.

There are six Members of the European Parliament who represent the whole of Scotland. Information on these is available on the European Parliament website [www.europarl.org.uk](http://www.europarl.org.uk)

## Main Settlements

Livingston South is the largest of the nine West Lothian wards, with a population of 24,301 (based on Mid-2010 GRO Population Estimates - Localities). Like other Livingston wards, it is made up of a number of settlements, including Dedridge, Ladywell, Howden, Murieston, Bellsquarry and part of Livingston Village. The ward also includes Livingston town centre, West Lothian's largest retail centre comprising of The Centre, The Designer Outlet and a number of retail parks.

Howden is the smallest settlement in Livingston South with 3,455 residents, and is home to Howden Park Centre, (West Lothian's newly refurbished main arts centre), St John's Hospital and St Margaret's Academy. Dedridge is Livingston South's largest settlement (population 8,697). The James Young High School is based in Dedridge on Quentin Rise. Murieston and Bellsquarry are located next to each other, close to the A71 to Edinburgh and to Livingston South train station. Their combined population is 6,404.

The Ladywell settlement is at the north edge of the Livingston South ward and has a population of 4,663. Inveralmond Community High School serves the local community with leisure facilities.

The demographics of the ward are as follows:

Age group	% in ward	% in WL
Under 16	21.63	19.88
Working age	64.44	63.34
Older people	13.93	16.78

Source: Scottish Neighbourhood Statistics, [www.sns.gov.uk](http://www.sns.gov.uk)

[Back to Top](#)

# West Lothian Information

West Lothian information has been provided in each profile to provide a wider context of the profile for that ward.

## West Lothian Single Outcome Agreement

List of Outcomes agreed by the Community Planning Partnership in February 2013 which form the Single Outcome Agreement:

- Our children have the best start in life and are ready to succeed
- We are better educated and have access to increased and better quality learning and employment opportunities
- Our economy is diverse and dynamic, and West Lothian is an attractive place for doing business
- We live in resilient, cohesive and safe communities
- People most at risk are protected and supported to achieve improved life chances
- Older people are able to live independently in the community with an improved quality of life
- We live longer, healthier lives and have reduced health inequalities.
- We make the most efficient and effective use of resources by minimising our impact on the built and natural environment.

More information is available on the following link: <http://www.westlothian.gov.uk/communityplanning>

## West Lothian Council Priorities

Following the Delivering Better Outcomes consultation in 2012, West Lothian Council have set priorities as detailed in the following table.


 <b>Analysis summary:</b> The responses were analysed to evaluate if the council had the right priorities for West Lothian and then to rank the importance of priorities.  The top rankings were for priorities concerned with early years, school children, older people and those affected by joblessness and poverty. This confirms the community's support for the council's approach to target services and resources to those most in need.	Priority	Consultation: Average Ranking
	Ensuring children have the best possible start in life	1
	Improving job opportunities, especially for young people	2
	Improving qualifications and ensuring as many school leavers as possible get a job or go into further/higher education or training	3
	Improving the quality of life for older people	4
	Minimising the effects of poverty and deprivation and promoting equality	5
	Reducing crime and making our communities safer	6
	Improving people's health	7
	Looking after the environment	8

Figure 1: Priority Analysis from Delivering Better Outcomes Consultation 2012

More information is available on the following link: <http://www.westlothian.gov.uk/article/1952/Corporate-Plan>

## **West Lothian Regeneration Framework**

Within the Regeneration Framework are the following five themes:

- Employability and Employment;
- Early Years and Family Learning;
- Health and Wellbeing;
- Economic Development; and
- Community Capacity and Cohesion

More information is available on the following link: <http://www.westlothian.gov.uk/communityregeneration>

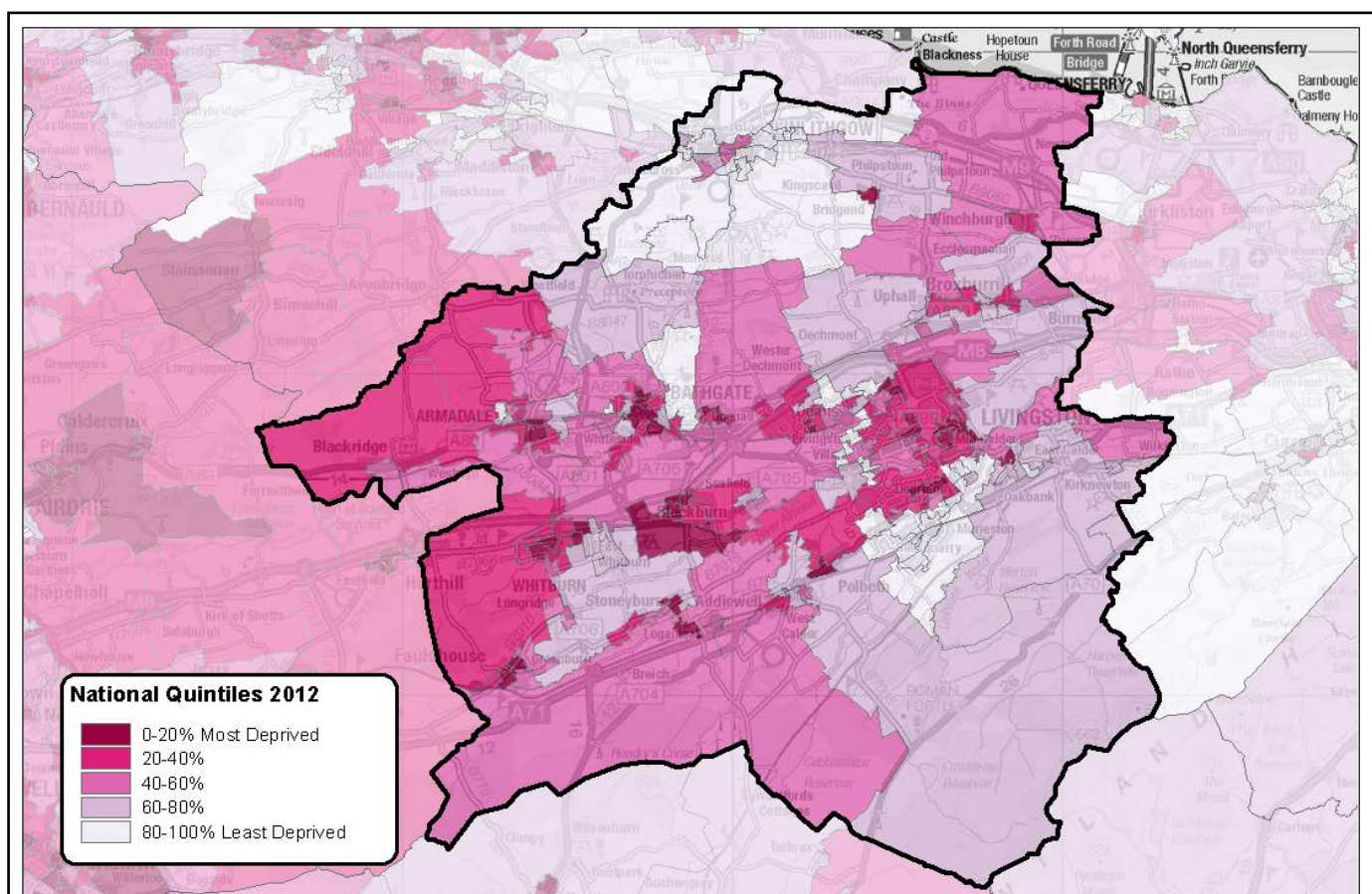
[Back to Top](#)

## Scottish Index of Multiple Deprivation - West Lothian

The Scottish Index of Multiple Deprivation (SIMD) identifies small area concentrations of multiple deprivation across all of Scotland in a consistent way.

The SIMD provides a *relative* measure of deprivation which means that the SIMD 'ranks' can be used to compare data zones by providing a relative ranking. The SIMD has been used to identify Scotland's most deprived small areas on the overall index and each individual 'domain' (i.e. crime, income etc).

The above map shows what areas in West Lothian are ranked the lowest in comparison to Scotland—the darker the purple, the higher the levels of deprivation. Although West Lothian has very few datazones in the most deprived decile, most of this local authority's datazones are found in the second, third, and fourth deciles (towards the more deprived end of the distribution) in SIMD 2012. This is similar to the pattern observed for SIMD 2009.



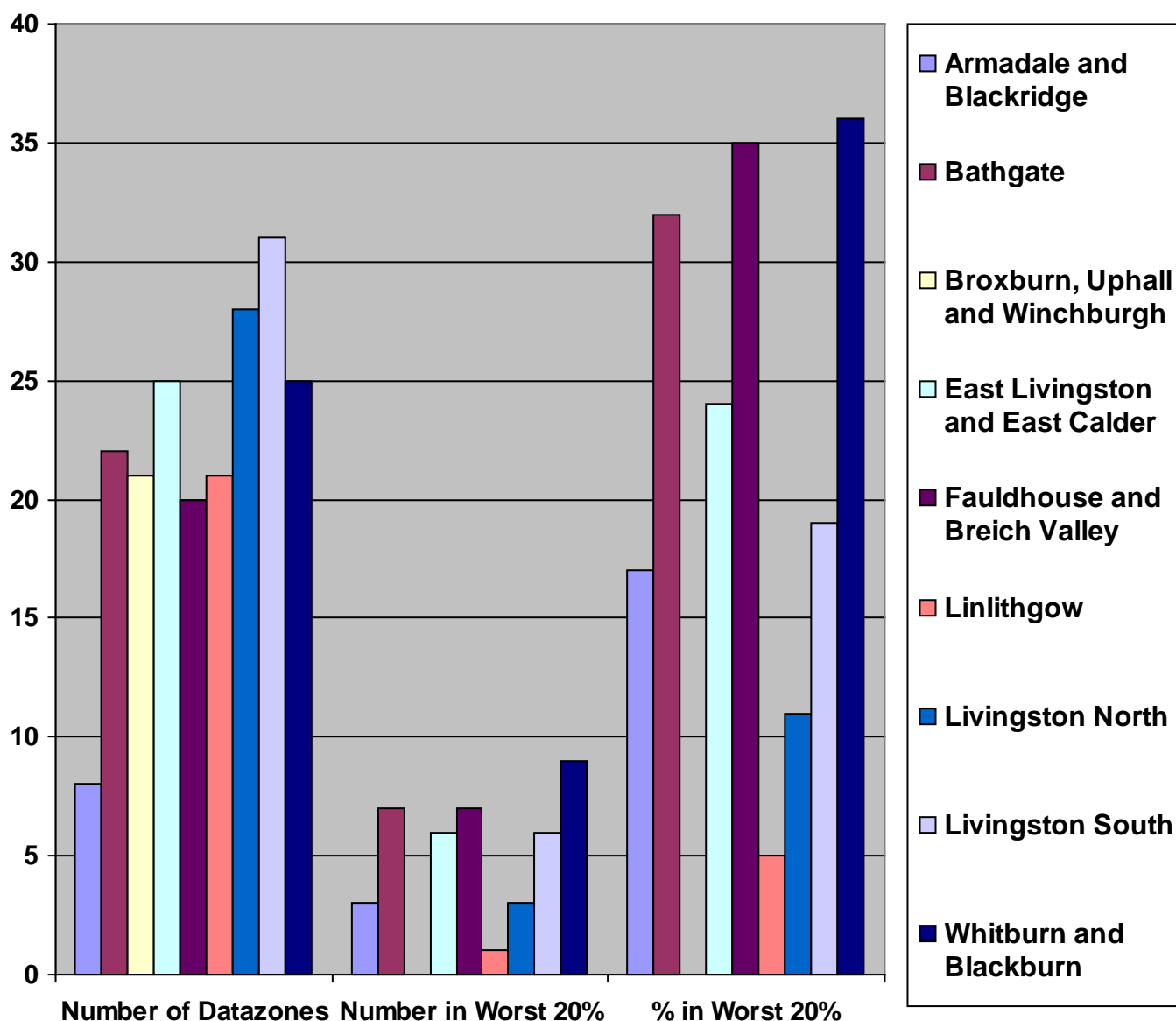
Reproduced by permission of Ordnance Survey on behalf of HMSO. © Crown copyright and database right (2012). All rights reserved. Ordnance Survey Licence number 100024655.

[Back to Top](#)

## Change in Distribution and Number of Datazones in Most Deprived 20% Category in Scotland

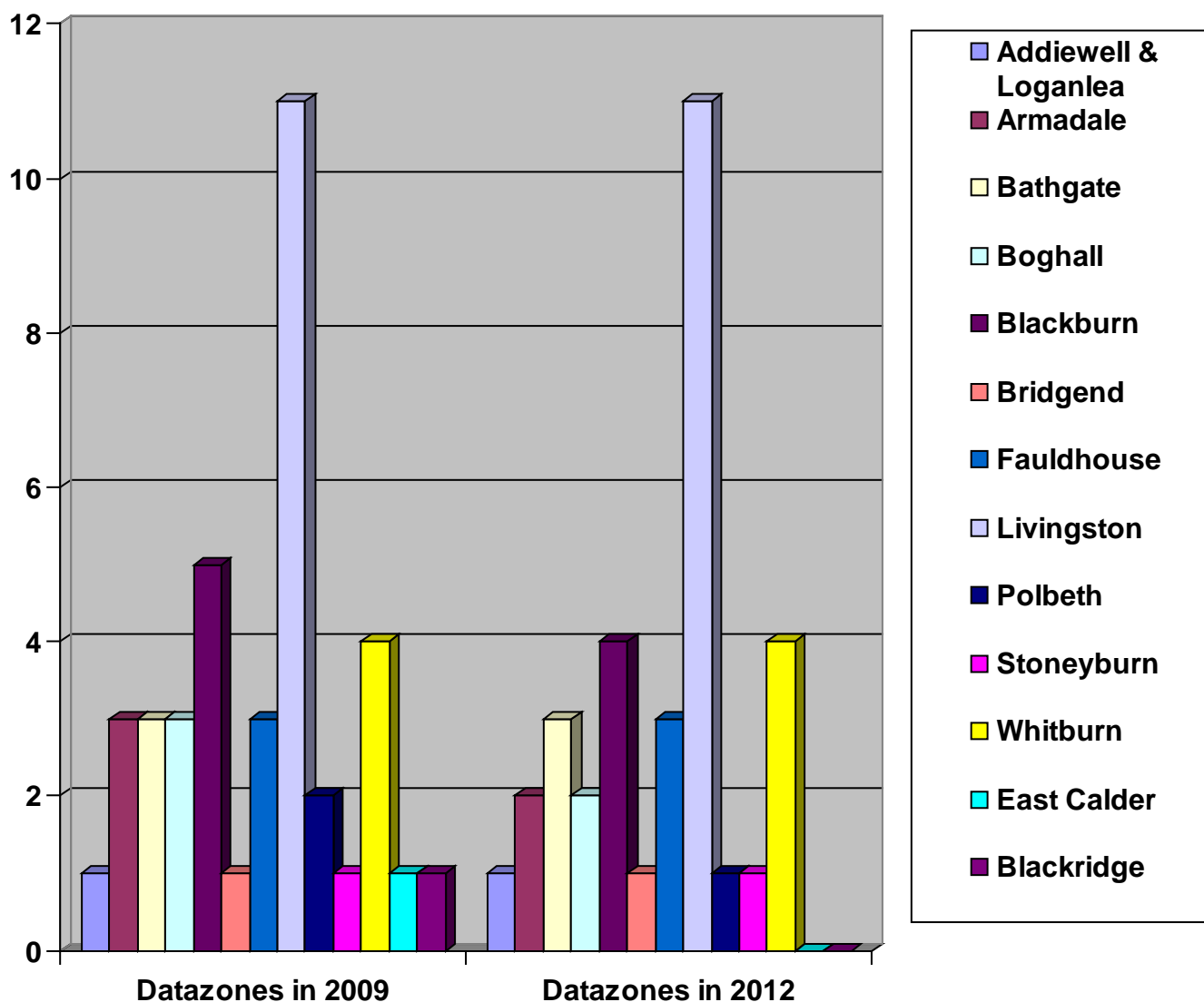
The table below shows a comparison of datazones that are in the lowest 20% in Scotland within the West Lothian multi-member wards.

Ward Name	Number of Datazones	Number in Worst 20%	% in Worst 20%
Armadaled and Blackridge	18	3	17%
Bathgate	22	7	32%
Broxburn, Uphall and Winchburgh	21	0	0
East Livingston and East Calder	25	6	24%
Fauldhouse and Breich Valley	20	6	30%
Linlithgow	21	1	5%
Livingston North	28	3	11%
<b>Livingston South</b>	<b>31</b>	<b>6</b>	<b>19%</b>
Whitburn and Blackburn	25	9	36%



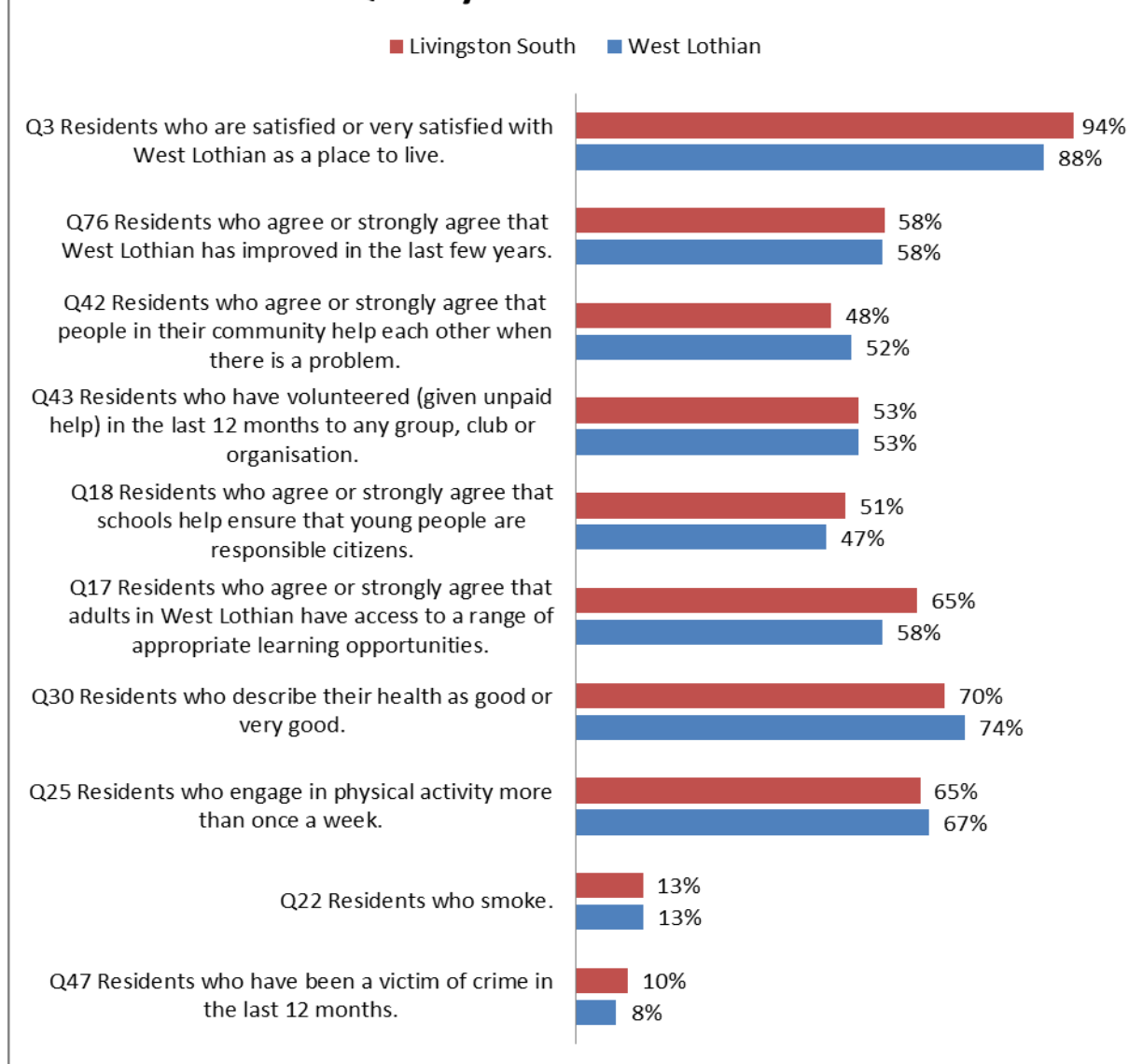
The table below shows a comparison of data zones in West Lothian in the lowest ranking 20% of all data zones in Scotland and shows how settlements in the Livingston South ward compares with settlements of other wards.

Town/Village	Datazones in 2009	Datazones in 2012
Addiewell & Loganlea	1	1
Armadale	3	2
Bathgate	3	3
Boghall	3	2
Blackburn	5	4
Bridgend	1	1
Fauldhouse	3	3
<b>Livingston</b>	<b>11</b>	<b>11</b>
Polbeth	2	1
Stoneyburn	1	1
Whitburn	4	4
East Calder	1	0
Blackridge	1	0
<b>TOTAL WEST LOTHIAN</b>	<b>39</b>	<b>33</b>



[Back to Top](#)

## Quality of Life Indicators



The sixth West Lothian Quality of Life Survey for the Community Planning Partnership (CPP) was carried out in 2013 through the Citizens Panel. The Panel is structured to be completely representative of the West Lothian population, and representative at a multi member ward level. Panel members completed the survey in 2013 which was published in 2014.

A range of questions across a variety of subjects gave the CPP useful information about people's perceptions and experience of living in West Lothian. The CPP will use this information to plan, direct and prioritise services over the coming years. A sample of questions and results for West Lothian and the Livingston South ward are shown in the table above.

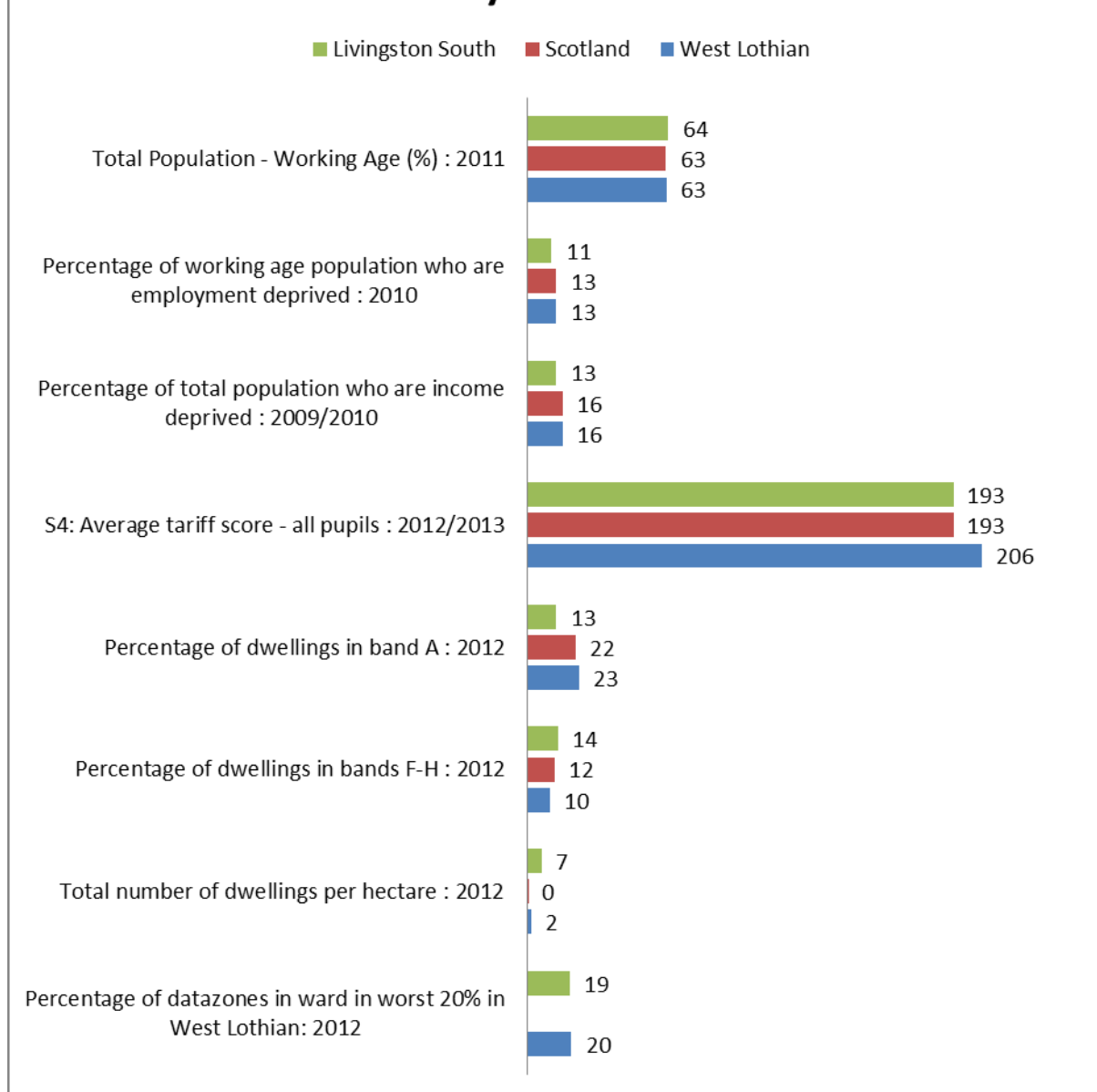
The levels of satisfaction with West Lothian as a place to live are very strong, increasing by 1% between surveys completed in 2010 ( 87%) and 2013 (88%). In the Fauldhouse and The Breich Valley ward however the satisfaction level dropped by 5% over the same period from 86% to 81%.

In general the Fauldhouse and Breich Valley levels are broadly similar to the West Lothian figures, with some being slightly higher and some slightly lower. There are two exceptions to this observation. Fewer residents in the ward reported being victims of crime, while a greater number of residents smoke than the West Lothian averages.

The Summary of Key Findings and Commentary on the West Lothian Citizens' Panel Quality of Life Survey 2010 Research Report is at [http :- http://www.westlothian.gov.uk/media/3698/Quality-of-life-2013---MMW-Results/pdf/Quality\\_of\\_Life\\_Survey\\_-\\_MMW\\_Summaries\\_v1\\_210214.pdf](http://www.westlothian.gov.uk/media/3698/Quality-of-life-2013---MMW-Results/pdf/Quality_of_Life_Survey_-_MMW_Summaries_v1_210214.pdf)

[Back to Top](#)

## Key Statistics



The table above are taken from the Scottish Neighbourhood Statistics Area Profile site at:-

<http://www.sns.gov.uk/Reports/Report.aspx?ReportId=2&AreaTypeId=MW:Multi%20Member%20Wards&AreaId=S13002825>

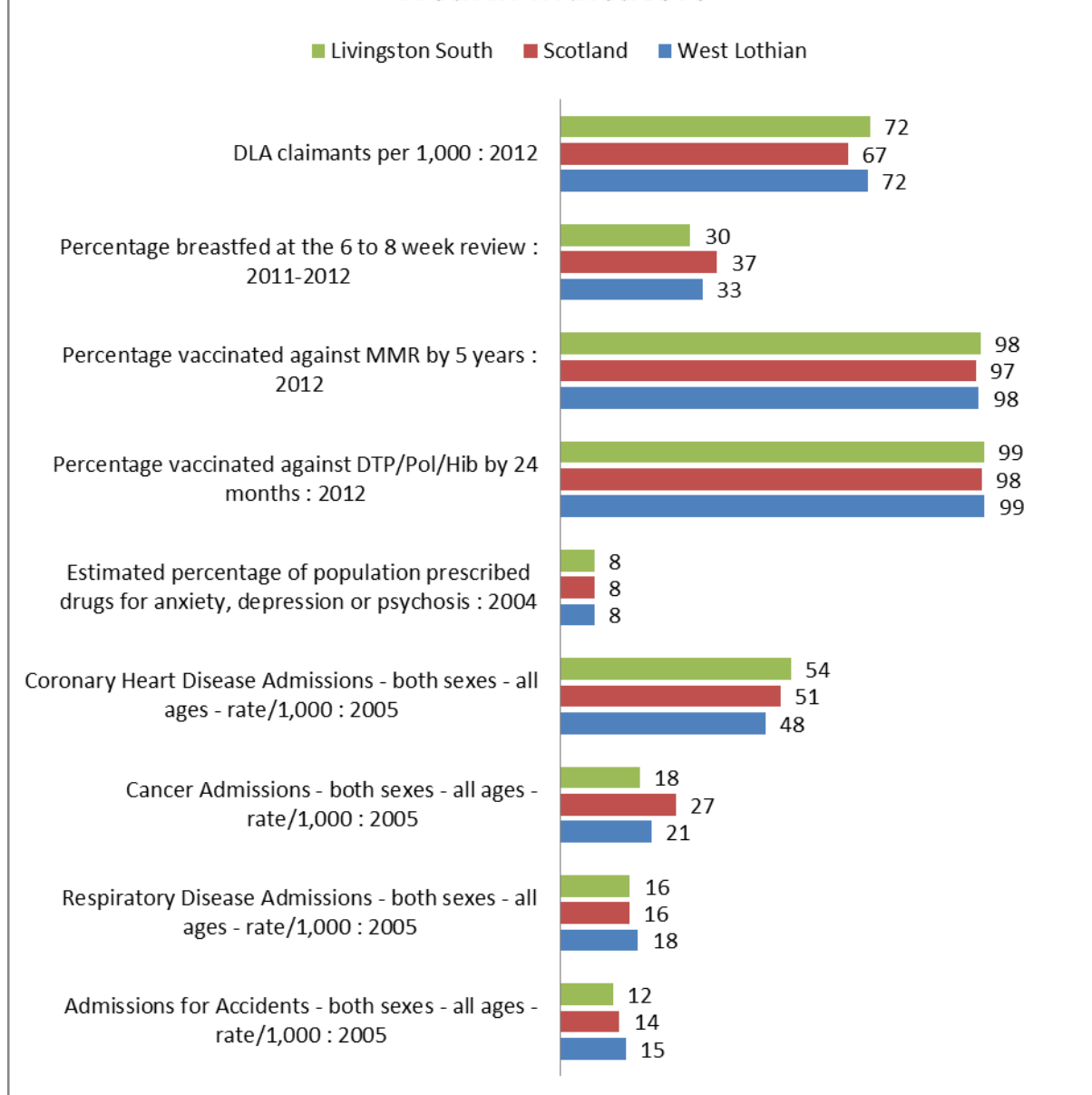
Livingston South is the largest in West Lothian with 24301 residents, 14.1% of the total population. There are 31 “datazones” in the ward – these are small areas with around 750 residents used to identify concentrations of multiple deprivation using indicators such as unemployment, income and health. Of the 20 datazones in the ward 6 (30%) are in the worst 20% in West Lothian, slightly lower than the average.

The proportion of the population who are of “working age” is 64% slightly higher than the averages for both West Lothian and Scotland (63%). Livingston South ward has an 11% rate of employment deprivation, slightly lower than the averages for both West Lothian and Scotland (13%). Thirteen per cent of the ward population are “income deprived” again slightly lower than the levels for both West Lothian and Scotland.

There is a significantly higher proportion of homes in the lowest council tax band than in both West Lothian and Scotland while the number in the highest council tax band is significantly lower than the averages for West Lothian and Scotland. There is a relatively high density of housing reflecting the urban nature of the ward compared to wider West Lothian and Scotland.

[Back to Top](#)

## Health Indicators



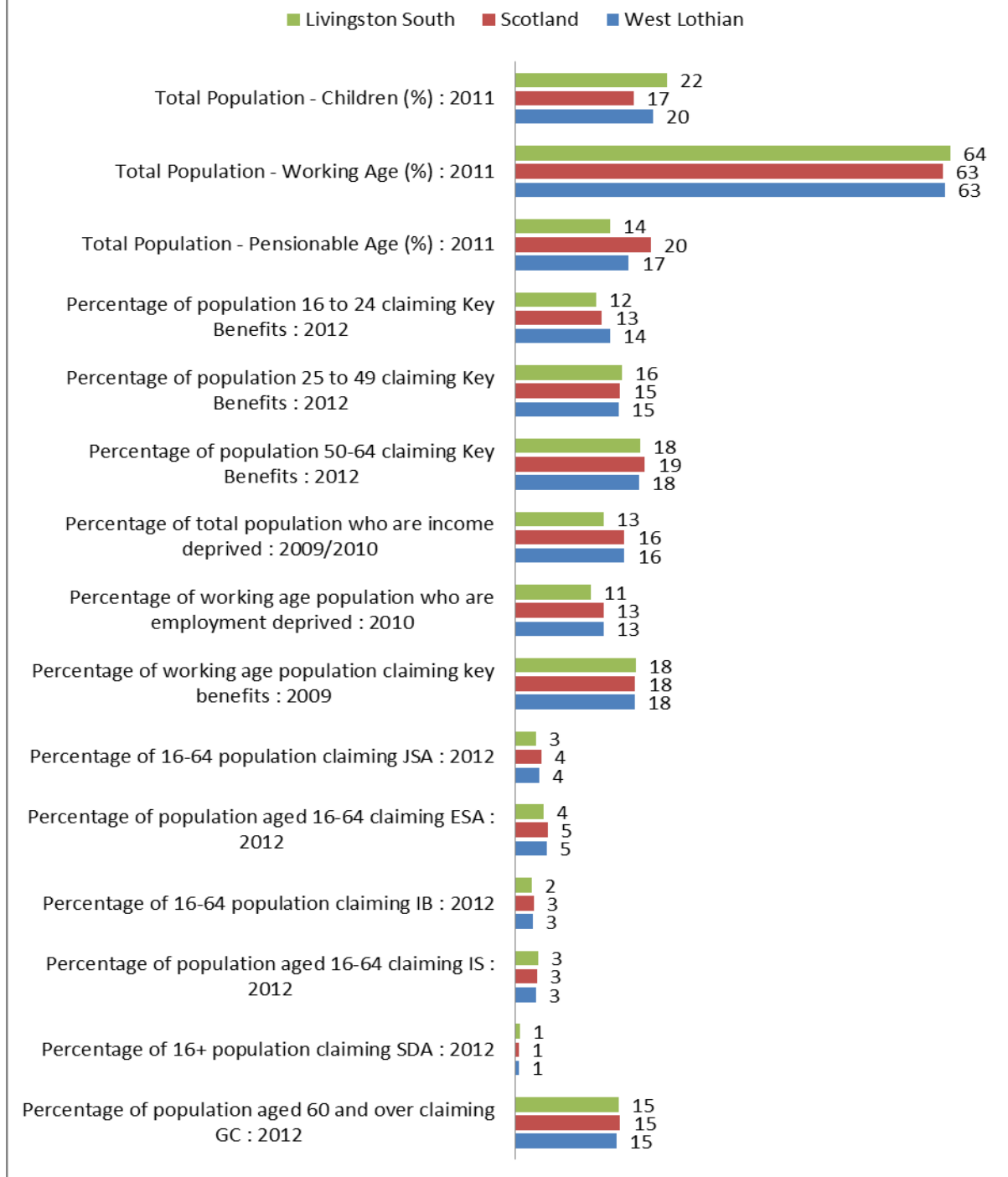
The above indicators allow a comparison between key health indicators in the ward against West Lothian and Scotland. They show that Livingston South has a significantly higher proportion of people claiming Disability Living Allowance than is the case for West Lothian but is the same as the level for Scotland. There are a significantly lower proportion of babies being breast fed at the 6-8 week review than is the case for West Lothian and Scotland.

Hospital Admissions are generally lower than the West Lothian and Scotland average. There is one exception to this observation. There is a significantly higher number of people admitted to hospital as a result of Coronary Heart Disease than is evidenced across West Lothian and Scotland as a whole.

The health indicators in the table above are taken from the Scottish Neighbourhood Statistics site at: - <http://www.sns.gov.uk>

[Back to Top](#)

## Population and Benefit Indicators



The above indicators allow for a comparison between key populations and benefit claimants in the ward against West Lothian and Scotland. They show that Livingston South has a younger population profile than West Lothian with a slightly higher proportion of both children and working age adults and a lower proportion of those of pensionable age.

The ward has a similar proportion of working age benefit claimants to West Lothian and Scotland all scoring 18%. Similarly the proportion of residents aged 60+ claiming Guaranteed Credits, which is a passport benefit for those on low incomes, is the same as recorded for both West Lothian and Scotland. The proportions of people who are income deprived and employment deprived are lower than the scores for West Lothian and Scotland.

The population and benefit indicators in the table above are taken from the Scottish Neighbourhood Statistics site at: - <http://www.sns.gov.uk>

[Back to Top](#)

## Livingston South Ward – Datazones in the Worst 20% in West Lothian

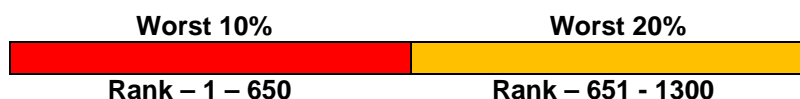
There are 31 “datazones” in the Livingston South ward and 6 of these (19%) are in the worst 20% in West Lothian, slightly lower than the average. More information on the ward itself is available on the following

link: <http://www.sns.gov.uk/Reports/Report.aspx?ReportId=2&AreaTypeId=MW:Multi%20Member%20Wards&Areald=S13002825> (Please note that links may not work correctly the first time due to issues with the SNS website but will work on repeat click).

The table below shows the breakdown of how each datazone ranks for each domains of the Scottish Index of Multiple Deprivation. The figure gives the ranking for each domain/ datazone from the 6505 datazones there are in Scotland. The higher the number, the better the ranking and vice-versa. Those in the worst 10% and 20% are identified in the legend at the foot of the table.

In a West Lothian context, although SIMD measures multiple deprivations most areas do not have high scores across all deprivation domains – usually only experiencing high scores in 2 or 3 at most. As described above in respect of individual datazones, Income, Employment, Health and Education seem to be the main drivers of deprivation in West Lothian. Crime is a factor insofar as the higher scoring datazones tend to have town centres where there is presumably more reported crime. Neither of the Housing or Access Domains seem to have a bearing or influence the overall deprivation scores.

SIMD Domain							
Data Zone	INCOME	EMPLOYMENT	HEALTH	EDUCATION	GEOGRAPHIC ACCESS	HOUSING	CRIME
Livingston Dedridge Kenilworth Rise - S01006355	744	1473	544	1400	5559	2368	1374
Livingston Dedridge Durward Rise S01006358	1204	1563	407	1873	3894	3724	1068
Livingston Ladywell Banks North S01006420	1252	1530	471	692	2831	2965	1741
Livingston Ladywell Banks East S01006396	1189	1545	1176	462	5702	3365	1174
Livingston Ladywell Inveralmond S01006412	1575	1727	478	1051	4463	3742	3142
Livingston Ladywell Banks West - S01006394	1492	1506	613	1847	5135	3283	1263



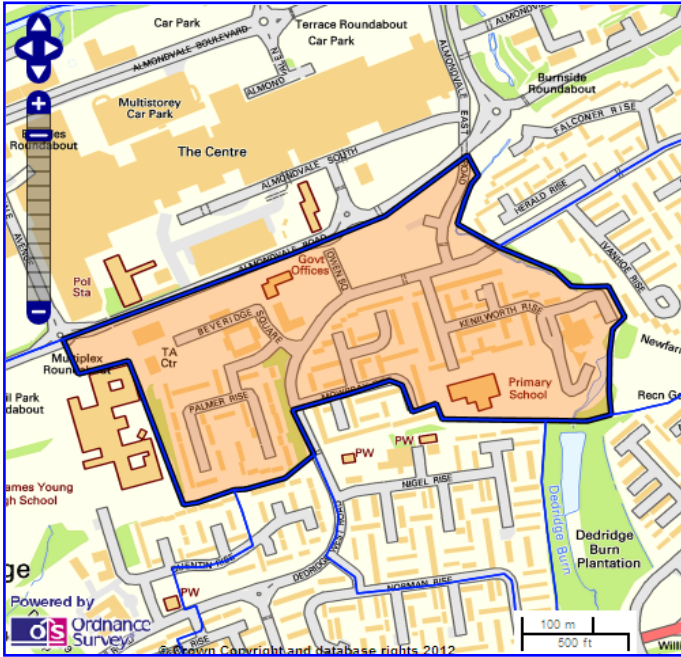
Unsurprisingly, these datazones tend to score low across most of the indicators as can be seen from the table above. In addition to the table, maps for each of these datazones have been provided on the following pages with links to the Scottish Neighbourhood Statistics site providing more detailed information.

[Back to Top](#)

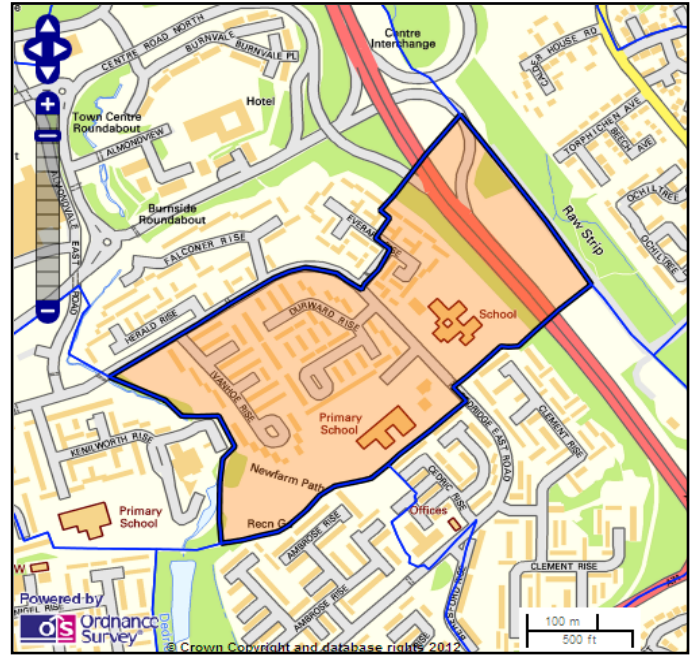
# Datazone Maps

The following datazones/maps below are those within the ward are those found in the lowest 20% in West Lothian. These maps show the streets/areas they cover. For more information on each, please [click on the map](#) of each datazone which, in turn, will open up its profile on the Scottish Neighbourhood Statistics website. *(Please note that links may not work correctly the first time due to issues with the SNS website but will work on repeat click).*

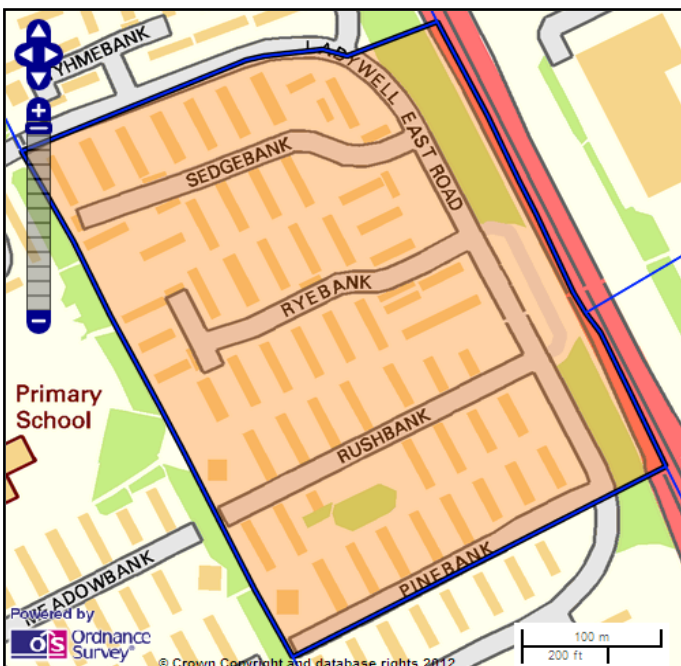
**Livingston Dedridge (S01006355)**  
**Kenilworth Rise**



**Livingston Dedridge (S01006358)**  
**Durward Rise**



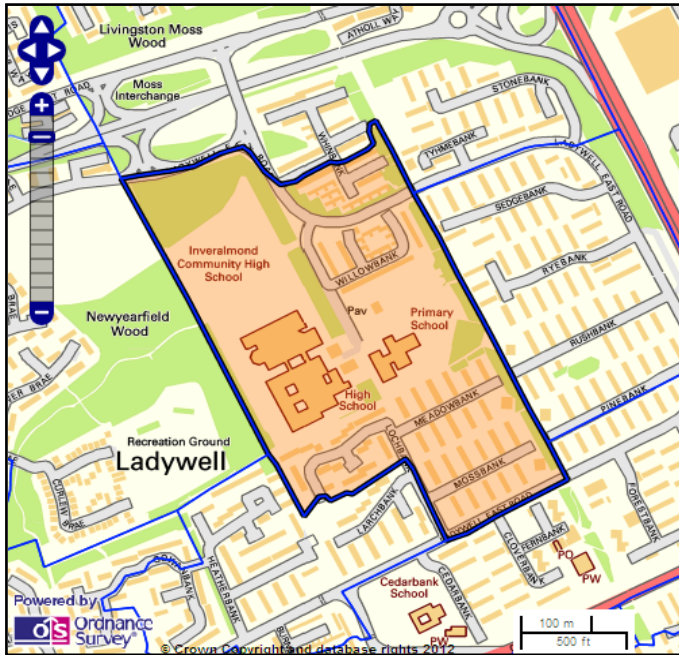
**Livingston Ladywell (S01006420)**  
**Banks North**



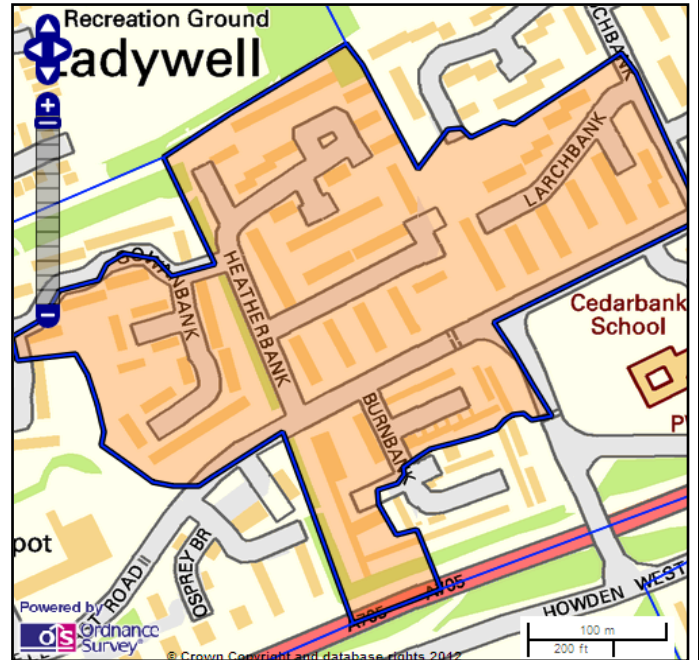
**Livingston Ladywell (S01006396)**  
**Banks East**



**Livingston Ladywell (S01006412)  
Inveralmond**



**Livingston Ladywell (S01006394)  
Banks West**



[Back to Top](#)

## Census 2011

There is an abundance of data available from the 2011 Census. For information on the types of data available please visit the following link: <http://www.scotlandscensus.gov.uk/>

If you would like specific information for an area, please contact Andrew Cotton, Economic Development Officer with the council on 01506 283080 or email: [Andrew.Cotton@westlothian.gov.uk](mailto:Andrew.Cotton@westlothian.gov.uk)

[Back to Top](#)

### Banks West

# Employment/ Employability

## West Lothian Council School Leaver Destination Return 2013/14 (Initial Destination Percentages)

School	Total Leavers	Destination					% Pos*	Unemployed
		Higher Education	Further Education	Training	Employment			
Inveralmond Community High School	204	35.3%	29.4%	5.4%	23%	<b>93.6%</b>	6.4%	
The James Young High School	182	40.1%	26.9%	4.4%	18.7%	<b>92.9%</b>	7.1%	
St. Margaret's Academy	205	53.7%	21.5%	3.4%	15.1%	<b>94.6%</b>	5.4%	
<b>West Lothian</b>	1986	41.1%	26.4%	4.5%	19.4%	<b>93%</b>	6.8%	

\*Includes Voluntary Work and Activity Agreements

## Unemployment by Multi Member Ward as of May 2015

Multi Member Ward	Male JSA claimants	Female JSA claimants	Total JSA claimants	JSA claimant rate
	number	number	number	rate
Armadale and Blackridge	129	60	18	<b>1.9%</b>
Bathgate	190	82	27	<b>2.3%</b>
Broxburn, Uphall and Winchburgh	130	77	20	<b>1.7%</b>
East Livingston and East Calder	151	90	24	<b>1.8%</b>
Fauldhouse and the Breich Valley	129	77	20	1.9%
Linlithgow	58	30	88	<b>0.9%</b>
Livingston North	128	59	18	<b>1.3%</b>
<b>Livingston South</b>	<b>173</b>	<b>91</b>	<b>26</b>	<b>1.6%</b>
Whitburn and Blackburn	253	106	359	<b>2.3%</b>
<b>West Lothian</b>	<b>1,341</b>	<b>672</b>	<b>2,013</b>	<b>1.8%</b>

Use this link to get up to date information about employment and other economic facts about West Lothian: [http://www.westlothian.com/Home/wl\\_economy/facts\\_figures/](http://www.westlothian.com/Home/wl_economy/facts_figures/)

[Back to Top](#)

## Child Poverty

In the figures presented below, from End Child Poverty's 'Child Poverty Map of the UK', released in October 2014, children are classified as being in poverty if they live in families in receipt of out of work benefits or in receipt of in-work tax credits where their reported income is less than 60 per cent of median income. The measure is of income before housing costs, and therefore replicates the more modest, official estimate of how many children are in poverty, not taking account of the impact of high rent or mortgage payments.

Percentage of children in poverty, Oct-Dec 2013	BEFORE HOUSING COSTS	AFTER HOUSING COSTS
<b>Local Authority and wards</b>		
<b>West Lothian</b>	<b>13.27%</b>	<b>21.24%</b>
Linlithgow	6.80%	11.03%
Broxburn, Uphall and Winchburgh	11.89%	19.12%
Livingston North	14.97%	23.60%
<b>Livingston South</b>	<b>13.23%</b>	<b>21.26%</b>
East Livingston and East Calder	12.13%	19.62%
Fauldhouse and the Breich Valley	16.68%	26.32%
Whitburn and Blackburn	16.47%	26.24%
Bathgate	12.19%	19.60%
Armadale and Blackridge	14.42%	23.00%

More information is available in the report on the following link: [http://www.endchildpoverty.org.uk/images/ecp/Report\\_on\\_child\\_poverty\\_map\\_2014.pdf](http://www.endchildpoverty.org.uk/images/ecp/Report_on_child_poverty_map_2014.pdf)

[Back to Top](#)

## Useful Information and Links

**Community Regeneration Officer:** Laura Wilson  
Telephone Office: 01506 281085  
Mobile: 07500608575  
E-mail: [laura.wilson@westlothian.gov.uk](mailto:laura.wilson@westlothian.gov.uk)

### Ward Action Plan:

This plans shows what and how partners across the Livingston South ward will be working together to achieve over the coming year, what outcomes they are working towards and how they will measure progress against these.[the local ward plans will be available electronically soon at this web address [http://www.westlothian.gov.uk/media/6271/Livingston-South-Ward-Action-Plan-2013-15/pdf/LIVINGSTON\\_SOUTH\\_WARD\\_ACTION\\_PLAN\\_2013-15.pdf](http://www.westlothian.gov.uk/media/6271/Livingston-South-Ward-Action-Plan-2013-15/pdf/LIVINGSTON_SOUTH_WARD_ACTION_PLAN_2013-15.pdf)

### Scottish Fire and Rescue

The Local Fire and Rescue Plan for West Lothian: [http://www.firescotland.gov.uk/media/610232/sfrs\\_local\\_plan\\_west\\_lothian\\_v1.pdf](http://www.firescotland.gov.uk/media/610232/sfrs_local_plan_west_lothian_v1.pdf)

This plan is the mechanism through which the aims of the SFRS's Strategic Plan 2013 – 2016 are delivered to meet the agreed needs of the West Lothian communities . <http://www.firescotland.gov.uk/>

### Police Scotland

Ward profiles have been produced outlining the service priorities for each ward. Information on Livingston South is as follows: <http://www.scotland.police.uk/your-community/the-lothians-and-scottish-borders/west-lothian/livingston-south/>

### Local Development Plan

The Local Development Plan provides a planning framework for delivering the planning vision for West Lothian, against which planning applications are assessed. The following web site contains information within each of the sections which is relevant to the ward: <http://www.westlothian.gov.uk/LDP>

### Annual Ward Employability Report

The multi-agency West Lothian Working Together Group produced a report for 2013/4 regarding the employability support provided by various agencies and the impact it is having on employability in the ward. <http://coins.westlothian.gov.uk/coins/submissiondocuments.asp?submissionid=23085>

### COINS

COINS is the site where West Lothian Council keeps its committee reports and papers. These are public documents and can be viewed here: <http://coins.westlothian.gov.uk/coins/>

### Community News

The council web site hosts a page dedicated to local news. You can find out what is happening in Livingston South here:- <http://www.westlothian.gov.uk/livingstonsouthnews>

## Funding Newsletter

Community Regeneration produces a regular funding newsletter which outlines the funds accessible to voluntary organisations and groups in West Lothian. The latest version is available on the following link <http://www.westlothian.gov.uk/article/1980/Community-Grants>

## Community Councils

Community Councils are directly elected bodies which find out and express the views of the community to local authorities and other public bodies, and take action which they feel is in the interests of its community. There are five community councils in the ward – Bellsquarry, Dedridge, Ladywell, Livingston Village and Murieston. More information and contact details at:-: <http://www.westlothian.gov.uk/communitycouncils> . For further information you can contact the council's Community Council Liaison Officer at the following address [lorraine.mcgrorty@westlothian.gov.uk](mailto:lorraine.mcgrorty@westlothian.gov.uk)

[Back to Top](#)