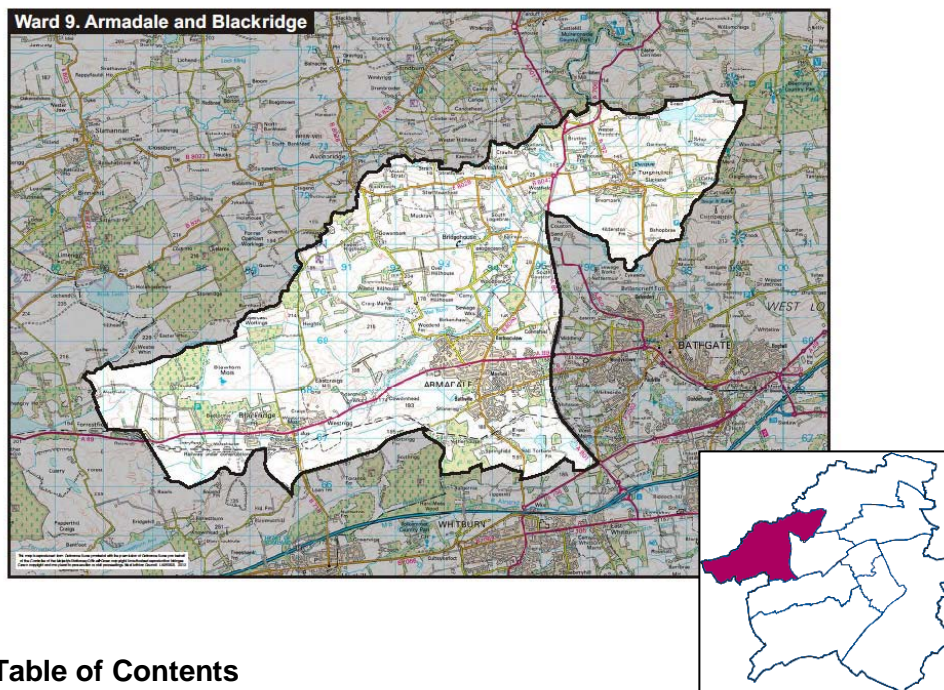


# Armadale and Blackridge Ward Profile

Community Regeneration Officer: Vacant

April 2015



## Table of Contents




- [Introduction](#)
- [West Lothian Information](#)
- [Scottish Index of Multiple Deprivation – West Lothian](#)
  - [Data Zones in the Most Deprived 20% in Scotland and West Lothian](#)
- **Key Statistics**
  - [Key Statistics](#)
  - [Health](#)
  - [Population and Benefit](#)
  - [Fauldhouse and The Breich Valley – Datazones in the Lowest 20% in West Lothian](#)
- [Datezone Maps](#)
- [Census 2011](#)
- [Employment / Employability](#)
- [Child Poverty](#)
- [Useful Information and Links](#)

# Introduction

Ward Profiles have been created for all nine wards in West Lothian, collating relevant data from national and local sources. The purpose of these profiles is to provide up to date data and key information consistently across West Lothian to assist groups/decision-makers when setting priorities for an area or to inform and evidence need.

## Elected Representatives

The Armadale and Blackridge ward has three councillors, all of whom are elected on a proportional voting system to represent the whole ward. The three councillors meet regularly as a Local Area Committee. The Chair is Jim Dixon. Those elected in May 2012 for five years are:-

		
Stuart Borrowman (Independent)	Jim Dixon (Scottish Labour Party)	Sarah King (Scottish National Party)

The ward is located within the Linlithgow constituency for the Scottish Parliament which is represented by Fiona Hyslop MSP. There are also seven list MSPs for the Lothians whose details are on the Scottish Parliament website.

The ward is located in the Linlithgow and East Falkirk constituency for the Westminster Parliament. The constituency is represented by Michael Connarty MP.

There are six Members of the European Parliament who represent the whole of Scotland. Information on these is available on the European Parliament website [www.europarl.org.uk](http://www.europarl.org.uk)

## Main Settlements

This ward is the smallest in West Lothian with a total population of 15,323 (based on Mid-2013 GRO Population Estimates). Armadale is the largest settlement in the ward with a population of 11,072 (Mid-2013 GRO Population Estimates) and has seen significant increases arising from new housing developments in the last decade. Blackridge, including Westrigg, has a population of 1,926 and has seen a similar increase in population, as has Westfield, whereas Torphichen's population has decreased to 596 over the same period. Armadale is one of West Lothian Core Development areas which will see continued house building programmes to the south of the town over the coming years. There have also recently been significant investments in the new Armadale Academy and sports facilities, and Armadale Community Centre which also encompasses the new library.

Armadale Academy's catchment area serves Armadale, Blackridge and Westfield/Bridgehouse (as well as the west of Bathgate) whilst young people in Torphichen will attend Linlithgow Academy. St. Kentigern's Academy also covers all parts of the ward. Armadale railway station was reopened on 4 March 2011 as part of the new Airdrie-Bathgate Rail link giving a line from Edinburgh to Glasgow and on to Helensburgh and Milngavie.

The demographics of the ward are as follows:

Age group	% in ward	% in WL
Under 16	20.2	19.88
Working age	61.74	63.34
Older people	18.06	16.78

Source: Scottish Neighbourhood Statistics, [www.sns.gov.uk](http://www.sns.gov.uk)

[Back to Top](#)

## West Lothian Information

West Lothian information has been provided in each profile to provide a wider context of the profile for that ward.

### West Lothian Single Outcome Agreement


List of Outcomes agreed by the Community Planning Partnership in February 2013 which form the Single Outcome Agreement:

- Our children have the best start in life and are ready to succeed
- We are better educated and have access to increased and better quality learning and employment opportunities
- Our economy is diverse and dynamic, and West Lothian is an attractive place for doing business
- We live in resilient, cohesive and safe communities
- People most at risk are protected and supported to achieve improved life chances
- Older people are able to live independently in the community with an improved quality of life
- We live longer, healthier lives and have reduced health inequalities.
- We make the most efficient and effective use of resources by minimising our impact on the built and natural environment.

More information is available on the following link: <http://www.westlothian.gov.uk/communityplanning>

### West Lothian Council Priorities

Following the Delivering Better Outcomes consultation in 2012, West Lothian Council have set priorities as detailed in the following table.

 <b>Analysis summary:</b>	Priority	Consultation: Average Ranking
The responses were analysed to evaluate if the council had the right priorities for West Lothian and then to rank the importance of priorities.	Ensuring children have the best possible start in life	1
The top rankings were for priorities concerned with early years, school children, older people and those affected by joblessness and poverty. This confirms the community's support for the council's approach to target services and resources to those most in need.	Improving job opportunities, especially for young people	2
	Improving qualifications and ensuring as many school leavers as possible get a job or go into further/higher education or training	3
	Improving the quality of life for older people	4
	Minimising the effects of poverty and deprivation and promoting equality	5
	Reducing crime and making our communities safer	6
	Improving people's health	7
	Looking after the environment	8

*Figure 1: Priority Analysis from Delivering Better Outcomes Consultation 2012*

More information is available on the following link: <http://www.westlothian.gov.uk/article/1952/Corporate-Plan>

## **West Lothian Regeneration Framework**

Within the Regeneration Framework are the following five themes:

- Employability and Employment;
- Early Years and Family Learning;
- Health and Wellbeing;
- Economic Development; and
- Community Capacity and Cohesion

More information is available on the following link: <http://www.westlothian.gov.uk/communityregeneration>

[Back to Top](#)

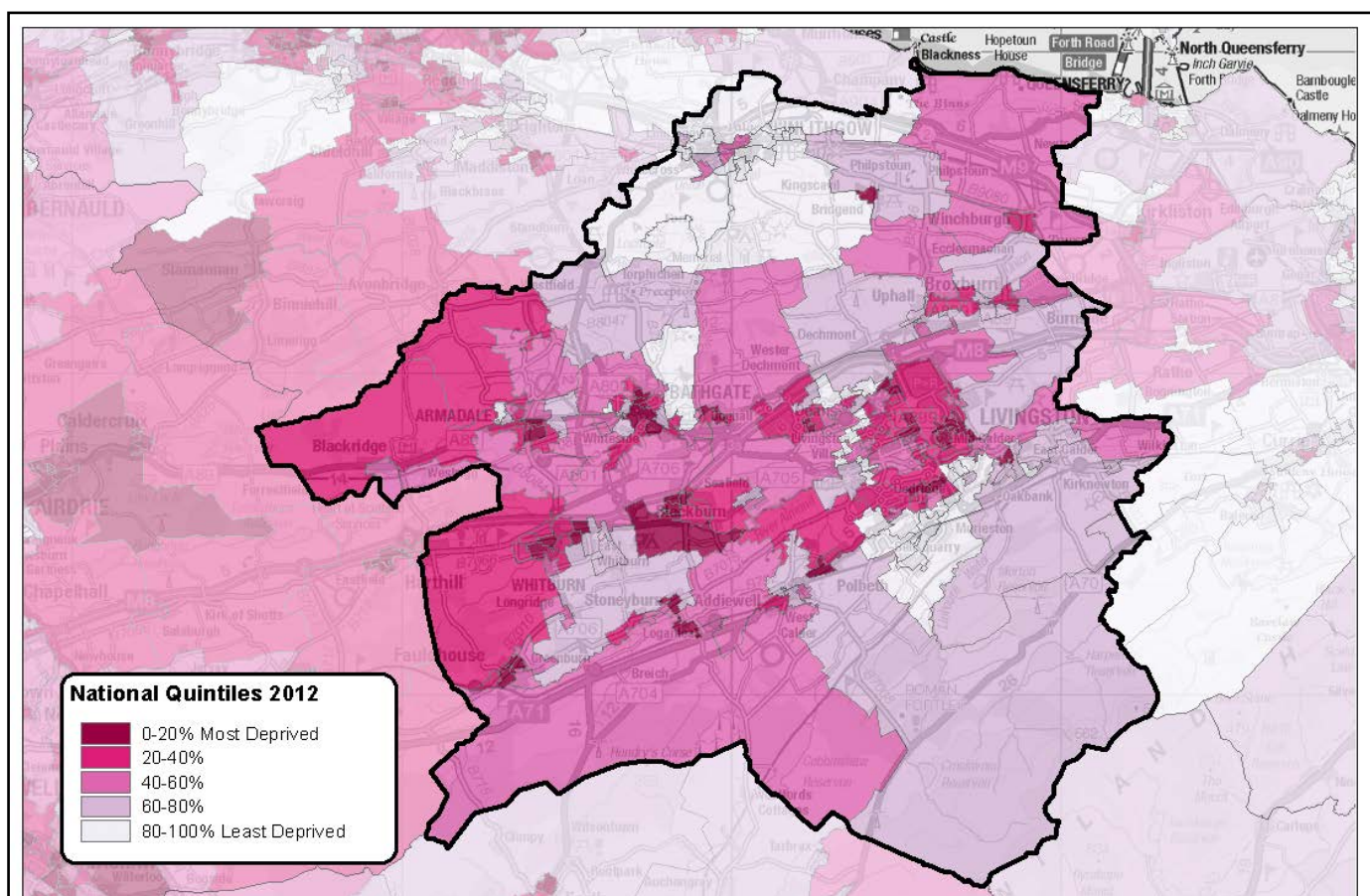


## Scottish Index of Multiple Deprivation - West Lothian

The Scottish Index of Multiple Deprivation (SIMD) identifies small area concentrations of multiple deprivation across all of Scotland in a consistent way.

The SIMD provides a *relative* measure of deprivation which means that the SIMD 'ranks' can be used to compare data zones by providing a relative ranking. The SIMD has been used to identify Scotland's most deprived small areas on the overall index and each individual 'domain' (i.e. crime, income etc).

The above map shows what areas in West Lothian are ranked the lowest in comparison to Scotland—the darker the purple, the higher the levels of deprivation. Although West Lothian has very few data zones in the most deprived decile, most of this local authority's data zones are found in the second, third, and fourth deciles (towards the more deprived end of the distribution) in SIMD 2012. This is similar to the pattern observed for SIMD 2009.



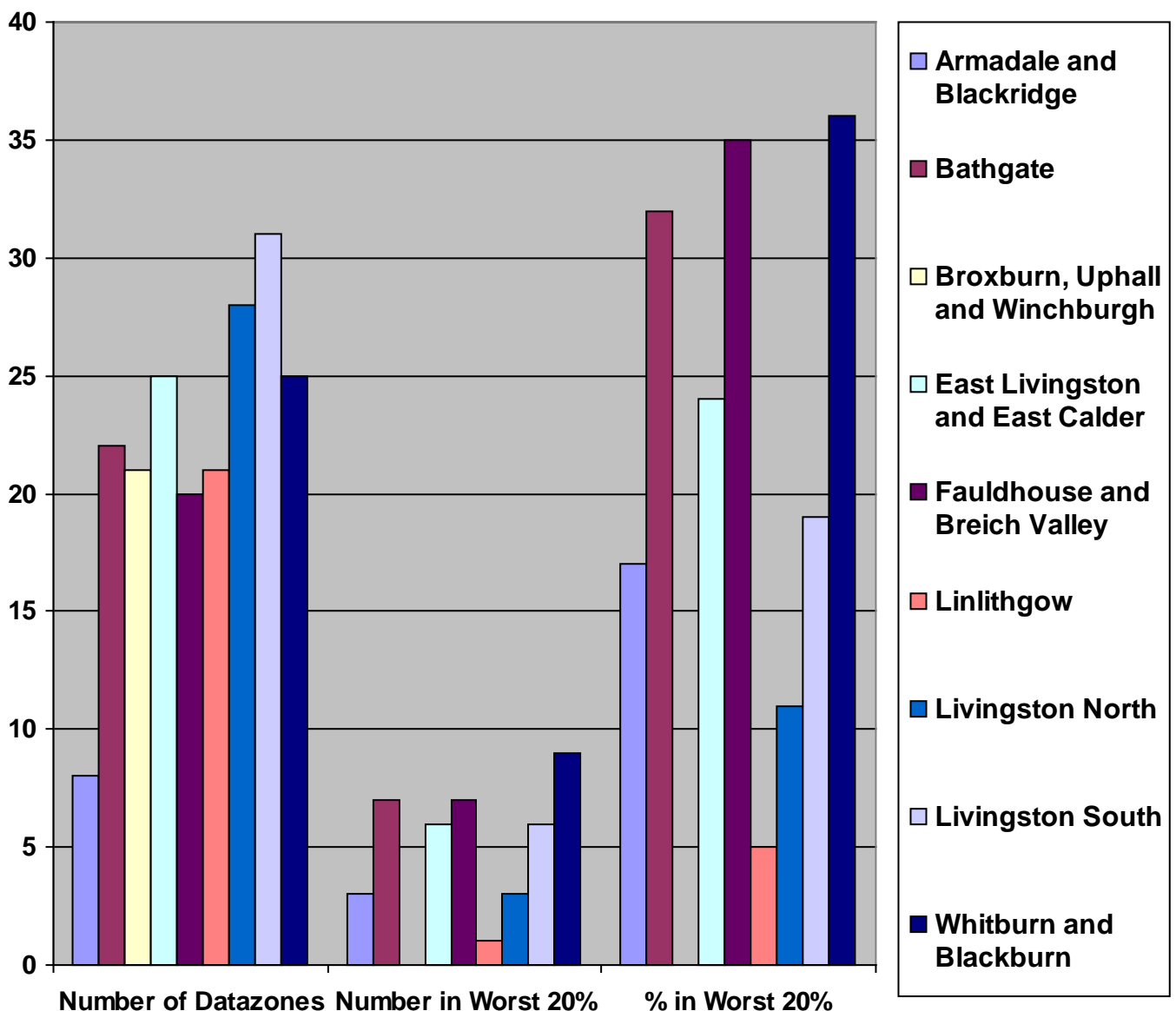
Reproduced by permission of Ordnance Survey on behalf of HMSO. © Crown copyright and database right (2012). All rights reserved. Ordnance Survey Licence number 100024655.

[Back to Top](#)

## Change in Distribution and Number of Data Zones in Most Deprived 20% Category in Scotland

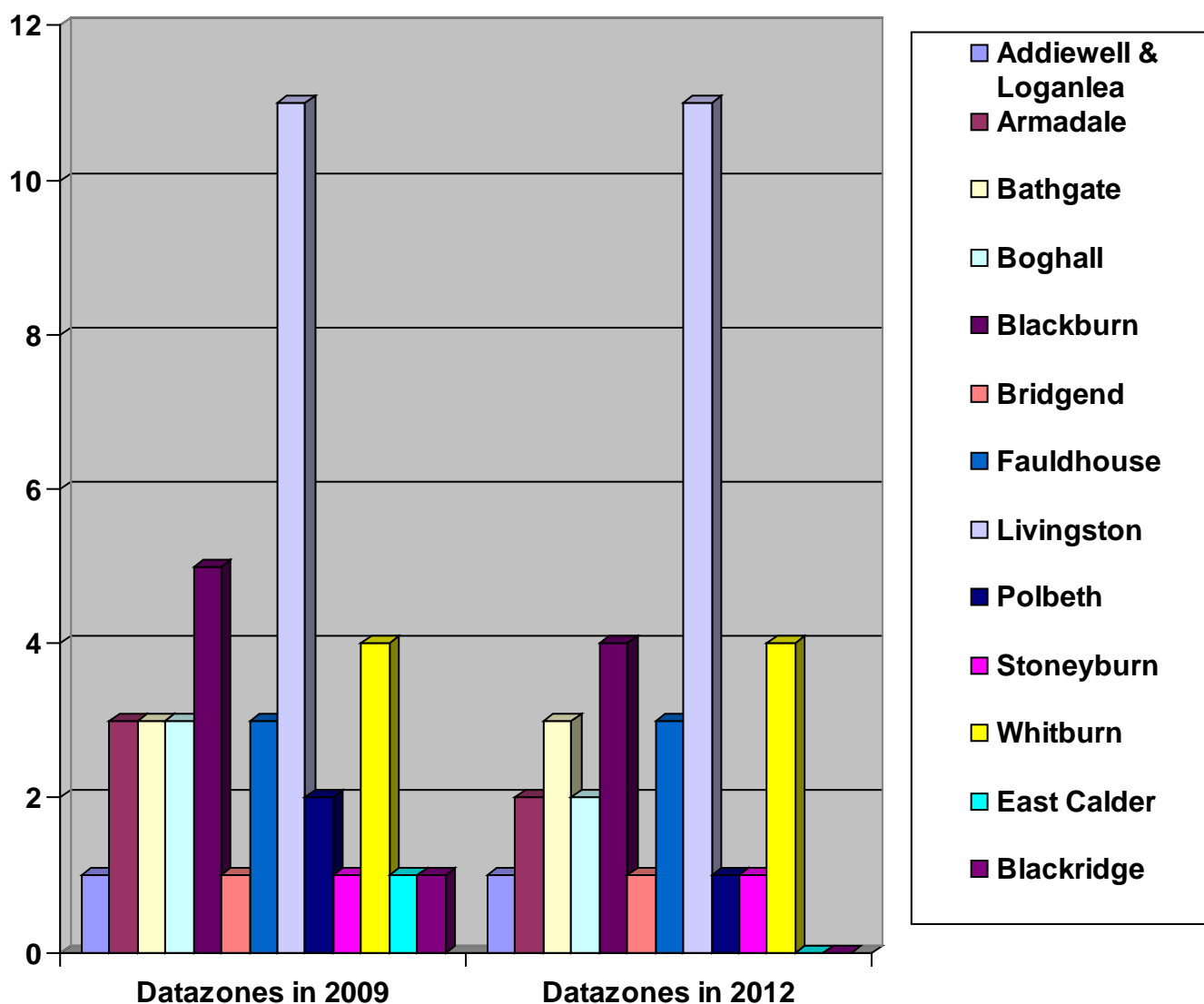
The table below shows a comparison of data zones that are in the lowest 20% in Scotland within the West Lothian multi-member wards.

Ward Name	Number of Data zones	Number in Worst 20%	% in Worst 20%
<b>Armadale and Blackridge</b>	<b>18</b>	<b>3</b>	<b>17%</b>
Bathgate	22	7	32%
Broxburn, Uphall and Winchburgh	21	0	0
East Livingston and East Calder	25	6	24%
Fauldhouse and Breich Valley	20	6	30%
Linlithgow	21	1	5%
Livingston North	28	3	11%
Livingston South	31	6	19%
Whitburn and Blackburn	25	9	36%



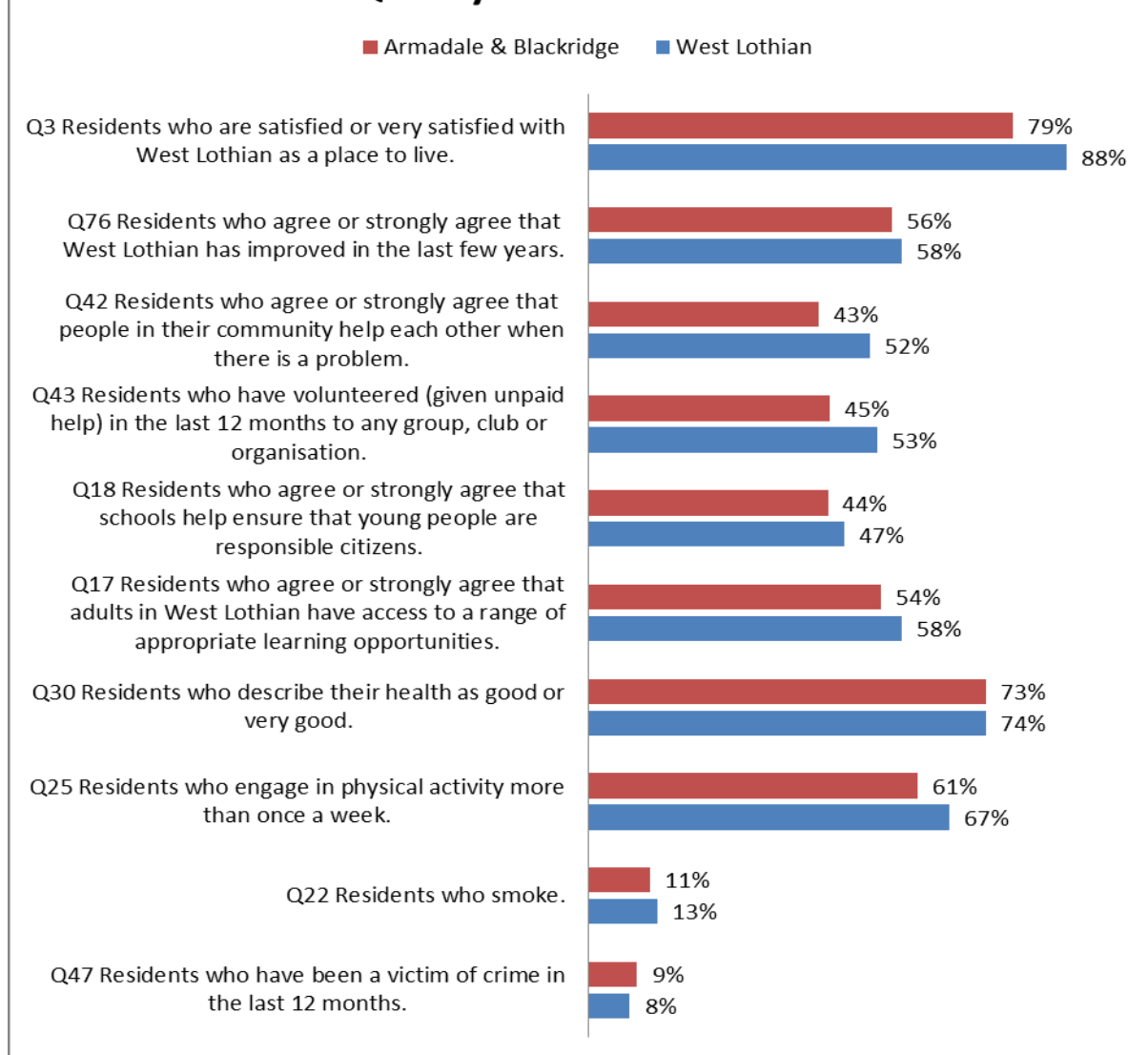
The table below shows a comparison of data zones in West Lothian in the lowest ranking 20% of all data zones in Scotland and shows how settlements in the Blackridge and Armadale ward compares with settlements of other wards.

Town/Village	Datazones in 2009	Datazones in 2012
Addiewell & Loganlea	1	1
<b>Armadale</b>	<b>3</b>	<b>2</b>
Bathgate	3	3
Boghall	3	2
Blackburn	5	4
Bridgend	1	1
Fauldhouse	3	3
Livingston	11	11
Polbeth	2	1
Stoneyburn	1	1
Whitburn	4	4
East Calder	1	0
<b>Blackridge</b>	<b>1</b>	<b>0</b>
<b>TOTAL WEST LOTHIAN</b>	<b>39</b>	<b>33</b>



[Back to Top](#)

## Quality of Life Indicators



The sixth West Lothian Quality of Life Survey for the Community Planning Partnership (CPP) was carried out in 2013 through the Citizens Panel. The Panel is structured to be completely representative of the West Lothian population, and representative at a multi member ward level. Panel members completed the survey in 2013 which was published in 2014.

A range of questions across a variety of subjects gave the CPP useful information about people's perceptions and experience of living in West Lothian. The CPP will use this information to plan, direct and prioritise services over the coming years. A sample of questions and results for West Lothian and the Armadale and Blackridge ward are shown in the table above.

The levels of satisfaction with West Lothian as a place to live are very strong, increasing by 1% between surveys completed in 2010 ( 87%) and 2013 (88%). In the Armadale and Blackridge ward however the level is significantly lower at 79%.

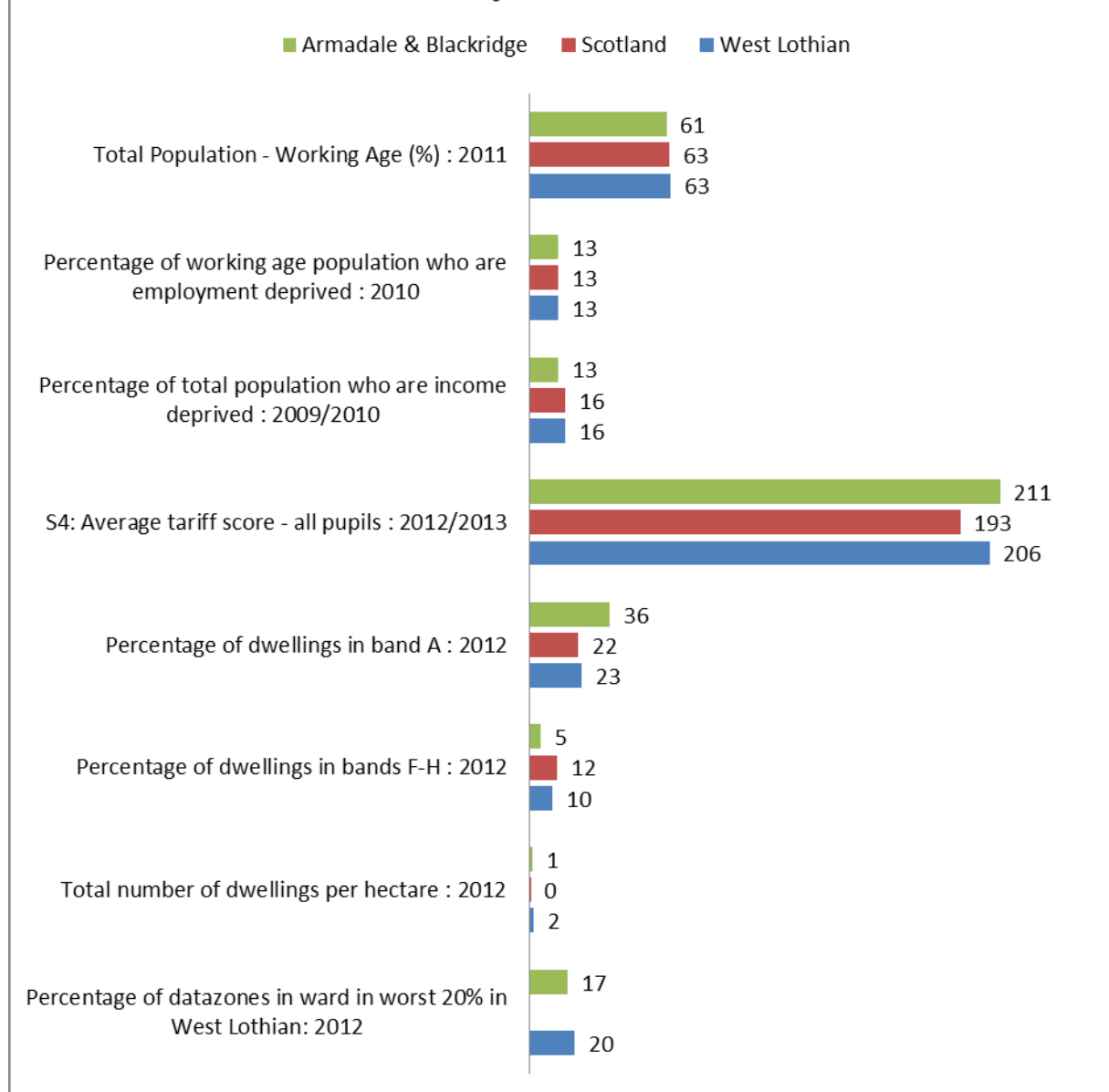
This sets the scene for the Armadale and Blackridge ward with several indicators having levels below the figure for West Lothian. Notable are the low levels of people communicating with their neighbours, the number of residents who think that they have enough access to appropriate learning opportunities and, the number of people that reported being involved in physical exercise more than once per week.

The Summary of Key Findings and Commentary on the West Lothian Citizens' Panel Quality of Life Survey 2010 Research Report is at [http :- http://www.westlothian.gov.uk/media/3698/Quality-of-life-2013---MMW-Results/pdf/Quality\\_of\\_Life\\_Survey\\_-\\_MMW\\_Summaries\\_v1\\_210214.pdf](http://www.westlothian.gov.uk/media/3698/Quality-of-life-2013---MMW-Results/pdf/Quality_of_Life_Survey_-_MMW_Summaries_v1_210214.pdf)

[Back to Top](#)



## Key Statistics



The table above are taken from the Scottish Neighbourhood Statistics Area Profile site at:-

<http://www.sns.gov.uk/Reports/Report.aspx?ReportId=2&AreaTypeId=MW:Multi%20Member%20Wards&AreaId=S13002828>

Armadale and Blackridge is the smallest ward in West Lothian with 15,323 residents. There are 18 “datazones” in the ward – these are small areas with around 750 residents used to identify concentrations of multiple deprivation using indicators such as unemployment, income and health. Of the 18 datazones in the Armadale and Blackridge ward 3 (17%) are in the worst 20% in West Lothian, slightly lower than the average.

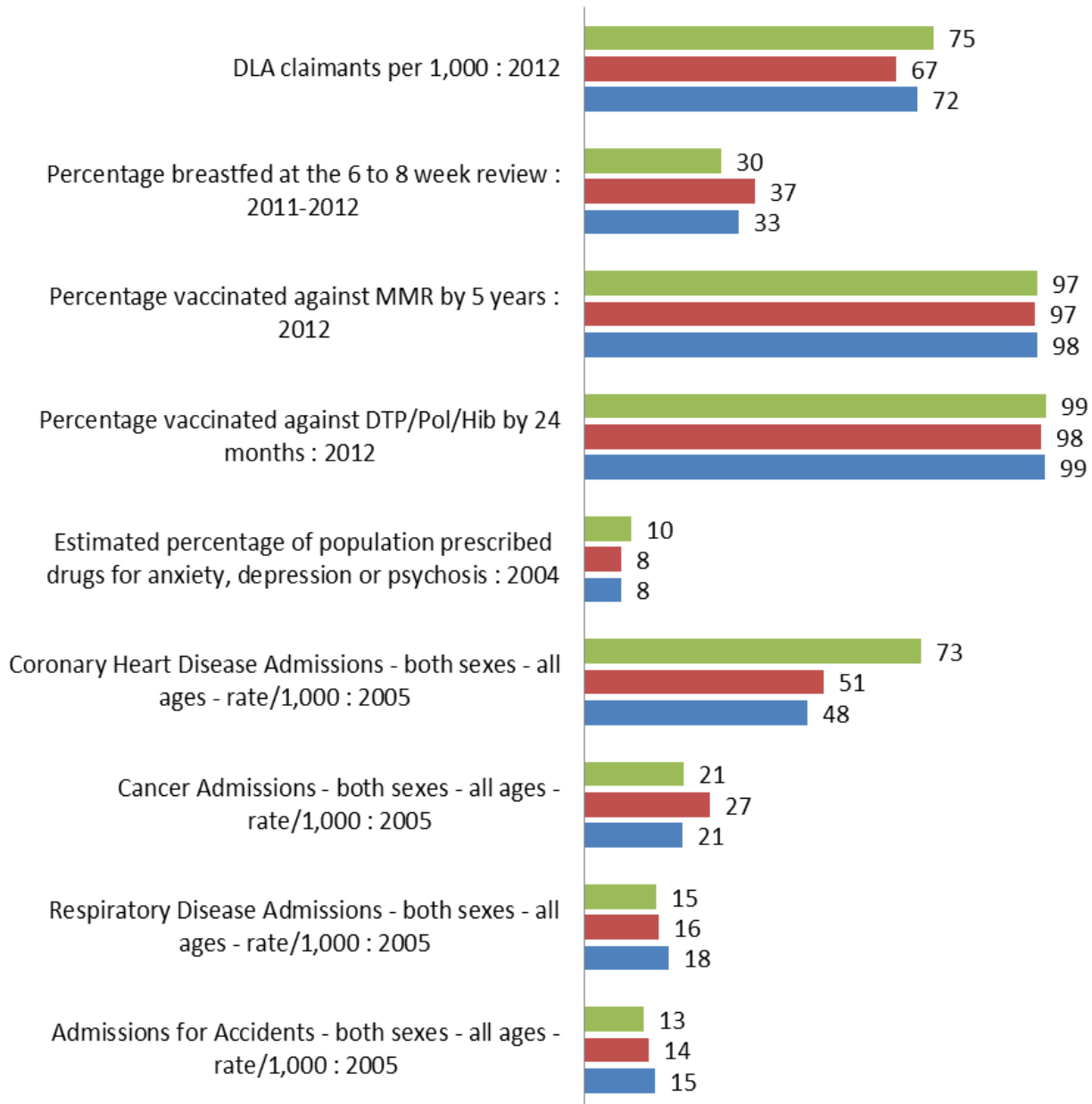
The proportion of the population who are of “working age” is 61% and very slightly lower than the averages of 63% for both West Lothian and Scotland. Armadale and Blackridge ward has a 13% rate of employment deprivation, similar to the averages for both West Lothian and Scotland. The ward has a 13% level of residents who are income deprived, lower than the averages for West Lothian and Scotland.

There is a higher proportion of homes in the lowest council tax band than in both West Lothian and Scotland while the number in the highest council tax bands is considerably lower than the averages for West Lothian and Scotland. There is a lower density of housing in Armadale and Blackridge ward in contrast to West Lothian as a whole. The ward is however more densely developed than the Scottish average.

[Back to Top](#)

## Health Indicators

■ Armadale & Blackridge ■ Scotland ■ West Lothian



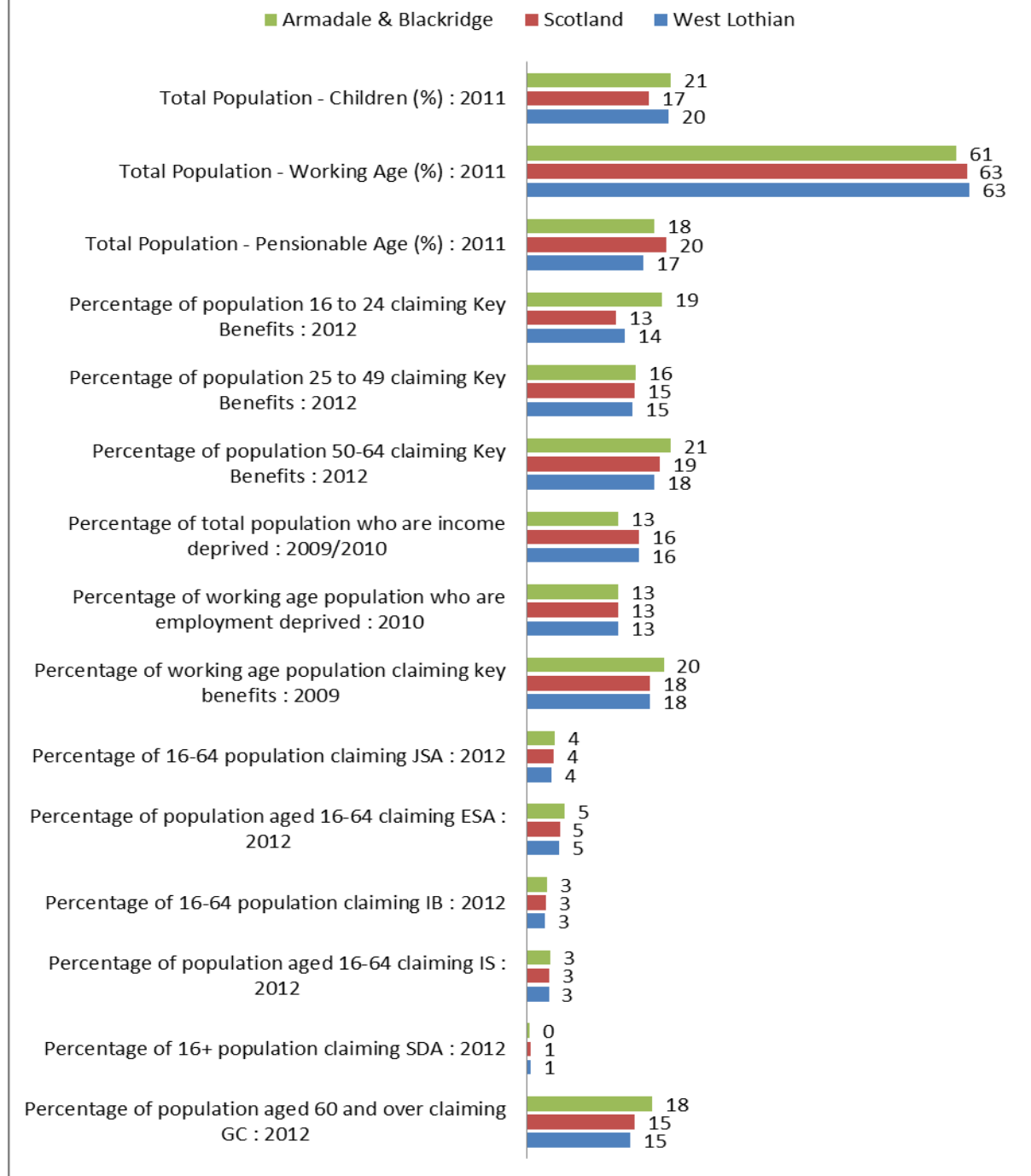
The above indicators allow a comparison between key health indicators in the ward against West Lothian and Scotland. They show that Armadale and Blackridge has a significantly higher proportion of people claiming Disability Living Allowance and a significantly lower proportion of babies being breast fed at the 6-8 week review than is the case for West Lothian and Scotland. Levels for vaccination are consistently high and equal or exceed levels recorded across West Lothian and Scotland.

Hospital Admissions are similar or lower than those recorded for West Lothian and Scotland with one significant exception. There is a significantly higher number of people, both male and female, admitted to hospital as a result of Coronary Heart Disease than is evidenced across West Lothian and Scotland as a whole.

The health indicators in the table above are taken from the Scottish Neighbourhood Statistics site at: - <http://www.sns.gov.uk>

[Back to Top](#)

## Population and Benefit Indicators



The above indicators allow for a comparison between key populations and benefit claimants in the ward against West Lothian and Scotland. They show that Armadale and Blackridge has a young population profile than West Lothian with a slightly higher than average proportion of children, fewer working age adults and a slightly lower proportion of those of pensionable age.

The ward has a higher proportion of working age benefit claimants with 20% against 18% for both West Lothian and Scotland, and a similarly high proportion of those aged 60+ claiming Guaranteed Credits which is a passport benefit for those on low incomes. The proportion of people who are income deprived is lower than the average for West Lothian and Scotland while the proportion of employment deprived is similar to averages for West Lothian and Scotland.

The population and benefit indicators in the table above are taken from the Scottish Neighbourhood Statistics site at: - <http://www.sns.gov.uk>

[Back to Top](#)

## Armadale and Blackridge Ward – Datazones in The Worst 20% in West Lothian

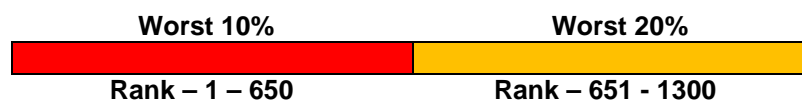
There are 18 “data zones” in the Armadale and Blackridge ward and 3 of these (16%) are in the worst 20% in West Lothian, significantly higher than the average. More information on the ward itself is available on the following

link: <http://www.sns.gov.uk/Reports/Report.aspx?ReportId=2&AreaTypeId=MW:Multi%20Member%20Wards&Areald=S13002828> (Please note that links may not work correctly the first time due to issues with the SNS website but will work on repeat click).

The table below shows the breakdown of how each data zone ranks for each domains of the Scottish Index of Multiple Deprivation. The figure gives the ranking for each domain/ data zone from the 6505 data zones there are in Scotland. The higher the number, the better the ranking and vice-versa. Those in the worst 10% and 20% are identified in the legend at the foot of the table.

In a West Lothian context, although SIMD measures multiple deprivations most areas do not have high scores across all deprivation domains – usually only experiencing high scores in 2 or 3 at most. As described above in respect of individual data zones, Income, Employment, Health and Education seem to be the main drivers of deprivation in West Lothian. Crime is a factor insofar as the higher scoring data zones tend to have town centres where there is presumably more reported crime. Neither of the Housing or Access Domains seem to have a bearing or influence the overall deprivation scores.

SIMD Domain							
Data Zone	INCOME	EMPLOYMENT	HEALTH	EDUCATION	GEOGRAPHIC ACCESS	HOUSING	CRIME
Armadale Mayfield (S01006393)	995	1196	592	903	4284	2546	888
Armadale (S01006410) South East / Greig Crescent	1058	638	767	2877	6120	4296	1387
Rural Westrigg (S01006392)	1196	1348	980	1734	3709	3079	1862



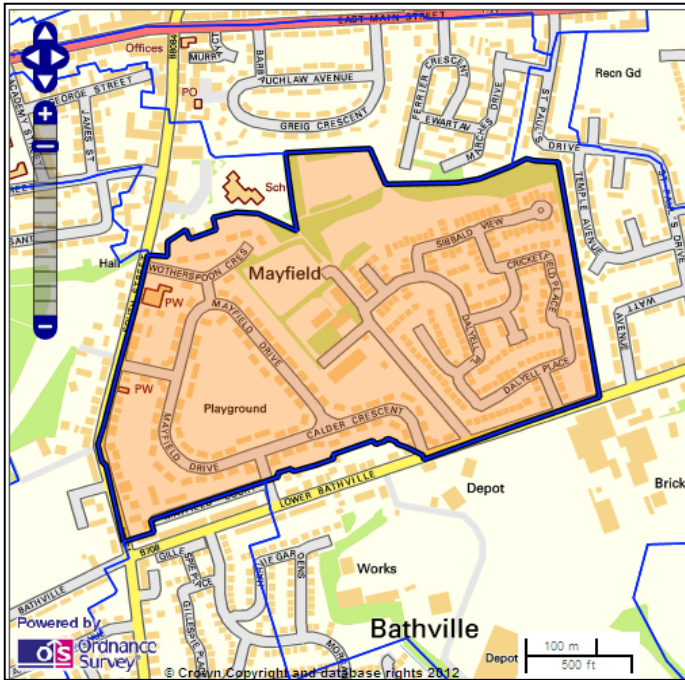
Unsurprisingly, these data zones tend to score low across most of the indicators as can be seen from the table above. In addition to the table, maps for each of these data zones have been provided on the following pages with links to the Scottish Neighbourhood Statistics site providing more detailed information.

[Back to Top](#)

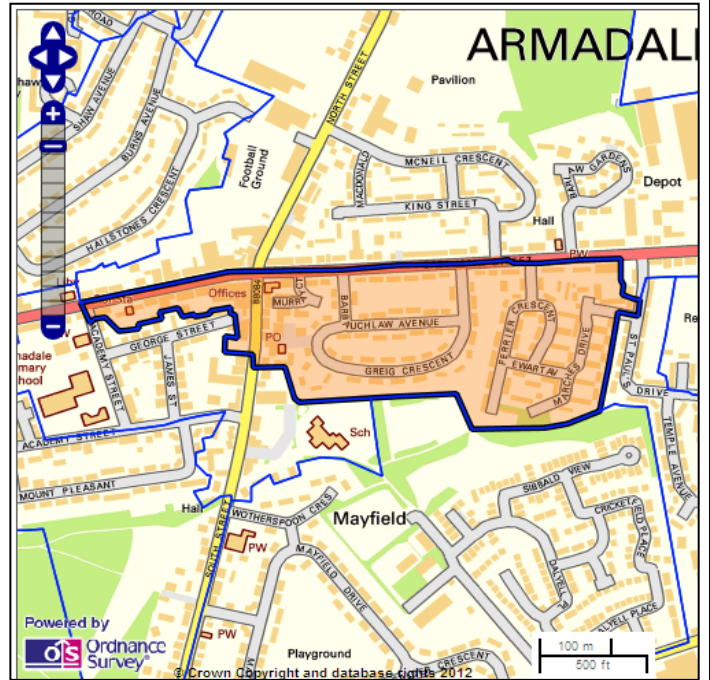
# Datazone Maps

The following data zones/maps below are those within the ward are those found in the lowest 20% in West Lothian. These maps show the streets/areas they cover. For more information on each, please [click on the map](#) of each data zone which, in turn, will open up its profile on the Scottish Neighbourhood Statistics website. *(Please note that links may not work correctly the first time due to issues with the SNS website but will work on repeat click).*

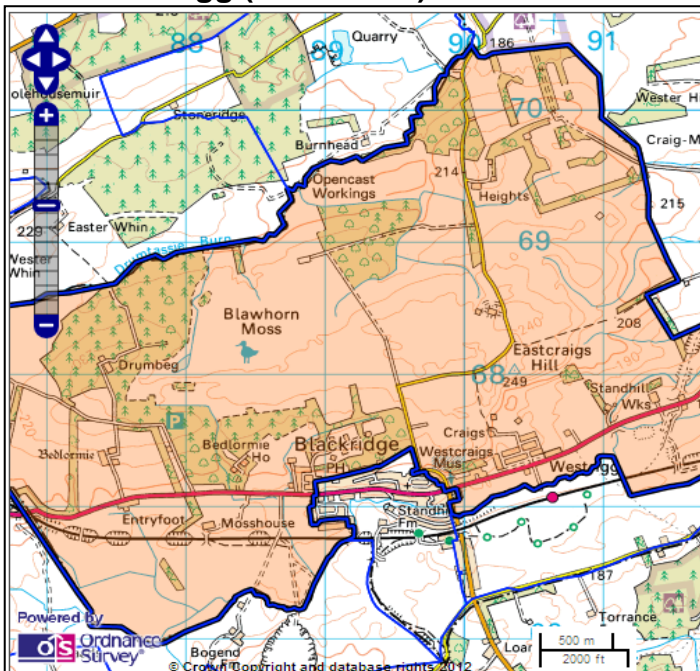
**Armadale Mayfield (S01006393)**



**Armadale South (S01006410)**



**Rural Westrigg (S01006392)**





# Census 2011

There is an abundance of data available from the 2011 Census. For information on the types of data available please visit the following link: <http://www.scotlandscensus.gov.uk/>

If you would like specific information for an area, please contact Andrew Cotton, Economic Development Officer with the council on 01506 283080 or email: [Andrew.Cotton@westlothian.gov.uk](mailto:Andrew.Cotton@westlothian.gov.uk)

[Back to Top](#)

## Employment/ Employability

### West Lothian Council School Leaver Destination Return 2013/14 (Initial Destination Percentages)

School	Destination						
	Total Leavers	Higher Education	Further Education	Training	Employment	% Pos*	Unemployed
<b>St. Kentigern's Academy</b>	193	39.9%	27.5%	3.6%	21.2%	<b>94.3%</b>	5.2%
<b>Armadale Academy</b>	155	26.5%	32.3%	8.4%	21.9%	<b>91.6%</b>	8.3%
<b>Bathgate Academy</b>	188	41.5%	21.3%	6.4%	22.3%	<b>92.6%</b>	7.5%
<b>West Lothian</b>	1986	41.1%	26.4%	4.5%	19.4%	<b>93%</b>	6.8%

\*Includes Voluntary Work and Activity Agreements

### Unemployment by Multi Member Ward as of February 2015

Multi Member Ward	Male JSA claimants	Female JSA claimants	Total JSA claimants	JSA claimant rate
	number	number	number	rate
<b>Armadale and Blackridge</b>	<b>129</b>	<b>60</b>	<b>18</b>	<b>1.9%</b>
Bathgate	190	82	27	2.3%
Broxburn, Uphall and Winchburgh	130	77	20	1.7%
East Livingston and East Calder	151	90	24	1.8%
Fauldhouse and the Breich Valley	129	77	20	1.9%
Linlithgow	58	30	88	0.9%
Livingston North	128	59	18	1.3%
Livingston South	173	91	26	1.6%
Whitburn and Blackburn	253	106	359	2.3%
<b>West Lothian</b>	<b>1,341</b>	<b>672</b>	<b>2,013</b>	<b>1.8%</b>

Use this link to get up to date information about employment and other economic facts about West Lothian: [http://www.westlothian.com/Home/wl\\_economy/facts\\_figures/](http://www.westlothian.com/Home/wl_economy/facts_figures/)

[Back to Top](#)

## Child Poverty

In the figures presented below, from End Child Poverty's 'Child Poverty Map of the UK', released in October 2014, children are classified as being in poverty if they live in families in receipt of out of work benefits or in receipt of in-work tax credits where their reported income is less than 60 per cent of median income. The measure is of income before housing costs, and therefore replicates the more modest, official estimate of how many children are in poverty, not taking account of the impact of high rent or mortgage payments.

Percentage of children in poverty, Oct-Dec 2013	BEFORE HOUSING COSTS	AFTER HOUSING COSTS
<b>Local Authority and wards</b>		
<b>West Lothian</b>	<b>13.27%</b>	<b>21.24%</b>
Linlithgow	6.80%	11.03%
Broxburn, Uphall and Winchburgh	11.89%	19.12%
Livingston North	14.97%	23.60%
Livingston South	13.23%	21.26%
East Livingston and East Calder	12.13%	19.62%
Fauldhouse and the Breich Valley	16.68%	26.32%
Whitburn and Blackburn	16.47%	26.24%
Bathgate	12.19%	19.60%
<b>Armadale and Blackridge</b>	<b>14.42%</b>	<b>23.00%</b>

More information is available in the report on the following link: [http://www.endchildpoverty.org.uk/images/ecp/Report\\_on\\_child\\_poverty\\_map\\_2014.pdf](http://www.endchildpoverty.org.uk/images/ecp/Report_on_child_poverty_map_2014.pdf)

[Back to Top](#)

## Useful Information and Links

**Community Regeneration Officer:** Vacant

Telephone Office:

Mobile:

E-mail:

### Ward Action Plan:

This plans shows what and how partners across the Armadale and Blackridge ward will be working together to achieve over the coming year, what outcomes they are working towards and how they will measure progress against these.[the local ward plans will be available electronically soon at this web address <http://www.westlothian.gov.uk/article/3851/Armadale-and-Blackridge-Ward>

### Scottish Fire and Rescue

The Local Fire and Rescue Plan for West

Lothian: [http://www.firescotland.gov.uk/media/610232/sfrs\\_local\\_plan\\_west\\_lothian\\_v1.pdf](http://www.firescotland.gov.uk/media/610232/sfrs_local_plan_west_lothian_v1.pdf)

This plan is the mechanism through which the aims of the SFRS's Strategic Plan 2013 – 2016 are delivered to meet the agreed needs of the West Lothian communities .<http://www.firescotland.gov.uk/>

### Police Scotland

Ward profiles have been produced outlining the service priorities for each ward. Information on Armadale and Blackridge is as follows: <http://www.scotland.police.uk/your-community/the-lothians-and-scottish-borders/west-lothian/fauldhouse-and-the-breich-valley/>

They also have a general page for the ward: <http://www.scotland.police.uk/your-community/the-lothians-and-scottish-borders/west-lothian/whitburn-and-blackburn/>

### Local Development Plan

The Local Development Plan provides a planning framework for delivering the planning vision for West Lothian, against which planning applications are assessed. The following web site contains information within each of the sections which is relevant to the ward: <http://www.westlothian.gov.uk/LDP>

### Annual Ward Employability Report

The multi-agency West Lothian Working Together Group produced a report for 2013/4 regarding the employability support provided by various agencies and the impact it is having on employability in the ward.

<http://coins.westlothian.gov.uk/coins/submissiondocuments.asp?submissionid=23085>

### COINS

COINS is the site where West Lothian Council keeps its committee reports and papers. These are public documents and can be viewed here: <http://coins.westlothian.gov.uk/coins/>

### Community News

The council web site hosts a page dedicated to local news. You can find out what is happening in Fauldhouse and The Breich Valley here:- <http://www.westlothian.gov.uk/armadaleandblackridgenews>

## Funding Newsletter

Community Regeneration produces a regular funding newsletter which outlines the funds accessible to voluntary organisations and groups in West Lothian. The latest version is available on the following link <http://www.westlothian.gov.uk/article/1980/Community-Grants>

## Community Councils

Community Councils are directly elected bodies which find out and express the views of the community to local authorities and other public bodies, and take action which they feel is in the interests of its community. There are six community councils in the Armadale and The Breich Valley – Armadale, Blackridge & Westfield, Bridgehouse and Torphichen. More information and contact details at: <http://www.westlothian.gov.uk/communitycouncils> . For further information you can contact the council's Community Council Liaison Officer at the following address [lorraine.mcgrorty@westlothian.gov.uk](mailto:lorraine.mcgrorty@westlothian.gov.uk)

[Back to Top](#)