



Gordon Allan
Chair
Broxburn & Uphall Traders' Association
c/o Glowworm Books & Gifts Ltd.
Unit 2, 5 Youngs Road
East Mains Industrial Estate
BROXBURN
EH52 5LY

Broxburn & Uphall Traders' Association – Solid Metal Roller Shutter Replacement Scheme

Following various discussions regarding the current presentation of the main shopping areas, BUTA and West Lothian Council would like to encourage business owners to replace shop front solid grey bare metal roller shutters with a new open and colour finished type. Whilst solid roller shutters are fairly effective in resisting direct criminal attack, they have a number of drawbacks:

1. It is not possible to see inside the premises, so if illegal entry has been gained from another route the intruders cannot be observed.
2. Where a large number of shop fronts have been fitted with solid shutters, particularly if untreated bare metal, it conveys a message that the area is vulnerable to crime. Not only is this an indicator to criminals, it also discourages the general public entering such areas.
3. Would-be customers cannot window shop outside business hours.
4. Solid shutters also provide a blank canvas for graffiti, which additionally conveys the message that the area is vulnerable to crime.

Security shutter technology has changed dramatically over the years, the emphasis now is to provide a better visual appearance and also provide sight into an empty building by increasing visibility. The main aim of this scheme is to project an aesthetically pleasing image on the high street whilst retaining a good level of security.

On the following page you will find a detailed illustration of the solutions available under this scheme along with budget costs and the appropriate grant levels for each of these options. The example costings were based on figures provided by the two named local companies, but of course you are free to use any company to complete any works.

I trust that you will find the terms of the scheme favourable and consider replacing any solid bare metal roller shutters you have on the front of your premises.

Gordon Allan
Chairperson BUTA
16 October 2012

Example costings for different types of security shutters.

(Costs provided by Secure Door & Window Specialists and Loaninghill Fabrications, Broxburn)

	1000 x 2440mm Manual Door	1000 x 2440mm Electric Door	2000 x 2000mm Manual Window	2000 x 2000mm Electric Window
Punched Lath aluminium, powder coated colour	Materials £594 Fitting £250	Materials £734.40 Fitting £350	Materials £722.25 Fitting £250	Materials £864 Fitting £350
Punched Lath steel, powder coated colour	Materials £391.50 Fitting £250	Materials £531.90 Fitting £350	Materials £519.75 Fitting £250	Materials £661.50 Fitting £350
Perforated Steel 6mm holes, powder coated colour	Materials £405 Fitting £250	Materials £546.75 Fitting £350	Materials £533.25 Fitting £250	Materials £695 Fitting £350
Perforated Steel 6mm holes, plastic coated colour	Materials £465.75 Fitting £250	Materials £607.50 Fitting £350	Materials £594 Fitting £250	Materials £735.75 Fitting £350
Wrought Ironwork Powder Coated	Swing Gate 1x2.4m Materials £481 Fitting £220	n/a	Grille 2x2m Materials £455 Fitting £250	n/a

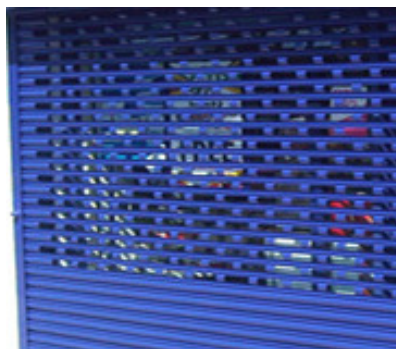
Grant structure costings based on above.

	Manual Door	Manual Window	Total	Grant %	Grant CAP *	Balance
Punched Lath aluminium, powder coated colour	£844.00	£972.25	£1,816.25	70%	£1,300.00	£516.25
Punched Lath steel, powder coated colour	£641.50	£769.75	£1,411.25	70%	£1,000.00	£411.25
Perforated Steel 6mm holes, powder coated colour	£655.00	£783.25	£1,438.25	60%	£900.00	£538.25
Perforated Steel 6mm holes, plastic coated colour	£715.75	£844.00	£1,559.75	60%	£1,000.00	£559.75
Wrought Ironwork Powder Coated	£705.00	£701.00	£1406.00	70%	£1,000.00	£406.00

* CAP set at maximum amount for each installation type taken from illustrated costs and rounded up.



Punched Lath Aluminium



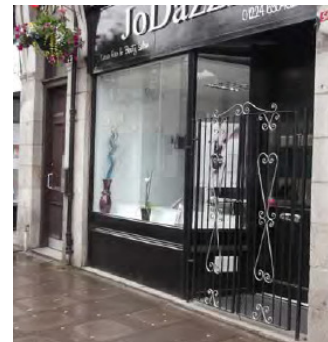
Punched Lath Steel



Perforated Steel 6mm Holes



Demountable Wrought Grille



Swing Wrought Gate