

## **Index**

Introduction.....4

How to Use the Directory ..... 5

### **Alphabetical List of Children’s Services**

Access 2 Employment.....6

Adult Basic Education .....6

Advice Shop .....7

Barnardo’s Hazel Grove.....8

Barnardo’s Lighthouse .....8

Barnardo’s Skylight Project .....8

Barnardo’s West Lothian Family Support Team.....9

Bethany Christian Trust.....9

Blackburn Family Centre.....10

B.L.E.S. .... 10

Broxburn Family & Comm Development Centre. ....11

Carers of West Lothian .....12

Childcare Information Service .....13

Child Disability Service.....13

Children & Families Resource Team .....14

Children & Families Social Policy..... 15

Child Protection ..... 18

Children & Young People Teams.....18

Circle West Lothian .....18

Citizens Advice Bureau (West Lothian) .....19

COZ (Chill Out Zone).....20

Couple Counselling Lothian.....21

Criminal Justice.....	21
Croftmalloch Young People’s Centre.....	22
Cruise Bereavement Care (West Lothian) .....	22
Domestic Abuse Service.....	23
Early Years Outreach Service .....	24
Edinburgh & Lothian Council on Alcohol .....	24
Education and Cultural Services.....	25
- Community Learning and Development.....	25
- Education Development and Quality Assurance....	25
- Education Establishments .....	30
- Education Support Services.....	49
Family Mediation Lothian .....	50
Family Protection Unit .....	51
First Steps Playgroup.....	53
Homeaid West Lothian.....	54
Home-Start West Lothian.....	54
Includem Hopetoun Street Hostel.....	55
Kiln House.....	55
Letham Young People’s Centre .....	56
Livingston Family Centre.....	56
Looked After Children Team.....	57
Lothian Autistic Society.....	57
NCH Scotland.....	58
NHS Lothian - West Lothian CHCP.....	59
Open Door Accommodation Project.....	68
Residential Schools and Specialist Services .....	70
Reviewing Officers Team.....	77
Save The Children.....	77

Scottish Adoption Association.....	78
Scottish Children’s Reporter Administration .....	79
Scottish Childminding Association (SCMA).....	79
Scottish Pre-school Playgroup Association.....	80
Sign Post .....	81
Social Care Emergency Team (SCET).....	81
St. Andrew’s Children’s Society.....	82
Sure Start.....	83
Throughcare-Aftercare Team.....	84
Victim Support West Lothian.....	85
Voluntary Action West Lothian.....	86
Voluntary Sector Overview.....	86
West Lothian CHCP.....	88
West Lothian Drug & Alcohol Service.....	89
West Lothian Women’s Aid .....	90
West Lothian Youth Action Project.....	91
Whitdale Family Centre .....	92
Whitrigg House .....	92
Who Cares? Scotland.....	93
Wraparound Care.....	93
Youth Justice Family Support .....	94
YWCA Livingston.....	94

## Introduction

'For Scotland's Children' (October 2001) described the lives of children across Scotland and urged better integrated working among services. The main areas for improvement in the report were listening to young people, easier access to services and working and learning together. The multi-agency West Lothian's Children's Services Management Group (CSMG) is keen to promote more joint working, more co-location of services and more training together on areas of common interest.

In West Lothian, the Integrated Children's Services Plan outlines how we aim to improve services for children, young people and their families. The plan covers all services for all children in West Lothian and has been jointly prepared following consultation with young people and their families, representation from various groups and parents and a wide range of people working in children's services including local authority, health, police, Reporter's Administration and voluntary services.

As a new member of staff in children's services in West Lothian, no matter what type of organisation you work for or service you provide, your help is needed in making sure the plan becomes a reality.

You can do this by joining all our existing staff in working in partnership to deliver best quality services for children, young people and their families. To help you, this pack has been prepared to inform you about all the relevant services and how to contact them, should you need to get advice or information or make a referral.

## How to use the directory

The pack has been prepared from information provided by services. The pack lists each service alphabetically, giving a brief summary of contact details and the role and structure of the service. Where appropriate, this is followed by a list of other locations for the service, for example health centres, educational establishments etc.

For general information on services in West Lothian visit [www.wlonline.org](http://www.wlonline.org)

## Acknowledgements

Thanks to all services for their contributions to the pack.

Alphabetical list of children's services

### **access2employment**

The Enterprise Centre, Almondvale Boulevard  
Livingston EH54 6QP  
01506 777944  
[sandra.darling@westlothian.gov.uk](mailto:sandra.darling@westlothian.gov.uk)  
[www.westlothian.com](http://www.westlothian.com)

Free and confidential service providing access to:

- skilled employment advisers
- help with producing a CV
- job search resources and vacancies
- help in finding and funding childcare (if eligible)
- available training in West Lothian
- funding to help people move into work (if eligible)
- financial advice and benefits

Advisers are available throughout West Lothian

– call for an appointment: FREEPHONE 0800 032 9768

### **Adult Basic Education**

Adult Learning Centre, 6-10 Glasgow Road  
Bathgate EH48 2AA  
01506 776333  
[janice.davidson@westlothian.gov.uk](mailto:janice.davidson@westlothian.gov.uk)  
[www.abeonline.org.uk](http://www.abeonline.org.uk)

We're here to help anyone over the age of 16 who wishes to improve their literacy or numeracy skills. We would also like to help anyone who is experiencing a hearing loss and wishes to learn lip-reading skills. We are keen to provide training to organisations to help raise awareness of literacy issues and to help spot and refer potential students. We operate throughout the whole of West Lothian and can be contacted on

FREEPHONE: 0800 731 1831

### **Service Structure**

Our service is part of Education & Cultural Services – Community Learning and Development.

## **Advice Shop**

Units 9-12 Waverley Industrial Estate  
Waverley Street, Bathgate EH48 4HY  
01506 776444  
[advice.shop@westlothian.gov.uk](mailto:advice.shop@westlothian.gov.uk)

## **Advice Shop**

Welfare Strategy Manager  
Alan Cunningham 01506 776455

The Advice Shop tackles poverty, social exclusion and disadvantage by helping people through income maximisation, debt counselling, employment advice and assisting with housing and fuel poverty.

## **Community Advice Team**

Campaign Development Officers:  
Rosie Bunce 01506 776230  
Melanie Bunce 01506 776228  
Saima Akhtar 01506 776229  
Julia Bain 01506 776278

The Community Advice Team works with people at risk of financial exclusion, including:

- families with children
- severely ill people
- housing association tenants

The team works in partnership with St. John's Hospital.

## **Energy Advice**

Energy Adviser John Scott 01506 776442

Advising all residents of West Lothian how to save money on gas and electricity and assisting clients with any energy problems.

## **Money Advice**

Senior Money Adviser Andrew Binnie 01506 775131

Offering a proactive approach, ensuring clients receive the best advice in respect of any debt issues from bank charges to bankruptcy.

## **Not in Employment, Education or Training (NEET)**

Campaign Development Officer Scott Mackay 01506 776232

NEET is for all 16-21 year-olds who are not in employment or training. Services include:

- Referrals from other agencies
- Assessments on capabilities
- CV production
- Employment/education/training search to meet client needs
- Assistance with benefits advice

Employment 22 Years Plus

Employment Adviser Yvonne Carson 01506 776231

We attempt to find employment for clients and work in conjunction with access 2 employment and Careers Scotland.

- referrals from other agencies
- assessments on capabilities
- CV production
- employment search
- assistance with job applications
- assistance with benefits advice

### **Barnardo's Hazel Grove**

6-8 Hazel Grove, Livingston EH54 5JW  
01506 438666  
[hazelgrove@barnardos.org.uk](mailto:hazelgrove@barnardos.org.uk)

Work with children aged 12 years and under and their families.

- Assessment
- Group work
- Individual and family work
- Volunteers

The service operates throughout West Lothian, primarily working with referrals from social workers.

### **Barnardo's Lighthouse**

27 Ocean Drive, Edinburgh EH6 6JL  
0131 561 1464  
[skylight@barnardos.org.uk](mailto:skylight@barnardos.org.uk)  
[www.barnardos.org.uk/skylight](http://www.barnardos.org.uk/skylight)

Lighthouse provides a specialist service for children and young people whose sexual behaviour is harmful to others. Services include assessment, family work, consultation and training. Referrals to the service in West Lothian are made through the Social Policy Resources Group.

### **Barnardo's Skylight Project**

27 Ocean Drive, Edinburgh EH6 6JL  
0131 561 1464  
[skylight@barnardos.org.uk](mailto:skylight@barnardos.org.uk)  
[www.barnardos.org.uk/skylight](http://www.barnardos.org.uk/skylight)

Skylight offers individual therapeutic work, usually weekly, to young people aged up to 18 years old who have been sexually abused. We use a range of therapeutic approaches to enable young people to explore and understand the thoughts, feelings and behaviours that may have arisen and for them to try and make sense of their experiences. All the staff have different approaches and training but all work in a non directive way.

Different approaches include art therapy, child psychotherapy, and counselling and Gestalt therapy. We aim

to match the child or young person, following assessment, with the worker whose approach will best suit their needs.

Skylight also delivers parent support to non-abusing parents as well as a consultancy service to the professional network.

We run Carers courses for foster carers in West Lothian at present and can provide a range of training programmes, individually tailored to need, on request (subject to funding).

### **Barnardo's West Lothian Family Support Services (main office)**

Melbourne House, 94 Mid Street,  
Bathgate EH48 1QF  
01506 656325  
[wfst.project@barnardos.org.uk](mailto:wfst.project@barnardos.org.uk)

Working in partnership with West Lothian Council to provide disability, family and short break support services to children and young people, from birth to school leaving age, who have significant learning disabilities (including complex health needs) and their families.

Services provided:

- advice to families who have a child/young person with a disability
- holiday activity programmes for children and young people - Beatle Campus for children with complex disabilities and medical needs, and Melbourne House for children with significant learning disabilities
- Short Break Service – Home Sitting and Activity Breaks
- Group Work
- intensive family support in conjunction with the Child Disability Service, including assessments

### **Service Structure**

Children's Services Manager, Isobel Denholm, is based in Melbourne House and Assistant Director Children Services, Peter Flanagan, is based in Barnardo's Dundee Office.

### **Bethany Christian Trust**

Bethany Hall (Registered Office)  
18 Bonnington Road, Edinburgh EH6 5JQ  
Tel: 0131 467 3030 Fax: 0131 625 5300  
[info@bethanyct.com](mailto:info@bethanyct.com)

Bethany Christian Trust is a registered charity providing residential accommodation and support services for homeless men and women.

Our accommodation in West Lothian:

[Martha House](#)  
Women's Supported Community

West Calder  
T: 01506 870040  
[marthahouse@bethanychristiantrust.com](mailto:marthahouse@bethanychristiantrust.com)

#### [Matthew House](#)

Men's Emergency Resettlement  
2 Bethany Home Farm  
North Greendykes Road  
Broxburn EH52 6PN  
T: 01506 507025  
[matthewhouse@bethanychristiantrust.com](mailto:matthewhouse@bethanychristiantrust.com)

Both units provide accommodation for four people. Matthew House is scheduled for closure in 2008 and will be replaced by a new unit in Bathgate.

#### **Service Structure**

Residential Support Services Director: John Rogers  
Matthew House Manager: Norrie Webb  
Martha House Manager: Glenn Rogers

#### **Blackburn Family Centre**

[1a Whitehill Road, Blackburn EH47 7HH](#)  
[01506 633438](tel:01506633438)

Blackburn Family Centre aims to provide opportunities for children to socialise in a safe, educational environment. It provides mutual support and self-help amongst parents, enabling both parent and child the chance of further education.

Our goals are to enable parents to address issues relating to improvements in family health and the local community. We ensure that families on low, fixed incomes have access to our resources.

#### **Blackburn Local Employment Scheme (BLES Training)**

[6A/B Whitestone Place, Whitehill Industrial Estate](#)  
[Blackburn EH48 2EW](#)  
[01506 634010](tel:01506634010)  
[bles.training@virgin.net](mailto:bles.training@virgin.net)

If you have just left school or are out of work, BLES offers "A Get Ready For Work" programme and offers skills in many areas of work. BLES offers a structured programme of training taking into account your abilities, aptitude and interests and provides work placements, which could lead to employment. Training is offered in skills of: woodwork, general building, painting and decorating, administration and many other trades/jobs. (tell us what you want to do )

Mon–Thurs 08.30am – 4.30pm  
Friday 08.30am – 3.30pm  
Eligibility

Anyone aged 16 - 17 years who is out of work and wants to learn new skills in order to find a permanent job.

Local businesses and individuals can contact BLES to have painting and decorating or joinery work done. Project estimates are given free with special rates for OAP's, unemployed and disabled. Trainees are supervised by qualified tradesmen.

## **Broxburn Family and Community Development Centre**

1-3 Henderson Place, Broxburn EH52 6EY  
01506 857158

Manager: Raymond Branton  
[raymond@broxburnfamilycentre.org](mailto:raymond@broxburnfamilycentre.org)  
[www.broxburnfamilycentre.org](http://www.broxburnfamilycentre.org)

Broxburn Family Centre offers a wide range of social & educational opportunities in an informal & positive environment. Adults and children of all ages and abilities are welcome.

With a focus on information technology, health promotion and the arts we constantly have exciting and innovative new activities. The Family Centre continually develops to meet the changing needs and interests of the community.

Broxburn Family Centre is an independent voluntary organisation recognised as a charity. We offer a wide range of services for both adults and children of all ages. We have a wide variety of classes ranging from First Aid to Coffee & Crafts.

For more up to date info contact Raymond Branton or visit [www.broxburnfamilycentre.org](http://www.broxburnfamilycentre.org)

- Adult Basic Education: We also offer a supportive learning environment for those wishing to improve their literacy and numeracy skills. This is a 1 to 1 service and fully confidential.
- A computer suite with internet access - computer classes and short courses are available.
- Playwork training. We currently offer an SVQ in Playwork Level 3. We can also offer practical training session in play related subjects and HSE approved First Aid. Contact Amanda Godsell.
- The Range Adventure Playground provides a variety of clubs and activities for children and young people aged 5-15 all year round.
- A crèche for pre-school children.
- Our Café is open Monday - Thursday 9.00 - 1.30pm.
- An Out of School Care Service for parent or carers in work or education. This service collects children from the 4 local primary schools in Broxburn. It is available after school in term time and all day during school holidays. For more info contact Nathan MacGillivray or visit [www.broxburnfamilycentre.org/oosc](http://www.broxburnfamilycentre.org/oosc)

**Contact Details:**

Raymond Branton - 01506 857158  
raymond@broxburnfamilycentre.org

Amanda Godsell - 01506 857581  
amanda@broxburnfamilycentre.org

Nathan MacGillivray - 01506 857158  
oosc@broxburnfamilycentre.org

**Carers of West Lothian**

Strathbrock Partnership Centre  
189a West Main Street, Broxburn EH52 5LH  
01506 771750  
[office@carers-westlothian.com](mailto:office@carers-westlothian.com)  
[www.carers-westlothian.com](http://www.carers-westlothian.com)

Provide support, information, advice, and listening ear for carers of all ages across West Lothian. We produce an information pack giving information on support services, benefits and useful contact details for Carers in West Lothian. We also offer

a directory of respite services in the area, detailing breaks available to carers in West Lothian. The organisation offers free training courses for carers and facilitates a Carers' Voice Group whose members lobby on behalf of carers locally and nationally.

We publish a quarterly newsletter.

Carers Centre Manager, Mary-Denise McKernan, is responsible to the Management Committee. Centre Manager manages a core staff team based within the Carers Centre in Strathbrock. Also manages an Outreach Project based within the Carers Centre, and a Young Carers Partnership Project based in the Children and Young People Teams' office in Bathgate.

**Other Offices / Locations:**

Young Carers Partnership Project  
25 North Bridge Street, BATHGATE EH48 4PJ  
01506 776999  
[wilma.philpot@westlothian.gov.uk](mailto:wilma.philpot@westlothian.gov.uk)

## **Childcare Information Service**

West Lothian Civic Centre  
Howden Road South, Livingston EH54 6FF  
01506 281265  
[jo.dinning@westlothian.gov.uk](mailto:jo.dinning@westlothian.gov.uk)

To provide information and details on all types of registered childcare in the area. Further information is available from the above number and email address.

The service is managed by an Education Officer based in Lindsay House who is responsible for the development of the service and the service is run by an Administrator.

## **Child Disability Service**

2nd Floor, Lomond House, Beveridge Square  
Livingston EH54 6QF  
01506 773789 Fax: 01506 773790  
[firstname.lastname@westlothian.gov.uk](mailto:firstname.lastname@westlothian.gov.uk)  
Manager: Linda Sanders

The Child Disability Service (CDS) was established to ensure social work services are made available to disabled children and their families in West Lothian. The team strives to promote social inclusion and to maximise the potential of individual children with an emphasis on providing, as far as possible, services in local communities.

The CDS supports children and young people between birth and 16 years who live in West Lothian and have a significant or complex disability and where the child's disability is the main issue for seeking support. This includes:

- learning disability
- physical disability
- motor impairment
- hearing impairment
- visual impairment
- language and communication disorder
- autism spectrum disorder

In addition to providing services directly related to the impact of disability, the CDS is also engaged in delivering statutory services.

### **Service Structure**

The service is part of Social Policy and the manager is Linda Sanders.

## **Children & Families Resource Team**

1st Floor, Lomond house, Beveridge Square  
Livingston EH54 6QF  
01506 775959  
[fostercare@westlothian.gov.uk](mailto:fostercare@westlothian.gov.uk)  
[www.wlcreources.org.uk](http://www.wlcreources.org.uk)

Managers: Iona Miller, Margaret Evans

The Children & Families Resource Team is responsible for the recruitment, assessment, training and support of carers for children and young people. Our services include foster care, adoption and permanence, respite care for children with disabilities, and outreach support. We also provide assessment and support services for kinship care arrangements, and reports for the courts in relation to legally securing family care.

We are committed to supporting carer families in ensuring that National Care Standards are met by upholding principles of dignity, privacy, choice, safety, diversity and equality to maximise the potential of each child and young person. We are committed to working with partner agencies to provide continuously improving services which are responsive to service users' changing needs.

### **Service Structure**

The service is part of Social Policy and is line managed by Jim Logue, Group Manager (Looked After Children)

## **Children & Families Social Policy**

West Lothian Civic Centre, 1<sup>st</sup> Floor South  
Howden Road South, Livingston  
01506 281909  
[firstname.lastname@westlothian.gov.uk](mailto:firstname.lastname@westlothian.gov.uk)

Ian Quigley, Head of Social Policy

Jennifer Scott, Senior Manager

Jo MacPherson, Group Manager (Fieldwork Services)

Jim Logue, Group Manager (Looked After Children)

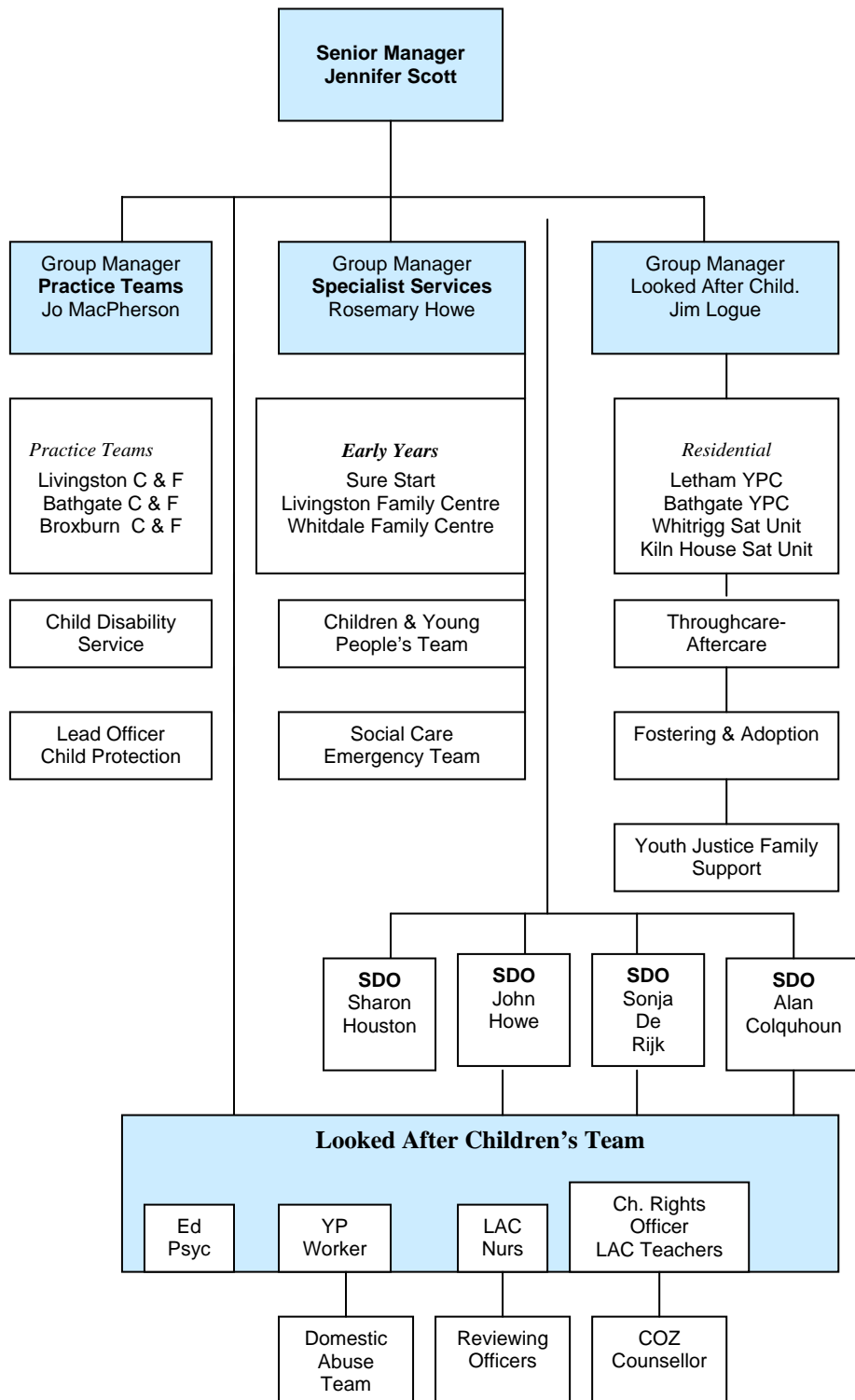
Rosemary Howe, Group Manager (Specialist Services)

Provision of all social work services, including practice teams, residential units, family and early years centres, fostering and adoption, schools services and support to young carers. Also covers Sure Start, Child Disability Service, Youth Justice Family Support, Throughcare-Aftercare Team and Domestic Abuse Service. Contributes to joint management arrangements for Social Work Addictions Team.

### **Statutory duties**

- to 'advise, guide and assist' children and their families
- to look after and accommodate children and young people, and provide throughcare and aftercare services
- to provide foster care and residential accommodation
- to protect children
- to provide reports to the courts and to Scottish Children's Reporter's Administration and carry out duties for the Hearing system
- to offer assessments of need for children with disability, carers of disabled children and those affected by disability of others including young carers.

**West Lothian Council Social Policy  
Children and Families Service  
Management Structure**



**Torcroft Young**  
People's Centre  
Raeburn Crescent  
WHITBURN EH47 8HQ  
Manager: Wendy Milne  
01506 678040

C&F Practice Team  
**Bathgate SW Centre**  
69 Whitburn Road  
BATHGATE EH48 1HE  
01506 776700  
Managers:  
Colin Elliott  
Susan McKenzie

C&F Practice Team  
**Livingston SW Centre**  
Cheviot House  
Owen Square  
LIVINGSTON EH54 6PW  
01506 777777  
Managers:  
Margaret Keillar  
Sarah Summers  
Judith Batson  
Norma Paterson

C&F Practice Team  
**Strathbrock Partnership Centre**  
189a West Main Street  
BROXBURN EH52 5LH  
01506 775666  
Managers:  
Elaine McCready  
Sheila Morris

**Child Disability Service**  
Lomond House  
Beveridge Square  
LIVINGSTON EH54 6QF  
01506 773789  
Manager: Linda Sanders

**C&F Resource Team**  
Lomond House  
Beveridge Square  
LIVINGSTON EH54 6QF  
01506 775959  
Managers:  
Iona Millar  
Margaret Evans

**Children's Right's Officer**  
Strathbrock Partnership Centre  
189a West Main Street  
BROXBURN EH52 5LH  
01506 777000  
Jill Keegan

**Children & Young People Team**  
25 North Bridge Street  
BATHGATE EH48 4PJ  
01506 776929  
Team Leaders:  
Dale Marsters

**Domestic Abuse Service**  
Ground Floor  
West Lothian Civic Centre  
Howden Road West  
Livingston EH54 6FF  
Manager: Susan Lawson

**Kiln House**  
34 Kirkfield West  
LIVINGSTON VILLAGE EH54 7BE  
01506 414807  
Fax 01506 591726  
AUM: Marie Chisholm

**Letham Young People's Centre**  
Craigshill  
LIVINGSTON EH54 5NX  
01506 777313  
Fax: 01506 777310  
Manager: Wendy Milne

**Livingston Family Centre**  
5 Jackson Place  
LIVINGSTON EH54 6RH  
01506 775775  
Fax: 01506 775779  
Manager: Willie Hunter

**Social Care Emergency Team (SCET)**  
West Lothian Civic Centre  
Howden Road West  
Livingston EH54 6FF  
01506 777401 / 777402  
Manager: Lyn McLean

**Social Work Addictions Team**  
Lomond House  
Beveridge Square  
LIVINGSTON EH54 6QF  
01506 773681  
Manager: Jane Berkeley

**Sure Start Team**  
Unit G, Kirkton Business Centre  
1 Kirk Lane  
LIVINGSTON EH54 7AY  
01506 775836  
Fax 01506 775839  
Manager: Paula Huddart

**Throughcare-Aftercare Team**  
Lomond House Beveridge Square  
LIVINGSTON EH54 6QF  
01506 773720  
Fax: 01506 773761  
Manager: JJ Walsh

**Whitdale Family Centre**  
55b Whitdalehead Road  
WHITBURN 8JU  
01501 744380  
Fax 01501 749220  
Manager: Margo McCreight

**Whitrigg House**  
Whitrigg House, Redmill  
WHITBURN EH47 0RJ  
01501 744183  
AUM: Linda McGrogan

**Youth Inclusion Project**  
West Lothian House  
Almondvale Boulevard  
Livingston EH54 6QG  
YP Development Worker:  
Allan Kidd

**Youth Justice Family Support**  
2a Shiel House  
Shiel Walk  
LIVINGSTON EH54 5EH  
01506 774085  
Manager: Keviin Carter

## **Child Protection**

West Lothian Child Protection Committee is made up of senior representatives from the local authority, NHS Lothian, Lothian and Borders Police, SCRA, the Procurator Fiscal, the private sector and a representative of the voluntary agencies in West Lothian. The CPC is chaired by Jo Macpherson, Group Manager for Practice Teams. Jo Macpherson 01506 777770  
jo.macpherson@westlothian.gov.uk

The main CPC has four sub committees chaired by the Chair of the CPC, vice Chairs and the Lead Officer. Lead Officer for Child Protection: Jane Ridgway 01506 281845  
jane.ridgway@westlothian.gov.uk

## **Children and Young People Teams**

25 North Bridge Street, Bathgate

01506 776929

Team Leaders: Ian Colgan, Dale Marsters Lisa McFarlane

Three teams, consisting of Youth Strategy Workers, Education Welfare Officers and Family Support Workers, have been established to offer a pupil and family support service.

The teams are based in school clusters and work in collaboration with appropriate partners to help ensure that children and young people with difficulties are prevented from finding themselves the subject of referrals to statutory services, through early intervention and the use of a range of innovative methods.

## **Circle West Lothian**

c/o Blackburn Homeless Unit

151 Rowan Drive, Blackburn, EH47 7NZ

01506 653360

firstname.lastname@westlothian.gov.uk

Circle provides intensive support to children and families affected by parental drug and/or alcohol use in West Lothian including:

- Support to parents with parenting issues and on developing a safer lifestyle
- Encouraging and supporting parents to engage with drug and alcohol services
- Individual and group support to children and adults
- Support to access other services for children and families

Referrals can be made by a parent or professional.

## **Citizens Advice Bureau (West Lothian)**

Suite Seven, Shiel House, Craigshill  
Livingston EH54 5EH

01506 432977 (advice)  
01506 436132 (administration)  
01506 431061 (appointments)  
Fax: 01506 441986

[enquiries@cabwestlothian.org.uk](mailto:enquiries@cabwestlothian.org.uk)  
[www.cabwestlothian.org.uk](http://www.cabwestlothian.org.uk)  
[www.adviceguide.org.uk](http://www.adviceguide.org.uk)

Citizens Advice Bureau West Lothian offers advice, information and assistance across a wide range of subjects to the communities of West Lothian. Our core topics are benefits, consumer debt, employment, housing, relationships, tax and utilities. Our service is delivered by a team of trained volunteer advisors who are supported by our paid staff.

We have specialist advisers who offer assistance in the areas of employment and money advice

### **Service Structure**

Our paid staff team consists of a Manager, Advice Session Supervisor and a Receptionist/Administrator. All our advisers undertake the national Adviser Training Programme and are assessed on their competence on a regular basis.

Our activities are monitored regularly and organisational and quality of advice audits are carried out by Citizens Advice Scotland.

Our core funding is provided by West Lothian Council, who also audit our work through their Best Value process.

### **Advice Sessions**

Mon, Tues & Thurs: 10.00am–12.30pm & 1.30–4.00pm

Wednesday: 10.00am–12.30pm

Friday: 10.00am–3.30pm

All the above sessions offer advice by telephone. Open door (drop-in) access is provided on Monday, Tuesday, Thursday and Friday between 10am and 12.30pm. There is no drop-in service in the afternoons.

## **COZ - Chill Out Zone**

7 Gardners Lane, Bathgate EH48 1TP

01506 652436

Contact: Ruth Ritchie

The Service opened in June 2003, the Chill Out Zone (known as COZ) is a Healthy Living Centre for young people aged 12-20 living in West Lothian. Based in Bathgate, its aim is to improve the health and well being of young people through the provision of a range of 'young people centred' health and development services, including: -

- access to a multi-disciplinary staff team with backgrounds in health, education and youth work, offering information, advice and support with a range of health related issues
- health clinic, offering access to a range of confidential medical services concerning young people's physical, emotional, mental and sexual health
- drop in service with access to a range of information and advice from a range of specialist workers and planned activities
- access to a café providing light and healthy snacks and opportunities to develop skills in food preparation and cooking
- referral to specialist agencies
- computer suite with free access to Internet
- community resource offering a unique setting for promotions and launches.
- confidential counselling

COZ is funded by:

- Children 1st
- West Lothian Council Social Policy
- West Lothian Council Education Services
- West Lothian NHS Healthcare Trust

Co-ordinated by Children 1st, COZ services are developed and delivered in partnership with: -

- Community Education Services
- West Lothian NHS Healthcare Trust
- Voluntary Organisations
- Young People

## **Couple Counselling Lothian**

9A Dundas Street, Edinburgh, EH3 6QG

0131 556 1527

[cclothian@btopenworld.com](mailto:cclothian@btopenworld.com)

Couple Counselling Lothian offers counselling and a range of other services for couples and individuals. As well as helping those who are thinking of staying together, separating or dealing with divorce, we see many people whose relationship had ended and who want to explore the issues around making new relationships.

### **Service Structure**

Company limited by guarantee, of charitable status.

Manager: Deirdre Bett (available Mon-Wed)

Practice Manager: Audrey Neill (available Thurs-Fri)

Opening hours for telephone enquiries:

Monday - Thursday 9.00am to 9.00pm

Friday - 9.00am to 4.00pm

Saturday - 10.00am to 1.00pm

## **Criminal Justice**

West Lothian Civic Centre, 1<sup>st</sup> Floor South

Howden Road South, Livingston EH54 6FF

01506 280999

[criminaljusticeteam@westlothian.gov.uk](mailto:criminaljusticeteam@westlothian.gov.uk)

Criminal Justice Manager: Tim Ward

West Lothian Council Criminal Justice Social Work Service is committed to promoting community safety in order to help make this community a safer place to live. The service provides reports and advice to the Courts and supervises offenders on statutory orders such as Probation and Community Service. Criminal Justice also provides statutory and non-statutory voluntary support to offenders in the community.

### **Service Structure**

The service is operated by West Lothian Council Social Policy.

### **Torcroft Young People's Centre**

Raeburn Crescent, Whitburn EH47 8HQ  
firstname.lastname@westlothian.gov.uk  
01506

Manager: Wendy Milne

Purpose-built in 2007, Torcroft Young People's Centre provides residential care and support to six young people. Each young person has a key worker and staff work closely with Practice Team colleagues and partner agencies in providing an individualised care plan which is reviewed regularly through the LAC review process.

Referrals for a placement should be made to the Resources Group which meets weekly.

#### **Structure**

The centre is part of Social Policy and is line managed by Jim Logue, Group Manager (Looked After Children)

### **Cruise Bereavement Care (West Lothian)**

01501 645001 - Referrals  
01786 821730 - Administrator

Cruise provides information, advice and counseling for bereaved children and young people.

National Office: 01738 443444

## **Domestic Abuse Service**

West Lothian Civic Centre, Ground Floor North  
Howden Road South, Livingston EH54 6FF  
01506  
domdas@westlothian.gsx.gov.uk  
Manager: Susan Lawson

### **The Service**

Opened in 2007, the Domestic Abuse Service works with women and children who have experienced (or are experiencing) domestic abuse.

Our Minority Population Worker provides a service to women and children from the black and minority ethnic, foreign nationals and gypsy travellers communities, and our Partner Support Worker works with female partners of men who have participated (or are participating) in the court-mandated 'Change Programme'.

### **Services for children:**

- Safety planning
- Individual work
- Groupwork
- Prevention awareness / training
- 'Drop in' service within selected schools
- Safety planning
- Advocacy, advice and information
- Signposting to other agencies
- Interpretation and translation service available

The service is funded by the Scottish Government and West Lothian Council.

## Early Years Outreach Service

C/o Livingston Family Centre, 5 Jackson Place, Eliburn  
Livingston EH54 6RH  
01506 775775 Fax 01506 775779  
[lfc@westlothian.gov.uk](mailto:lfc@westlothian.gov.uk)  
[www.livingstonfamilycentre.org.uk](http://www.livingstonfamilycentre.org.uk)

The Early Years Outreach Team was formed in September 2005 and operates from Livingston Family Centre. Comprising a small team of qualified Nursery Officers, we provide a range of services to families with young children. These include individual support packages, parenting assessments, reports for Children's Hearings and CP case conferences and general advice and guidance on parenting.

Based in Livingston, the outreach team serves the whole of the West Lothian area.

### Service Structure

The team is managed by Willie Evans, Unit Manager and supervised by senior staff from Livingston Family Centre.

## Edinburgh & Lothian Council on Alcohol

6 Clifton Terrace, Edinburgh, EH12 5DR  
Contact: Meichelle Walker  
0131 337 8188 0131 337 9825 fax  
[elca@btconnect.com](mailto:elca@btconnect.com)

Provision of free specialist advice, information, counselling and support for anyone worried about their own or someone else's drinking. ELCA's services open to anyone 16 years and over. Specific Tenancy Support and Supported Accommodation Service based in West Lothian for anyone who is homeless or at risk of becoming homeless due to their alcohol problem.

Managed by a Board of Directors (Management Committee) the senior management team manages day to day responsibilities:  
Meichelle Walker – General Manager, Edinburgh.  
Anne Hanley – Practice Manager, Livingston.  
Pamela Gordon – Administration Manager, Livingston.

### Other locations

ELCA West Lothian Services, Suite P, Kirkton Business Centre,  
Kirk Lane, Livingston Village, Livingston, EH54 7AY 01506 414  
247

Voluntary Counselling Service based in the Primary Care Health Centre in Bathgate on Friday afternoons. Appointments made through our main office in Edinburgh.

## Cultural, Communities & Economic Development

Strathbrock Partnership Centre, 189a West Main Street  
Broxburn EH52 5LH

The service works with young people, providing an educational process within safe settings based on experiential learning, participation in decision making and confidence building. Its aim is to provide a range of opportunities which will aid the young people's personal and social development. The core activities are:

- Mainstream Clubs
- Holiday Activities
- Issue Based
- International Work
- Youth Participation/Youth Information
- Young People and Community Safety
- Support to Volunteers

### Contact List

[Alistair Shaw](#)

Head of Services

01506 281754

[Alistair.shaw@westlothian.gov.uk](mailto:Alistair.shaw@westlothian.gov.uk)

[Irene Bannon](#)

Administrative Officer

01506 281649

Almondbank Comm Ed Resource Centre

Almondbank P.S., Livingston EH54 5EJ

[Johann Timmins](#)

01506 777505 Fax 777507

### Work with Young People Team Base

Strathbrock Partnership Centre, 189a West Main Street

Broxburn EH52 5LH

[Alastair Colquhoun](#)

Team Manager – Work with Young People

01506 774702

[alastair.colquhoun@westlothian.gov.uk](mailto:alastair.colquhoun@westlothian.gov.uk)

[Karen Marshall](#)

Admin Asst 01506 774701

[Annette Lambourne](#)

Training & Quality Assurance Officer

**ADDIEWELL COMMUNITY EDUCATION WING**

Church Street, Addiewell EH55 8PG  
Co-ordinator: Andy Hunter 01501 762796

**ARMADALE COMMUNITY EDUCATION CENTRE**

North Street, Armadale EH48 3QB  
Co-ordinator: Kath Brown 01501 678512 Fax 01501 678511

**BATHGATE COMMUNITY EDUCATION CENTRE**

Marjoribanks Street Bathgate EH48 1AH  
Co-ordinator: Joyce Murphy 01506 775151 Fax 775155

**BLACKBURN COMMUNITY EDUCATION CENTRE**

Ashgrove Blackburn EH47 7LJ  
Co-ordinator: Ralf Bell 01506 653014

**BRIDGEND COMMUNITY EDUCATION CENTRE**

Aldhill Road Bridgend EH49 6NZ  
Contact: 01506 834536

**BROXBURN COMMUNITY CENTRE**

Strathbrock Partnership Centre  
189A West Main Street Broxburn EH52 5LH  
Co-ordinator: Linda Sayers 01506 771735 Fax 01506 771737

**CARMONDEAN COMMUNITY CENTRE**

Fells Rigg Livingston EH54 8AX  
Co-ordinator: Vacancy 01506 439568

**CRAIGINN CENTRE**

Main Street, Blackridge EH48 3SP  
Co-ordinator: Linda Maxwell 01501 753227 Fax 753227

**CROFTHEAD FARM COMMUNITY CENTRE**

Templar Rise, Livingston EH54 8DG  
Co-ordinator: Karen Kirton 01506 777707

**DECHMONT MEMORIAL COMM EDUCATION CENTRE**

Main Street, Dechmont EH52 6LJ 01506 811022

**DEDRIDGE COMMUNITY EDUCATION WING**

Dedridge Primary School, Dedridge East, Livingston EH54 6JQ  
01506 412831

**EAST CALDER COMMUNITY EDUCATION CENTRE**

143 Main Street, East Calder EH53 0EP  
Co-ordinator: Marlene Burford 01506 881557

**EAST WHITBURN COMMUNITY EDUCATION CENTRE**

Hen Nest Road, East Whitburn, EH47 8EX  
Co-ordinator: Janette Wood 01501 740938

**ELIBURN COMMUNITY EDUCATION CENTRE**

Garden Place, Eliburn, Livingston  
01506 415492

**FAULDHOUSE COMMUNITY EDUCATION CENTRE**

Lanrigg Road, Fauldhouse EH47 9JA  
Co-ordinator: Vacancy 01501 770552 FAX 770910

**FORESTBANK COMMUNITY EDUCATION CENTRE**

Forestbank, Ladywell, Livingston, EH54 6DX  
Co-ordinator: Sandra McLaughlan 01506 430035

**GREENRIGG COMMUNITY EDUCATION CENTRE**

Greenrigg Primary School, Polkemmet Road, Greenrigg,  
Harthill 01501 770552

**LANTHORN COMMUNITY EDUCATION COMPLEX**

Kenilworth Rise, Livingston EH54 6JL  
Co-ordinators: Donna Lee 01506 777707 FAX  
417679

**LETHAM COMMUNITY EDUCATION WING**

Letham Primary School, Forth Drive, Livingston EH54 5LZ  
01506 432013

**LIVINGSTON STATION COMMUNITY EDUCATION CENTRE**

4 Main Street, Deans, Livingston EH54 8BE  
Co-ordinator: Peter Christie 01506 414002

**LIVINGSTON STATION COMMUNITY EDUCATION YOUTH CENTRE**

7 Main Street, Livingston EH54 8BE  
Co-ordinator: Peter Christie 01506 411295

**LIVINGSTON VILLAGE COMMUNITY EDUCATION CENTRE**

Kirkton North Road, Livingston EH54 7EQ  
01506 417343

**MID CALDER INSTITUTE HALL**

15 Market Street, Mid Calder, EH53 0AT  
Co-ordinator: Jim Allan 01506 881246

**MOSSWOOD COMMUNITY EDUCATION CENTRE**

Ferguson Way, Knightsbridge, Livingston EH54 8JF  
Co-ordinator: Margaret McClafferty 01506 437661

**NEWYEARFIELD FARM COMMUNITY EDUCATION CENTRE**

Hawkbrae, Ladywell West, Livingston EH54 6TW  
01506 462458

**NEWTON COMMUNITY EDUCATION CENTRE**

26 Duddingston Crescent, Newton EH52 6QG  
Co-ordinator: Angela Grant 0131 331 3290

**PHILPSTOUN COMMUNITY EDUCATION CENTRE**

Main Street, Philpstoun EH49 6RA  
Co-ordinator: Hazel Baff 01506 834360

**RIVERSIDE COMMUNITY EDUCATION WING**

Riverside Primary School, The Mall, Livingston EH54 5EJ  
01506 777691

**SEAFIELD COMMUNITY EDUCATION CENTRE**

Main Street, Seafield EH47 7AL  
Co-ordinator: Caroline Fraser 01506 631791

**SPRINGFIELD COMMUNITY EDUCATION WING**

Springfield Primary School, Springfield Road, Linlithgow  
EH49 7SN  
01506 847455 FAX 847455

**STONEYBURN COMMUNITY EDUCATION CENTRE**

Main Street, Stoneyburn EH47 8BY  
Co-ordinator: Joe Smith 01501 762323

**THE JAMES YOUNG HIGH SCHOOL**

Quentin Rise, Dedridge West, Livingston EH54 6NG  
01506 774472 FAX 497014

#### TORONTO COMMUNITY EDUCATION WING

Toronto Primary School, Howden East, Livingston EH54 6BN  
01506 431465

#### TORPHICEN COMMUNITY EDUCATION CENTRE

Bowyett, Torphicen EH48 4LZ  
Co-ordinator: Laura Redmond 01506 652383

#### UPHALL COMMUNITY EDUCATION CENTRE

Strathbrock Place, Uphall EH52 6BN  
Co-ordinator: Denise Doig 01506 854451

#### WEST CALDER COMMUNITY EDUCATION CENTRE

Dickson Street, West Calder EH55 8DZ  
Co-ordinator: Danny Graham 01506 871278 FAX 871738

#### WHITBURN COMMUNITY EDUCATION CENTRE

Manse Road, Whitburn EH47 8EZ  
Co-ordinator: Elaine Moss 01501 678888 FAX 678889

#### WINCHBURGH COMMUNITY EDUCATION CENTRE

Craigton Place, Winchburgh EH52 6RW  
Co-ordinator: Alfie Carmichael 01506 890348

#### Community High Schools

#### DEANS COMMUNITY HIGH SCHOOL

Eastwood Park, Deans, Livingston EH54 8PS  
01506 431972 FAX 497025

#### INVERALMOND COMMUNITY HIGH SCHOOL

Willowbank, Ladywell East, Livingston EH54 6HN  
01506 438093

### Education & Cultural Services Education Development and Quality

West Lothian Civic Centre, 2 Floor  
Howden Road South, Livingston EH54 6FF  
[firstname.lastname@westlothian.gov.uk](mailto:firstname.lastname@westlothian.gov.uk)

#### The Service

- Curriculum Support & Development
- Quality Assurance of Schools including Review of Schools and Head Teachers
- Recruitment of Head Teachers & Other Senior Staff

#### Statutory Duties:

- To monitor the quality of Education Provision in West Lothian Schools and ensure implementation of The Schools (Scotland) Act 2000.

## **Senior Management :**

### **Gordon Ford**

Director of Education and Cultural Services  
Secretary to the Director: Tracy Sinton - 281677

### **Mary Rankine**

Head of Education (Quality Assurance)  
Support Research Assistant: Catherine Jack - 281665

### **Moira Niven**

Head of Education (Development)  
Support Research Assistant: Grace Harris - 281660

### **Ann Durnian**

Senior Education Development Manager - 777547

### **Education Officers:**

Alan Millar 777445  
Ronnie Boyd 777446  
Isobel Chalmers 776105  
Meg Morrison 776137  
Donald Stewart 776023  
John Tease 776380  
Phyllis Wood 777543  
Alison Watson 777548  
Kay Ryan 776112  
Doreen McPhail 777449  
David McLean 777449

## **Education Establishments**

### **Gordon Ford – Head of Education & Cultural Services**

#### **Early Years Centres**

Bathgate Early Years Centre  
Whitburn Rd, Bathgate EH48 2RD  
Fax: 01506 776244  
Email: bathgate.eyc@wled.org.uk

HT: Mvairi Lynch  
Phone: 01506 776234

Inveralmond Early Years Centre  
Willowbank, Ladywell Livingston EH54 6HN  
Aileen German  
01506 441907  
[inveralmond.eyc@wled.org.uk](mailto:inveralmond.eyc@wled.org.uk)

Knightsridge Early Years Centre  
Cameron Way, Knightsridge Livingston EH54 8HE  
Morag Stewart  
01506 444970  
[knightsridge.eyc@wled.org.uk](mailto:knightsridge.eyc@wled.org.uk)

Whitdale Early Years Centre  
55b Whitdalehead Rd Whitburn EH47 8JU  
Lynne Glen  
01501 744388  
[whitdale.eyc@wled.org.uk](mailto:whitdale.eyc@wled.org.uk)

### Nurseries

Bathgate West Nursery  
63 Millburn Rd Bathgate EH48 2AF  
Mvairi Lynch 01506 652004  
01506 652004  
[bathgatewest.ns@wled.org.uk](mailto:bathgatewest.ns@wled.org.uk)

Bonnytoun Nursery,  
161 Springfield Rd, Linlithgow EH49 7SN  
Anne Matonti  
01506 847454  
[bonnytoun.ns@wled.org.uk](mailto:bonnytoun.ns@wled.org.uk)

Eastertoun Nursery,  
Manse Ave, Armadale EH48 3HS  
Susan Cowan  
01501 732299  
[eastertoun.ns@wled.org.uk](mailto:eastertoun.ns@wled.org.uk)

Eliburn Nursery  
Class 5 Jackson Pl, Eliburn, Livingston EH54 6RH  
Aileen German  
01506 419484  
[inveralmond.eyc@wled.org.uk](mailto:inveralmond.eyc@wled.org.uk)

Glenvue Nursery  
Dedridge East Livingston EH54 6JQ  
Fiona Barber  
01506 412333  
[n/aglenvue.ns@wled.org.uk](mailto:n/aglenvue.ns@wled.org.uk)

Hopefield Nursery  
Hopefield Rd Blackburn EH47 7HZ  
Irene McCrystal01506 630944  
01506 630944  
hopefield.ns@wled.org.uk

Kirkhill Nursery  
Rashierigg Broxburn EH52 6AW  
Anne Moir  
01506 853118  
n/akirkhill.ps@wled.org.uk

Ladywell Nursery  
Willowbank, Ladywell Livingston EH54 6HN  
Marian Gibb  
01506 434542  
ladywell.ns@wled.org.uk

Polbeth Nursery  
Polbeth Rd West Calder EH55 8SR  
Fiona Barber  
01506 872511  
polbeth.ns@wled.org.uk

Woodlands Nursery  
Harburn Ave, Deans Livingston EH54 8NQ  
Mary McNamee01506 412608  
01506 412608  
woodlands.ns@wled.org.uk

### **Primary Schools**

Addiewell Primary  
Church St, Addiewell EH55 8PG  
Ruth Malcolm  
01501 762794  
[addiewell.ps@wled.org.uk](mailto:addiewell.ps@wled.org.uk)

Armadale Primary  
Academy St Armadale EH48 3JD  
Allison Phillips01501 730282  
01501 730301  
[armadale.ps@wled.org.uk](mailto:armadale.ps@wled.org.uk)

Balbardie Primary  
Torphichen St Bathgate EH48 4HL  
Audrey Ford (Acting)  
01506 652155  
[balbardie.ps@wled.org.uk](mailto:balbardie.ps@wled.org.uk)

Bankton Primary  
Kenilworth Dr, Dedridge Livingston EH54 6JL  
Marlyn Taylor 01506 413001  
01506 418550  
bankton.ps@wled.org.uk

Bellsquarry Primary  
52 Calder Rd, Bellsquarry Livingston EH54 9AD  
Charlette Robertson  
01506 410777  
bellsquarry.ps@wled.org.uk

Blackburn Primary  
Riddochhill Rd, Blackburn EH47 7HB  
Fiona MacKenzie  
01506 653481  
blackburn.ps@wled.org.uk

Blackridge Primary,  
Main St Blackridge EH48 3RJ  
Gillian Millar (Acting)  
01501 751223  
blackridge.ps@wled.org.uk

Boghall Primary  
Elizabeth Dr, Boghall, Bathgate EH48 1JB  
Ann Duncan  
01506 652609  
boghall.ps@wled.org.uk

Bridgend Primary  
Auldhill Rd Bridgend EH49 6NZ  
Helen Rarity  
01506 834204  
bridgend.ps@wled.org.uk

Broxburn Primary School Lane, off West Main St Broxburn EH52  
5RP  
Catriona Grant  
01506 852018  
[broxburn.ps@wled.org.uk](mailto:broxburn.ps@wled.org.uk)

Carmondean Primary Knightsridge Rd West Livingston EH54 8PX  
Helen McCulloch (Acting)  
01506 432492  
carmondean.ps@wled.org.uk

Croftmalloch Primary  
via Raeburn Cres Whitburn EH47 8HQ  
Lynn Howitt 01501 740506  
01501 742007  
croftmalloch.ps@wled.org.uk

Deans Primary  
Deans Rd South, DeansLivingston EH54 8DB  
Lorraine Collins  
01506 411208[deans.ps@wled.org.uk](mailto:deans.ps@wled.org.uk)

Dechmont Infant  
Main St, DechmontBroxburn EH52 6LJ  
Lorna Brockbank  
01506 811264  
dechmontinfant.ps@wled.org.uk

Dedridge Primary  
Dedridge EastLivingston EH54 6JQ  
Jean Hutchison  
01506 412830  
dedridge.ps@wled.org.uk

East Calder Primary  
9 Langton Rd East Calder EH53 0BL  
Alice Anderson  
01506 880810eastcalder.ps@wled.org.uk

Eastertoun Primary  
13 Manse Ave, Armadale EH48 3HS  
Gerald Cowan  
01501 730462  
eastertoun.ps@wled.org.uk

Falla Hill Primary  
Harthill Rd Fauldhouse EH47 9HS  
Anita Craig  
01501 770210fallahill.ps@wled.org.uk

Greenrigg Primary  
Polkemmet Rd, Greenrigg Harthill ML7 5RF  
Iain McDermott (Acting)  
01501 751334  
greenrigg.ps@wled.org.uk

Harrysmuir Primary  
Willowbank Livingston EH54 6HN  
Susan MacKenzie  
01506 434501  
harrysmuir.ps@wled.org.uk

Holy Family RC Primary  
Glendevon Park Winchburgh EH52 6UE  
Margaret Johns  
01506 890208  
n/holyfamily.ps@wled.org.uk

Howden St Andrews RC Primary  
Kingsport Ave, Howden East Livingston EH54 6BA  
Mrs Georgina Urquart

01506 433114  
howdenstandrews.ps@wled.org.uk

Kirkhill Primary  
Rashierigg Broxburn EH52 6AW  
Anne Moir  
01506 853821  
kirkhill.ps@wled.org.uk

Kirknewton Primary  
21 Station Rd Kirknewton EH27 8DD  
Jean Fleming (Acting)  
01506 881461  
kirknewton.ps@wled.org.uk

Knightsridge Primary  
Davidson Way, Knightsridge Livingston EH54 8HG  
Joan Naysmith (Acting)  
01506 434012  
knightsridge.ps@wled.org.uk

Letham Primary  
Forth Drive, Craigshill Livingston EH54 5LZ  
Valerie Brodie  
01506 432012  
letham.ps@wled.org.uk

Linlithgow Bridge Primary  
East Mill Rd Linlithgow Bridge EH49 7PB  
Anne Corr  
01506 671428  
linlithgowbridge.ps@wled.org.uk

Linlithgow Primary  
Preston Rd , Linlithgow EH49 6HB  
David Simpson  
01506 842686  
linlithgow.ps@wled.org.uk

Livingston Village  
Primary Kirkton Rd North Livingston Village EH54 7EQ  
Jill Cameron (Acting)  
01506 429620  
livingstonvillage.ps@wled.org.uk

Longridge Primary School  
Longridge EH47 8AG  
Elsie Aitken  
01501 770208  
longridge.ps@wled.org.uk

Low Port Primary  
Blackness Rd  
Linlithgow EH49 7HZ  
Anne Cook (Acting)  
01506 842060  
lowport.ps@wled.org.uk

Meldrum Primary  
Westwood Park, Deans Livingston EH54 8NW  
Lilian Davidson  
01506 410440  
meldrum.ps@wled.org.uk

Mid Calder Primary  
Spottiswood Gdns Mid Calder EH53 0RR  
Alan Girdwood  
01506 882092  
midcalder.ps@wled.org.uk

Murrayfield Primary  
Catherine Terr Blackburn EH47 7DX  
Margaret Brown 01506 653400  
01506 636119  
murrayfield.ps@wled.org.uk

Our Lady of Lourdes RC Primary  
Hopefield Rd Blackburn EH47 7HZ  
Patricia Paterson  
01506 653103  
ourladyoflourdes.ps@wled.org.uk

Our Ladys RC Primary  
79 Main St Stoneyburn EH47 8BY  
Frances Burns  
01501 762265  
ourladys.ps@wled.org.uk

Parkhead Primary  
Harburn Rd, West Calder EH55 8AH  
Carol Gordon  
01506 871404  
parkhead.ps@wled.org.uk

Peel Primary  
Garden Pl, Elburn East Livingston EH54 6RA  
Graeme Logan  
01506 414892  
peel.ps@wled.org.uk

Polkemmet Primary  
The Avenue Whitburn EH47 0BX  
Doreen Steel  
01501 740319  
polkemmet.ps@wled.org.uk

Pumpherstons & Uphall Station Community Primary  
18 Uphall Station Rd Pumpherstons EH53 0LP  
Shameem Ali  
01506 432152  
[pumpherstonsuphallst.ps@wled.org.uk](mailto:pumpherstonsuphallst.ps@wled.org.uk)

Riverside Primary,  
Maree Walk Livingston EH54 5BP  
Margaret Leighton 01506 432248  
[riverside.ps@wled.org.uk](mailto:riverside.ps@wled.org.uk)

Seafield Primary,  
Cousland Terr , Seafield EH47 7BL  
Marjorie W Morris  
01506 652916  
[seafield.ps@wled.org.uk](mailto:seafield.ps@wled.org.uk)

Simpson Primary School,  
Leyland Road, Bathgate EH48 2SG  
Lucy MacLean  
01506 656371  
[simpson.ps@wled.org.uk](mailto:simpson.ps@wled.org.uk)

Springfield Primary  
141 Springfield Rd, Linlithgow EH49 7SN  
Linda Simpson  
01506 847452  
[springfield.ps@wled.org.uk](mailto:springfield.ps@wled.org.uk)

St Anthony's RC  
Primary South St, Armadale EH48 3EU  
James McCrory  
01501 731668  
[stanthonys.ps@wled.org.uk](mailto:stanthonys.ps@wled.org.uk)

St Columba's RC Primary,  
Philip Ave, Boghall, Bathgate EH48 1NQ  
Maureen Allan  
01506 653822  
[stcolumbas.ps@wled.org.uk](mailto:stcolumbas.ps@wled.org.uk)

St John Ogilvie RC Primary,  
Harburn Ave, Deans, Livingston EH54 8NQ  
Michael Marzella  
01506 412560  
[stjohnogilvie.ps@wled.org.uk](mailto:stjohnogilvie.ps@wled.org.uk)

St John The Baptist RC Primary,  
Lanrigg Ave, Fauldhouse EH47 9JR  
Anne Purdie  
01501 770232  
stjohnthebaptist.ps@wled.org.uk

St Josephs RC Primary (Linlithgow)  
Preston Rd  
Linlithgow EH49 6HB  
Kathleen McMahon  
01506 842578  
stjosephslinlithgow.ps@wled.org.uk

St Josephs RC Primary (Whitburn)  
Gateside Rd Whitburn EH47 ONJ  
Maureen McNaughton  
01501 740452  
stjosephswhitburn.ps@wled.org.uk

St Marys RC Primary (Bathgate)  
Whitburn Rd Bathgate EH48 2DR  
Moira Claase  
01506 652511  
stmarysbathgate.ps@wled.org.uk

St Marys RC Primary (Polbeth)  
10 Polbeth Rd, Polbeth West Calder EH55 8SR  
Frank Boles  
01506 871520  
stmaryspolbeth.ps@wled.org.uk

St Nicholas RC Primary  
West Main St Broxburn EH52 5RH  
Karen Brown  
01506 853509  
strnicholas.ps@wled.org.uk

St Ninians RC Primary  
Douglas Rise, DedridgeLivingston EH54 6JR  
Isobel McKendrick  
01506 414612  
stninians.ps@wled.org.uk

St Pauls RC Primary  
Main St East Calder EH53 0ES  
Gerry O'Brien  
01506 881665  
stpauls.ps@wled.org.uk

St Thomas RC Primary  
Church St Addiewell EH55 8PG  
Marie Moynagh  
01501 762794  
stthomas.ps@wled.org.uk

Stoneyburn Primary  
2 Main St Stoneyburn EH47 8BA  
Debbie Henry (Acting)  
01501 762253  
stoneyburn.ps@wled.org.uk

Toronto Primary  
Howden East Livingston EH54 6BN  
Pam Hamilton  
01506 431461  
toronto.ps@wled.org.uk

Torphichen Primary  
The Loan Torphichen EH48 4NF  
Rita Angus (Acting)  
01506 652246  
torphichen.ps@wled.org.uk

Uphall Primary  
Crossgreen Dr Uphall EH52 6DS  
Lesley Cameron  
01506 852516  
uphall.ps@wled.org.uk

Westfield Primary,  
Lomond View , Westfield EH48 3DE  
Rita Angus (Acting)  
01506 634019  
n/awestfield.ps@wled.org.uk

Whitdale Primary  
55a Whitdalehead Rd Whitburn EH47 8JU  
Susan Ralston (Acting)  
01501 740548  
whitdale.ps@wled.org.uk

Williamston Primary  
Bankton Lane, Murieston Livingston EH54 9DQ  
Arlene Black  
01506 415311  
williamston.ps@wled.org.uk

Winchburgh Primary  
Glendevon Park Winchburgh EH52 6UE  
Frances Rosevear  
01506 890202  
n/awinchburgh.ps@wled.org.uk

Windyknowe Primary  
Windyknowe Cres Bathgate EH48 2BT  
Rae Malcolm  
01506 652083  
windyknowe.ps@wled.org.uk

Woodmuir Primary  
Woodmuir Rd, Breich West Calder EH55 8JN  
Elsie Aitken (secondment)  
01501 770312  
woodmuir.ps@wled.org.uk

### **Secondary Schools**

Armadale Academy  
West Main St Armadale EH48 3LY  
Graham Johnstone  
01501 730601  
[armadale.ac@wled.org.uk](mailto:armadale.ac@wled.org.uk)

Bathgate Academy  
Edinburgh Rd Bathgate EH48 1LF  
Joseph Boyd  
01506 653725  
bathgate.ac@wled.org.uk

Broxburn Academy  
Cardross Rd Broxburn EH52 6AG  
Peter Reid  
01506 852521  
broxburn.ac@wled.org.uk

Deans Community High School,  
Eastwood Park Livingston EH54 8PS  
Margaret Ross  
01506 497090  
deans.chs@wled.org.uk

Inveralmond Community High School  
Willowbank, Ladywell Livingston EH54 6HN  
William Tevendale  
01506 438093  
inveralmond.chs@wled.org.uk

James Young High School  
Quentin Rise, Dedridge West Livingston EH54 6NE  
Christopher Horne  
01506 414244  
thejamesyoung.hs@wled.org.uk

Linlithgow Academy  
Braehead Rd Linlithgow EH49 6EH  
David MacKenzie  
01506 843211  
[linlithgow.ac@wled.org.uk](mailto:linlithgow.ac@wled.org.uk)

St Kentigerns RC Academy  
West Main St Blackburn EH47 7LX  
Stephen Campbell  
01506 656404  
stkentigerns.ac@wled.org.uk

St Margarets RC Academy  
Howden South Rd Livingston EH54 6AT  
James Cameron  
01506 497104  
stmargarets.ac@wled.org.uk

West Calder High School,  
Limefield, Polbeth, West Calder EH55 8QN  
Elaine Cook  
01506 871510  
westcalder.hs@wled.org.uk

Whitburn Academy,  
Shanks Rd , Whitburn EH47 0HL  
Ian Adair (Acting)  
01501 740675  
whitburn.ac@wled.org.uk

### **Education Support Resources**

Beatlie School Campus,  
The Mall, Craigshill, Livingston EH54 5EJ  
Mary Currie  
01506 777598  
beatlie@wled.org.uk

Burnhouse School , The Avenue , Whitburn EH47 0BX  
Liz Speirs / John Bell  
01501 678100  
burnhouse@wled.org.uk

Cedarbank , Cedarbank,  
Ladywell East, Livingston EH54 6DR  
Denise McPhail  
01506 442172  
cedarbank@wled.org.uk

Ogilvie School Campus,  
Ogilvie Way, Knightsridge, Livingston EH54 8HL  
Sharon Johnston  
01506 777489

n/aogilvie@wled.org.uk

Pinewood , Elm Grove , Blackburn EH47 7QX  
Adele Green  
01506 656374  
pinewood@wled.org.uk

Willowgrove House  
1/6 Willowgrove House, Livingston EH54 8LU  
Liz Speirs / John Bell  
01506 434274  
willowgrove@wled.org.uk

### **Outreach Services (Education)**

Hearing Impaired Service  
Deans PS, Deans South, Deans, Livingston, EH54 8DB  
01506 418125 Fax 01506 419814  
Carole Torrance

E.A.L. Service  
Deans CHS, Eastwood Park, Livingston, EH54 8PS  
01506 497090 Fax 01506 497025  
Gail Hargreaves

Literacy Resource

Boghall Primary School, Elizabeth Drive, Bathgate EH48 1JB  
01506 650384  
Jennifer Livingston  
Karen-Ann MacAlpine  
Technology Support  
ICT Curriculum Development Officer and SEN  
01506 777424 Fax 01506 777422

### **Outreach (Health)**

Autism Outreach  
Primary:  
Secondary: Denise McPhail 01506 442172

Language Resource

Primary: Denise McPhail  
01506 436955

New to West Lothian (SN) Outreach Service 01506 777598

Occupational Therapy Needs  
Occupational Therapy Department West Lothian NHS Trust  
01506 419666

Partnership with other Agencies

West Lothian NHS Trust 01506 419666  
West Lothian Social Work Department 01506 777333

Physiotherapy Needs  
Physiotherapy Department West Lothian NHS Trust 01506  
419666

Pre Five Home Teaching  
Kay Ryan 01506 776112

Social Emotional Behavioural Needs (SEBN)  
Primary: Sharon Johnston 01506 777450  
Secondary: Margaret Gibson 01501 678108

Technology Support  
ICT Curriculum Development Officer and ALN  
01506 777424 Fax 01506 777422

## **PSYCHOLOGICAL SERVICE**

Ogilvie House  
Ogilvie Way, Knightsridge,  
Livingston, EH54 8HL  
01506 777462 Fax 01506 777486

## **EDUCATION TRAINING & RESOURCE CENTRE**

West Lothian Education Centre  
Ogilvie House, Ogilvie Way, Livingston, EH54 8UL  
01506 777451 Fax 01506 777452  
Sheila Smith

## **ARTS UNIT**

Arts Unit  
Craigsfarm Campus, Maree Walk, Livingston, EH54 5BP  
01506 777585 Fax 01506 777590  
(vacancy)

Craigsfarm Community Development Project  
Craigsfarm Campus, Maree Walk, Livingston, EH54 5BP  
01506 777691 Fax 01506 777596  
(vacancy)

Howden Park Centre  
Howden, Livingston, EH54 6AE  
01506 433634 Fax 01506 434525

## **OUTDOOR EDUCATION**

Low Port Centre 01506 775390  
Blackness Road, Linlithgow, EH49 7HZ  
Fax: 01506 775399  
Mr George Thomson

## **SPORTS UNIT**

Sports Unit 01506 776295  
Balbardie Park, Bathgate, EH48 4LA  
Fax: 01506 776186  
Mr Charlie Raeburn

## **SPORTS CENTRES**

Bathgate Sports Centre  
Balbardie Park of Peace  
Torphichen Road  
Bathgate EH48 4LA  
William Key

Broxburn Sports Centre  
Church Street  
Broxburn  
EH52 2EL  
01506 775690  
Eric Stafford

Craigswood Sports Centre  
Craigswood, Craigshill  
Livingston EH54 5ER  
01506 775870  
William Key

East Calder Sports Centre  
28 Raw Holdings  
East Calder  
EH53 0JN  
01506 883340  
William Key

Linlithgow Leisure Centre  
McGinley Way  
Linlithgow EH49 6SQ  
01506 775440 Fax: 01506 775458  
Lynda Binnie

## SWIMMING POOLS

Armadale Swimming  
North Street  
Armadale EH48 3QB  
01501 678520

Bathgate Swimming

Fauldhouse Library Pavilion  
Main Street, Fauldhouse

Harrysmuir Bowling  
Pavilion Willowbank,  
Livingston 01506 442182  
Joe McLelland 07743 021230

Kirknewton Village Hall  
Main Street, Kirknewton  
Mrs Ewing 01506 884454  
Letting Section 01506 776008  
Letting Section 01506 776008

## HALLS

Bellsquarry Community  
Hall  
Main Street, Bellsquarry  
Mrs Piercy 01506  
410830

Breich Village Hall  
Main Street, Breich Evelyn  
Russell 01501 770727

Burgh Halls, Linlithgow  
The Cross, High Street,  
Linlithgow  
01506 842572  
Letting Section 01506  
776008

Chalmers Hall,  
Linlithgow  
Falkirk Road, Linlithgow  
Bridge 01506 842744

Longridge Village Hall  
School Lane, Longridge 01501  
770339  
Letting Section 01506 776008

Polbeth Village Hall  
Main Street, Polbeth  
01506 871034  
West Calder CC 01506 871278

Pumpherstons Institute  
Uphall Station Road,  
Pumpherstons 01506 431546  
Letting Section 01506 776008

Uphall Station Institute  
Marrfield Terrace, Uphall  
Station  
01506 432854  
Letting Section 01506 776008

## LIBRARIES

Headquarters School Libraries 01506 776334  
Based at Connolly House  
Helen Scott  
Connolly House, Hopefield Road,  
Blackburn, EH47 7HZ  
01506 776336  
Jeanette Castle

Public Reference Library  
Street Building, West Lothian College,  
Almondvale Crescent  
Livingston EH54 7EP 01506 427601  
Linda Hartley

Almondbank  
Craigshill Shopping Mall, Craigshill,  
Livingston, EH54 5EJ  
01506 777500  
Helen Dobie

Armadale  
West Main Street  
Armadale, EH48 3JB  
01501 678400  
Elizabeth Hunter

Bathgate  
Hopetoun Street Bathgate, EH48 4PD  
01506 776400  
Anne McIntosh/Margaret Armstrong  
(Job Share)

Blackridge  
Craig Inn Centre  
Blackridge, EH48 3SP  
01501 752396  
Moir McCabe

Carmondean  
Carmondean Centre  
Livingston EH54 8PT  
01506 777602  
Stephen Harris

Fauldhouse  
Lanrigg Road  
Fauldhouse EH47 9JD  
01501 772721  
Marilyn James

Linlithgow  
The Vennel  
Linlithgow EH49 7EX  
01506 775490  
Kay Ali

West Calder  
Main Street  
West Calder EH55 8BQ  
01506 772421  
Gillian Gillespie

#### PUPIL SUPPORT MANAGERS

School Name  
Armada Academy, Carol McDonald  
Bathgate Academy, Ellis McKay  
Broxburn Academy, Linda Brough  
Deans Community High School, Anne Craig  
Inveralmond Community High School, Catriona Scott  
Linlithgow Academy, Jack Laurie  
St Kentigern's Academy, David Glencourse  
St Margaret's Academy, Winifred McCall  
The James Young High School, Gillian Spence  
West Calder High School, Lisa Lorimer  
Whitburn Academy, Paula Allison

Senior Education Development Manager – Mary Rankine

Education Officer Outreach Services  
Kay Ryan

Principal Support Officer  
Alison Raeburn

Principal Psychologist  
Liz Gajjar

## Education Support Services

Lindsay House, South Bridge Street, Bathgate, EH48 1TS  
01506 776110 / 01506 776394  
mary.rankine@westlothian.gov.uk  
Mary Rankine, Senior Education Development Manager

- to secure adequate and efficient educational provision for children and young people with additional support needs (including those with additional educational needs, a disability, high achievers and those for whom English is an additional language)
- to ensure that education provided is directed to the development of the personality, talents and mental and physical abilities of the child to their fullest potential and a presumption that education will be provided in a mainstream school.
- Education support services provides a range of additional support to children and young people with additional learning needs, including:
  - o services for visually and/or hearing impaired pupils
  - o psychological services
  - o English as an additional language
  - o hospital and home teaching services
  - o support for learning teachers
  - o specialist provision for pupils with learning difficulties, social, emotional and behavioural needs or severe and complex needs

Through partnership with other agencies, there is also provision of:

- speech and language therapy
- occupational therapy
- physiotherapy
- social work

## **Family Mediation Lothian**

207 West Main Street, Whitburn EH47 0LP  
01501 749780  
Fax: 01501 745094  
fmwestlothian@btconnect.com  
lothian@familymediation.freeserve.co.uk

Family Mediation Lothian aims to prevent damage resulting from family break-up, principally emotional damage to children and young people, by:

- providing information and advice to separating parents
- working with the courts and solicitors to make mediation a ready alternative
- bringing together parents with a trained mediator to achieve agreement on future parenting
- providing centres where parents can enjoy contact with their children
- providing 'surviving the break-up' groups for recently separated people
- providing individual and group support for children

Service covers Edinburgh City, East, Mid and West Lothian.

Director: Carol Barrett  
West Lothian Area Manager: Eleanor Higgins

### **Other locations**

37 George Street  
Edinburgh  
EH2 2HN  
Tel: 0131 226 4507  
Fax: 0131 220 4324

## **Family Protection Unit**

F Division, Lothian and Borders Police  
Bathgate Police Station,  
South Bridge Street, Bathgate, EH48 1TL  
01506 652615 (Direct Dial)  
01506 652323 or  
via Divisional Headquarters 01506 431200  
Firstname.lastname@lbp.pnn.police.uk

### **The Service**

The unit is responsible for the investigation of all allegations relating to sexual offences, reported within West Lothian, reporting of youth offending and child protection issues to the Scottish Children's Reporter's Administration, liaison with victims of Domestic Abuse and appropriate support agencies, monitoring of sex offenders and investigation of reported missing persons.

### **Statutory duties:**

- Investigation of allegations relating to sexual offences
- report findings, following investigation to the Procurator Fiscal and the Scottish Children's Reporter's Administration, where appropriate
- liaise with and provide reports to the Scottish Children's Reporter's Administration regarding youth offending and child protection issues;

### **Domestic Abuse Liaison Officer:**

Anne Robertson 01506 656023

Deals with victims of Domestic Abuse to give them advice and support about criminal proceedings and other agencies that can assist.

### **Sex Offender Assessment Officers:**

Murdo Stewart and Frances Faulds  
01506 445344 – based at Livingston Police Station

Deal with the perpetrators and monitor them through the registration period, and makes risk assessments of their conduct in the community.

### **Service Structure**

Detective Inspector John McKenzie has line management responsibility for all detective officers and liaison officers based within the Family Protection Unit. Overall responsibility for the FPU lies with Detective Chief Inspector Keith Anderson.

Details of all police stations within West Lothian are contained below. Whilst FPU officers are based at Bathgate, contact can be made via any of the police station referred to below.

### **Police Stations**

Armadale

69/71 West Main Street  
Armadale EH48 3PZ  
Tel: 01501 730219

Bathgate  
South Bridge Street  
Bathgate, EH48 1TL  
01506 652323

Broxburn  
West Main Street  
Broxburn EH52 5LJ  
Tel: 01506 852121

Livingston  
Divisional Headquarters  
Civic Centre  
Howden Road South, Livingston EH54 6FF  
01506 431200

Linlithgow  
High Street  
Linlithgow EH49 7EQ  
Tel: 01506 843235

West Calder  
9 East End  
West Calder  
EH55 8RF  
01506 871218

Whitburn  
West Main Street  
Whitburn  
EH47 1LR  
01501 740222

### **First Steps Playgroup**

Beatlie School Campus, The Mall, Craigshill,  
Livingston EH54 5EJ  
01506 777883

First Steps operate a playgroup for pre-school children with special needs in the Beatlie Campus, Craigshill, Livingston. It has registered charitable status.

### **Homeaid West Lothian**

Homeaid West Lothian  
12-14 Gideon Street, Bathgate EH48 4HD  
01506 652230  
Contact: Jackie Agnew MBE  
home\_aid@btconnect.com

Recycle donated furniture for homeless and low income families and individuals at low cost

### **Service Structure**

Co-ordinator responsible to management committee

## **Home-Start West Lothian**

37a McLeod Street, Broxburn EH52 5BN  
01506 854529  
homestartwl@lineone.net

Home-Start offers a unique service. We recruit and train volunteers who are usually parents themselves to visit families at home who have at least one child under 5 and offer them informal, friendly and confidential support which can be practical and/or emotional, for example help getting the family out and/or being a 'listening ear'. Home-Start schemes are rooted in the communities they serve. They are managed locally but supported by the national organization, which offers direction, training, information and guidance to schemes and ensures consistent and quality support for parents and children wherever they are. Home-Start West Lothian's volunteer befrienders offer support to families throughout the whole of West Lothian.

### **Service Structure**

Voluntary organisation and registered charity. Each Home-Start scheme has a Management Committee who employ staff. We have one full-time Senior Co-ordinator, one part-time Coordinator and one Administration Assistant. We recruit and train volunteers to support families.

### **Staff Team**

1 Senior Co-ordinator (37hours)  
1 Co-ordinator (32 hours )  
1 Admin Assistant (25 hours)

The scheme's core funding is from West Lothian Council via the Sure Start budget. Funding for the part-time Co-ordinator's post comes from the Big Lottery via the Community Fund. Funding for the 2nd Co-ordinator's post is via a Big Lottery tapered development grant and match funding from Lloyds TSB Foundation for Scotland until October 2007 and a further grant from the Robertson Trust until October 2008.

### **Includem Hopetoun Street Hostel**

64 Hopetoun Street, Bathgate EH48 4PD

Tel: 01506 655216

Fax: 01506 655216

adele.thomson@includem.co.uk

Hopetoun St Hostel provides temporary homeless accommodation and support to four young people aged 16-22. Each tenant has a support package agreed and Includem staff work closely with case managers to ensure the young person's individual support plan is implemented.

Referrals for placement should be made through the Throughcare-Aftercare Team or Youth Housing Support Team.

#### **Structure**

The hostel is operated by Includem and is supported by funding from Social Policy Children & Families and Supporting People.

### **Kiln House**

34 Kirkfield West, Livingston Village, Livingston EH54 7BE

Tel: 01506 414807

Fax: 01506 591726

firstname.lastname@westlothian.gov.uk

Manager: Wendy Milne

Kiln House provides residential care and support to four young people aged 16-17. Each young person has a key worker and staff work closely with Practice Team colleagues and partner agencies in providing an individualised care plan which is reviewed through the LAC review process. Referrals for a placement should be made to the Resources Group which meets weekly.

#### **Structure**

The centre is part of Social Policy and is line managed by Jim Logue, Group Manager (Looked After Children)

### **Letham Young People's Centre**

Letham Road, Craigshill, Livingston EH54 5NX  
01506 777313 Fax 01506 777310  
firstname.lastname@westlothian.gov.uk  
Manager: Wendy Milne

Purpose-built in 2007, Letham Young People's Centre provides residential care and support to six young people. Each young person has a key worker and staff work closely with Practice Team colleagues and partner agencies in providing an individualised care plan which is reviewed regularly through the LAC review process. Referrals for a placement should be made to the Resources Group which meets weekly.

#### **Structure**

The centre is part of Social Policy and is line managed by Jim Logue, Group Manager (Looked After Children)

### **Livingston Family Centre**

5 Jackson Place, Eliburn, Livingston EH54 6RH  
01506 775775 Fax 01506 775779  
firstname.lastname@westlothian.gov.uk  
www.livingstonfamilycentre.org.uk  
Manager: Willie Hunter

Livingston Family Centre offers a range of assessment and support services to families with young children, including playroom-based group care, outreach support within the family home and groupwork programmes for parents. Each family has a qualified Nursery Officer as key worker and an individual care plan which is reviewed regularly.

The family centre is co-located with Eliburn Nursery Class, an annexe of Inveralmond Early Years Centre. The centre has its own health visitor available on-site part-week and receives visiting support from community health and other agencies to provide a multi-agency approach. The centre also has dedicated Special Care Nursery Officers for children who require additional support.

The centre serve the east side of West Lothian and referrals for a service should be made to the Early Years Services Group, administered by Sure Start.

The Early Years Outreach Service, serving all of West Lothian, operates from the centre.

#### **Structure**

The centre is part of Social Policy and is line managed by Rosemary Howe, Group Manager (Specialist Services)

## Looked After Children Team

Strathbrock Patnership Centre  
189a West Main Street, Broxburn EH52 5LH  
firstname.lastname@westlothian.gov.uk

The Looked After Children Team comprises a Senior Educational Psychologist, 3 outreach teachers for primary and secondary pupils, Children's Rights Officer, Young Person's Development Worker and LAC Nurse. The team provides a range of support to frontline providers of services to looked after children.

The Young Person's Development Worker oversees the Youth Inclusion Project and PACE (Physical Activity for Confidence and Esteem) project.

### Contacts:

Snr Educational Psychologist Aicha Reid 01506 777466  
HYS Development Worker Post Vacant 01506 777329  
YP Development Worker AlaN Kidd 01506 777653  
LAC Nurse Avril Gardner 01506 777356  
LAC Outreach Teachers Caroline Meagher 01506 777345

### Structure

The LAC team sits within the Social Policy structure which provides links to the professional line management within each agency.

## Lothian Autistic Society

66A Newhaven Road, Edinburgh EH6 5QB  
0131 554 9362  
office@lothianautistic.org

Providing advice and support to families affected by autism spectrum condition. Services operating in West Lothian area include flexible respite scheme and play scheme in the Easter and summer holidays.

### Service Structure

Board of directors. Management committee. Development manager responsible for managing all aspects of society business on a day-to-day basis.

## **NCH Scotland**

Gilmerton Road Project,  
408 Gilmerton Road,  
Edinburgh EH17 7JH  
0131 672 1702

Provision of the following services in partnership with social work and health services within Lothian:

- short breaks
- outreach
- assessment
- emergency provision
- psychological services (for families affected by learning disabilities)

Referrals received from West Lothian.

NCH is a national organisation with around 500 projects, covering a range of family-related services. Gilmerton Road is one of these. NCH also has overseas projects. NCH has no offices in West Lothian.

Other offices / locations

NCH Scotland (Head Office for Scotland)  
17 Newton Place  
Glasgow  
G3 7PY  
0141 332 4041

## **NHS Lothian - West Lothian CHCP Children's Services**

West Lothian Civic Centre, 1<sup>st</sup> Floor South,  
Howden Road South, Livingston EH54 6FF  
Gill.cottrell@wlt.scot.nhs.uk

Provision of integrated Children's and Young Peoples Services between Primary Care, Community and acute/secondary care services for the population of West Lothian

### **Service Structure**

Children's and Young People's Services are provided within Health Centres, Schools, other community settings, Children's Ward and out patient departments in St. John's Hospital and include the following services

- Acute Paediatrics
- Child Adolescent Mental Health Services
- Child Development Centre
- Child and Family Psychiatry
- Community Child Health
- Community Children's Nurses
- GPs and Primary Health Care Teams
- Health Visiting Services
- Obstetrics
- Psychology
- School Health – Main Stream and Special Schools
- Special Care Baby Unit
- Allied Health Professionals – Physiotherapists, Occupational Therapists, Speech Therapists, Podiatrists and Dieticians provide services to children within the hospital, community, school and home setting.

### **Responsibilities**

- Health and Wellbeing for all Children and Young People within West Lothian
- Promotion of Health and Prevention of illness
- Provision of health care services to children, young people and their families
- Primary, Community and Secondary care
- Child Health Surveillance Programme (pre school and school)
- Immunisation Programmes (pre school and school)
- School Health Service
- Children with Disability
- Child Protection
- Looked After and Accommodated Children

Within health services we aim to enhance the provision of seamless integrated services across the acute/community interface. There is a strong history of effective interagency working with other statutory and voluntary Agencies which are strengthened by the development of West Lothian Community Health & Care Partnership.

### **Details of other offices / locations:**

Community Child Health Dept  
St. John's Hospital  
School Health  
01506 524403  
Pre-School Administration  
01506 524424/27  
Office Manager  
Margaret Somerville  
01506 524405

Consultant Paediatrician  
Dr. Helen Hammond  
01506 524412

Clinical Medical Officer  
Dr. Joan Ritchie, Snr  
01506 524425

Community Children's Nurses  
St. John's Hospital  
01506 524382

Susan McGill  
Paediatric Nurse Manager  
St Johns Hospital  
01506 524384

Louise Jarman  
Co-ordinator  
Child Development Centre  
Beatlie Campus, Craigshill, Livingston  
01506 777584

Sister Lynn Haddow  
Children's Ward  
St. John's Hospital  
01506 524398

Dr. Susie Hume  
Dr. Leonie Boeing  
Consultant Psychiatrists  
Child and Family Psychiatry  
St. John's Hospital  
01506 523785

Phil Harrison  
Head of Department  
Clinical Psychology  
St. John's Hospital  
01506 523799

#### GP Practices Within West Lothian

#### SOUTH-EAST LOCALITY

##### Ash Grove Medical Practice

Health Centre, Ash Grove Blackburn EH47 7LL  
08444 770 954

Carmondean Medical Group Health Centre, Carmondean  
Centre Livingston EH54 8PY  
08444 77 3155

##### Deans and Elburn Medical Practice

Health Centre Carmondean Centre  
Livingston EH54 8PY  
08444 773144

##### Dr. Shah

Health Centre, Carmondean Centre  
Livingston EH54 8PY  
08444 773166

##### Dr. Handley and Partners

Health Centre, The Mall  
Craigshill, Livingston EH54 5DY  
01506 432621

##### Dedridge Medical Practice

Health Centre, Nigel Rise Livingston EH54 6QQ  
01506 414586

##### East Calder Medical Practice

147 Main Street East Calder EH53 OEW  
01506 882882

##### Howden Medical Practice

Health Centre, Howden Livingston EH56 6TP  
01506 423800

##### Murieston Health Centre

Health Centre, Hamilton Square Livingston  
01506 461464

##### West Calder Medical Practice

Health Centre, Stewart Street West Calder EH55 8HB  
01506 871359

## GP Practices Within West Lothian

### NORTH-WEST LOCALITY

#### Armadale Group Practice

18 North Street Armadale EH48 3QB  
01501 730432

#### Newlands Medical Practice

Primary Care Centre, Whitburn Road  
Bathgate EH48 2SS  
01506 655155

#### Simpson Medical Practice Primary Care Centre,

Whitburn Road Bathgate EH48 2SS  
01506 654444

#### Kingsgate Medical Practice Primary Care Centre,

Whitburn Road Bathgate EH48 2SS  
01506 653134

#### Dr. Wood and Partners

Strathbrock Partnership Centre  
189a West Main Street, Broxburn EH52 5LH  
01506 771800

#### Dr. Gunn and Partners

Strathbrock Partnership Centre  
189a West Main Street, Broxburn EH52 5LH  
01506 771771

#### Dr. Ferguson and Partners

Strathbrock Partnership Centre  
189a West Main Street, Broxburn  
EH52 5LH 01506 771700

#### Blackridge Health Centre Health Centre,

Fleming Place Blackridge EH48 3SS  
01501 751238

#### Dr. Ritchie and Dr. Jones

Health Centre, Blackfaulds Place Fauldhouse EH47 9AS  
01501 770282

#### Dr. Milne and Partners

Health Centre, Main Street Stoneyburn EH47 8BY  
01501 762515

#### Whitburn Medical Practice

Health Centre, Weavers Lane Whitburn EH47 OQU  
01501 740297

[Linlithgow Medical Group](#)

Health Centre, High Street Linlithgow EH49 7ER  
01506 670027

[Linlithgow Family Practice Health Centre,](#)

High Street Linlithgow EH49 7ER  
01506 670036

[Winchburgh GP Practice](#)

Health Centre, Niddry Road Winchburgh EH52 6RX  
01506 890737

[Health Centres with Attached Health Visitors](#)

[SOUTH-EAST LOCALITY](#)

Blackburn Ash Grove

01506 654965

Alison Baxter

Carol Denholm

Carmondean, Livingston

08444 773186

Bernadette McGuigan

Emma Beattie

Gail Connell

Nancy Yuille

Jane Nicholson

Craigshill, Livingston

01506 432621

Lesley Weir

Trudi Starritt

Alison Scholes

Helen Boxall

Dedridge, Livingston

01506 414586

Marion Brown

Linda Wilson

Lynne Cooper

Liz Marks

East Calder Main Street

01506 880582

Elsbeth Neilson

Morag Park

Margo Barr

Howden, Livingston

01506 423800

Irene Meldrum

Lesley Hunt

Jackie Hilton

Murieston, Livingston  
01506 463347  
Brenda Jones-Murty

Polbeth Clinic, Polbeth Road  
01506 871274  
Liz Lavelle

West Calder Stewart Street  
01506 871359  
Carole Middleton

Inveralmond Early Years Centre  
01506 441907  
Norma Martin

Knightsridge Early Years Centre  
01506 444970 ext 228  
Norma Martin

#### NORTH-WEST LOCALITY

Armadale North Street  
01501 730339  
Gerry Connor  
Dana Crawford  
Mia Graham

Bathgate Whitburn Road  
01506 630771/2  
Shona Russell  
Louise Boyd  
Lynn Smith

Blackridge Fleming Place  
01501 654965  
Mia Graham

Strathbrock Partnership Centre  
01506 771830  
Maggie McNeil  
Mags Woodward  
Jill Douglas  
Heather Smith

Fauldhouse Blackfaulds Place  
01501 772038  
George Hamill  
Karen McKeown

Linlithgow High Stree  
t01506 670044  
Judy Rankin  
Lindsay Reagan  
Elaine Kirk

Stoneyburn Main Street  
01501 762515  
Joan Watson

Whitburn Weavers Lane  
01501 740719  
Jean Lugton  
Alison Shaw  
Adrienne Campbell

Winchburgh Niddry Road  
01506 891078  
Aileen Morrison  
Margaret Morris

Whitdale Family Centre  
01501 744380  
Sharon McCourtney

Other health professionals providing services to children  
and young people within the above health centres include

- Community Midwives
- Community Psychiatric Nurses
- Treatment Room Nurses
- District Nurses
- Practice Nurses
  
- Allied Health Professionals
  - o Physiotherapists
  - o Speech and Language Therapists
  - o Dietician
  - o Podiatrists

School Nurses within West Lothian  
School Nurse Base Howden Health Centre  
01506 423800

Team Leaders 01506 423800

Marilyn Woodhead  
Lorraine McLean

Armadale Academy  
Beth Lockhart  
01506 423800

Bathgate Academy  
Dorothy Fleming  
01506 423800

Broxburn Academy  
Jackie Baggott  
01506 423800

Deans Community High School  
Rosie Small  
01506 423800

Inveralmond Community High School  
Vicki Jones  
01506 423800

James Young High School  
Lorraine McLean  
01506 423800

Linlithgow Academy  
Moyra Rodgers01506 423800

St. Kentigern's Academy  
Marie MacNamee  
01506 423800

St. Margaret's Academy  
Nighean Hanna01506 423800

West Calder High School  
Marie Watt  
01506 423800

Whitburn Academy  
Marilyn Woodhead01506 423800

## Specialist Provision

Nurses in Special Schools are based in Beatlie Campus and Pinewood School.

Isobel Graham is the Lead Nurse for Children with Disability -07709 400 758

Beatlie Campus  
Craigshill, Livingston,  
Isobel Graham  
Frances Turnbull  
Janet Cormack  
01506 777598

Cedarbank School  
Cedarbank, Livingston  
Isobel Graham  
01506 442172

Pinewood School  
Elm Grove, Blackburn  
Isobel Graham  
Irene McLean  
01506 656374

## **Open Door Accommodation Project**

Unit U, Kirkton Business Centre  
Kirk Lane, Livingston Village, Livingston EH54 7AY  
Tel: 01506 203478 Fax: 01506 203184  
Email: susan.harcourt@odap.org.uk

### **Hostel**

- Emergency accommodation for a period of up to 8 weeks in a 10-bedded residential unit for young people aged 16-21 years.
- The hostel is staffed 24 hours a day. Young people are allocated a key-worker who will work with them, in conjunction with a worker from the Young Adults Service Team (W.L.C.) to assess their emotional and practical needs and then work towards the goals of the resulting support plan.
- Help to access appropriate move-on accommodation, finding employment, training, education, as well as help and 'signposting' with a range of other issues. Help to access Health Services.

### **Supported Flats**

- Supported accommodation living within the community, for single people between the ages of 16-21.
- Support, advice and advocacy.
- Help with access to longer term housing, finding employment, Health Services, training or education or to pursue other interests, as well as help and 'signposting' with a range of other issues.
- An allocated support worker, who will work towards a support plan.

### **Tenancy Support**

- Flexible, practical and emotional support in the early stages of your tenancy, for young people aged 16-25.
- Help setting up your home.
- Help in maintaining your home.
- Support to help you to live independently in your home.
- Help to access appropriate employment, training, education, Health Services or to pursue other interests, as well as help and 'signposting' with a range of other issues.

### **Service Structure**

- Director (vacant) responsible to voluntary Management Committee
- Operational Manager (Susan Harcourt) - responsible to Director
- Tenancy Support Manager (Audrey Heron) - responsible to Operational Manager
- Supported Flats Manager (Aileen Willmott) - responsible to Operational Manager
- Hostel Manager (Liz Wilkinson) - responsible to Operational Manager

## **Locations**

Open Door Supported Flats - Unit U, Kirkton Business  
Centre Kirk Lane, Livingston Village, Livingston EH54 7AY  
Tel: 01506 203478 Fax: 01506 203184  
aileen.willmott@odap.org.uk

Open Door Tenancy Support - Unit H, Kirkton Business  
Centre Kirk Lane, Livingston Village, Livingston EH54 7AY  
Tel: 01506 203478 Fax: 01506 203184  
audrey.heron@odap.org.uk

Open Door Hostel - 7-12 Adelaide Street  
Craigshill, Livingston EH54 5HG  
Tel: 01506 430221 Fax: 01506 431185  
liz.wilkinson@odap.org.uk

## Residential Schools and Specialist Services

West Lothian Council endeavours to ensure that all young people are educated locally. It is necessary, however, for some young people with complex care and education needs to be placed in a residential school and this list offers a brief overview and contact details of the schools used.

Decisions to place a child in residential school are made by senior management through the Resources Group and the Senior Officers Review Group (SORG), depending on the circumstances and needs of each child.

## RESIDENTIAL SCHOOLS

### BALLIKINRAIN SCHOOL

Fintry Road, Balfron G63 0LL  
Tel: 01360 440244  
Fax 01360 440946  
chrismcnaught@ballikinrain.org

### BALNACRAIG SCHOOL

Fairmount Terrace  
Perth PH2 7AR  
Tel: 01738 636456  
Fax: 01738 441863  
admin@balnacraig.net  
Manager: Ewen Matthew

### CAMPHILL SCHOOL

Murtle Estate  
Aberdeen AB15 9EP  
Tel: 01224 867935  
Manager: Manuela Costa Vincent

### DALDORCH HOUSE SCHOOL

Sorn Road  
Catrine KA5 6NA  
Tel: 01290 551666  
Fax: 01290 335599  
janistoy@nas.org.uk  
Manager: Janis Toy

### DONALDSON'S COLLEGE

Edinburgh EH12 5JJ  
Tel: 0131 337 9911

### FALKLAND HOUSE SCHOOL

Falkland KY15 7AE  
01337 857268 davelaing@  
falklandhouseschool.org

#### GEILSLAND SCHOOL

Gateside Road  
Beith KA15 1HD  
Tel: 01505 504044  
Fax: 01505 502635  
geilsland@crossreach.org.uk Manager- Chris McNaught

#### GOOD SHEPHERD CENTRE

Greenock Road  
Bishopton PA7 5PF  
01505 862 814

#### HARMENY SCHOOL

Mansfield Road  
Balerno EH14 7JY  
0131 449 3938  
0131 449 7121  
admin@harmeny.org.uk Manager: Peter Doran

#### HILSIDE SCHOOL

3 Main Street  
Aberdour KY3 ORH  
01383 860731  
01383 860731  
Smith\_a@hillsideschool.co.uk Manager- Michael  
Greenshields

#### KIBBLE EDUCATION AND CARE CENTRE

1 Goudie Street  
Paisley PA3 2LH  
0141 889 0044  
Graham.bell@kibble.org Manager: Graham Bell

#### LINN MOOR SCHOOL

Aberdeen AB14 OPJ  
01224 732246  
01224 735261  
Sharon.Napier@vsa.org.uk Manager: Sharon Napier

#### MOORE HOUSE CARE AND EDUCATION

21 Edinburgh Road,  
Bathgate EH48 1EX 01506 652312  
01506 652312  
Manager: Pat Sheridan

#### NERSTON RESIDENTIAL SCHOOL

Nerston Village East Kilbride G74 4PD  
01355 279201355

### NEW SCHOOL BUTTERSTONE

Butterstone  
Dunkeld PH8 0HJ  
01350 724216  
01350 724283  
Manager: Andrew Wilson

New Struan School  
Bradbury CampusAlloa  
FK10 1NP  
01259 222000  
01259 724239  
Taylor@autism-in-scotland.org.ukManager: Cathrine Strip

### OAKBANK SCHOOL

Mid Stocket Road,  
Aberdeen  
AB15 5XP  
01224 313347  
01224 312017  
Linda.Gerrard@oakbank.sch.ukManager: Jane Arrowsmith

### OCHIL TOWER SCHOOL

140 High Street,  
Auchterarder  
PH3 1AD  
01764 662 416  
01764 662416  
office@ochiltowerschool.org.uk  
Manager: Hilary Ruprecht

### PARKVIEW SCHOOL

309 Blackness Road.  
Dundee  
DD2 1SH  
01382 667903  
office@parkview-school.co.uk  
Manager: Ian Scanlin

### ROYAL BLIND SCHOOL

Canaan Campus43-45 Canaan Lane  
EdinburghEH10 4SG  
0131 446 3120

#### ROYAL BLIND SCHOOL

Craigmillar Park16 Craigmillar ParkEdinburghEH16 5PS  
0131 667 1100  
office@royalblindschool.org.uk

#### SEAMAB SCHOOL

Rumbling BridgeKinross  
KY13 OPT  
01577840307  
Manager: Anne Anderson

#### SEAFIELD SCHOOL

Ardrossan  
01294 470355  
Seafield.school@quarriers.co.uk  
Manager: Eddie McCaffrey

#### SNOWDON SCHOOL

31 Spittal StreetStirlingFK8 1DU  
01786 473449  
01786 470383  
Matthewssnowdon@aol.comManager: Graham Matthews

#### SPRINGBOIG ST JOHN'S SCHOOL

1190 Edinburgh RoadGlasgowG33 4EH  
0141 774 9791  
Bfitzgerald@sjsschool.co.uk  
Manager: William Fitzgerald

#### ST PHILLIPS SCHOOL

Plains  
Airdrie ML6 7SF  
01236 755637  
Paddy.Hanrahan@cora.org.ukManager: Patrick Hanrahan

#### STANMORE HOUSE SCHOOL

Stanmore House  
Lanark  
ML11 7RR  
01555 665041  
01555 665480

#### STARLEY HALL SCHOOL

Burntisland KY3 0AG  
01383 860314  
01383 860956  
pb@starleyhallschool.co.ukManager: Philip Barton

**SPARK OF GENIUS**

Riverside House  
Newmilns  
North AyrshireKA16 9BU

**SPARK OF GENIUS**

North Lodge HouseAdamton Estate  
Monkton  
KA9 2SQ

**SPARK OF GENIUS**

Davidson Home and Farm  
Davidshill Farm  
BY DalryKA24 4JD

**RESIDENTIAL RESOURCES AND  
SPECIALIST UNITS**

**Carolina Trust**

Carolina House Trust  
Dundee  
DD1 4LS  
01382 202029

**Care Visions**

Lockerbie  
DG11 2JL  
01576 204777

**Clannalba**

Edinburgh Road BiggarML11 6HP  
08453009272

**Closeburn Centre**

Closeburn Thornhill  
DG3 5HP  
01848 331352

**Frontline Response Residential  
Service**

35 George Street Dumfries DG1 1EA  
01387 252254  
01387 262264

**Gladstone Child Care Ltd**

Gladstone Cottage Thornton  
KY1 4DP  
01592 775774

[NCH Scotland Gilmerton Project](#)

Gilmerton Road  
Edinburgh EH17 7JH0131 672 1702  
Barbara.wright@nch.org.uk  
Manager: Barbara Wright

[Seaview Children's Unit](#)

Seaview House  
Edinburgh EH15 2LT0131 669 7490  
Southfield  
Southfield House  
Falkirk  
FK1 3BB  
01324 851336  
01324 850116  
enquiries@southfieldhcs.com  
Manager: Anita Thomson

[Strathallan-Slamannan](#)

Falkirk  
FK1 3BB  
01324 851110  
01324 850800  
enquiries@southfieldhcs.com  
Manager: Caroline Shephard

[Sycamore Services](#)

103 Veronica Crescent  
Kirkcaldy01592 592123

[Sycamore Services](#)

Bellyeoman Dunfermline

[Sycamore Services](#)

Cedar  
16 Cedar Avenue  
KirkcaldyKY1 2LP  
01592 592122

## SECURE ACCOMMODATION

### Edinburgh Secure Services

39 Howdenhall Road  
Edinburgh EH16 6PG  
0131 664 8488  
Frank.Phelan@howdenhall.edin.sch.uk  
Manager: Frank Phelan

### Good Shepherd Secure Unit

Greenock Road  
Bishopton PA7 5PF  
01505 864500  
01505 864167

### Rossie Secure Accommodation Services

Montrose  
DD10 9TW  
01674 820204  
Richard.murray@rossieadmin.org.uk  
Manager: Richard Murray

### St Phillips Secure Unit

Main Street  
Plains  
Airdrie  
ML6 7SF  
01236 439200

### The Elms Close Support

Dundee DD2 2RT  
01382 36730  
01382 436742  
Alexis.Fitzgerald@dundeecity.gov.uk  
Manager: Alexis Fitzgerald

### Kibble Safe Centre

Goudie Street  
Paisley PA3 2LG  
0141 889 0044  
0141 887 6694

### St Mary's Kenmure

St Mary's Road Bishopbriggs G64 2EH  
0141 586 1200  
Nsharp@stmaryskemure.org.uk  
Manager: Neil Sharpe

### **Reviewing Officers Team**

Strathbrock Partnership Centre, 189a West Main Street  
Broxburn EH52 5LH  
firstname.lastname@westlothian.gov.uk

Reviewing Officers provide independent administration and chairing of LAC reviews and Child Protection Case Conferences. They are:

Carol Donnachie 01506 777120  
Anne Thomson 01506 777338  
Katy Potts 01506 773802

### **Structure**

The Reviewing Officers Group is part of Social Policy.

### **Save the Children**

2nd floor, Haymarket House  
8 Clifton Terrace, Edinburgh EH12 5DR  
0131 527 8222  
j.sperber@savethechildren.org.uk

In addition to its direct work with children and young people, Save the Children in Scotland offers a range of training sessions for voluntary agencies, local councils, schools (teachers) and university courses for education and social work. These courses are described in a series of Training Folders available from Save the Children. The courses are:

- Children's Rights,
- Children's Rights in a wider context of Human Rights,
- Promoting Participation in Children's Services and
- Training on re:action Consultation Toolkit.

In addition to this, new courses include a one-day generic training course in equality and a training based on the publication 'Spice It Up', which offers tools and techniques for youth participation and consultation.

### **Service Structure**

Save the Children does not do any long term work with children and young people in West Lothian. However, training courses are available to staff in West Lothian.

### **Scottish Adoption Association**

161 Constitution Street, Edinburgh EH6 7AD

0131 553 5060

info@scottishadoption.org

www.scottishadoption.org

We are a registered adoption agency providing information, counselling and support to anyone who has adopted, has been adopted or is interested in adoption.

Services include:

- recruiting, preparing and supporting adoptive parents and permanent foster families
- confidential counselling, information, advice and support to adopted adults
- information, counselling and support to anyone considering adoption for their child or expected baby and to birth parents of children adopted

#### **Service Structure**

Services are generally available to people living in the Lothians (or within 60 miles of Edinburgh for prospective adoptive parents). There are no offices in West Lothian.

### **Scottish Children's Reporter Administration**

West Lothian Civic Centre, Ground Floor South

Howden Road South, Livingston Eh54 6FF

01506 632741

Children and young people can be referred to the Reporter by anyone who has concerns for the child's safety, welfare or behaviour. The Reporter has a legal duty to consider the referral and decide if a children's hearing is required. The children's hearing will decide if a legal order (a supervision requirement) should be made to assist the child.

#### **Service Structure**

The Authority Reporter manages the service for West Lothian, which is part of the East Region of the national administration. Individual Reporters in West Lothian deal with referrals arising in a particular geographical area.

## **Scottish Childminding Association (SCMA)**

7 Melville Terrace, Stirling FK8 2ND  
01786 445377 Fax 01786 449062  
information@childminding.org  
www.childminding.org

Scottish Childminding Association (SCMA) promotes childminding as a quality childcare service, through reaching our Vision and Key Priorities for childminding. These are:

- Raising the Profile of Childminding and the Work of the Association
- Improving the Quality of Childminding
- Recruiting and Retaining Quality Childminders

### **Service Structure**

SCMA national staff operate from our Head Office in Stirling; the Chief Executive, Director of Childminding Development and the Childminding Practice Development Team are based there. Head Office also houses three main departments: Project Services, Strategic Services and Marketing Services. These departments serve SCMA members and provide support to over 40 members of Project Staff and our Childminding Development Officers.

The nationwide HELpline (open Monday to Friday 10.00am – 4.00pm, on 01786 449063) is operated by fully trained staff from Head Office.

## **Scottish Pre-school Playgroup Association**

SPPA Centre, 45 Finnieston Street, Glasgow G3 8JU  
0141 221 4148  
[www.sppa.org.uk](http://www.sppa.org.uk)

The SPPA delivers support and guidance services to providers of pre-school education and childcare services, including all-day care groups, playgroups, parent and toddler groups and under-fives groups. Through membership, these groups access a variety of services including insurance, publications and advice on pre-school issues.

SPPA has a forty year track record of working with children and families, encompassing many of the most disadvantaged groups in Scotland, including families on low income, ethnic minority families and families affected by social or rural isolation. We work closely with parents, early years providers, the Scottish Government, regulators, local authorities and early education and childcare settings. We represent the interests of voluntary sector community based settings, providing input to national and local policy consultations and working groups.

### **Structure**

An elected Board of Directors, made up of volunteers from a range of different backgrounds, determines the policy on which SPPA operates and governs the operations of the organisation.

West Lothian is covered by the SPPA's Glasgow office at 111 Union Street, Glasgow G1 3TA, telephone 0141 227 3922.

## Signpost

Beatlie School Campus, Craigshill, Livingston, EH54 5EJ  
Helpline: 01506 431 123  
Office: 01506 431133  
enquiries@signpost-online.co.uk  
www.signpost-online.co.uk

Signpost is a voluntary organisation (registered charity SCV32398) which offers information and support to families of young people (birth to 18 approx) who have additional support needs.

We offer a helpline, drop-in office, regular newsletter and website, a well-stocked library for parents and professionals as well as individually tailored information for enquirers. Open to families, carers and professionals who support them.

A 'one-stop shop' so that people do not have to phone around many different agencies.

Staff discuss and identify the needs of the whole family then put them in touch with the most appropriate support.

The majority of staff members are also parents of a child with special needs so families appreciate our understanding of their situation.

Informal emotional support is also offered.

Office hours:  
Monday 9.30am - 4.00pm  
Tues/Wed 9.00am - 5.00pm  
Thursday 9.00am - 3.30pm  
Friday 9.00am - 1.00pm

We have no other offices in West Lothian.

### **Social Care Emergency Team (SCET)**

Suite 11, West Lothian House  
Almondvale Boulevard, Livingston EH54  
01506 777401 / 02 Fax 01506 777404  
Emergency Services Manager: Lyn McLean

SCET offers a full range of social work services outwith office hours.

### **Service Structure**

The service is part of Social Policy and is line managed by Rosemary Howe, Group Manager (Specialist Services)

## **St. Andrew's Children's Society**

7 John's Place, Edinburgh EH6 7EL

0131 454 3370

info@standrews-children.org.uk

www.standrews-children.org.uk

St Andrew's Children's Society is a voluntary adoption agency based in Edinburgh and operating within a 60 mile radius of the city. We provide permanent and temporary homes through Fostering and Adoption for children from all sections of society irrespective their of religious, ethnic and cultural backgrounds.

**ADOPTION** - We place children with adoptive families when it is clear that they can not be cared for by their birth families. These children range in age from 0 to about 10 years of age.

**FOSTER CARE** - There are many children for whom adoption may not be the plan but who need to be cared for by families other than their birth families. This could be for short periods in order to see if a child could return to their birth family or it could be until the child becomes an adult.

**RESPITE FOSTER CARE** - We have approved Respite Carers who take children into their homes at regular intervals to give them and their families a break.

**POST-ADOPTION COUNSELLING** - Many of the adoptive families we place children with require ongoing contact and support. We also have regular contact from adults who were adopted as children and want to talk about their adoptions or to find out more about the circumstances of their adoption and may even wish to trace birth family relatives. A number of birth parents and birth siblings contact us to enquire about a relative who was adopted and, although limited in what we can do for such people, we can offer an understanding and empathy in our counselling work with them.

**PREGNANCY COUNSELLING** - The focus on this counselling work is to help pregnant women consider the best course of action for them and their child.

### **Service Structure**

President: Cardinal Keith O'Brien

Chairperson: Maureen McEvoy

Director: Stephen Small

Service Manager: Charlie Egan

## **Sure Start**

Unit G, Kirkton Business Centre, 1 Kirk Lane  
Livingston Village EH54 7AY  
01506 775836 Fax 772839  
surestart@westlothian.gov.uk  
www.wlcsurestart.org.uk  
Manager: Paula Huddart

The aim of Sure Start is to give very young children (from prebirth to 3 years) the best possible start in life by working closely with parents and health, voluntary and local authority services to provide a cohesive service to parent and child in a nonstigmatising way.

### **Services offered:**

- local groups which aim to improve parent-child interaction through play and provide advice and support to parents in furthering children's development
- group work for those at risk of social exclusion, through e.g. mental or physical ill health, domestic violence, drug or alcohol misuse, minority groups and looked after children
- individual support to parents to enable them to develop parenting skills and to access other support services
- career development advice for parents

### **Service Structure**

Sure Start is part of Social Policy and is line managed by Rosemary Howe, Group Manager (Specialist Services)

## Throughcare-Aftercare Team

Lomond House, Beveridge Square

Livingston EH54

Tel: 01506 773720

Fax: 01506 773761

firstname.lastname@westlothian.gov.uk

Manager: JJ Walsh

The Throughcare Aftercare Team offers support and advice to all looked after young people aged 15–20 years in planning for their future.

Throughcare is the support offered to looked after young people, either living with family or in a residential or foster care placement. This may include:

- understanding what young people need and want
- health & well-being
- education, training & employment
- getting on with others
- having fun, hobbies and interests
- understanding & dealing with problems
- practical skills like cooking & budgeting
- making mistakes and learning from them

Aftercare is the support offered from the whole Local Authority when young people are no longer Looked After. Aftercare is offered if young people were looked after when reaching school leaving age. We have a duty to offer support up until the young person's 19th birthday, and, if needed, further support can be offered until your 21st birthday.

### **Service Structure**

TCAC is part of Social Policy and is line managed by Jim Logue, Group Manager (Looked After Children) who also serves as Lead Officer: Throughcare-Aftercare.

## **Victim Support West Lothian**

Unit 15-16 Waverly Street Industrial Estate  
Bathgate EH48 4HY  
Tel & Fax: 01506 635050  
vswl@btconnect.com

Victim Support is a voluntary organisation providing a free, confidential and independent service to all victims of reported and unreported crime and those affected by crime.

- Emotional support
  - Practical help
  - Information on the Criminal Justice System
  - Support at court
  - Free assistance with Criminal Injuries Compensation claims and information on other sources of help.
- Our services can be provided by means of a home visit, telephone contact or an office appointment.

### **Service Structure**

Victim Support West Lothian is a voluntary organisation run by an Area Management Committee. It is part of a National Organisation, affiliated to Victim Support Scotland. The area office is staffed by a part-time Area Co-ordinator plus a part-time Administrator.

The core hours are Monday - Friday 10.00am to 2.00pm and the frontline services are provided by a trained team of dedicated volunteers.

### **Voluntary Sector Gateway**

36-40 North Bridge Street, Bathgate EH48 4PP  
01506 650111  
info@vawl.org.uk

The organisation exists to provide support to the local voluntary sector.

### **Service Structure**

The service is based in Bathgate with outreach throughout West Lothian.

### **Voluntary Sector Overview**

In Scotland there are an estimated 50,000 voluntary organisations providing a wide range of services to a diverse client group and has an estimated income of over £2.62 billion annually which equates to 1.2 % of the annual turnover of the Scottish Economy. There has been increasing recognition of the strategic value of the voluntary sector not only as providers of services but also as a force for economic growth and social inclusion. The commitment of the Scottish Parliament to the value of the sector was underlined in February 2004 by the launch of the Scottish Compact which underpins the relationship between the Scottish Executive and the sector.

The West Lothian Voluntary Sector provides as diverse and vibrant a picture as the national perspective. There is in-excess of 1,800 voluntary organisations in operation in West Lothian ranging from the small volunteer run group to large organisations delivering services which contribute both directly and indirectly to the local and national policy framework. Collectively the local sector has an income of in excess of £30 million per annum.

The sector locally has a key role to play in the following:

- Providing the first point of contact
- Service provider
- Referrer to mainstream services
- Key partner

The West Lothian organisations provide a diverse range of services to all parts of society including:

- Anti-poverty initiatives
- Children's Services
- Training
- Community Economic Development
- Counselling
- Environmental Initiatives
- ICT Training
- Mediation
- Regeneration
- Provision of information and advice
- Services for older people
- Services for people with disabilities
- Specialist support
- Training for Work
- Promotion of Social Inclusion

The sector has a key role to play in cross-sectoral working and cross-agency collaboration to respond to the complex needs of society, which often cannot be compartmentalised.

## **West Lothian Community Health and Care Partnership (CHCP)**

West Lothian Civic Centre, 1<sup>st</sup> Floor South,  
Howden Road South, Livingston EH54 6FF  
01506 281008

West Lothian Community Health and Care Partnership was established in April 2005 to bring together a wide range of Health and Council services including children's services, community care, personal care, residential care, health improvement/promotion, continuing care, mental health, general practitioners, dentists, opticians, pharmacists, district nursing, learning and physical disabilities and health visiting.

The vision of the West Lothian CHCP is to develop an organisation that will further enhance and develop the delivery of integrated health and social care services to the people of West Lothian. The CHCP will operate for an initial two years and will be subject to independent evaluation and formal agreement to continue within this period.

### **Service Structure**

The work of the CHCP is governed by the Partnership Board which is made up of

Theresa Douglas (Chair) NHS Lothian  
Jane Houston (Partnership rep) NHS Lothian  
Robin Burley NHS Lothian  
Dr Mike Boyle NHS Lothian  
Councillor Ellen Glass West Lothian Council  
Councillor John Cochrane West Lothian Council  
Councillor Janet Campbell West Lothian Council  
Councillor Jim McGinty West Lothian Council

The CHCP Senior Management Team is made up of

Jim Forrest Director  
Ian Quigley Head of Council Services  
Gill Cottrell Chief Nurse  
Dr James Hendry Acting Clinical Director  
Robert Naysmith Clinical Director (SPCDS)

### **West Lothian Drug & Alcohol Service**

43 Adelaide Street, Craigshill, Livingston, EH54 5HQ  
01506 430225  
enquiries@wldas.org

#### **Education Service**

Delivers sessions on drugs, alcohol, tobacco and sexual health in secondary schools throughout West Lothian. Tobacco education is also delivered in all primary schools. Sessions are also available to community groups, youth clubs and uniformed organisations.

#### **Back on Track**

This service works with young people who are experiencing problems due to their own or a significant other's misuse of drugs or alcohol.

#### **Cloud Nine**

Assists and supports vulnerable young people up to 21 who want to reduce or stop smoking.

#### **Packit In**

This tobacco education and smoking cessation project works with young people, parents and staff who wish to address smoking issues in Inveralmond High School and Whitburn Academy and their feeder primaries.

#### **Healthy Respect**

Runs five drop-in sexual health clinics for young people in Deans and The James Young Community High Schools, Whitburn Academy, Boghall Health Clinic and Strathbrock Partnership. Access to contraception and pregnancy testing are available.

#### **Wise Up on Drugs**

Offers drug education to parents in their workplace.

All these services operate within Child Protection Guidelines.

For further information on the wide range of WLDAS services, contact Margot Ferguson, General Manager on 01506 430225 or 01506 446640.

### **West Lothian Women's Aid**

92 Ivanhoe Rise, Dedridge, Livingston EH54 6HZ

01506 413721

wlwomensaid@msn.com or cypwl@hotmail.co.uk

To provide refuge, support and advice for women and any accompanying children fleeing from domestic abuse.

There are two designated children's worker who supports children and young people one of which is involved in outreach through referral. This is tailored to the child's needs and can be one - one, group work, outings and follow-on support.

### **Service Structure**

West Lothian Women's Aid operates as a collective and as such does not have a hierarchical structure. We have only one office in West Lothian, two refuges and four cluster houses and the staffing is comprised of one finance worker, one administration worker two children's workers, one cluster house worker and three refuge workers.

## West Lothian Youth Action Project

33 Aller Place, Eliburn, Livingston, West Lothian,  
EH54 6RF 01506 461588 office@wlyap.org.uk

The project provides information, support and advice services to young people aged 10-21 throughout West Lothian. We particularly focus on young people that do not engage with other youth services. The project is a voluntary charitable organisation

### Services provided include:

- . A detached youth service
- . Early Intervention work (offending)
- . A befriending scheme
- . Youth Forum work
- . School work (challenging behaviour workshops, self esteem and confidence building etc)
- . Internet Café facilities
- . C. Card Service
- . Drug and Alcohol Peer Education Programme
- . Youth Consultation
- . Active Steps (activity programme for those at risk of offending)

### Service Structure

Project Director – Helen Davis

The Project Director manages a team of 27 +and volunteers. The organisation is steered by a management committee including representatives from Social Work (Youth Crime), Lothian and Borders Police, Community Education, Local Councillors, The Royal Bank of Scotland, Ecumenical Church and other independent members.

### Other Locations

#### **yacc.com - Internet Café located on the corner of**

Almondell Road and Strathbrock Place, Broxburn.

Open Monday 5.00-8.00pm

Wednesday 6.00 to 9.00pm

Friday 2.00pm until 5.00pm.

#### **Wee Croft, Bents/Stoneyburn**

Open Monday 6.00 to 9.00pm

Wednesday 6.00 to 9.00pm

Friday 2.00 to 5.00pm.

Detached youth work is carried out using a specially converted vehicle. This is located at specific venues throughout the region - for details of these please contact the project on 01506 461588.

### **Whitdale Family Centre**

Whitdale Early Years Centre  
55b Whitdalehead Road, Whitburn EH47 8JU  
01501 744380 Fax 01501 749220  
firstname.lastname@westlothian.gov.uk

Manager: Margo McCreight

Whitdale Family Centre offers a range of assessment and support services to families with young children, including playroom-based group care, outreach support within the family home and groupwork programmes for parents. Each family has a qualified Nursery Officer as key worker and an individualised care plan which is reviewed regularly.

The Family Centre is co-located with Whitdale Nursery School and Wraparound Care, together forming Whitdale Early Years Centre. The centre has its own health visitor available on-site part-week and receives visiting support from Community Health and other agencies providing a multi-agency approach. The centre also has a dedicated Special Care Nursery Officer for children who require additional support.

The centre serves the west side of West Lothian and referrals for a service should be made to the Early Years Services Group, administered by Sure Start.

#### **Structure**

The family centre service is part of Social Policy and is line managed by Rosemary Howe, Group Manager (Specialist Services)

### **Whitrigg House**

Main Street, East Whitburn, Livingston EH54  
01501 74 Fax 01506 777310  
firstname.lastname@westlothian.gov.uk

Manager: Wendy Milne

Whitrigg House provides residential care and support to four young people aged 16-17. Each young person has a key worker and staff work closely with Practice Team colleagues and partner agencies in providing an individualised care plan which is reviewed through the LAC review process.

Referrals for a placement should be made to the Resources Group which meets weekly.

#### **Structure**

The centre is part of Social Policy and is line managed by Jim Logue, Group Manager (Looked After Children)

### **Who Cares? Scotland**

1st Floor, Oswald Chambers, Glasgow G1 4QR  
0141 226 4441  
enquiries@whocaresscotland.org  
www.whocaresscotland.org

Who Cares? Scotland provides advocacy, support and information for young people in residential care, foster care and residential schools. We act as a voice for young people and campaign for change.

### **Service Structure**

Director - Deirdre Watson.  
Who Cares? Worker Ray MacLean 07787 560471  
Manager Janice Watson 07793 447251

### **Dundee sub-office**

11 Castle Street, Dundee DD1 3AA  
01382 202888 Fax: 01382 202889

### **Kilmarnock sub-office**

28-30 Grange Street, Kilmarnock KA1 2DD  
01563 573015 Fax: 01563 573122

### **Edinburgh sub-office**

c/o BAAF, 40 Shandwick Place, Edinburgh  
0131 226 7403 Fax: 0131 226 3778

### **Wraparound Care**

Education Services, Lindsay House, South Bridge Street,  
Bathgate, EH48 1TS  
01506 776127  
chis@westlothian.gov.uk  
www.scottishchildcare.gov.uk

To provide childcare alongside pre-school education, for three and four year olds, and for children in Primary 1-3, where space permits. Wraparound care is available in eleven locations.

Further information is available from Irene McInnes at the Childcare Information Service on 01506 776660 or at the above website.

### **Service Structure**

The service is managed by the Head Teachers of the schools concerned, with an Education Officer based in Lindsay House being responsible for policy development.

### **Youth Justice Family Support Team**

2a Shiel House, Shiel Walk, Livingston EH54 5EH  
01506 774085  
firstname.lastname@westlothian.gov.uk  
Manager: Kevin Carter

The Youth Justice Family Support Team offers an integrated flexible service to Young People and their families to reduce Youth Offending across West Lothian. The team works closely with its partners particularly the Reporter to the Children's Hearing, Police, Education and the voluntary sector to divert Young People from the Children's Hearing System. We seek to identify at an early stage young people whose behaviour is causing concern as well as working with persistent offenders and young people 16 to 18 years who are in the Criminal Justice System.

### **Service Structure**

The service is part of Social Policy and is line managed by Jim Logue, Group Manager (Looked After Children)

### **YWCA Livingston**

31 Canberra Street, Craigshill, Livingston EH54 5HA  
01506 432911  
Fax: 01506 439708  
livingstonywca@care4free.net

YWCA Livingston aims to enable women, particularly those under 30, to develop their full potential and participate at all levels of society. It does this by providing education, information and advice to girls and women in the Livingston area.

We offer:

- Drop-in service
- Information and advice on issues such as housing, health,
- Educational opportunities and career development
- Summer playscheme for children aged 5 - 12 years
- Young mothers group
- Young women's group for 16 - 19 year olds
- Girls clubs
- Volunteering opportunities