

Early Years Life Stage Outcomes (EY)

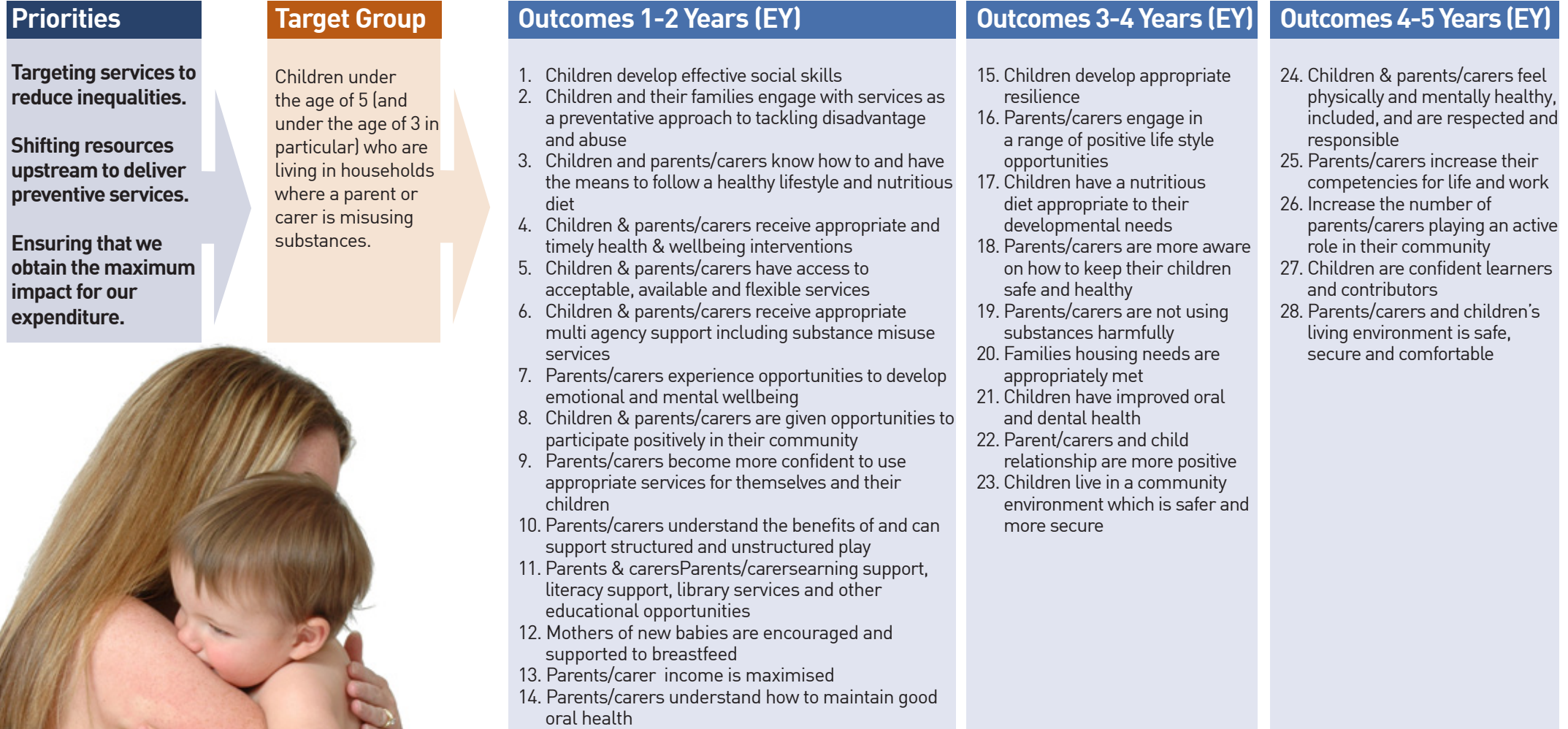
LONG TERM OUTCOME:

Children are ready to start nursery and school. Parents and carers are responsive to their children's developmental needs.

Background & Context

The principles of effective parenting and early interventions that are appropriate, timely and proportionate are fundamental to this Life Stage.

POLICY FRAMEWORKS - • Getting it Right for Every Child (GIRFEC) • Early Years Framework • Health for All Children (HALL4) • NHS Performance Targets (HEAT)



School Age Life Stage Outcomes (SA)

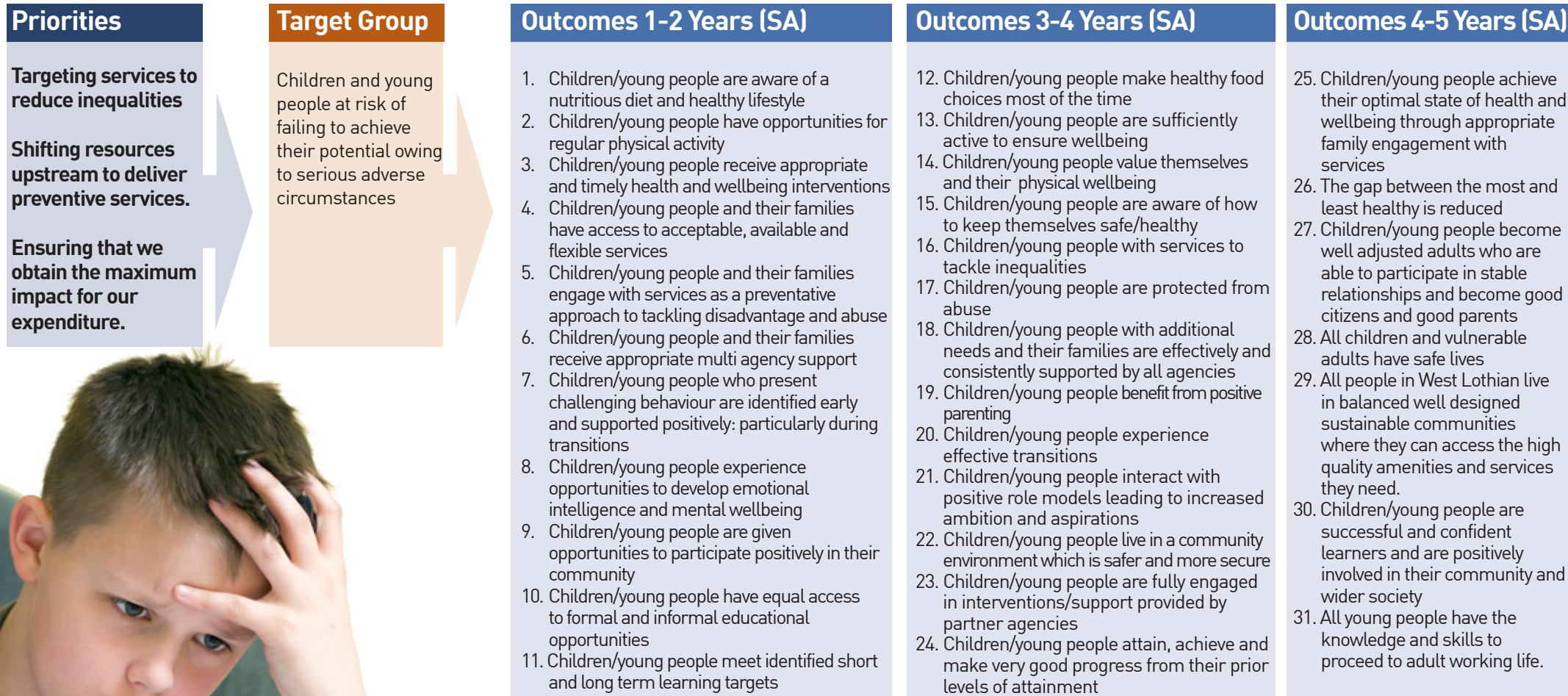
LONG TERM OUTCOME:

Everyone's life chances are maximised by improving their educational attainment to become successful learners, confident individuals, and responsible citizens and effective contributors

Background & Context

Demographic predictions tell us that the number of children living in West Lothian will continue to grow. We need to plan well to ensure that services are appropriate and effective.

POLICY FRAMEWORKS - • Getting it Right for Every Child (GIRFEC) • The Early Years Framework • Health for All Children (HALL4) • Child at the Centre • Curriculum for Excellence • NHS Performance Targets (HEAT)



Young People in Transition Life Stage Outcomes (YP)

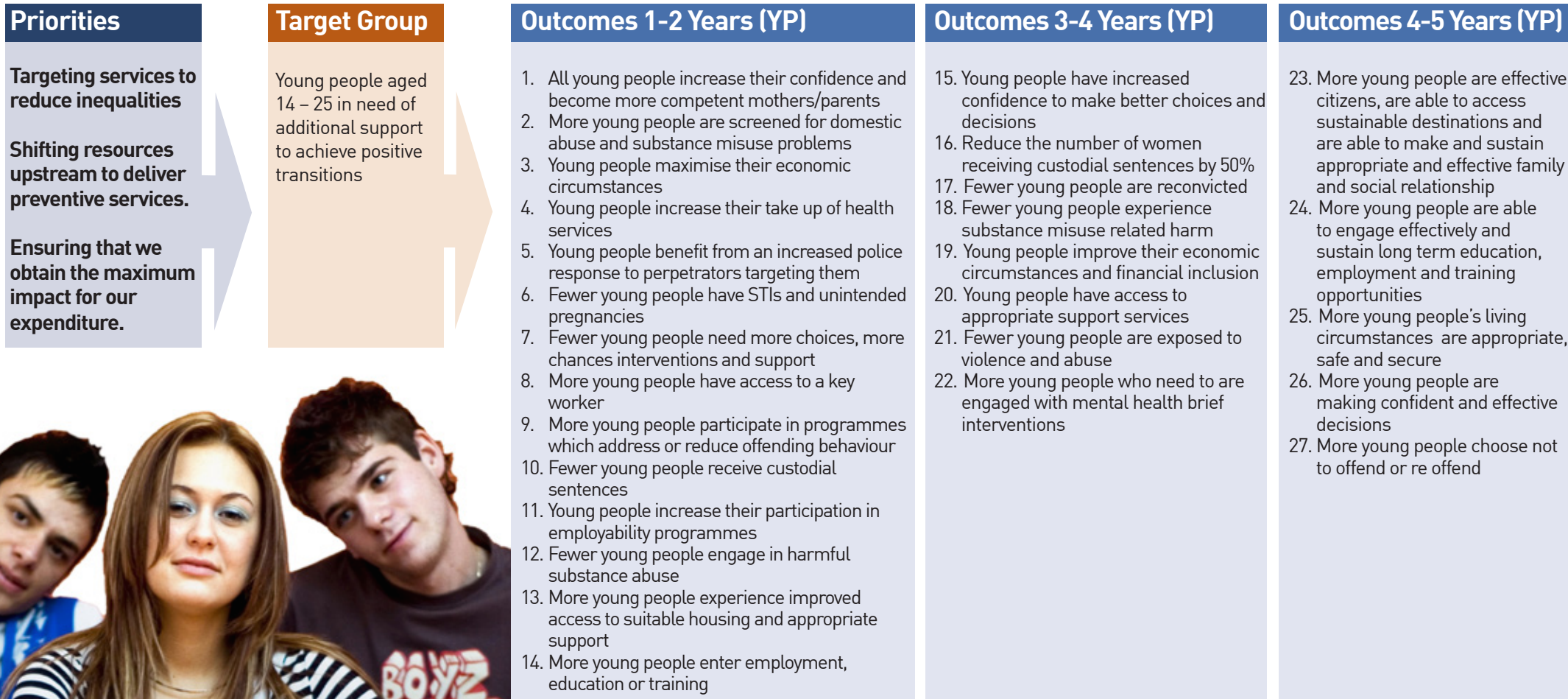
LONG TERM OUTCOME:

Our young people are successful learners, confident individuals, effective citizens and have a positive sustainable destination.

Background & Context

In the best of circumstances, making the transition from childhood to adulthood is a challenging task in our society. The current economic climate will add to this challenge. Youth unemployment has increased and in West Lothian the rate of increase is greater than for Scotland. Young people without adequate support will flounder, sometimes with lifelong consequences. We have prioritised three particular groups: young mothers 14 to 20 years old, 14- to 19-year olds who have disengaged with school and other systems and have no positive destination in work or education; and 20 to 25 year olds caught up in the criminal justice system.

POLICY FRAMEWORKS - • More Choices, More Chances • NHS Performance Targets (HEAT) • Violence Against Women Strategy



Adults of Working Age Life Stage Outcomes (A)

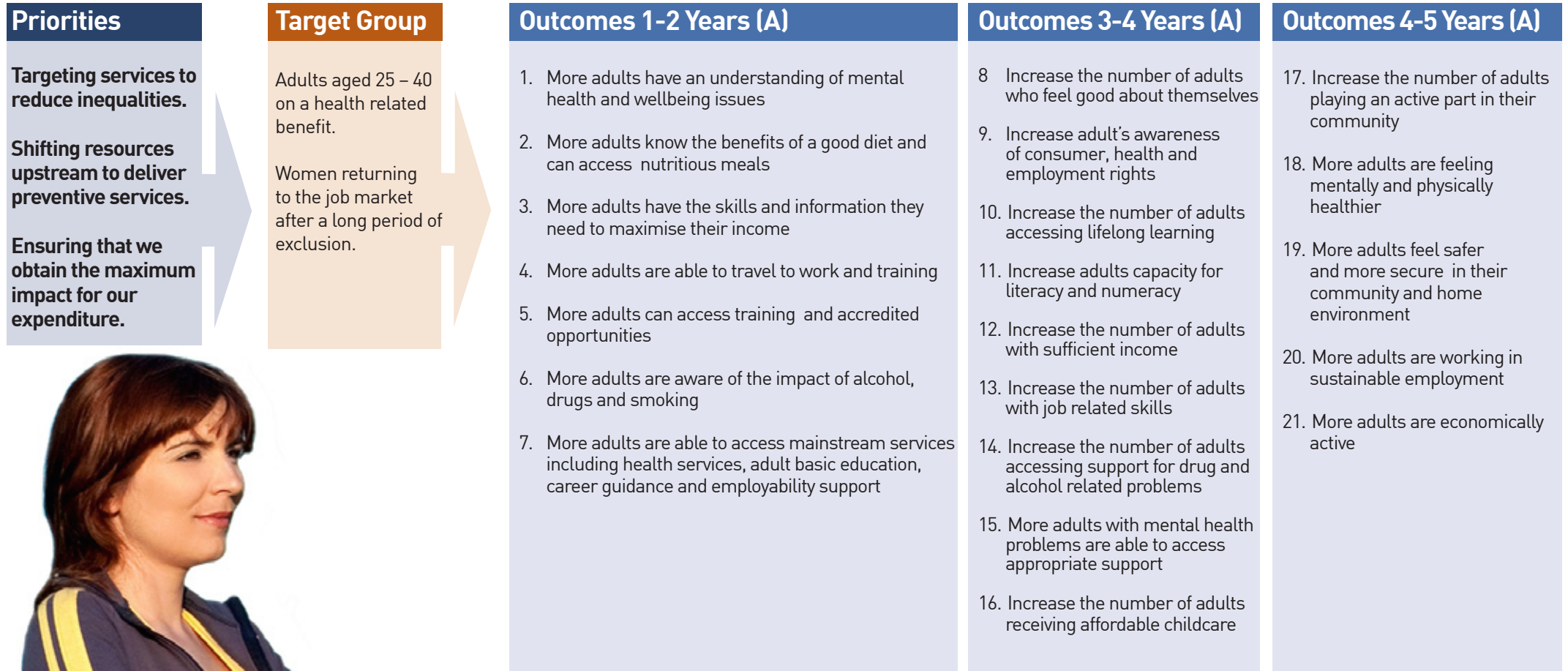
LONG TERM OUTCOME:

Every adult has the confidence, skills and ability to secure and sustain employment.

Background & Context

Areas within West Lothian continue to display high levels of economic inactivity. Poor health, low educational attainment and high levels of unemployment are characteristics displayed by adults of working age living within challenging areas of West Lothian. Changes to benefit legislative in the UK has meant that for the first time numerous women previously engaged in full time childcare are now to return to the labour market. This will bring a number of challenges both for the individual who often has little work experience and the West Lothian economy in terms of supporting women returner to the labour market.

POLICY FRAMEWORKS - • Workforce Plus • Towards a Mentally Flourishing Scotland • Scottish Skills Strategy • West Lothian Economic Strategy • NHS Performance Targets (HEAT)



Older People Life Stage Outcomes (OP)

LONG TERM OUTCOME:

Older people live longer, healthier, more independent and fulfilling lives within a safe & supportive community and continue to learn and develop.

Background & Context

The population of West Lothian is projected to grow rapidly over coming years and the number of older people within that is expected to grow faster than any other group. We must plan to address the needs of an ageing population.

POLICY FRAMEWORKS - • The Older People's Service Statement • NHS Performance Targets (HEAT) • The National Dementia Strategy • All our Futures – planning for Scotland within an ageing population

